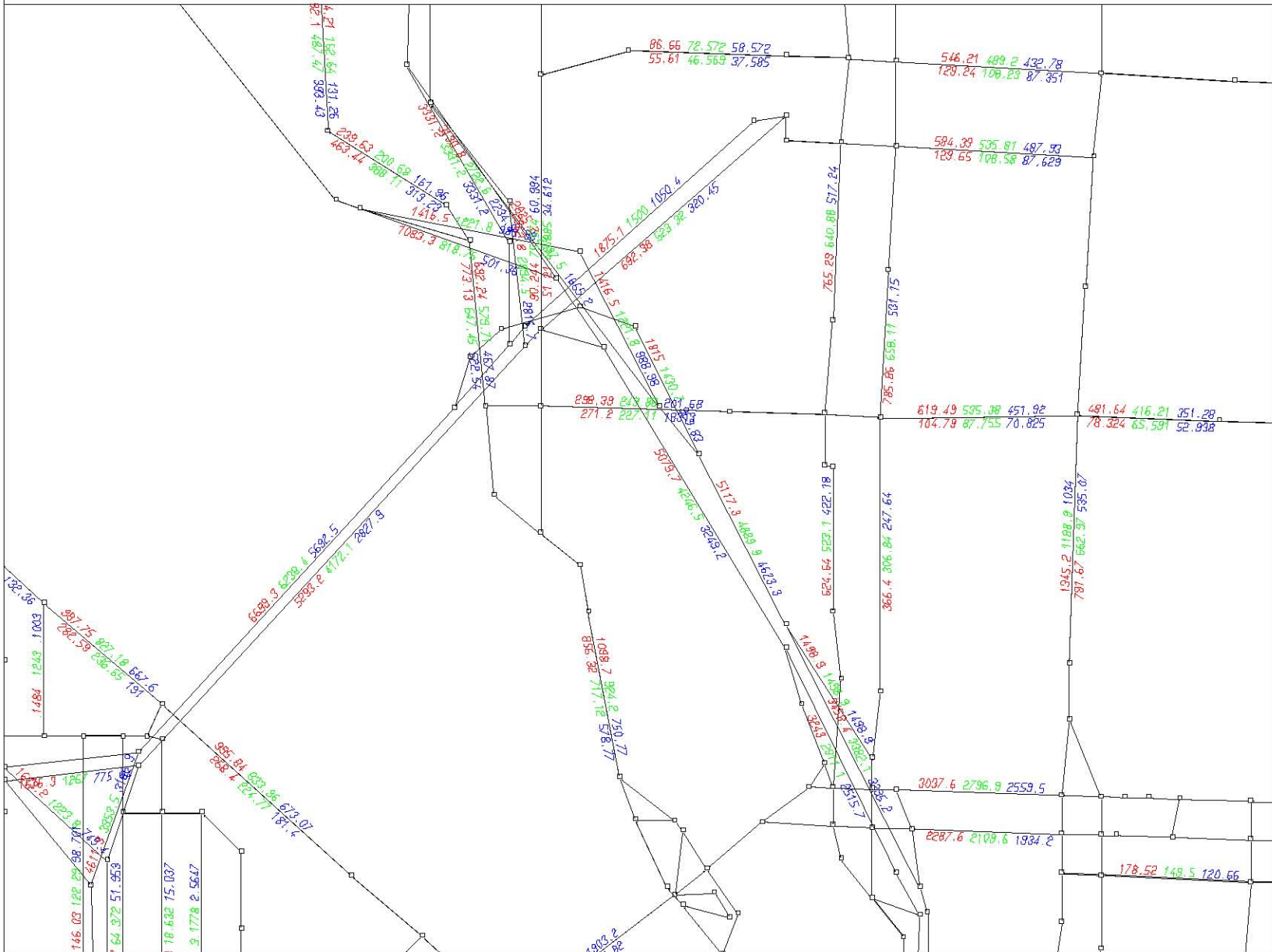


emme/2



LINKS:
!i=1,1260
&!j=1,1260
&!type=8,898,1
THRESHOLD:
LOWER: .01
UPPER: -.01

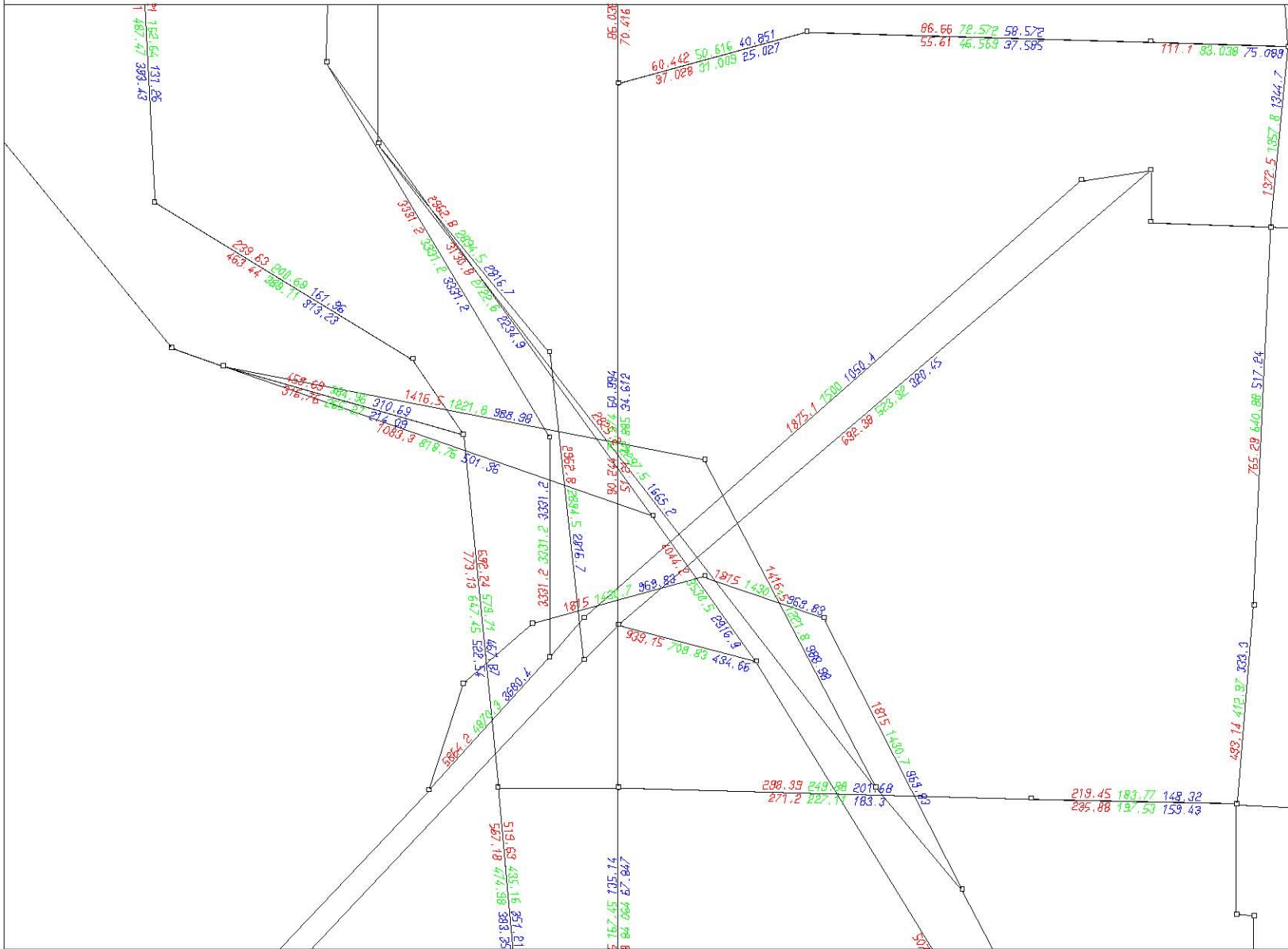
LAYERS:
@hr3vl
@hr2vl
@hr1vl

WINDOW:
1447.2/130.214
1448.8/131.421

EMME/2 PROJECT: I-5 Trade Corridor Phase II Modeling
SCENARIO 1280: copy of scl272 for calculation of AM evaluation measures

01-10-01 22:23
MODULE: 2.13
DKS2000....rjs

emme/2



LINKS:
!i=1,1260
&!j=1,1260
&!type=8,898,1
THRESHOLD:
LOWER: .01
UPPER: -.01

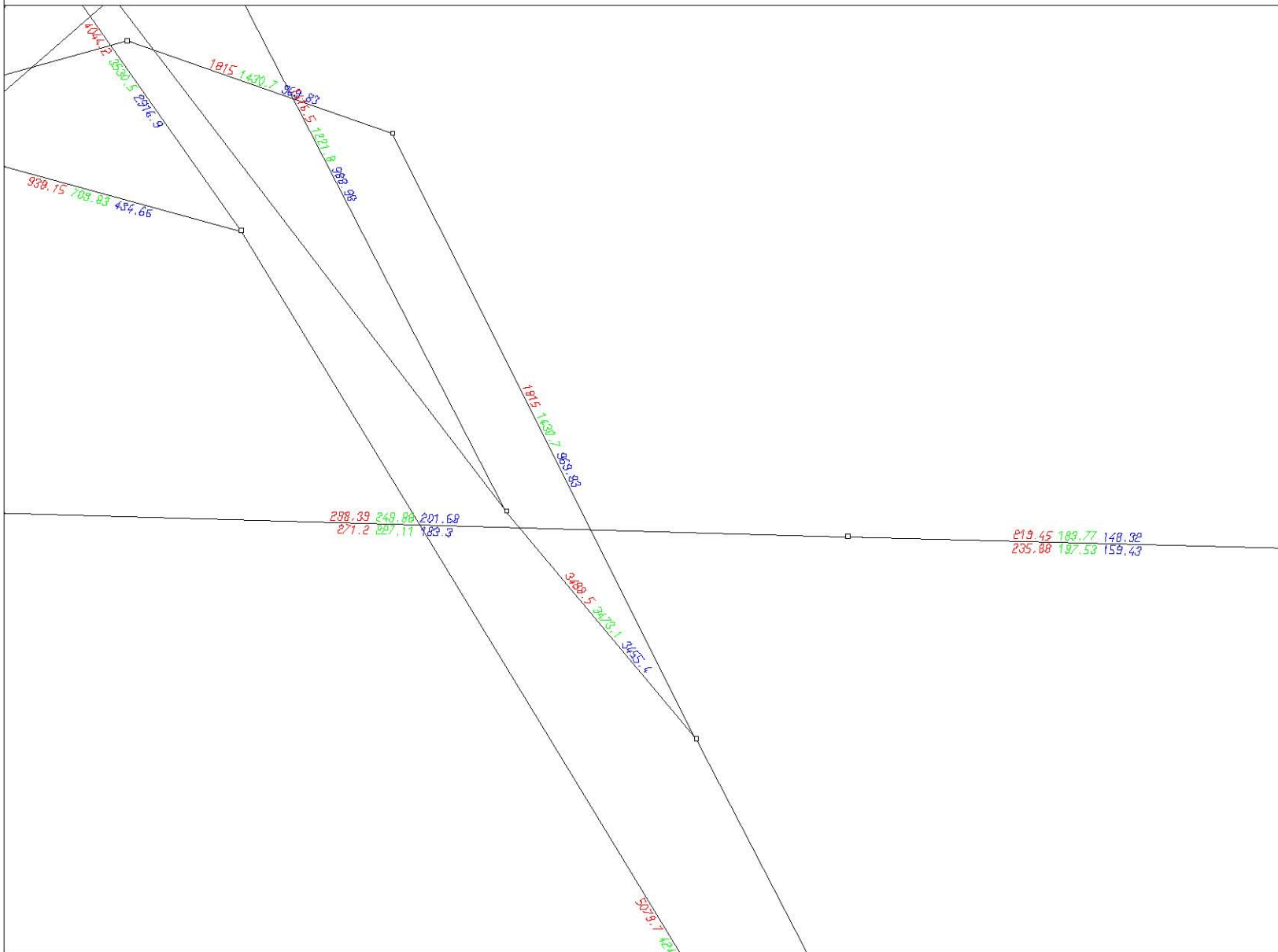
LAYERS:
@hr3vl
@hr2vl
@hr1vl

WINDOW:
1447.5/130.813
1448.2/131.378

EMME/2 PROJECT: I-5 Trade Corridor Phase II Modeling
SCENARIO 1280: copy of sc1272 for calculation of AM evaluation measures

01-10-01 22:36
MODULE: 2.13
DKS2000....rjs

emme/2



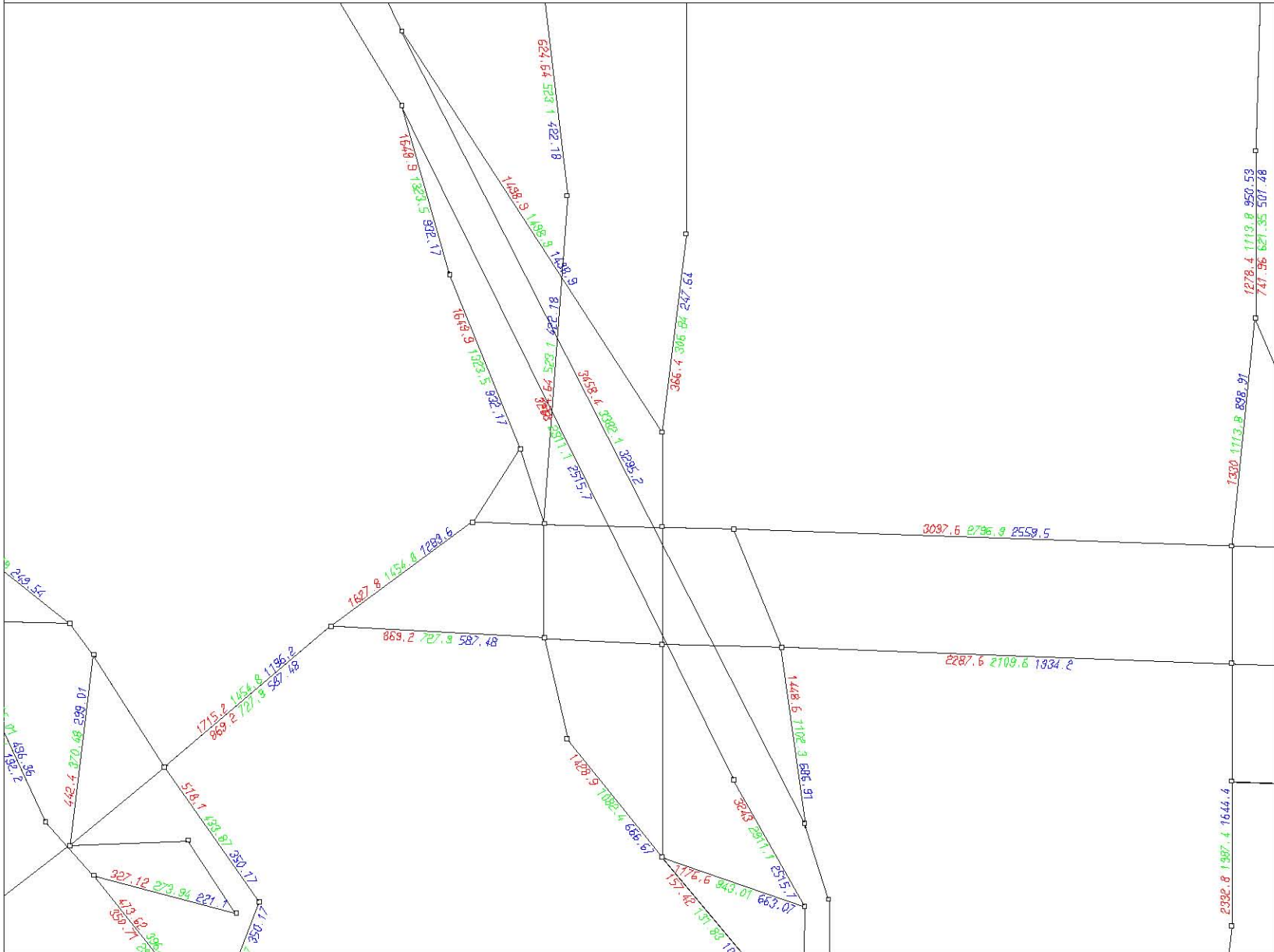
LINKS:
!i=1,1260
&!j=1,1260
&!type=8,898,1

THRESHOLD:
LOWER: .01
UPPER: -.01

LAYERS:
@hr3vl
@hr2vl
@hr1vl

WINDOW:
1447.9/130.791
1448.2/131.045

emme/2



LINKS:
!i=1,1260
&!j=1,1260
&!type=8,898,1

THRESHOLD:
LOWER: .01
UPPER: -.01

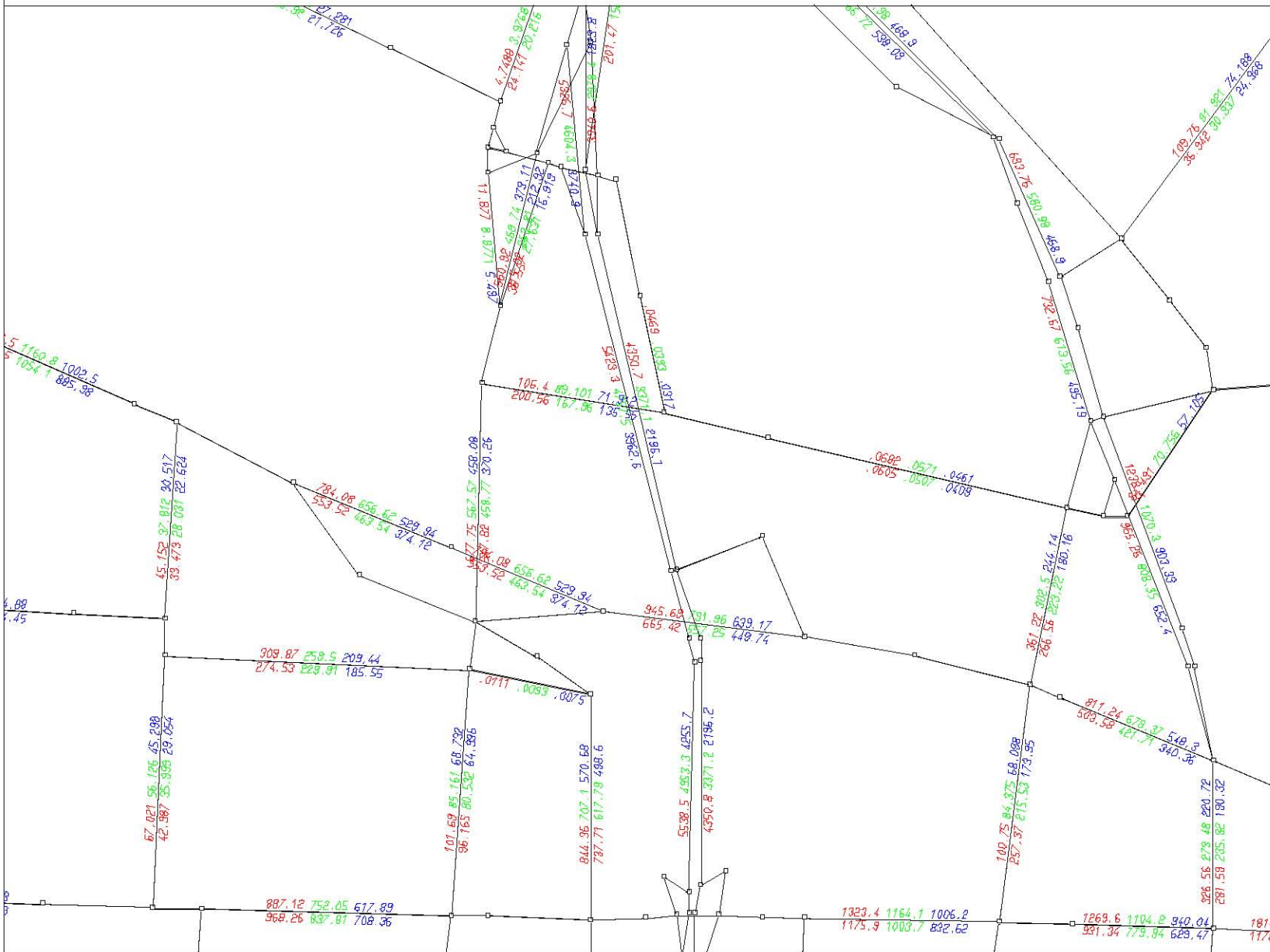
LAYERS:
@hr3vl
@hr2vl
@hr1vl

WINDOW:
1448/130.242
1448.5/130.645

EMME/2 PROJECT: I-5 Trade Corridor Phase II Modeling
SCENARIO 1280: copy of scl272 for calculation of AM evaluation measures

01-10-01 22:38
MODULE: 2.13
DKS2000....rjs

emme/2



LINKS:
!i=1,1260
&!j=1,1260
&!type=8,898,1
THRESHOLD:
LOWER: .01
UPPER: -.01

LAYERS:
@hr3vl
@hr2vl
@hr1vl

WINDOW:
1446.6/133.289
1448.7/ 134.85

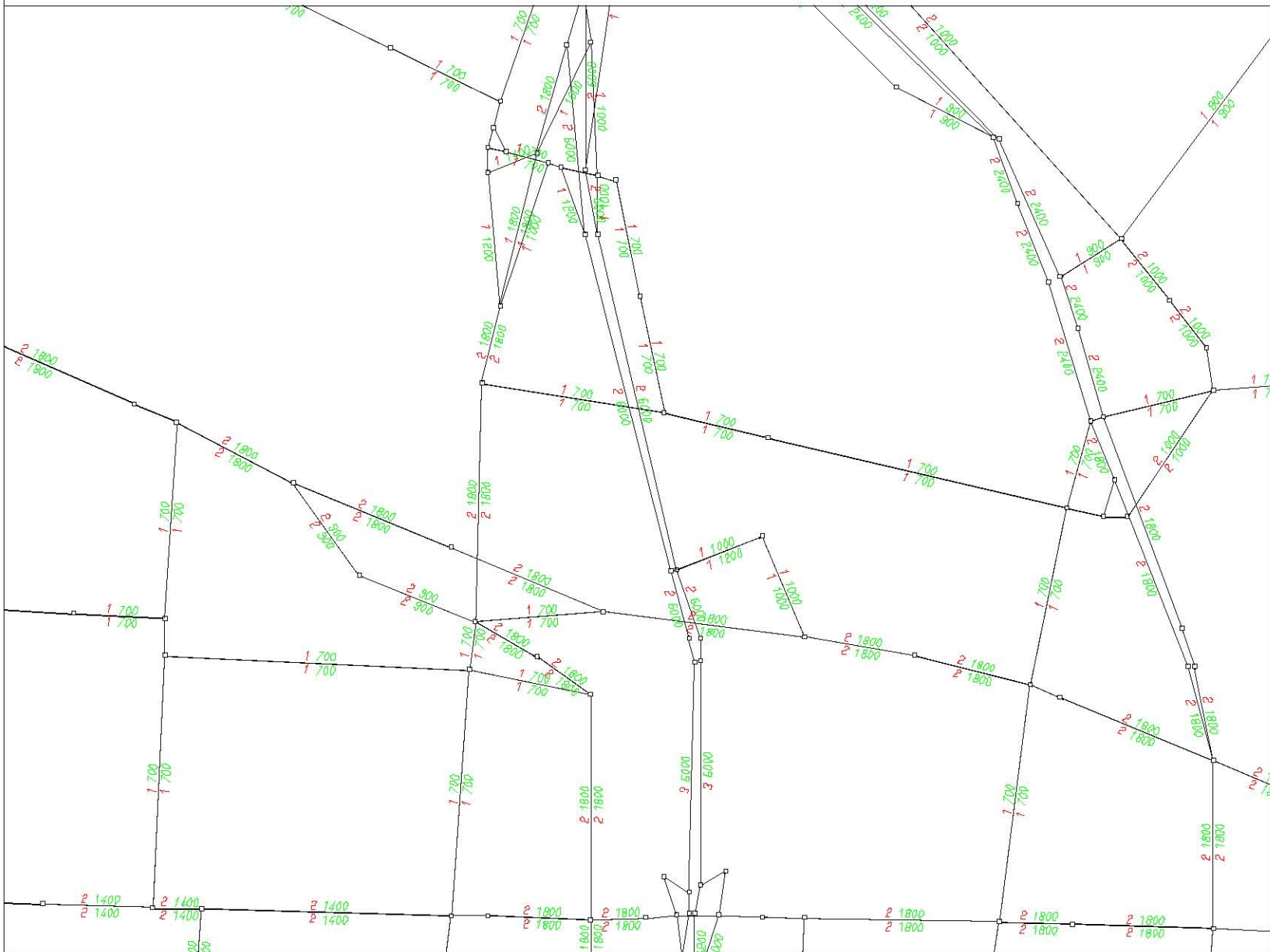
EMME/2 PROJECT: I-5 Trade Corridor Phase II Modeling
SCENARIO 1280: copy of scl272 for calculation of AM evaluation measures

01-10-01 22:13
MODULE: r.13
DKS2000....rjs

emme/2

LINKS:
!i=1,1260
&!j=1,1260
&!type=8,898,1
THRESHOLD:
LOWER: .01
UPPER: -.01

LAYERS:
ul3
@lanes



WINDOW:
1446.6/133.289
1448.7/ 134.85

EMME/2 PROJECT: I-5 Trade Corridor Phase II Modeling
SCENARIO 1280: copy of scl272 for calculation of AM evaluation measures

01-10-01 22:17
MODULE: 2.13
DKS2000....rjs

emme/2



LINKS:
!i=1,1260
&!j=1,1260
&!type=8,898,1

THRESHOLD:
LOWER: .01
UPPER: -.01

LAYERS:
ul3
@lanes

WINDOW:
1447.2/130.214
1448.8/131.421

EMME/2 PROJECT: I-5 Trade Corridor Phase II Modeling
SCENARIO 1280: copy of scl272 for calculation of AM evaluation measures

01-10-01 22:20
MODULE: 2.13
DKS2000....rjs