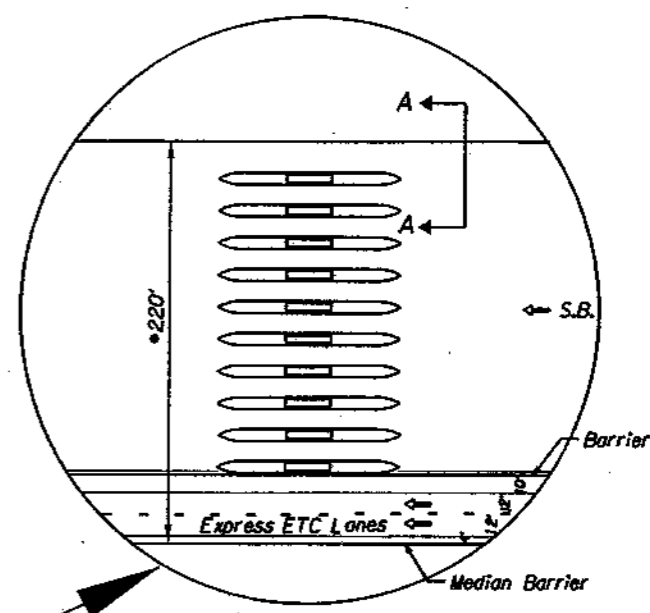
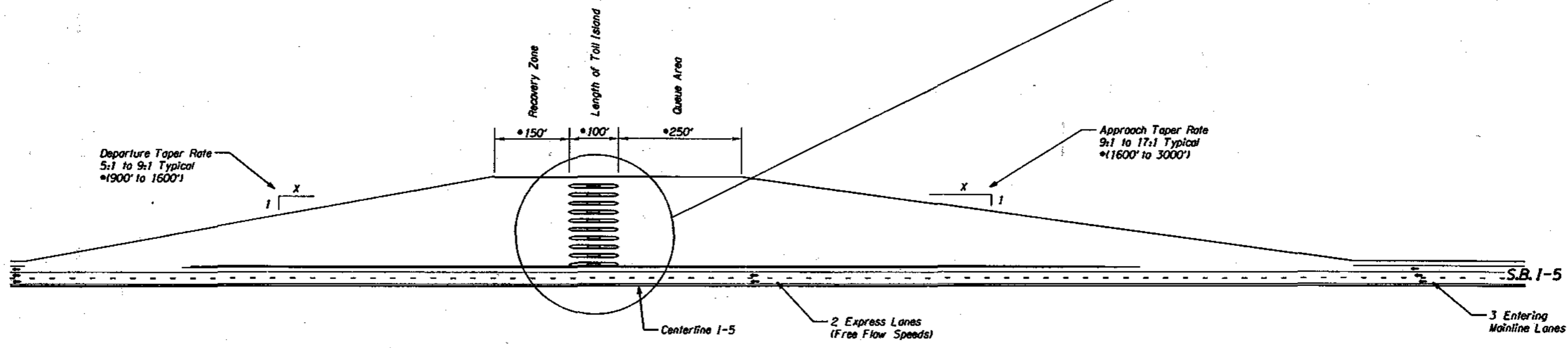


Section A-A  
Typical Tollbooth  
Lane Widths and Elevations  
Not to Scale



Typical Tollbooth Barrier

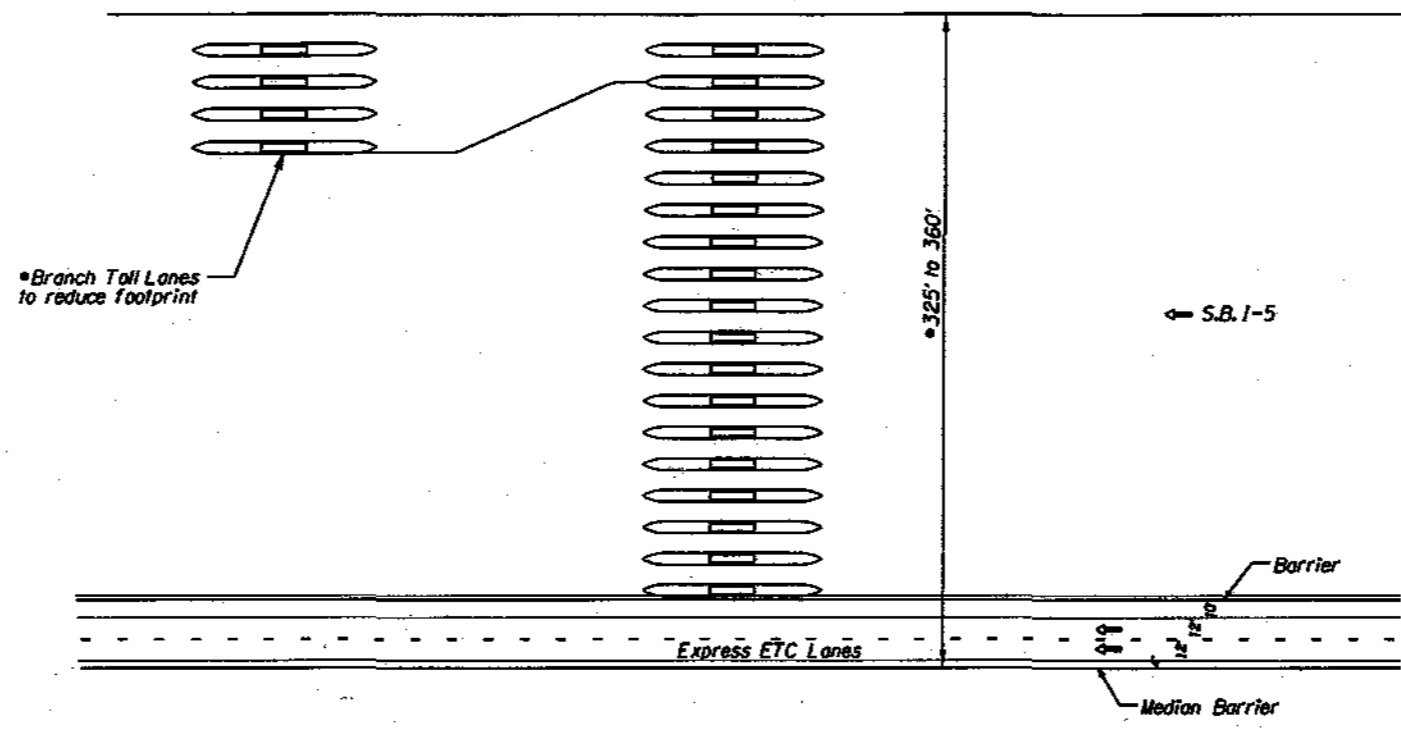


• Dimensions shown are typical ranges shown for 3 mainline entry lanes

Not to Scale

|  |  |
|--|--|
| DAVID EVANS AND ASSOCIATES INC.  |  |
| I-5: COLUMBIA RIVER CROSSING<br>TYPICAL MAINLINE TOLL PLAZA LAYOUT<br>3 - ENTERING LANES |  |
| Reviewed By -<br>Designed By - ROA<br>Drafted By - MPLA                                  |  |
| SHEET NO.<br>1 OF 2  |  |

Figure 2



|  |   |  |
|--|---|--|
|  | DAVID EVANS AND ASSOCIATES INC.   |  |
|  | <b>I-5: COLUMBIA RIVER CROSSING<br/>         TYPICAL MAINLINE TOLL PLAZA LAYOUT<br/>         5 - ENTERING LANES</b> |  |
|  | Reviewed By -<br>Designed By - ROA<br>Drafted By - MPLA   |  |
|  | SHEET<br>NO.<br><b>2 OF 2</b>   |  |

Figure 3

Vancouver

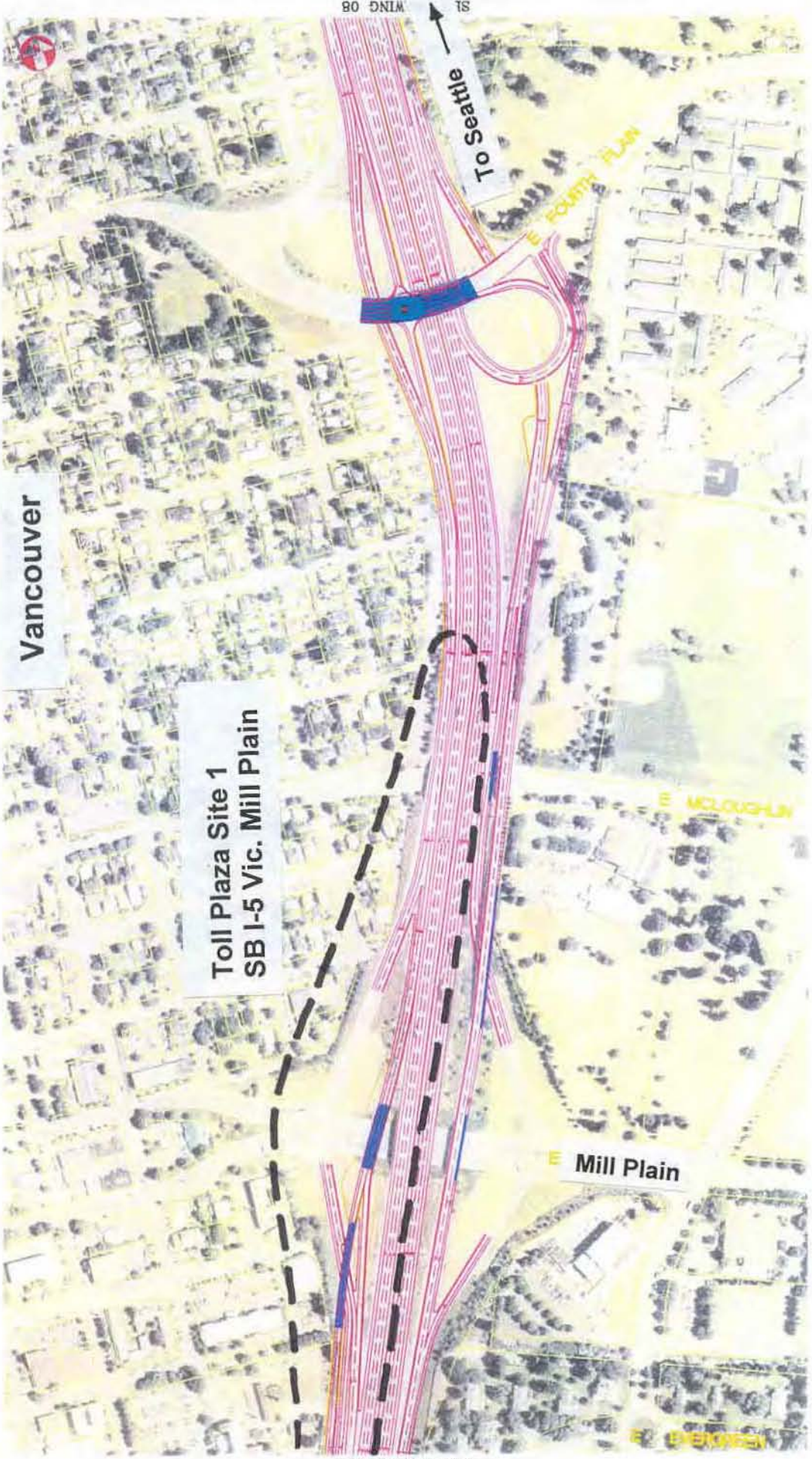
Toll Plaza Site 1  
SB I-5 Vic. Mill Plain

To Seattle  
90 DNIM  
1S

E FOURTH PLAN

Mill Plain

SEE DRAWING 06



MARCH 2005  
SHEET  
7  
OF 14

# I-5 TRANSPORTATION AND TRADE PARTNERSHIP

## CONCEPT 4 - DOUBLE-STRUCTURE

SCALE 1" = 300'

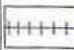
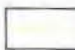





**LEGEND**

|  |              |  |                      |  |                     |  |                |  |                 |
|--|--------------|--|----------------------|--|---------------------|--|----------------|--|-----------------|
|  | RIGHT OF WAY |  | ROADWAY CONSTRUCTION |  | BRIDGE CONSTRUCTION |  | RETAINING WALL |  | CUT/FILL LIMITS |
|--|--------------|--|----------------------|--|---------------------|--|----------------|--|-----------------|

Figure 4

Figure 5



|   |  |  |   |  |   |   |   |
|---|--|--|---|--|---|---|---|
| <b>LEGEND</b>   |  |  |   |  | <b>SCALE 1" = 300'</b>  | <b>I-5 TRANSPORTATION<br/>AND TRADE PARTNERSHIP</b><br><br><b>CONCEPT 4 - DOUBLE-DECK STRUCTURE</b> | MARCH 2002  |
|  LIGHT RAIL |  RIGHT OF WAY |  ROADWAY CONSTRUCTION |  BRIDGE CONSTRUCTION |  RETAINING WALL |  CUT/FILL LIMITS |   |  |

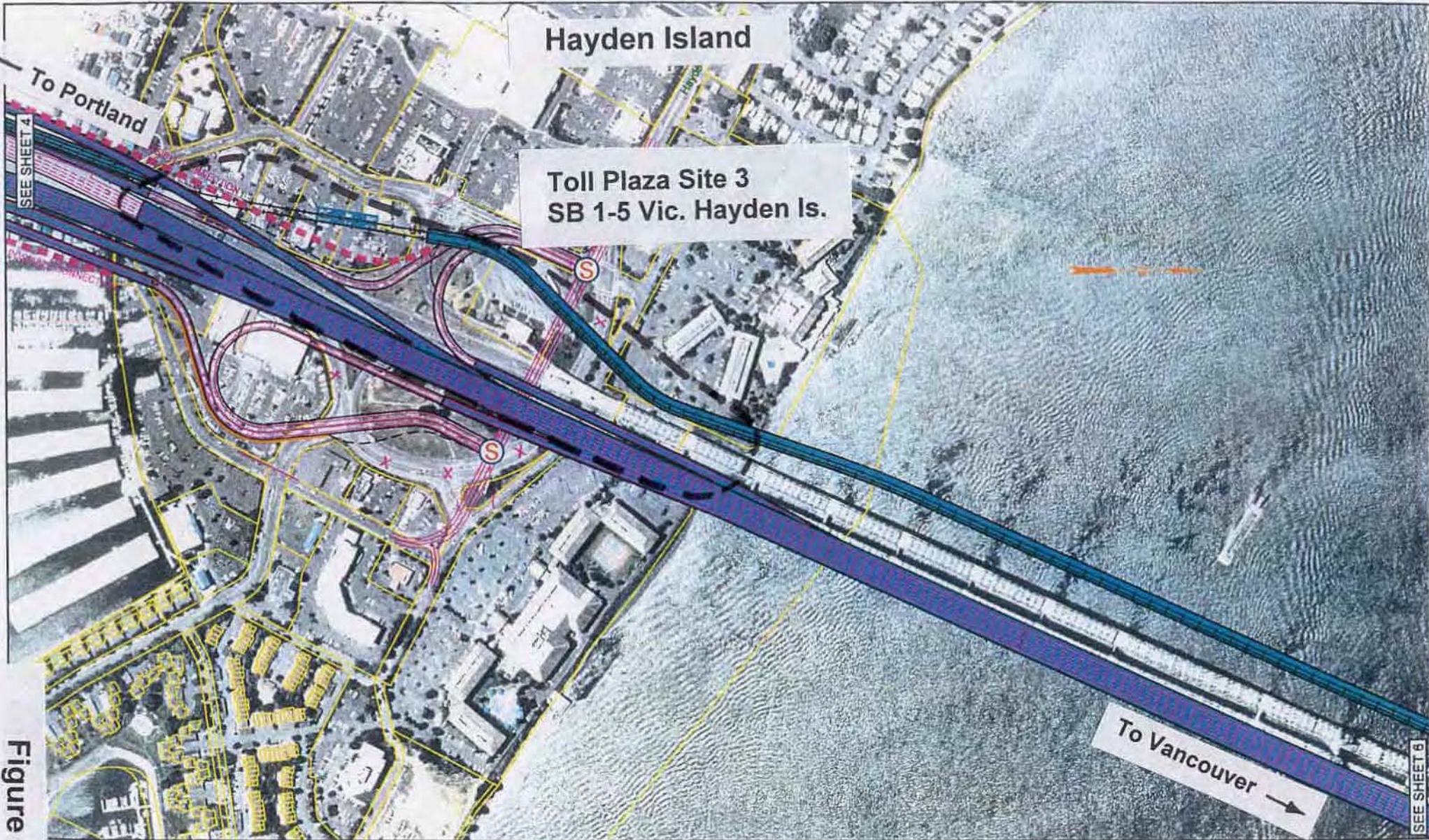


Figure 6

LEGEND

SCALE 1" = 300'



I-5 TRANSPORTATION AND TRADE PARTNERSHIP

CONCEPT 4 - DOUBLE-DECK STRUCTURE

MARCH 2002

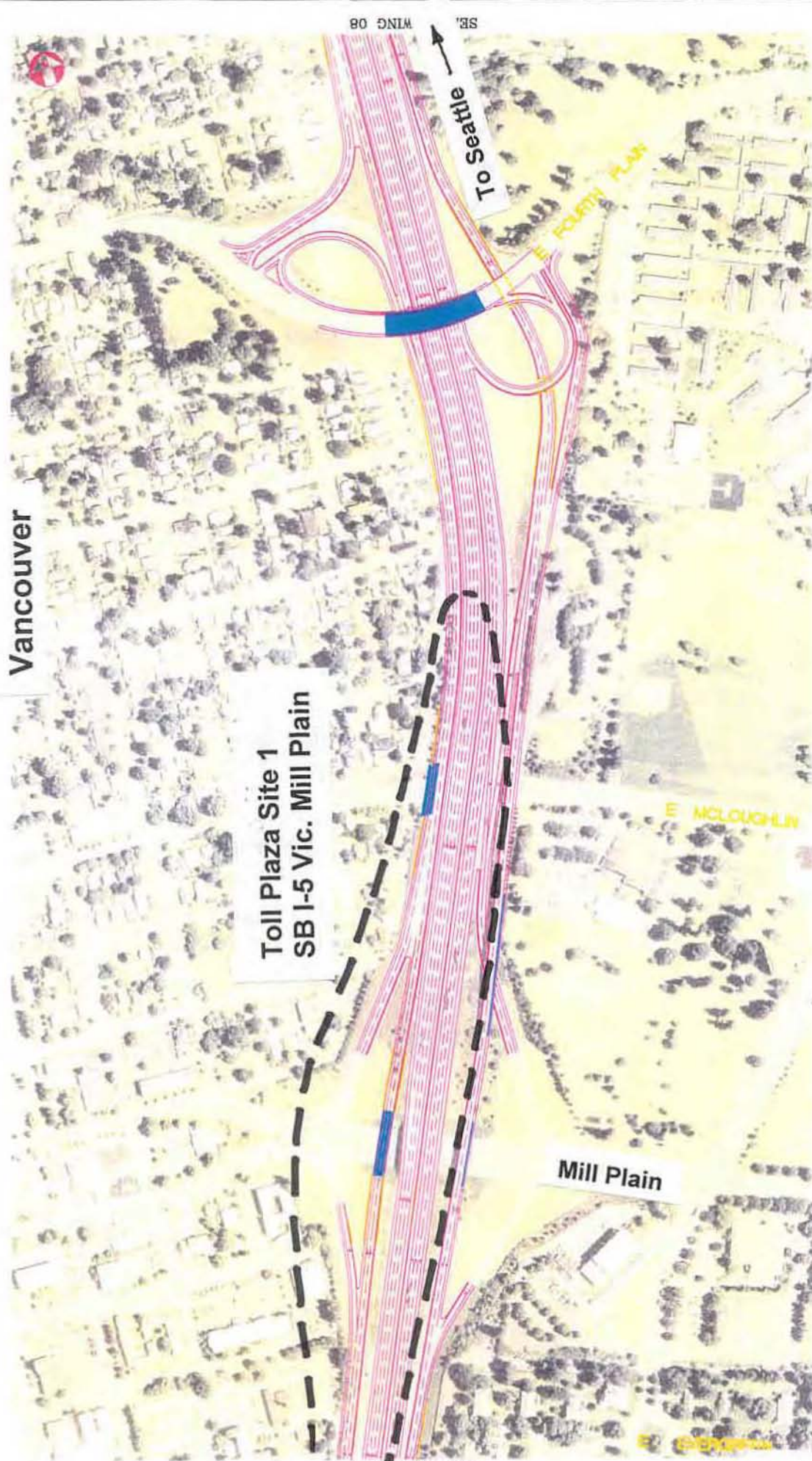
SHEET

5

OF 10

-  LIGHT RAIL
-  RIGHT OF WAY
-  ROADWAY CONSTRUCTION
-  BRIDGE CONSTRUCTION
-  RETAINING WALL
-  CUT/FILL LIMITS

Vancouver



SEE DRAWING 06

SEE DRAWING 06

**I-5 TRANSPORTATION  
 AND TRADE PARTNERSHIP**  
 CONCEPT 7-3 LANE W/ ARTERIAL STR

SCALE 1" = 300'

**LEGEND**

|  |                      |
|--|----------------------|
|  | ROADWAY CONSTRUCTION |
|  | BRIDGE CONSTRUCTION  |
|  | RETAINING WALL       |
|  | CUT/FILL LIMITS      |

|  |              |
|--|--------------|
|  | RIGHT OF WAY |
|--|--------------|

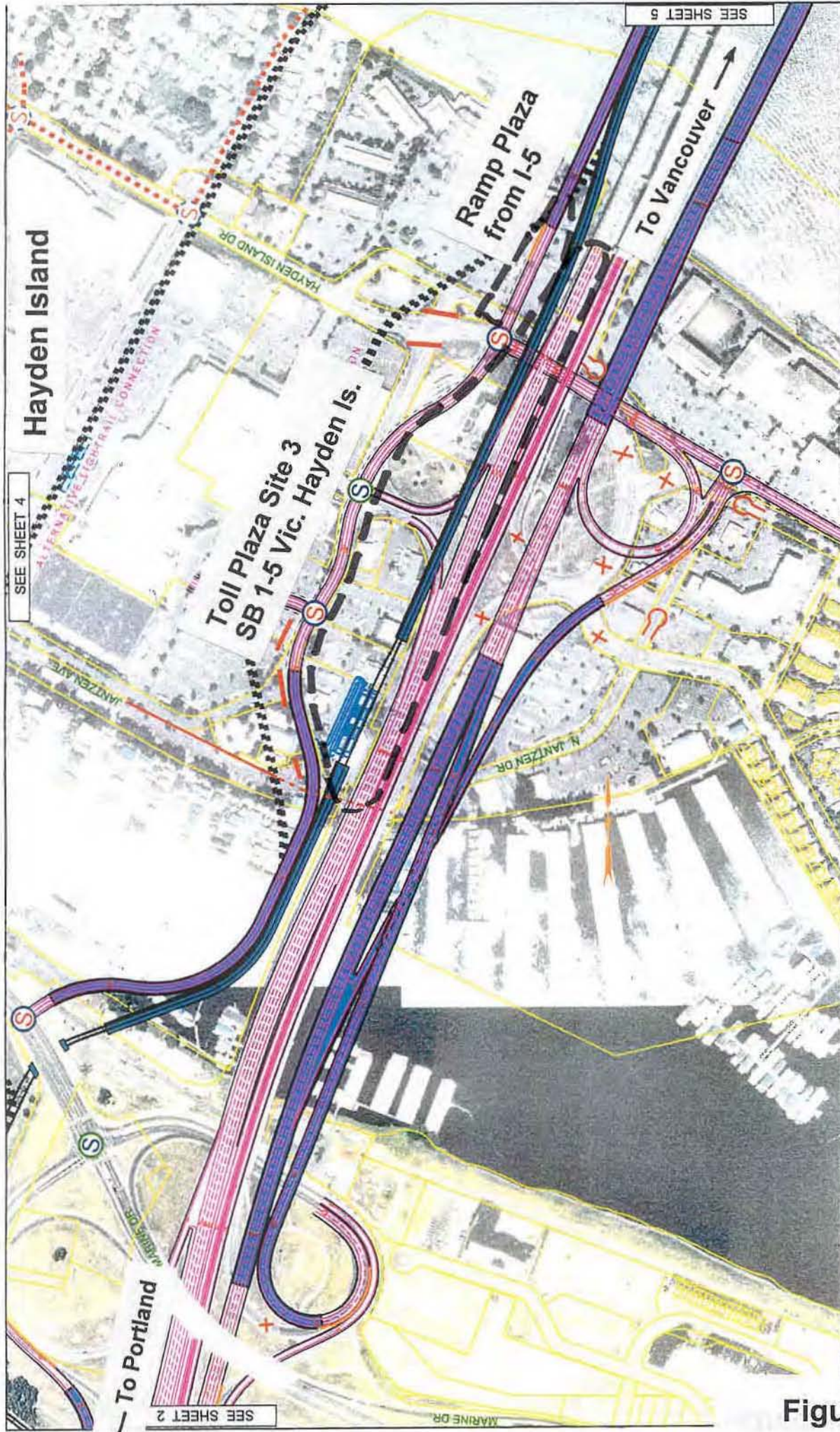
Figure 7



Figure 8

|               |              |                      |                     |                |                        |   |                 |
|---------------|--------------|----------------------|---------------------|----------------|------------------------|---|-----------------|
| <b>LEGEND</b> |              |                      |                     |                | <b>SCALE 1" = 300'</b> | <b>I-5 TRANSPORTATION AND TRADE PARTNERSHIP</b> | MARCH 2002      |
| LIGHT RAIL    | RIGHT OF WAY | ROADWAY CONSTRUCTION | BRIDGE CONSTRUCTION | RETAINING WALL |                        |   | CUT/FILL LIMITS |





Hayden Island

Toll Plaza Site 3  
SB 1-5 Vic. Hayden Is.

Ramp Plaza  
from I-5

To Vancouver →

← To Portland

SEE SHEET 4

SEE SHEET 2

SEE SHEET 5

MARCH 2002

SHEET **3** OF 10

**I-5 TRANSPORTATION AND TRADE PARTNERSHIP**

CONCEPT 7 - 3 LANE STRUCTURE WITH ARTERIAL

SCALE 1" = 300'

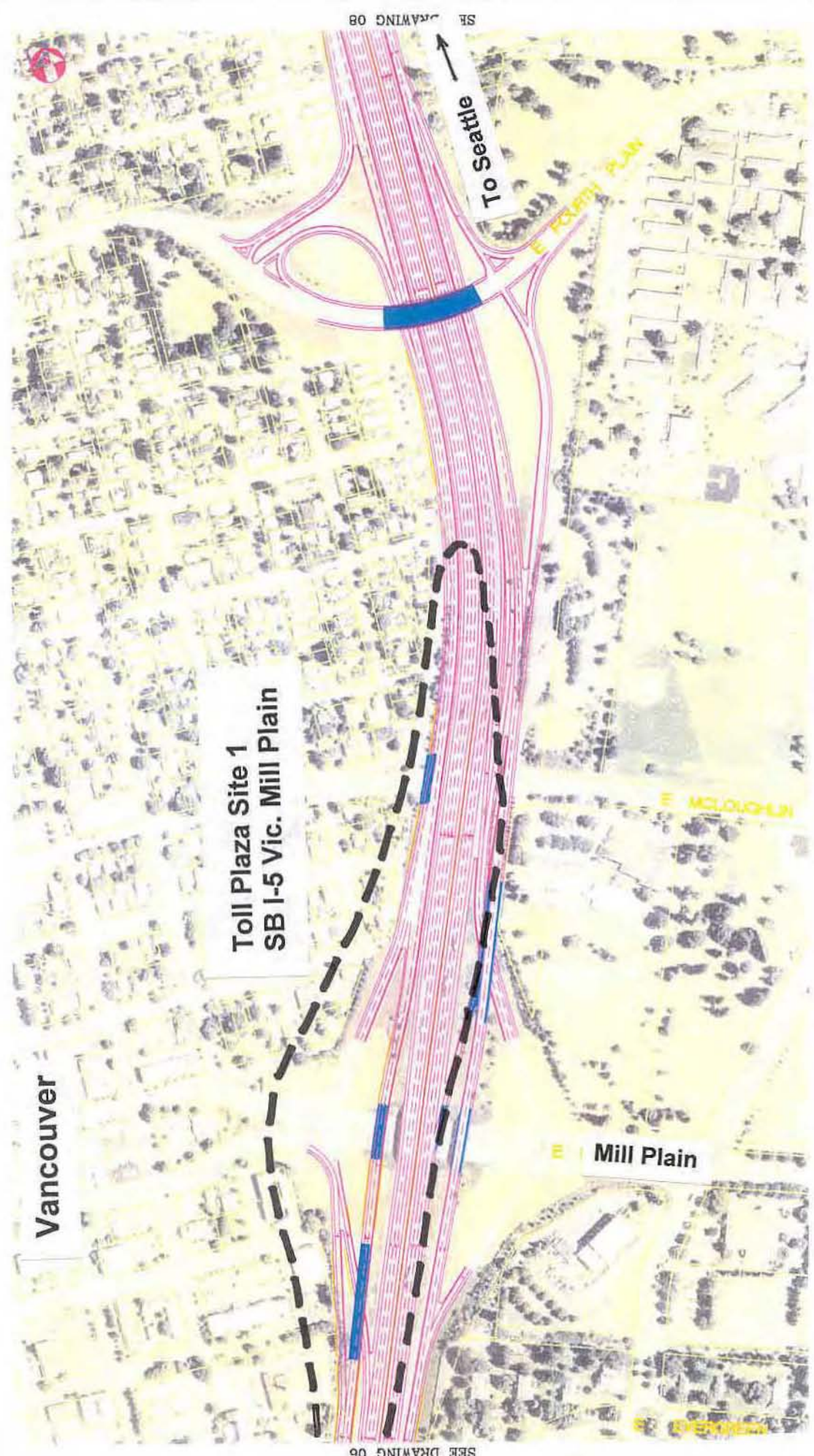
Portland/Vancouver I-5 Transportation Partnership

**LEGEND**

- LIGHT RAIL
- RIGHT OF WAY
- ROADWAY CONSTRUCTION
- BRIDGE CONSTRUCTION
- RETAINING WALL
- CUT/FILL LIMITS

Figure 9





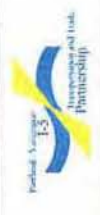
SEE DRAWING 06

SEE DRAWING 08

MARCH 2002  
SHEET  
**7**  
OF 7

**I-5 TRANSPORTATION AND TRADE PARTNERSHIP**  
**CONCEPT 1 - 5 LANE STRUCTURE**

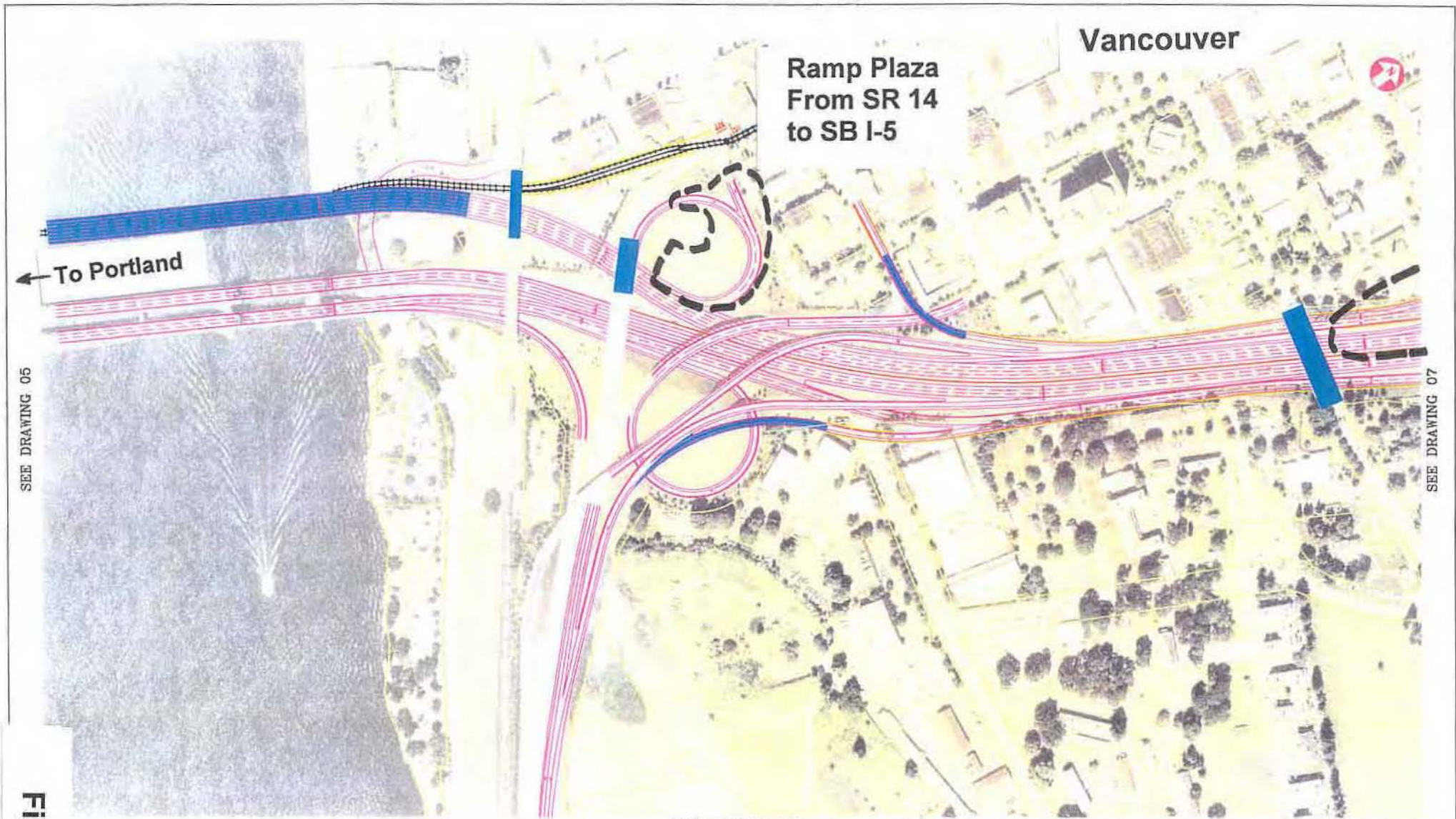
SCALE 1" = 300'



**LEGEND**

-  ROADWAY CONSTRUCTION
-  BRIDGE CONSTRUCTION
-  RETAINING WALL
-  CUT/FILL LIMITS
-  RIGHT OF WAY

**Figure 10**



SEE DRAWING 06

SEE DRAWING 07

SEE DRAWING 06A

Figure 11

|               |              |                      |                     |                |                        |   |                                     |
|---------------|--------------|----------------------|---------------------|----------------|------------------------|---|-------------------------------------|
| <b>LEGEND</b> |              |                      |                     |                | <b>SCALE 1" = 300'</b> | <b>I-5 TRANSPORTATION AND TRADE PARTNERSHIP</b> | MARCH 2007                          |
| LIGHT RAIL    | RIGHT OF WAY | ROADWAY CONSTRUCTION | BRIDGE CONSTRUCTION | RETAINING WALL |                        |   | CUT/FILL LIMITS                     |
|               |              |                      |                     |                |                        |   | <b>CONCEPT 1 - 5-LANE STRUCTURE</b> |



**I-205 Washington**

**SR 14**

**To Portland** →

**Toll Plaza Site 4  
SB I-205 Vic. SR 14**

**Figure 12**



**I-205 Oregon**

**I-205**

**Airport Way**

**Marine Drive**

**Columbia River**

**To Vancouver**

**Toll Plaza Site 5  
SB I-205 Vic. Airport Way**

**Figure 13**