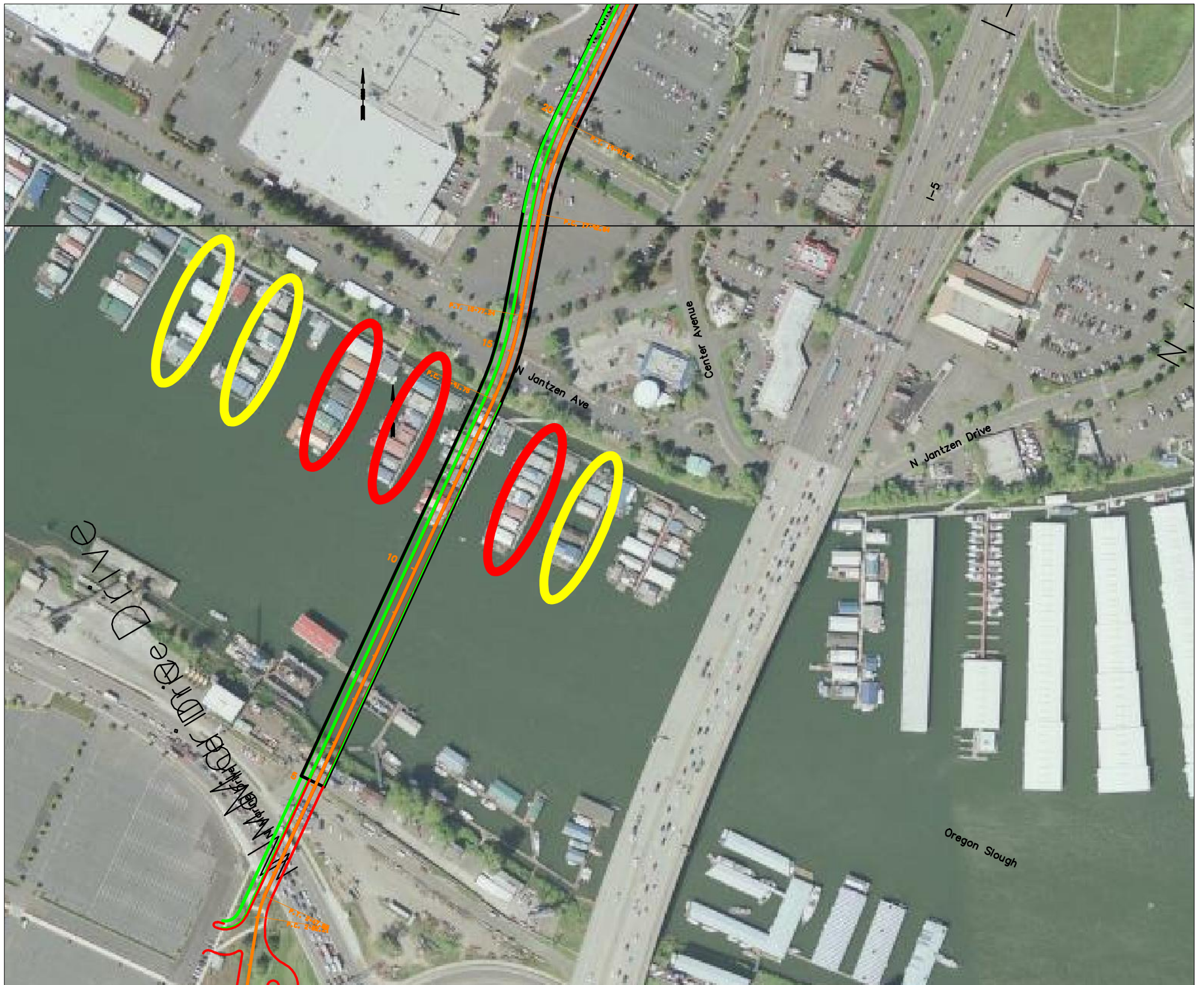


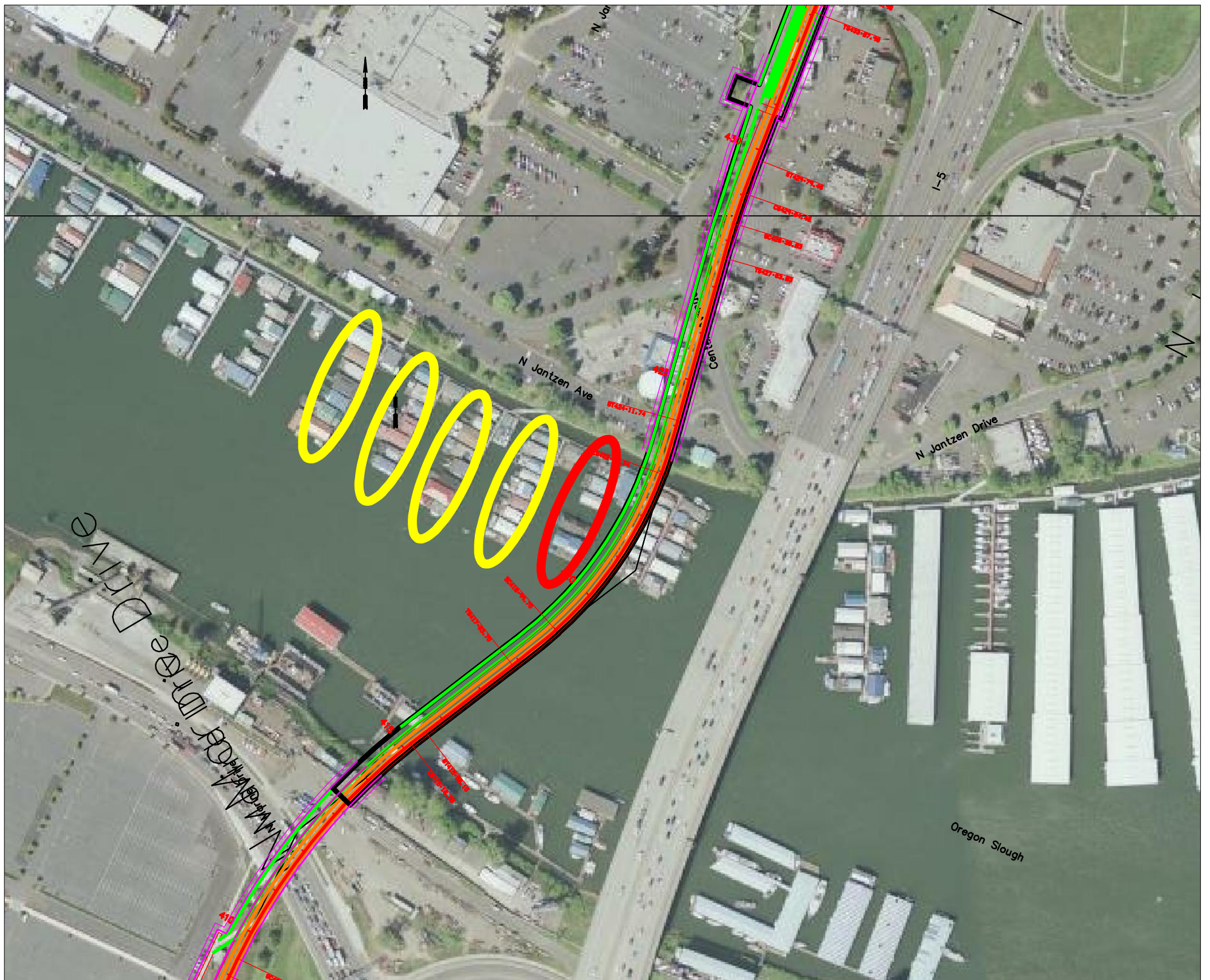
# BRT with Full Bridge Supplemental



## Replacement Bridge BRT Impacts and Mitigation Hayden Island Offset

- 21 BRT **severe** noise impacts - red circles
  - 21 BRT noise impacts - yellow circles
- 
- 8 to 12 foot noise walls for diesel buses

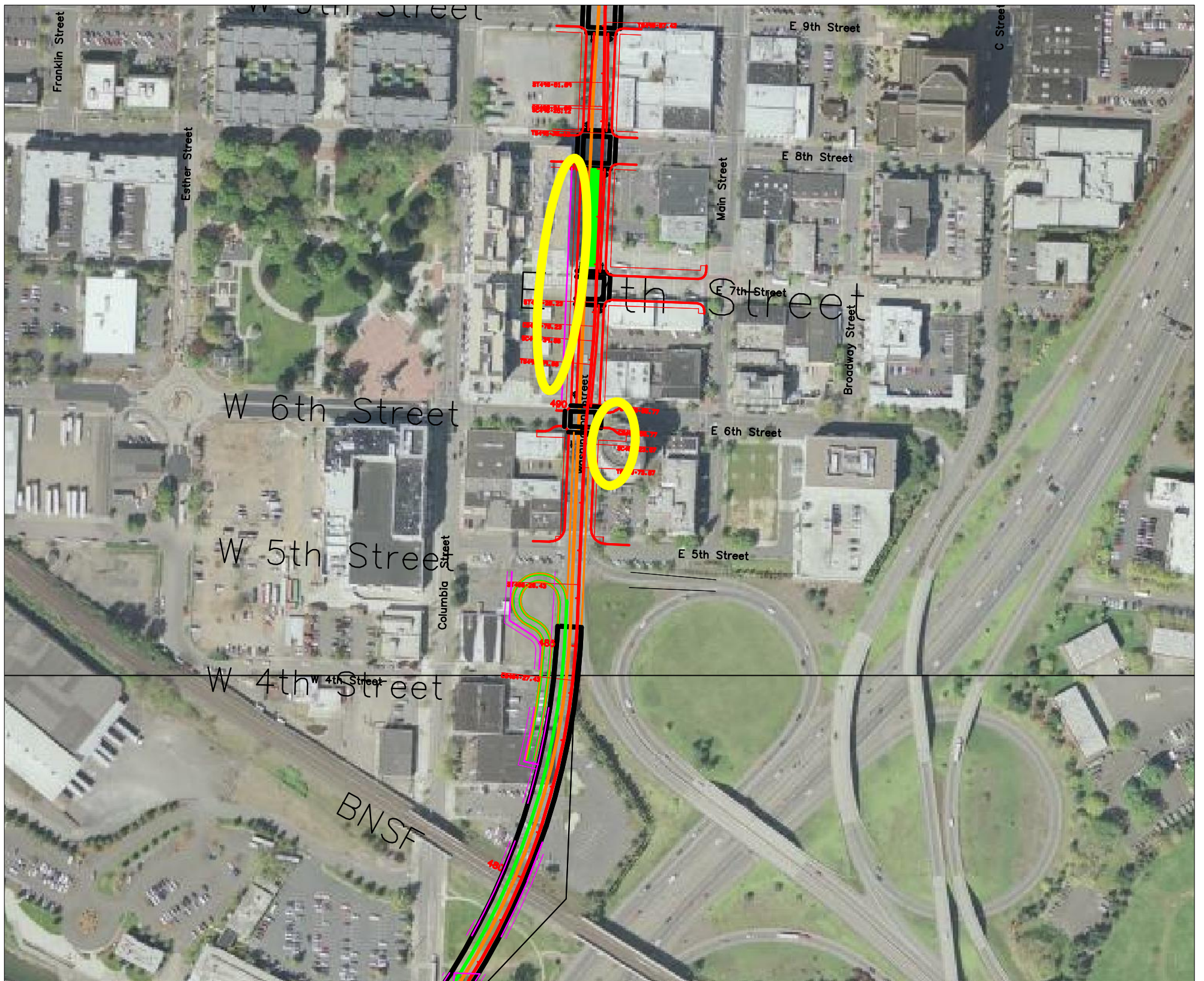
# BRT with Full Bridge Supplemental



## Replacement Bridge BRT Impacts and Mitigation Hayden Island Adjacent

- 7 BRT **severe** noise impacts - red circles
  - 28 BRT noise impacts - yellow circles
- 
- 8 to 12 foot noise walls for diesel buses

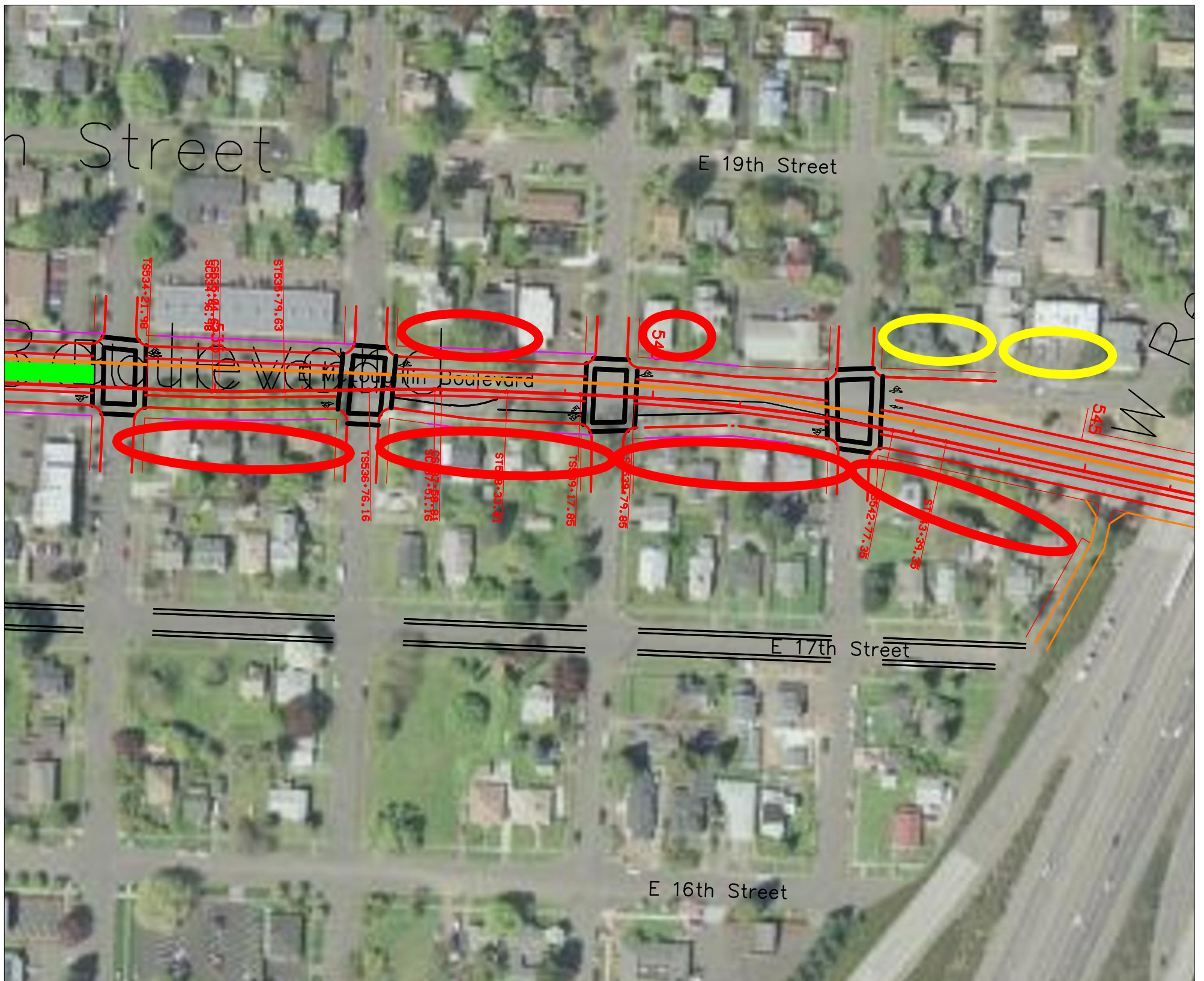
# BRT with Full Bridge Supplemental



## BRT Impacts and Mitigation Washington Downtown

- Impacts at 20 lower floor rooms of the Smith Tower facing Washington
  - 50 impacts along the 3rd and 4th floors facing Washington at the 700 Washington Building (CRC condos)
- 
- Possible window upgrades and ventilation systems at Smith Tower
  - None for CRC condos - noise levels in the units are within HUD standards.

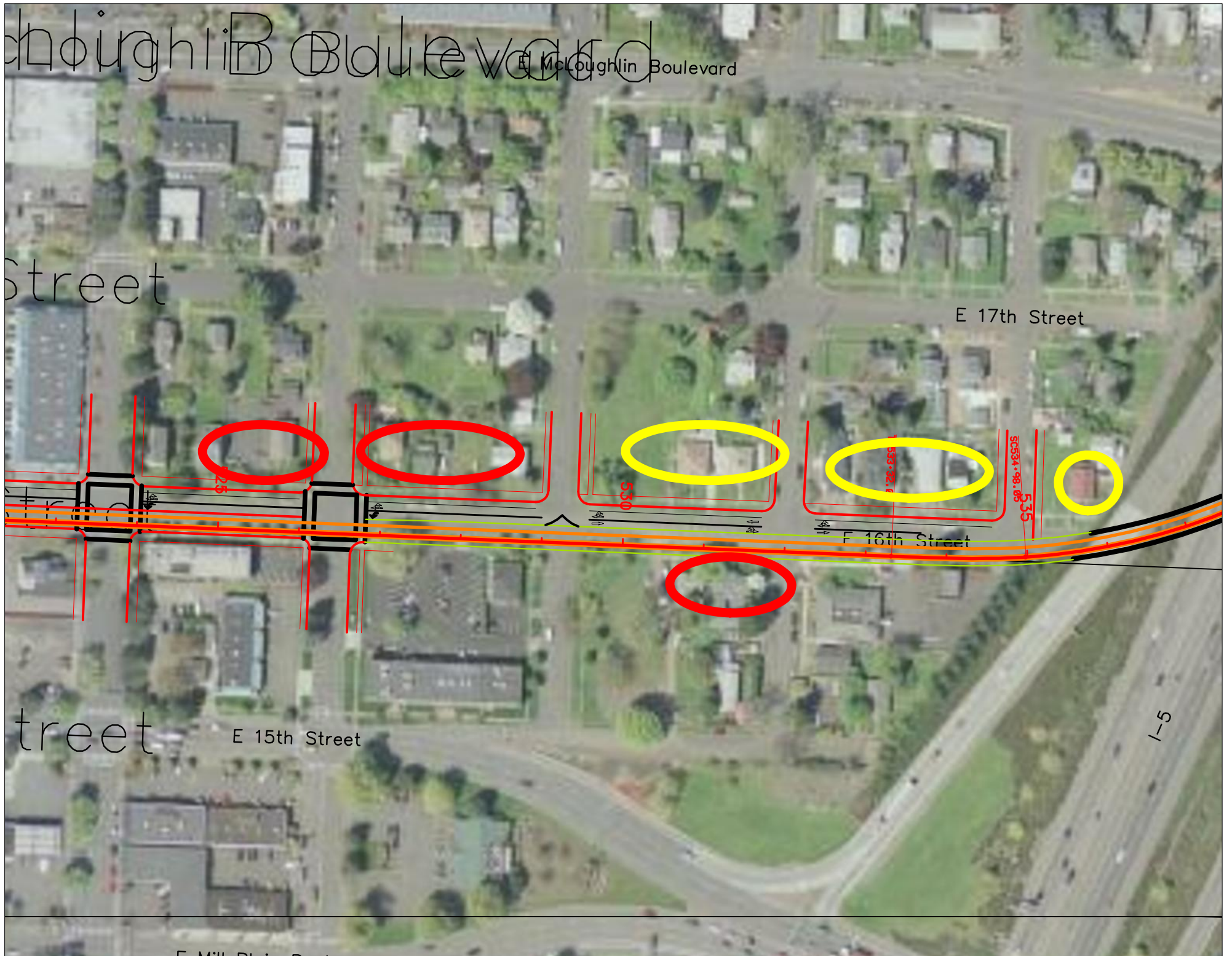
# BRT with Full Bridge Supplemental



## BRT Impacts and Mitigation McLoughlin Boulevard

- 19 **server** noise impacts On McLoughlin - red circles
  - 15 noise impacts - yellow circles
- 
- Sound insulation to within HUD standards.

# BRT with Full Bridge Supplemental



## BRT Impacts and Mitigation 16th Street Alignment

- 7 noise impacts Broadway - yellow circle
- 10 **server** noise impacts - red circle

- Mitigate using sound insulation program to within HUD standards.

Note, if the analysis is performed assuming I-5 noise mitigation, the impacts remain the same severity

# BRT with Full Bridge Supplemental



## BRT Impacts and Mitigation I-5 Flyover

- 12 **severe** noise impacts along I-5 - red circles
- 3 noise impacts along I-5

Impacts due to flyover bus acceleration at 6% grade

- Sound walls on the structure - 8 to 10 feet.

Note: if the analysis is preformed with the I-5 noise mitigation considered, all 15 impacts are **server**

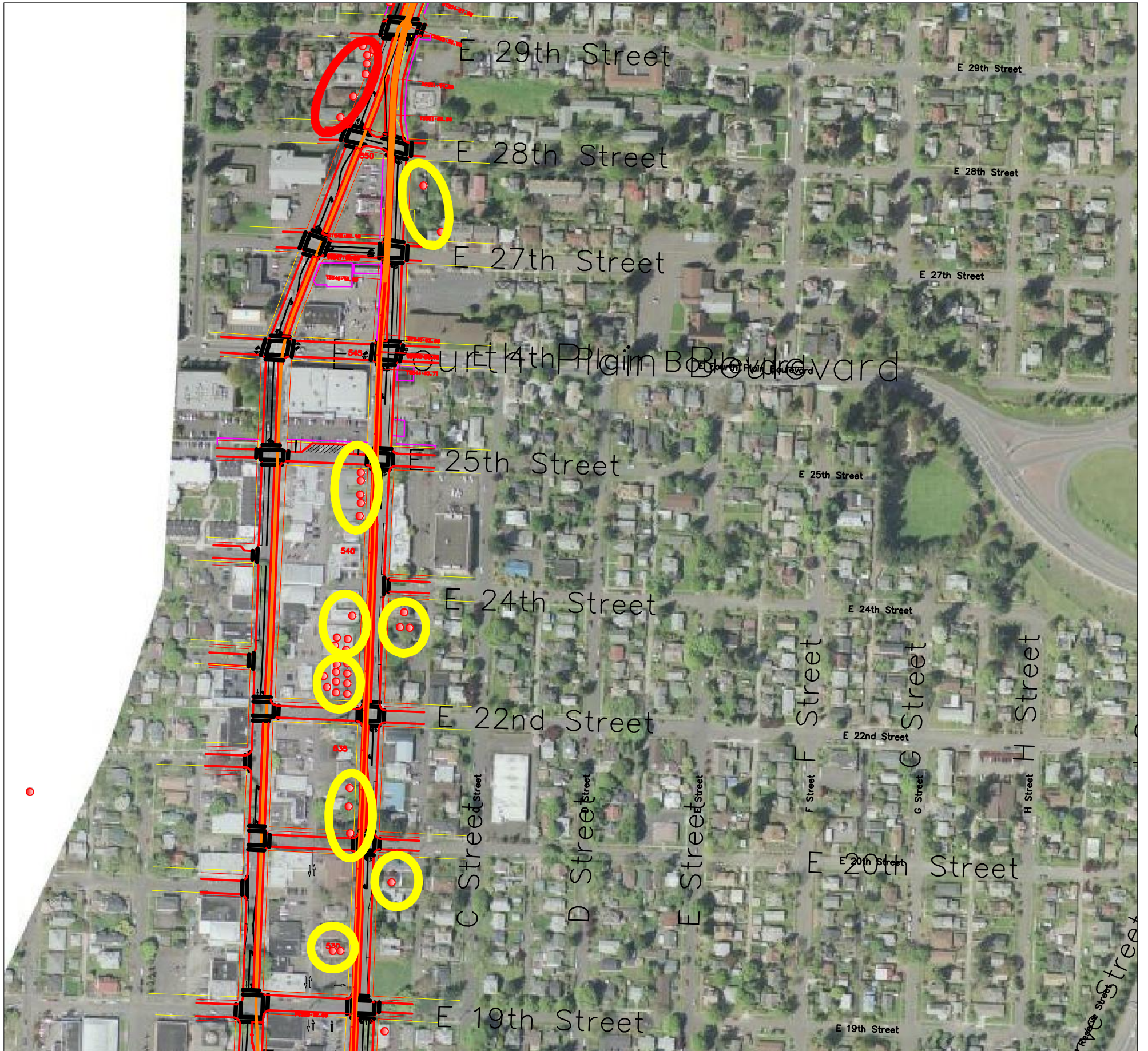
# BRT with Full Bridge Supplemental



## BRT Impacts and Mitigation Broadway 2-way

- 30 **severe** noise impacts Broadway and Main - red circles
  - 9 noise impacts along Broadway and Main
- 
- Mitigate using sound insulation program to within HUD standards.

# BRT with Full Bridge Supplemental

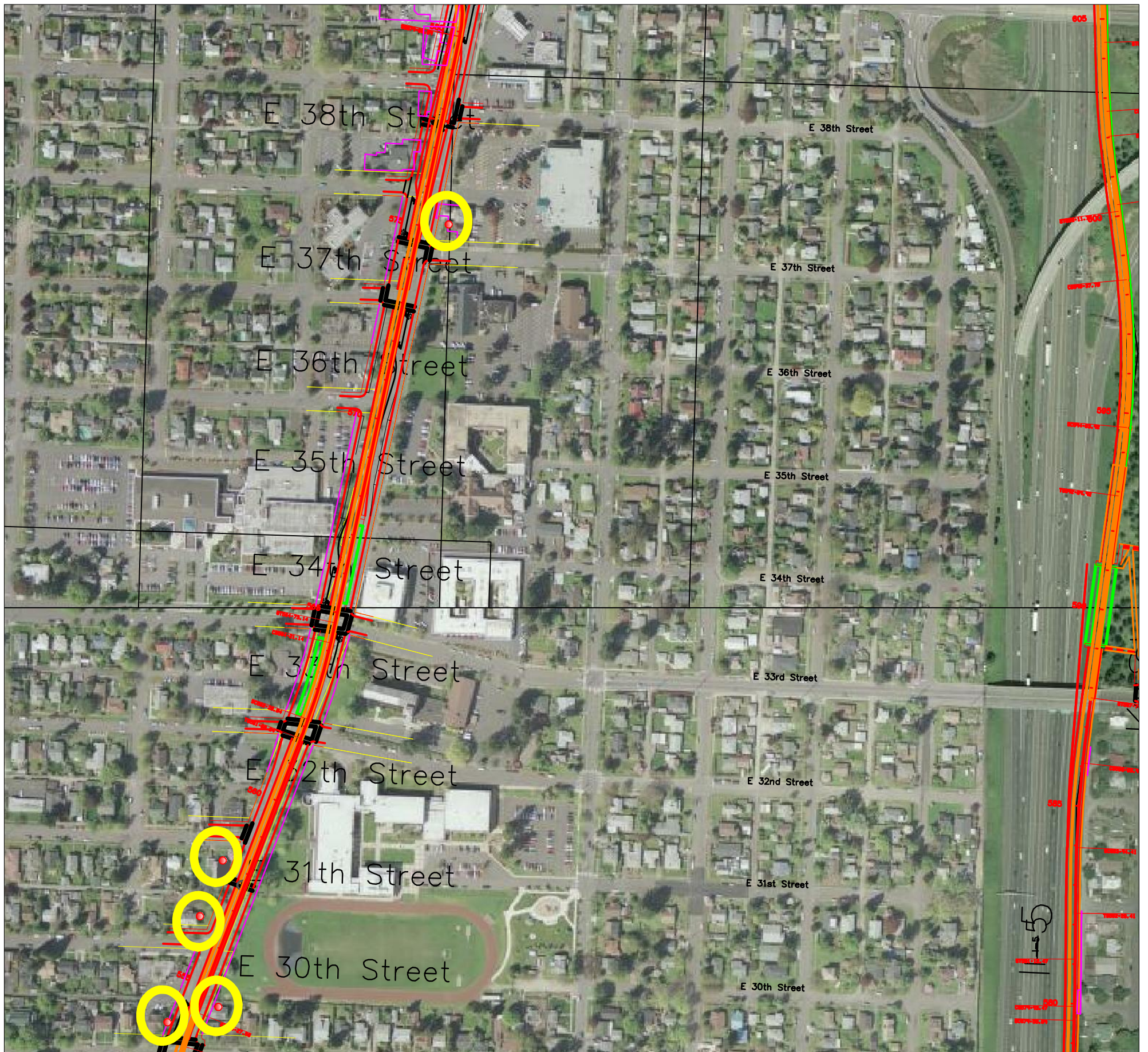


## BRT Impacts and Mitigation Broadway Couplet

- 8 **server** noise impacts on Main
  - 31 noise impacts on Broadway
- 
- Mitigate using sound insulation program to within HUD standards.



# BRT with Full Bridge Supplemental



## BRT Impacts and Mitigation Main North of 29th

- 8 noise impacts Broadway - yellow circle - includes the fire station
- Mitigate using sound insulation program to within HUD standards.