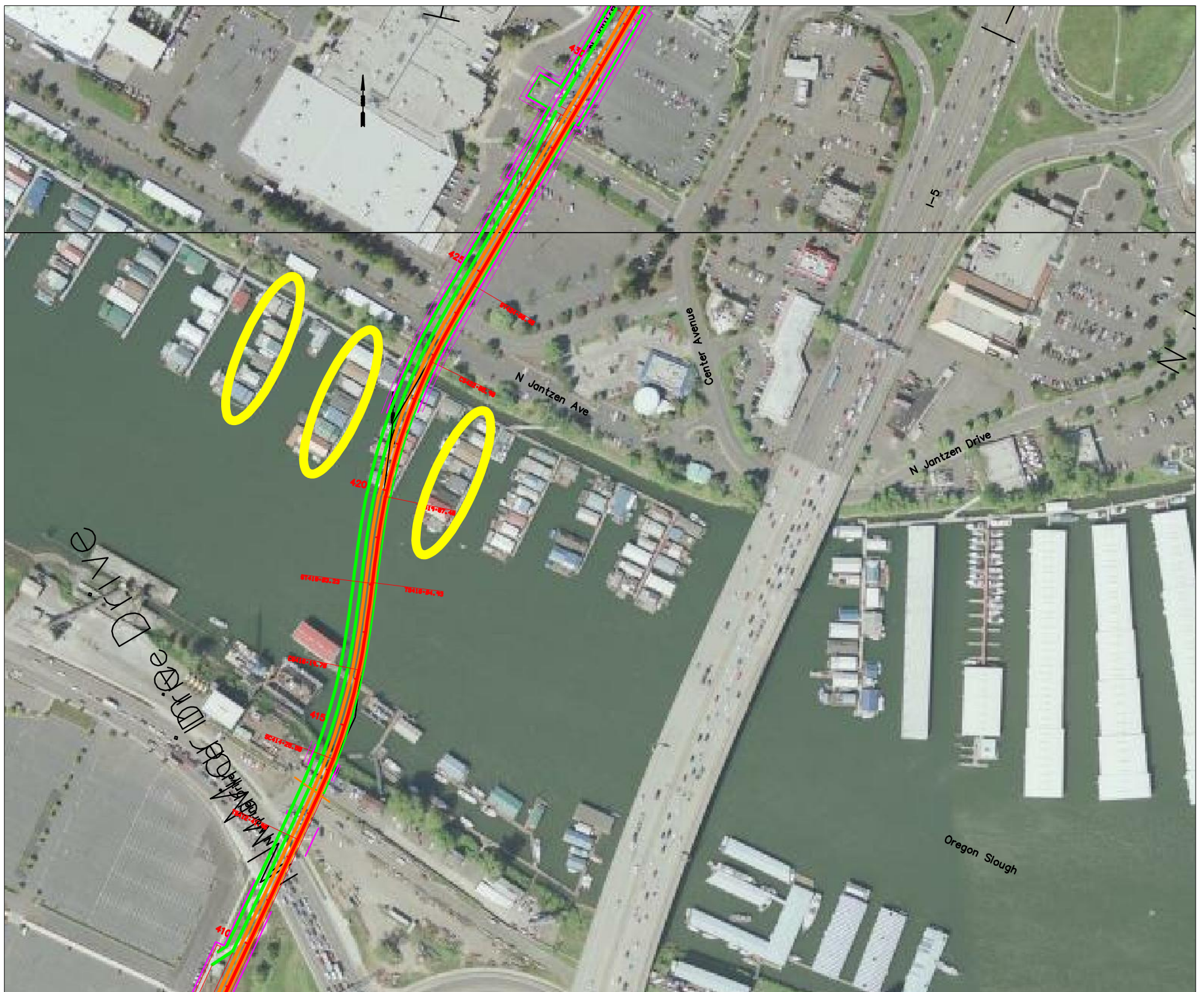


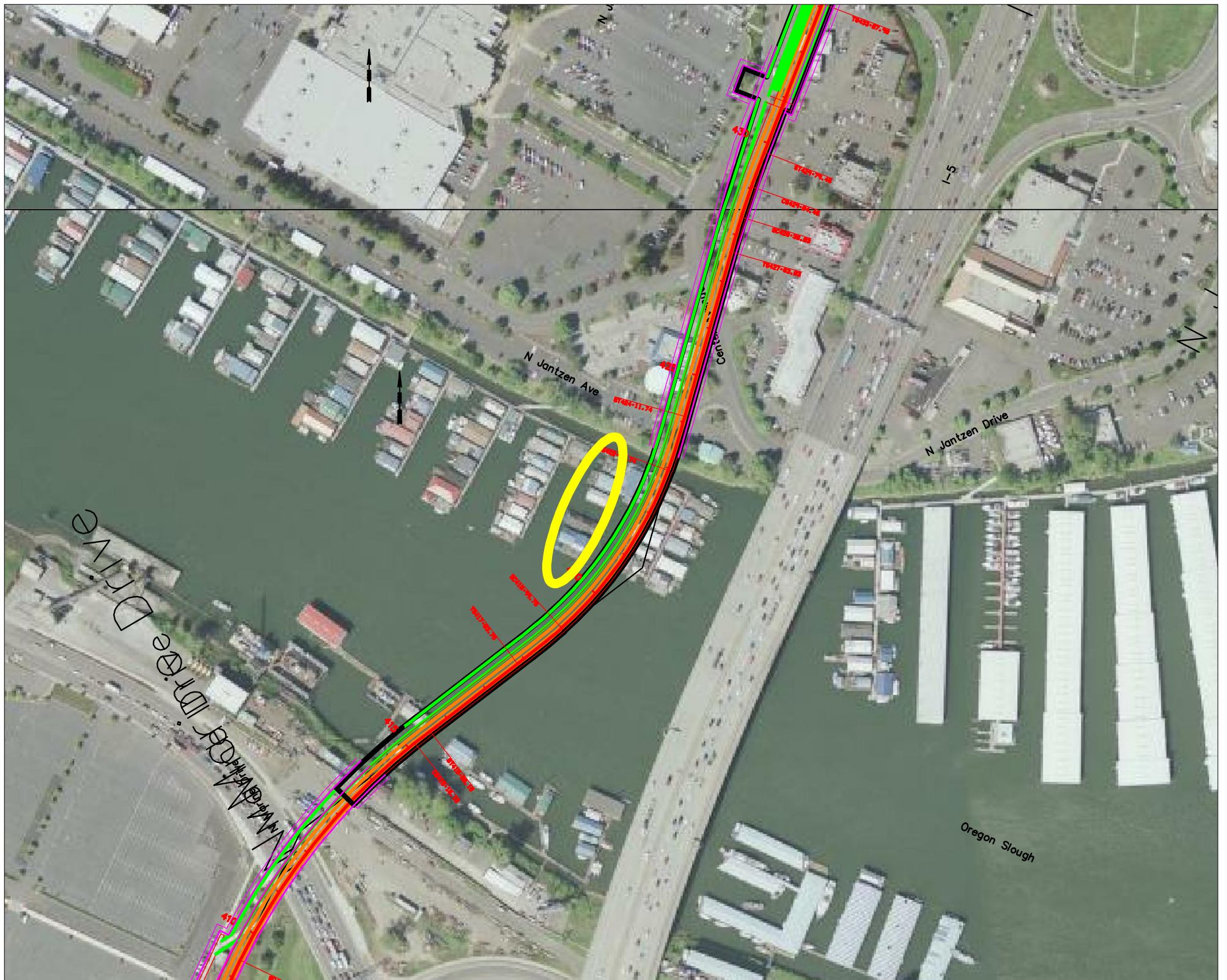
# LRT with Full Bridge Supplemental



## Supplemental Bridge LRT Impacts and Mitigation Hayden Island Offset

- 21 LRT noise impacts
- 4 foot noise walls on structure

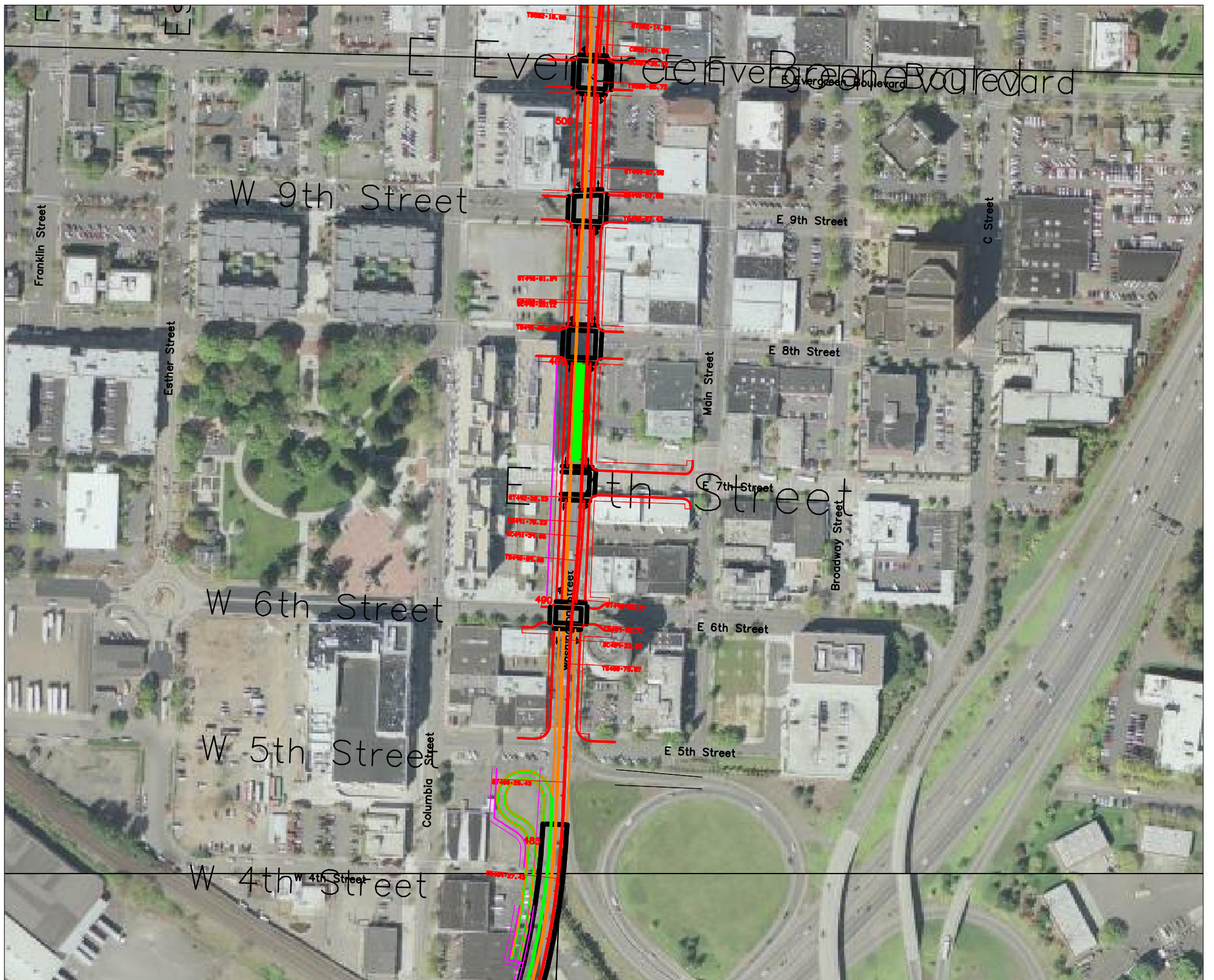
# LRT with Full Bridge Supplemental



## Supplemental Bridge LRT Impacts and Mitigation Hayden Island Adjacent

- 7 noise Impacts - yellow circles
- 4 foot noise walls on structure

# LRT with Full Bridge Supplemental



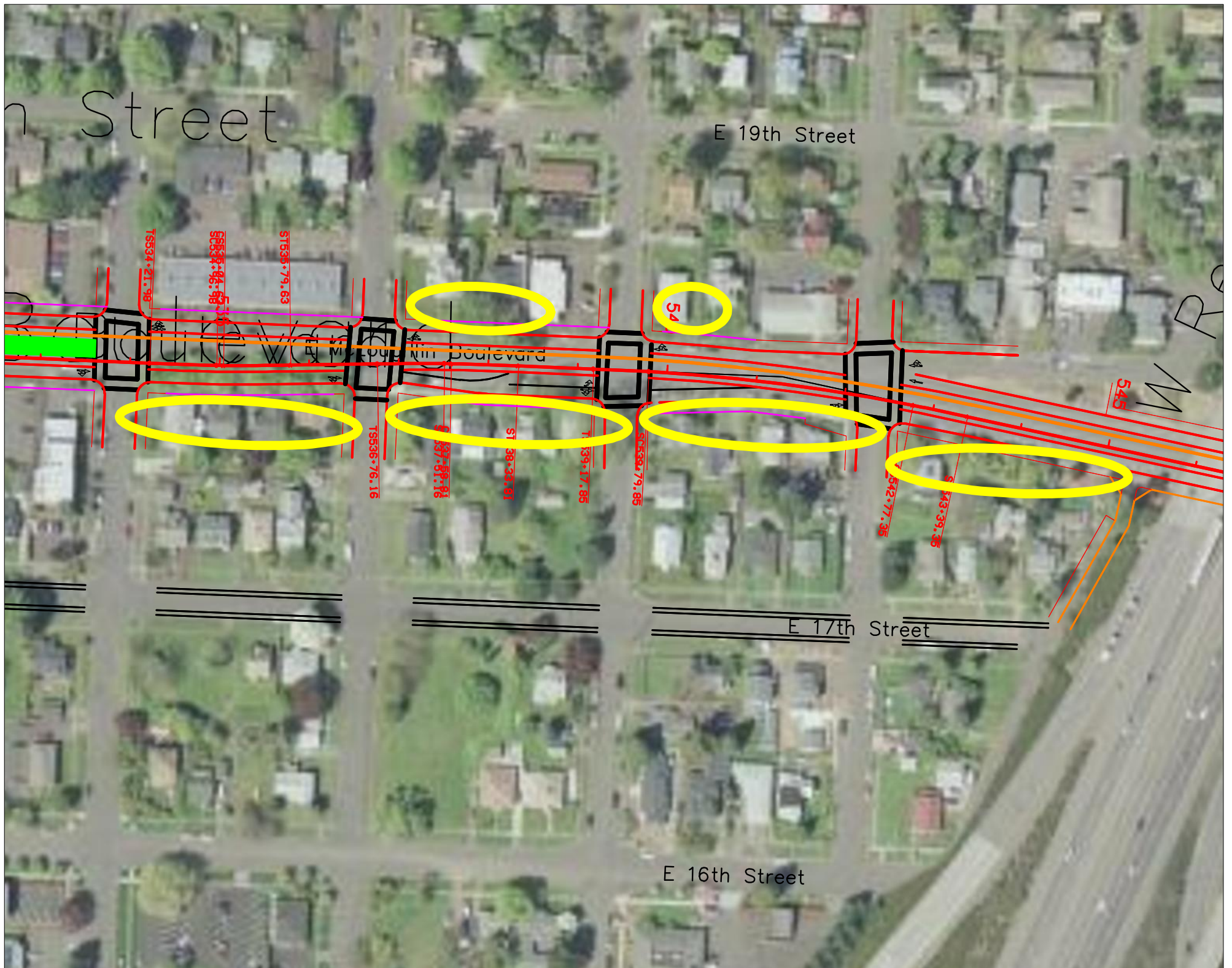
## LRT Impacts and Mitigation Washington Downtown

- No LRT noise impacts

---

- None - no impacts.

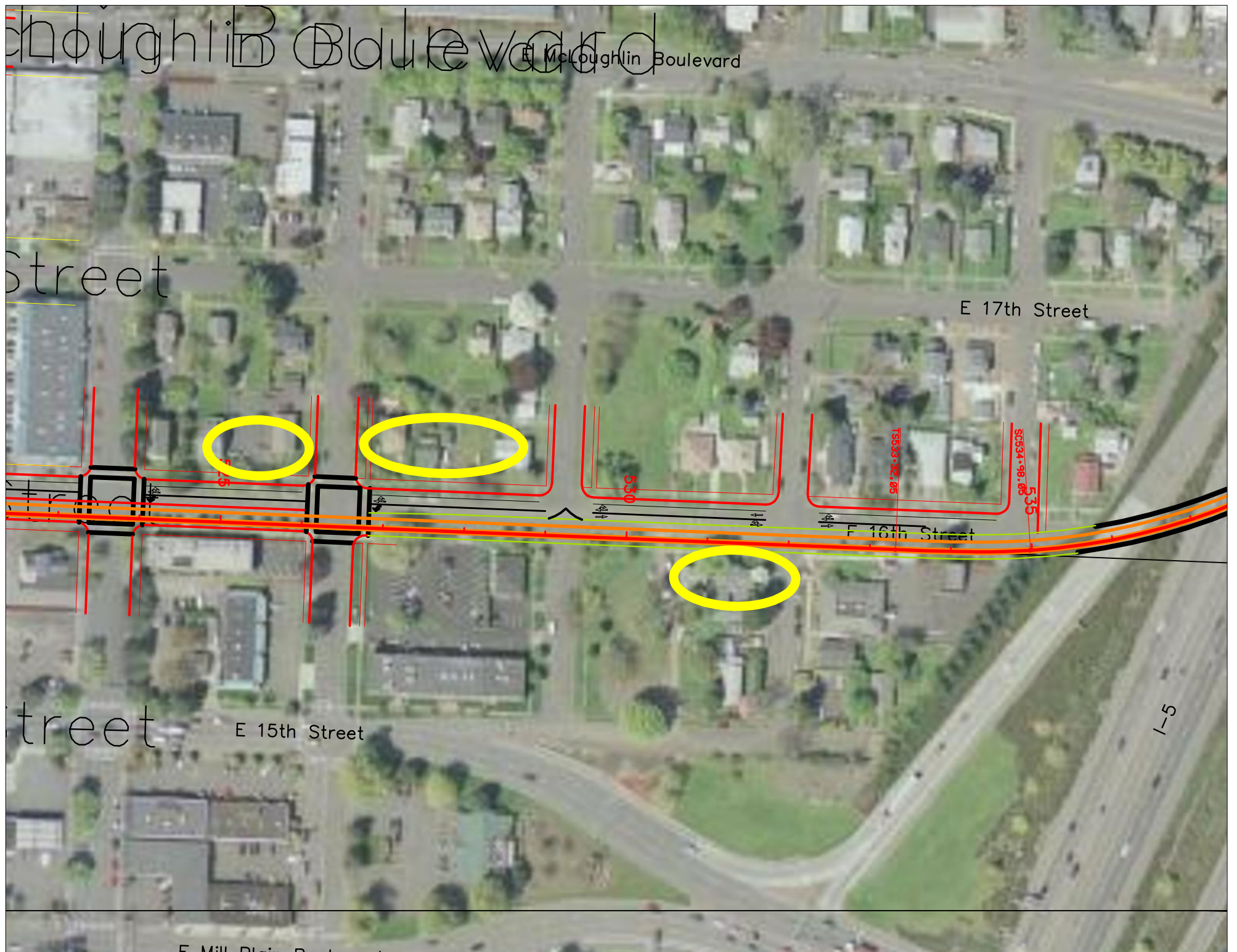
# LRT with Full Bridge Supplemental



## Supplemental LRT Impacts and Mitigation McLoughlin Boulevard

- 19 noise impacts On McLoughlin
- Sound insulation to within HUD standards.

# LRT with Full Bridge Supplemental



## Supplemental LRT Impacts and Mitigation 16th Street Alignment

- 10 noise impacts Broadway - yellow circle

- Mitigate using sound insulation program to within HUD standards.

Note, if the analysis is performed assuming I-5 noise mitigation, the impacts remain the same severity

# LRT with Full Bridge Supplemental



## Supplemental LRT Impacts and Mitigation I-5 Flyover

- No noise impacts along I-5

- May put sound walls on the structure - 4 feet.

Note: if the analysis is preformed with the I-5 noise mitigation considered there are 12 residential impacts shown in the magenta circle. Placing the 4-foot wall will insure that there are no noise impacts

# LRT with Full Bridge Supplemental



## LRT Impacts and Mitigation Broadway 2-way

- 30 noise impacts along Broadway + Main
- Mitigate using sound insulation program to within HUD standards.

# LRT with Full Bridge Supplemental

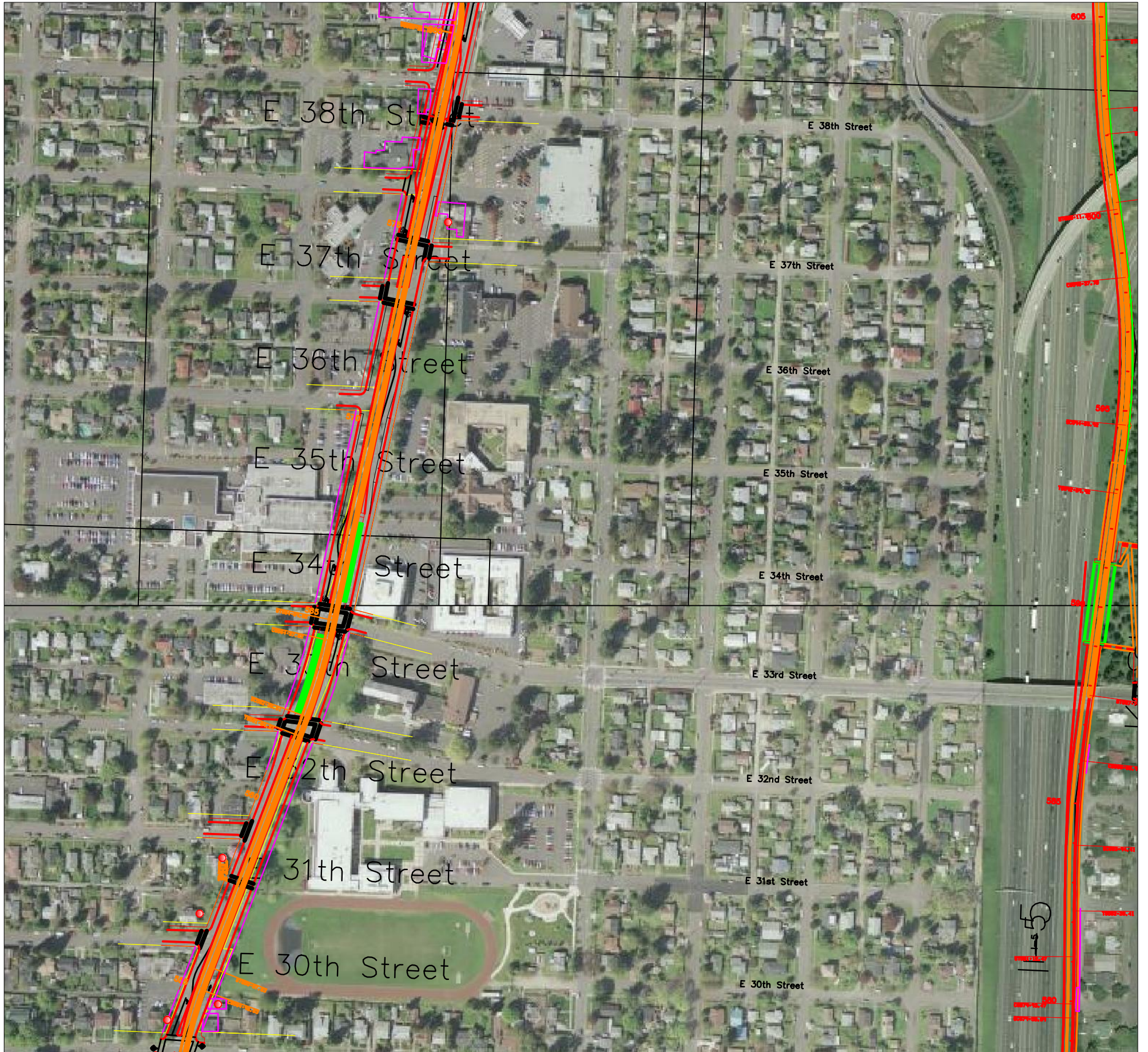


## LRT Impacts and Mitigation Broadway Couplet

- No noise impacts along Broadway



# LRT with Full Bridge Supplemental



## LRT Impacts and Mitigation Main North of 29th

- No noise impacts