

Bridgeton

NEIGHBORHOOD ASSOCIATION

DATE: June 30, 2008



TO: Mayor Tom Potter
 City Commissioner Sam Adams
 City Commissioner Nick Fish
 City Commissioner Randy Leonard
 City Commissioner Dan Saltzman
 PDC Chair Rosenbaum
 PDC Commissioner Ferran
 PDC Commissioner Kadri
 PDC Commissioner Mohlis
 PDC Commissioner Wilhoit
 Columbia River Task Force
 Portland Planning Commission

RECEIVED

JUN 30 2008

Columbia River Crossing

COPY: Bruce Warner, PDC Executive Director

FROM: Bridgeton Neighborhood Association, Leslie Sawyer, Chair

SUBJECT: Columbia River Crossing – Recommendations for the Locally Preferred Alternative

The Bridgeton Neighborhood Association represents the people who work and live in the area north of Marine Drive to the middle of the North Portland Harbor from I-5 on the west to the Portland Yacht Club on the east. We have a small, diverse population that will be extremely impacted by changes/non-changes to the I-5 Bridge. Our community is growing and so is the frustration with limited access to I-5 during rush hours. Cars waiting to enter I-5 north off of Martin Luther King Blvd backup blocking the Gantenbein entrance to Marine Drive. Our closest stores are on Hayden Island yet one of the options would not allow a direct route to the island.

We have invited CRC Task Force members to make many presentations about the project. At the conclusion of our June 18th meeting with CRC representatives, a majority of BNA members present voted to recommend Alternative 3: Replacement crossing with light rail as our preferred alternative.

The following is a more complete list of the Bridgeton Neighborhood Association recommendations on the Draft EIS for the Columbia River Crossing:

1. Support the construction of a replacement bridge with light rail transit – Alternative 3 in the Draft EIS. -The BNA is supportive of efforts to identify the appropriate number of auxiliary lanes in the project area and thereby minimizing the footprint and associated impacts of the project on residents, businesses, and environmental and historic resources while building with green building practices.

2. Support the construction of auxiliary lanes connecting Hayden Island to Portland without accessing the main span of I-5 and allowing a direct link to/from Bridgeton via MLK.
3. Support light rail transit aligned along the west side of I-5 locating the light rail station adjacent to or over the intersection with Tomahawk Island Drive.
4. Support high quality architectural design and construction for the bridge and the light rail station.
5. Support world class bicycle and pedestrian facilities connecting Hayden Island with Portland and Vancouver including direct connections to an improved Bridgeton Trail. As part of the CRC construction funding should be arranged for the completion of the Bridgeton Trail. The Bridgeton Trail is a part of the 40 mile bike trail for Portland and the new raised bridge would be a great opportunity to add a much needed link along the top of the levee.
6. Support the development of active use spaces under I-5 and its ramps that are accessible for recreation, walking, boating and other community uses in a manner that is hospitable to the community.
7. Require a workable access to Martin Luther King Blvd south of the entrance onto I-5 for this growing community and all of it's neighbors in places like East Columbia. Several options were discussed at our meeting, but none appeared to be a really good fix for the neighbors and the associated truck traffic.
8. Support the development of land and better local street connections to the Bridgeton and Kenton neighborhoods with a revised Marine Drive interchange. BNA supports further study of design alternatives for this interchange while maintaining the importance of the interchange as the highest volume freight corridor in the state of Oregon and avoiding impacts to the Expo as a regional trade and event center. I will attach five diagrams to the copy going to the CRC group that illustrate the issues and a possible solution. If anyone else would like a copy please contact Leslie Sawyer at 503-314-2137.
9. Many concerns about tolling have been expressed by the BNA. We recommend that if the Interstate Bridge is tolled that further consideration of a fair and equitable rate structure be examined. We also recommend that if I-5 is tolled, that tolls also be placed on I-205 to avoid congesting this parallel corridor.
10. Strongly recommends that the agencies responsible for bidding and constructing this project hire and promote the use of local, certified MWESB contractors and include opportunities for apprenticeships for the local workforce.
11. BNA urges the creation of a Local Oversight Committee to work with the CRC project to finalize the design, financing, and contracting approach for the project. We also recommend that local decision makers, and the community, have an opportunity to weigh in again on the project as the many important details are finalized.

Thank you for the opportunity to comment. We look forward to hearing how many of the issues raised in this letter are resolved.

Respectfully submitted,
By Leslie Sawyer, Chair
Bridgeton Neighborhood Association
417 N Bridgeton Road
Portland, Oregon 97217
Cell 503-314-2137

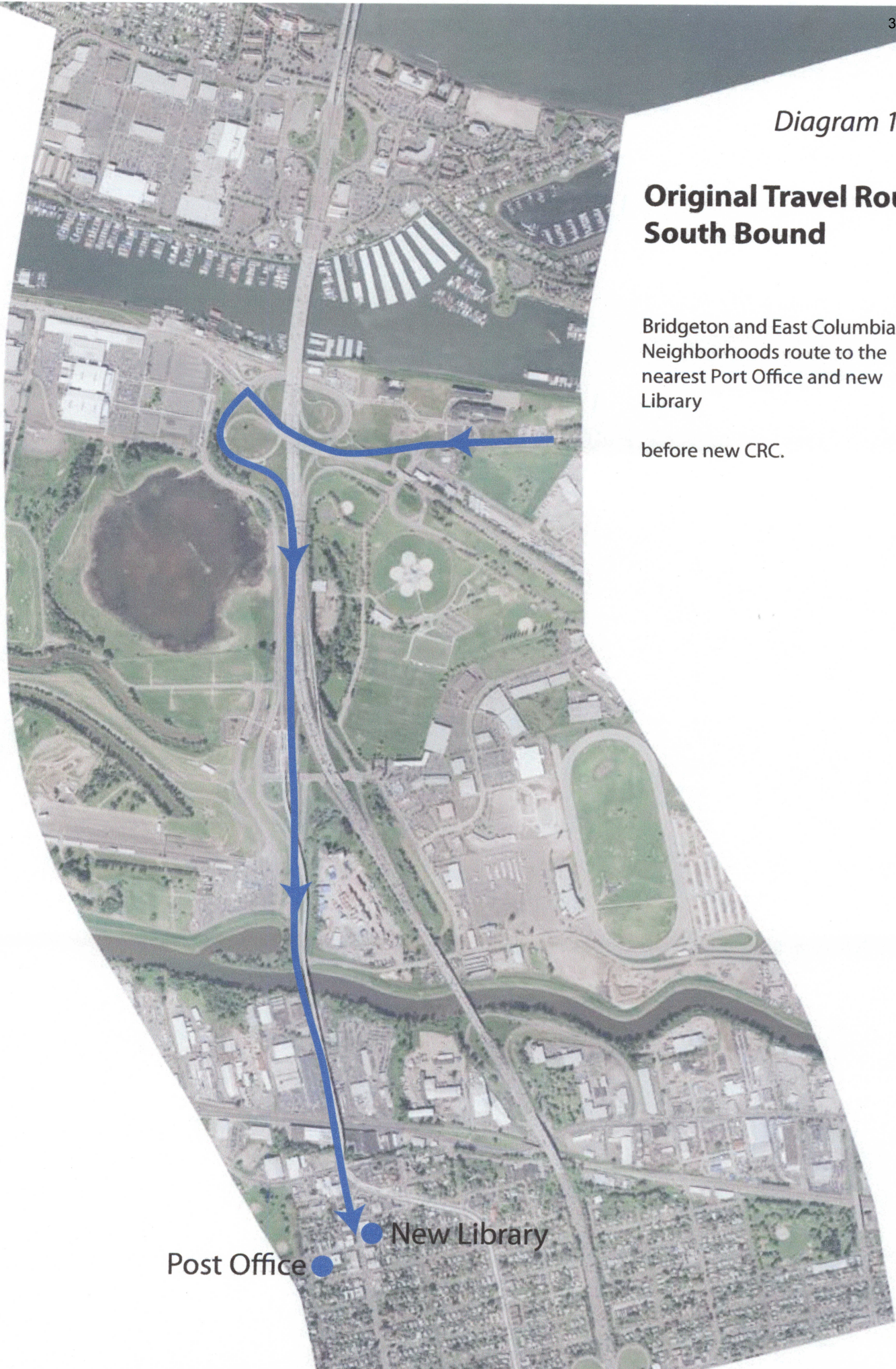
Attached please find copies of diagrams showing the south bound issues getting to the Kenton neighborhood.

Diagram 1

Original Travel Route South Bound

Bridgeton and East Columbia Neighborhoods route to the nearest Port Office and new Library

before new CRC.



Post Office ● New Library

Diagram 2

New Travel Route South Bound Using Only I-5

Bridgeton and East Columbia Neighborhoods route to the nearest Port Office and new Library

new CRC Marine Drive North Alignment.

Cannot exit at Delta Park due to braided ramps

Post Office ● New Library

Requires travel to Rosa Park Way Intersection then back up to post office via Interstate Avenue.



Diagram 3

**New Travel Route
South Bound
Using Hayden
Meadows
Marine Drive
North Alignment**

Bridgeton and East Columbia
Neighborhoods route to the
nearest Port Office and new
Library

along CRC Marine Drive
North Alignment.



Post Office ● New Library

Diagram 4

**New Travel Route
South Bound
Using Force Ave
Marine Drive
North Alignment**

Bridgeton and East Columbia
Neighborhoods route to the
nearest Port Office and new
Library

along new CRC Marine Drive
North Alignment.



Post Office ● New Library

Diagram 5

**New Travel Route
South Bound
Using Local Streets
Marine Drive
South Alignment**

Bridgeton and East Columbia
Neighborhoods route to the
nearest Port Office and new
Library

along new CRC Marine Drive
South Alignment.



Post Office ● New Library