



700 WASHINGTON STREET
SUITE 300
VANCOUVER, WA 98660
360-737-2726 | 503-256-2726

TRANSMITTAL

DATE: November 2, 2012
TO: Jason Ritchie, FAA
Andrew Edstrom, FAA
FROM: Heather Wills, CRC *mn for*
SUBJECT: Mid-Level Feasibility Study, RUSH
COPY: Bruce Fisher, FAA
Stan Allison, FAA
Project Files

- AS YOU REQUESTED
- FOR YOUR APPROVAL
- RETURN REQUESTED
- FOR YOUR RESPONSE
- RECORDS MANAGEMENT
- FOR YOUR USE
- FOR YOUR COMMENT

ITEM	COPIES	DESCRIPTION
1	Electronic	Plan, Profile, Cross-sections and excel file of Points for analysis
2	Electronic	Submitted 116 (each) 7460-1 forms through your website of the same points for analysis under the Columbia River Crossing Sponsor Name.

Comments:

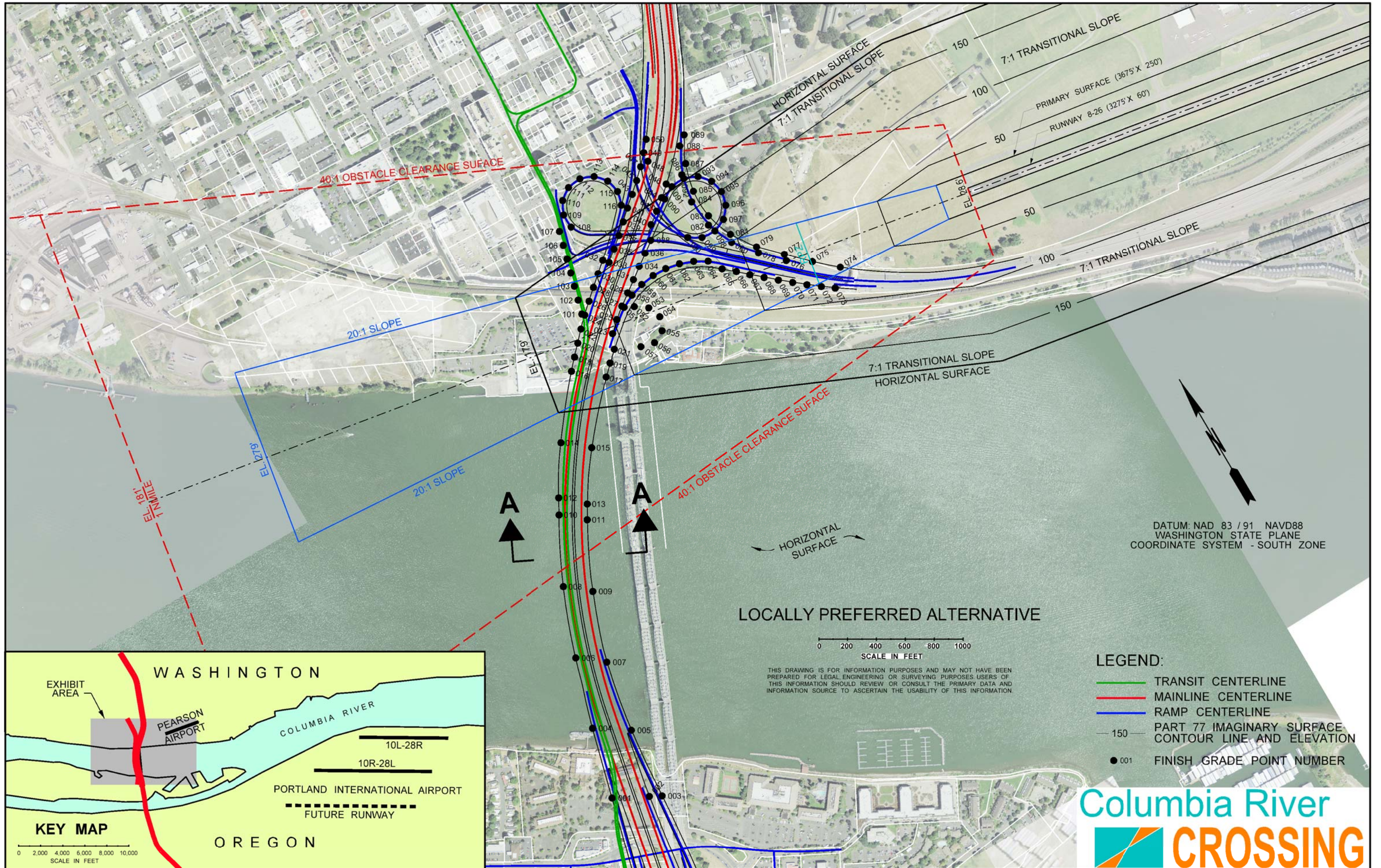
Jason and Andrew,

Attached is a .pdf of the plan, profile, cross-sections including latitude, longitude and elevations of points along the proposed structures, highway and transit alignments.

Consider this submittal:

- NRA Feasibility Study
- Rush
- 1A level of accuracy of design
- On airport
- All points refer to NAD 83/91 and NAVD 88 Datums
- **Special Request:** If there is penetration into a surface, please provide the distance of penetration, and if there is not penetration, please provide the distance to penetration.
- Analysis for both PDX and VUO.

If you have questions or need clarification, please ask.



40:1 OBSTACLE CLEARANCE SURFACE

20:1 SLOPE

HORIZONTAL SURFACE
7:1 TRANSITIONAL SLOPE

7:1 TRANSITIONAL SLOPE

PRIMARY SURFACE (3675' X 250')
RUNWAY 8-26 (3275' X 60')

7:1 TRANSITIONAL SLOPE

7:1 TRANSITIONAL SLOPE
HORIZONTAL SURFACE

40:1 OBSTACLE CLEARANCE SURFACE

LOCALLY PREFERRED ALTERNATIVE

0 200 400 600 800 1000
SCALE IN FEET

THIS DRAWING IS FOR INFORMATION PURPOSES AND MAY NOT HAVE BEEN PREPARED FOR LEGAL ENGINEERING OR SURVEYING PURPOSES. USERS OF THIS INFORMATION SHOULD REVIEW OR CONSULT THE PRIMARY DATA AND INFORMATION SOURCE TO ASCERTAIN THE USABILITY OF THIS INFORMATION.

DATUM: NAD 83 / 91 NAVD88
WASHINGTON STATE PLANE
COORDINATE SYSTEM - SOUTH ZONE

LEGEND:

- TRANSIT CENTERLINE
- MAINLINE CENTERLINE
- RAMP CENTERLINE
- 150 — PART 77 IMAGINARY SURFACE CONTOUR LINE AND ELEVATION
- 001 FINISH GRADE POINT NUMBER



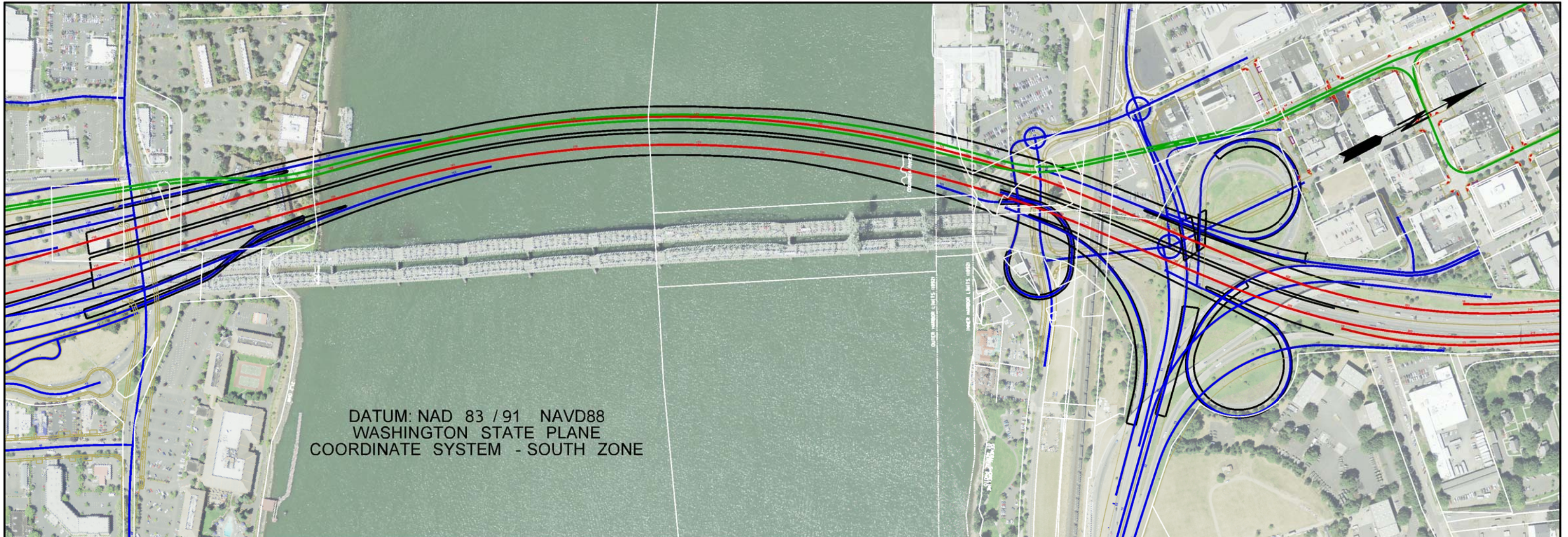
DATUM: NAD 83/91 NAVD88

POINT NAME	LATITUDE	LONGITUDE	*CRB FINISHED GRADE ELEV.	**ADD'L HT ABOVE FG	OVERALL HEIGHT	OBSTACLE TYPE
001	45°36' 51.46" N	122°40' 45.13" W	97.53	35	133	SIGNS AND ILLUMINATION
002	45°36' 50.33" N	122°40' 41.89" W	98.97	35	134	SIGNS AND ILLUMINATION
003	45°36' 49.95" N	122°40' 40.78" W	96.25	35	131	SIGNS AND ILLUMINATION
004	45°36' 56.27" N	122°40' 43.51" W	120.94	35	156	SIGNS AND ILLUMINATION
005	45°36' 54.88" N	122°40' 40.31" W	115.79	35	151	SIGNS AND ILLUMINATION
006	45°37' 01.02" N	122°40' 41.65" W	139.33	35	174	SIGNS AND ILLUMINATION
007	45°36' 59.75" N	122°40' 39.20" W	134.44	35	169	SIGNS AND ILLUMINATION
008	45°37' 05.69" N	122°40' 39.35" W	152.53	35	188	SIGNS AND ILLUMINATION
009	45°37' 04.44" N	122°40' 37.07" W	148.20	35	183	SIGNS AND ILLUMINATION
010	45°37' 10.14" N	122°40' 36.32" W	156.93	35	192	SIGNS AND ILLUMINATION
011	45°37' 08.93" N	122°40' 34.16" W	152.85	35	188	SIGNS AND ILLUMINATION
012	45°37' 11.17" N	122°40' 35.55" W	156.82	35	192	SIGNS AND ILLUMINATION
013	45°37' 09.87" N	122°40' 33.42" W	152.64	35	188	SIGNS AND ILLUMINATION
014	45°37' 14.40" N	122°40' 32.78" W	153.06	35	188	SIGNS AND ILLUMINATION
015	45°37' 13.09" N	122°40' 30.39" W	148.01	35	183	SIGNS AND ILLUMINATION
016	45°37' 18.32" N	122°40' 28.51" W	140.24	35	175	SIGNS AND ILLUMINATION
017	45°37' 16.84" N	122°40' 25.83" W	133.58	35	169	SIGNS AND ILLUMINATION
018	45°37' 19.07" N	122°40' 27.60" W	136.65	35	172	SIGNS AND ILLUMINATION
019	45°37' 17.54" N	122°40' 24.84" W	129.59	35	165	SIGNS AND ILLUMINATION
020	45°37' 19.80" N	122°40' 26.65" W	132.85	35	168	SIGNS AND ILLUMINATION
021	45°37' 18.23" N	122°40' 23.83" W	125.37	35	160	SIGNS AND ILLUMINATION
022	45°37' 20.54" N	122°40' 25.72" W	129.17	35	164	SIGNS AND ILLUMINATION
023	45°37' 19.22" N	122°40' 23.25" W	122.95	35	158	SIGNS AND ILLUMINATION
024	45°37' 21.25" N	122°40' 24.74" W	125.41	35	160	SIGNS AND ILLUMINATION
025	45°37' 19.92" N	122°40' 22.23" W	118.92	35	154	SIGNS AND ILLUMINATION
026	45°37' 21.93" N	122°40' 23.73" W	121.44	35	156	SIGNS AND ILLUMINATION
027	45°37' 20.56" N	122°40' 21.17" W	115.00	35	150	SIGNS AND ILLUMINATION
028	45°37' 22.61" N	122°40' 22.70" W	116.86	35	152	SIGNS AND ILLUMINATION
029	45°37' 21.17" N	122°40' 20.05" W	111.12	35	146	SIGNS AND ILLUMINATION
030	45°37' 23.27" N	122°40' 21.66" W	111.97	35	147	SIGNS AND ILLUMINATION
031	45°37' 21.77" N	122°40' 18.93" W	107.79	35	143	SIGNS AND ILLUMINATION
032	45°37' 23.94" N	122°40' 20.62" W	107.16	35	142	SIGNS AND ILLUMINATION
033	45°37' 23.59" N	122°40' 20.19" W	106.99	35	142	SIGNS AND ILLUMINATION
034	45°37' 22.37" N	122°40' 17.82" W	104.38	35	139	SIGNS AND ILLUMINATION
035	45°37' 24.25" N	122°40' 19.13" W	102.67	35	138	SIGNS AND ILLUMINATION
036	45°37' 22.97" N	122°40' 16.70" W	101.12	35	136	SIGNS AND ILLUMINATION
037	45°37' 24.90" N	122°40' 18.08" W	98.45	35	133	SIGNS AND ILLUMINATION
038	45°37' 23.57" N	122°40' 15.58" W	97.76	35	133	SIGNS AND ILLUMINATION
039	45°37' 25.58" N	122°40' 17.07" W	94.00	35	129	SIGNS AND ILLUMINATION
040	45°37' 24.50" N	122°40' 14.83" W	93.26	35	128	SIGNS AND ILLUMINATION
041	45°37' 26.27" N	122°40' 16.05" W	89.45	35	124	SIGNS AND ILLUMINATION
042	45°37' 25.12" N	122°40' 13.74" W	89.96	35	125	SIGNS AND ILLUMINATION
043	45°37' 26.93" N	122°40' 15.01" W	84.83	35	120	SIGNS AND ILLUMINATION
044	45°37' 25.76" N	122°40' 12.66" W	86.67	35	122	SIGNS AND ILLUMINATION
045	45°37' 27.60" N	122°40' 13.98" W	80.42	35	115	SIGNS AND ILLUMINATION
046	45°37' 26.42" N	122°40' 11.63" W	83.19	35	118	SIGNS AND ILLUMINATION
047	45°37' 28.31" N	122°40' 12.99" W	76.41	35	111	SIGNS AND ILLUMINATION
048	45°37' 28.39" N	122°40' 12.12" W	79.92	35	115	SIGNS AND ILLUMINATION
049	45°37' 29.04" N	122°40' 12.07" W	72.37	35	107	SIGNS AND ILLUMINATION
050	45°37' 29.76" N	122°40' 11.24" W	68.47	35	103	SIGNS AND ILLUMINATION
051	45°37' 20.42" N	122°40' 21.03" W	98.55	35	134	SIGNS AND ILLUMINATION
052	45°37' 20.12" N	122°40' 20.13" W	80.20	17	97	EMERGENCY VEHICLE
053	45°37' 19.57" N	122°40' 18.97" W	75.83	17	93	EMERGENCY VEHICLE
054	45°37' 18.68" N	122°40' 18.45" W	73.12	17	90	EMERGENCY VEHICLE
055	45°37' 17.77" N	122°40' 18.91" W	71.24	17	88	EMERGENCY VEHICLE
056	45°37' 17.30" N	122°40' 20.11" W	69.35	17	86	EMERGENCY VEHICLE
057	45°37' 17.51" N	122°40' 21.45" W	67.47	17	84	EMERGENCY VEHICLE
058	45°37' 20.88" N	122°40' 19.79" W	93.65	35	129	SIGNS AND ILLUMINATION
059	45°37' 21.20" N	122°40' 18.46" W	88.75	35	124	SIGNS AND ILLUMINATION
060	45°37' 21.39" N	122°40' 17.07" W	83.86	35	119	SIGNS AND ILLUMINATION
061	45°37' 21.36" N	122°40' 15.67" W	78.96	35	114	SIGNS AND ILLUMINATION
062	45°37' 21.19" N	122°40' 14.28" W	74.06	35	109	SIGNS AND ILLUMINATION
063	45°37' 20.87" N	122°40' 12.95" W	69.16	35	104	SIGNS AND ILLUMINATION
064	45°37' 20.40" N	122°40' 11.72" W	64.25	35	99	SIGNS AND ILLUMINATION
065	45°37' 19.48" N	122°40' 10.88" W	57.58	35	93	SIGNS AND ILLUMINATION
066	45°37' 18.85" N	122°40' 09.80" W	54.80	35	90	SIGNS AND ILLUMINATION
067	45°37' 18.22" N	122°40' 08.79" W	51.55	35	87	SIGNS AND ILLUMINATION
068	45°37' 17.59" N	122°40' 07.71" W	47.91	35	83	SIGNS AND ILLUMINATION
069	45°37' 16.96" N	122°40' 06.63" W	43.97	35	79	SIGNS AND ILLUMINATION
070	45°37' 16.34" N	122°40' 05.53" W	40.61	35	76	SIGNS AND ILLUMINATION
071	45°37' 15.74" N	122°40' 04.41" W	34.63	35	70	SIGNS AND ILLUMINATION
072	45°37' 15.15" N	122°40' 03.28" W	24.23	35	59	SIGNS AND ILLUMINATION
073	45°37' 14.59" N	122°40' 02.12" W	14.21	35	49	SIGNS AND ILLUMINATION
074	45°37' 15.67" N	122°40' 00.71" W	29.72	35	65	SIGNS AND ILLUMINATION
075	45°37' 16.95" N	122°40' 02.86" W	30.70	35	66	SIGNS AND ILLUMINATION
076	45°37' 17.87" N	122°40' 05.03" W	34.37	35	69	SIGNS AND ILLUMINATION
077	45°37' 18.31" N	122°40' 04.89" W	34.44	35	69	SIGNS AND ILLUMINATION
078	45°37' 19.26" N	122°40' 07.03" W	38.77	35	74	SIGNS AND ILLUMINATION
079	45°37' 19.69" N	122°40' 06.91" W	37.42	35	72	SIGNS AND ILLUMINATION
080	45°37' 20.78" N	122°40' 08.81" W	47.50	35	83	SIGNS AND ILLUMINATION
081	45°37' 21.30" N	122°40' 08.53" W	45.84	35	81	SIGNS AND ILLUMINATION
082	45°37' 22.57" N	122°40' 09.96" W	57.72	35	93	SIGNS AND ILLUMINATION
083	45°37' 23.14" N	122°40' 09.52" W	56.73	35	92	SIGNS AND ILLUMINATION
084	45°37' 24.52" N	122°40' 10.30" W	67.35	35	102	SIGNS AND ILLUMINATION
085	45°37' 25.10" N	122°40' 09.66" W	66.32	35	101	SIGNS AND ILLUMINATION
086	45°37' 26.47" N	122°40' 09.86" W	72.89	35	108	SIGNS AND ILLUMINATION
087	45°37' 27.00" N	122°40' 09.02" W	70.63	35	106	SIGNS AND ILLUMINATION
088	45°37' 28.26" N	122°40' 08.68" W	72.70	35	108	SIGNS AND ILLUMINATION
089	45°37' 28.78" N	122°40' 07.79" W	70.67	35	106	SIGNS AND ILLUMINATION
090	45°37' 25.58" N	122°40' 12.46" W	93.42	35	128	SIGNS AND ILLUMINATION
091	45°37' 26.09" N	122°40' 11.26" W	96.46	35	131	SIGNS AND ILLUMINATION
092	45°37' 26.18" N	122°40' 09.87" W	99.40	35	134	SIGNS AND ILLUMINATION
093	45°37' 25.82" N	122°40' 08.57" W	101.81	35	137	SIGNS AND ILLUMINATION
094	45°37' 25.09" N	122°40' 07.64" W	101.84	35	137	SIGNS AND ILLUMINATION
095	45°37' 24.15" N	122°40' 07.28" W	99.33	35	134	SIGNS AND ILLUMINATION
096	45°37' 23.19" N	122°40' 07.56" W	94.73	35	130	SIGNS AND ILLUMINATION
097	45°37' 22.43" N	122°40' 08.43" W	89.92	35	125	SIGNS AND ILLUMINATION
098	45°37' 22.02" N	122°40' 09.70" W	85.11	35	120	SIGNS AND ILLUMINATION
099	45°37' 22.05" N	122°40' 11.09" W	80.31	35	115	SIGNS AND ILLUMINATION
100	45°37' 22.52" N	122°40' 12.31" W	75.50	35	111	SIGNS AND ILLUMINATION
101	45°37' 21.40" N	122°40' 24.95" W	94.53	25	120	TRANSIT ENVELOPE
102	45°37' 22.36" N	122°40' 24.60" W	90.07	25	115	TRANSIT ENVELOPE
103	45°37' 23.32" N	122°40' 24.27" W	84.28	25	109	TRANSIT ENVELOPE
104	45°37' 24.23" N	122°40' 23.95" W	78.57	25	104	TRANSIT ENVELOPE
105	45°37' 25.19" N	122°40' 23.61" W	72.57	25	98	TRANSIT ENVELOPE
106	45°37' 26.15" N	122°40' 23.28" W	66.57	25	92	TRANSIT ENVELOPE
107	45°37' 27.10" N	122°40' 22.94" W	60.57	25	86	TRANSIT ENVELOPE
108	45°37' 26.98" N	122°40' 21.74" W	62.26	35	97	SIGNS AND ILLUMINATION
109	45°37' 27.96" N	122°40' 21.81" W	63.73	35	99	SIGNS AND ILLUMINATION
110	45°37' 28.84" N	122°40' 21.22" W	65.20	35	100	SIGNS AND ILLUMINATION
111	45°37' 29.43" N	122°40' 20.10" W	66.67	35	102	SIGNS AND ILLUMINATION
112	45°37' 29.58" N	122°40' 18.72" W	68.14	35	103	SIGNS AND ILLUMINATION
113	45°37' 29.25" N	122°40' 17.41" W	70.32	35	105	SIGNS AND ILLUMINATION
114	45°37' 28.53" N	122°40' 16.47" W	75.34	35	110	SIGNS AND ILLUMINATION
115	45°37' 27.59" N	122°40' 16.12" W	81.47	35	116	SIGNS AND ILLUMINATION
116	45°37' 26.64" N	122°40' 16.45" W	87.59	35	123	SIGNS AND ILLUMINATION

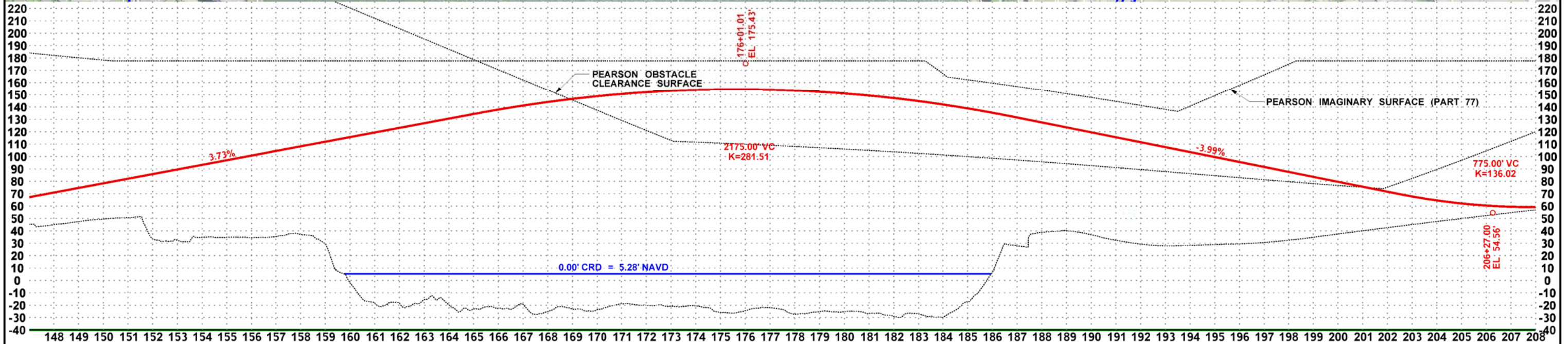
NOTES:

*DATA USED FOR "SITE ELEVATION" ON 7460-1 FORM

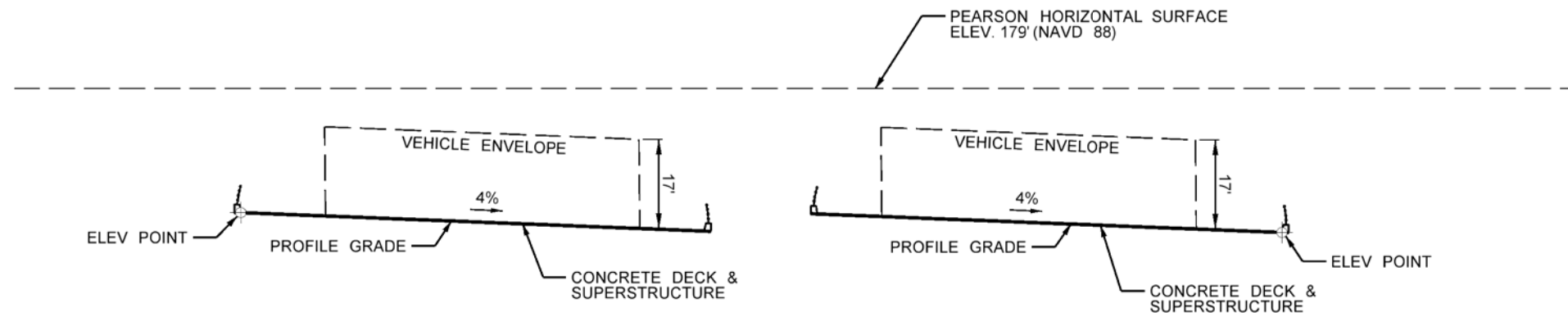
**DATA USED FOR "TOTAL STRUCTURE HEIGHT" ON 7460-1 FORM



DATUM: NAD 83 / 91 NAVD88
 WASHINGTON STATE PLANE
 COORDINATE SYSTEM - SOUTH ZONE



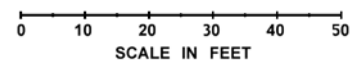
MID LEVEL VERTICAL CLEARANCE



SOUTHBOUND I-5
(STA. 173+12)

NORTHBOUND I-5
(STA. 173+00)

SECTION A-A





Federal Aviation Administration

<< OE/AAA

Notice of Proposed Construction or Alteration - On Airport

Project: Colu-176156695-12 Sponsor: Heather Wills

Details for Case

[Show Project Summary](#)

Sponsor (person, company, etc. proposing this action)	
Sponsor: Columbia River Crossing	
Construction / Alteration Information	Case Information
Notice Of: Construction	ASN: 2012-ANM-1244-NRA
Duration: Permanent	Component Type: PART 77
<i>if Temporary</i> : Months: Days:	Development Type: PART 77 - Bridge
Work Schedule - Start: 12/02/2014	Other Desc:
Work Schedule - End: 10/21/2021	Prior Study:
	Date Determined:
	Letters: None
	Documents: None
	Project Documents: 11/02/2012 CRC-FAA-Feasiblit...
Structure Details	Common Frequency Bands
Nearest State: OR	Low Freq High Freq Freq Unit ERP ERP Unit
Loc ID: VUO	
Airport: PEARSON FIELD	
City: VANCOUVER	
Latitude: 45-36-51.46 N	
Longitude: 122-40-45.13 W	
Horizontal Datum: NAD83	
Site Elevation (SE): 98 (nearest foot)	
Structure Height (AGL): 35 (nearest foot)	
Describe/Remarks	Specific Frequencies
Point #001 on pdf map attached. Datums used: NAD 83/91 and NAVD 88 NRA feasibility study 1A level of accuracy of design Special request: if there is penetration into a surface, please report the distance of penetration, and if there is not any penetration, please give feedback on the distance to penetration.	

