

APPENDIX A

ODOT and WSDOT Permits and Franchises

Permits Issued by ODOT for I-5 Right-of-Way

Permit No.	Year Issued	Utility Type	Applicant	Comments
4734	1955	Communications	Pacific Telephone & Telegraph Company	MP 6.24 (prior Mile Post system). Telephone cable crossing.
6142	1962	Communications	Pacific Northwest Bell	MP 307.45. U/G telephone cable.
5225	1964	Communications	Pacific Northwest Bell	MP 6.63 - 6.77 (prior Mile Post system). Telephone cable. Modified later.
11761	1967	Water	Hayden Island, Inc.	MP 308.02. 6" steel. Not shown on City of Portland data - could be abandoned.
11973	1967	Electricity	Portland General Electric	MP 307.69. U/G 11 kV crossing. Amended in Salem Permit Office.
12240	1968	Sewer	Hayden Island, Inc.	MP 6.28 (prior Mile Post system). 8" welded steel pipe.
12259	1971	Communications	Pacific Northwest Bell	Location on attached map is not clear: it is likely at intersection of Hayden Island Drive and Center Avenue.
13509	1970	Water	Hayden Island, Inc.	MP 7.69 (prior Mile Post system). 12" pipe. Replaced - see Permit #30861.
13681	1970	Electricity	Portland General Electric	MP 6.59 - 6.60 (prior Mile Post system). 17kV buried cable and switch/transformer house. Current configuration not as shown on the permit.
14228	1971	Gas	Northwest Natural Gas Company	MP 307.69 - 307.99. 2" and 4" pipe.
15306	1972	Water	City of Portland	MP 307.06. 24" casing for 16" steel main.
15572	1972	Water	City of Portland	MP 307.05. 16" DIP crossing.
16216	1973	Communications	City of Portland	MP 307.48 - 307.70. Fire alarm cable suspended under Oregon Slough Bridge. Not shown for security reasons.
17675	1976	Communications	Pacific Northwest Bell	MP 308.14 - 308.16. Concrete parking area.
18599	1977	Sewer	City of Portland	MP 306.64 - 306.83. 6" DIP forcemain.
19107	1977	Gas	Northwest Natural Gas Company	MP 308.15 - 308.17. 2" steel.
20738	1979	Communications	Pacific Northwest Bell	MP 368.25. U/G cable. Mile Post is incorrect.
25437	1985	Communications	Pacific Northwest Bell	MP 307.45. U/G telephone cable and cable suspended under North Portland Harbor Bridge deck.
27148	1987	Communications	Roger's Cable Systems	MP 307.47 - 307.70. U/G TV cable and suspended cable under North Portland Harbor Bridge deck.
30693	1990	Water	City of Portland	MP 307.33 - 307.51. 16" DIP.
30861	1990	Water	City of Portland	MP 308.06 - 308.16. 12" DIP.
2BM35007	1990	Gas	Northwest Natural Gas Company	MP 307.32 - 307.47. 8" steel line.
2BM35178	1992	Sewer	City of Portland	MP 307.70. 10" PVC forcemain crossing.
2BM35338	1993	Communications	Red Lion Inn	MP 308.00. Record existing telephone cable.
2BM35356	1994	Communications	Columbia Cable of Washington	MP 307.99 - 308.38. 2" conduit with fiber-optic cable across I-5 bridges. Extends onto Washington side. Shown as a submarine crossing at lift span.
2BM35638	1996	Sewer	City of Portland	MP 307.16. 20" and 30" forcemain.

Permit No.	Year Issued	Utility Type	Applicant	Comments
2BM35797	1997	Communications	TCI	MP 307.99 - 308.38. Temporary permit for installing fiber-optic cable on I-5 bridges. Extends onto Washington side.
2BM35800	1997	Communications	All Phase Communications	MP 307.80 - 307.99. U/G fiber-optic cable.
2BM35801	1997	Communications	All Phase Communications	MP307.99 - 308.38. PVC conduits on I-5 bridges for fiber-optic cable. Extends onto Washington side, and includes vault and pull boxes.
2BM35831	1997	Communications	All Phase Communications	MP 307.46 - 307.70. Fiber-optic cable suspended under Oregon Slough Bridge.
2BM35873	1997	Communications	GST Telecom	MP 307.30. U/G fiber-optic cable. Mile Post is incorrect – cable located on Pier 99 Street.
2BM36005	1998	Water	City of Portland	MP 307.45. 8" DIP.
2BM36010	1998	Communications	Electric Lightwave	MP 307.48. O/H fiber-optic line on PP&L poles.
2BM36073	1999	Communications	Paragon Cable	MP 307.46 - 307.47. U/G fiber-optic & TV cable.
2BM36236	2000	Electricity	Portland General Electric	MP 308.00. U/G mainline backbone feeder.
2BM36242	2000	Electricity	Portland General Electric	MP 308.00. 4" & 6" U/G power conduit.
2BM36281	2000	Communications	Hayden Corner	MP 308.00. Replace traffic loop detector - loops not shown on drawings.
2BM36614	2002	Water	Doubletree Hotel	MP 308.00. Connection to ODOT water line. Insufficient information to verify location. Private connections not shown on the drawings.
2BM36829	2003	Communications	Qwest	MP 307.71. U/G 2" service conduit. Service connections not shown on drawings.
2BM37005	2005	Communications	Qwest	MP 307.71. U/G telephone cable.

Franchises and Permits Issued by WSDOT for I-5 Right-of-Way

Permit No.	Year Issued	Utility Type	Applicant	Comments
FRANCHISES				
	1994	Communications	Columbia Cable of Washington	MP 0.00 - 0.17. See ODOT Permit # 2BM35356.
	1997	Communications	All Phase Communications	See ODOT Permit # 2BM35801.
	1997	Communications	TCI	MP 0.00 - 0.23. See ODOT Permit # 2BM35797.
6423	1980	Electricity	Clark County PUD	MP 0.27. Existing 12.5kV O/H crossing. Franchise Agreement (expires 2005).
6423	1980	Electricity	Clark County PUD	MP 0.53. Existing guy wire and neutral wire O/H crossing. Franchise Agreement (expires 2005). No longer there.
6423	1980	Electricity	Clark County PUD	MP 0.65. Existing 12.5kV O/H crossing. Franchise Agreement (expires 2005).
6423	1980	Electricity	Clark County PUD	MP 0.93. Existing 12.5kV O/H crossing. Franchise Agreement (expires 2005).
6423	1980	Electricity	Clark County PUD	MP 1.23. Existing 2" to 6" conduits without cable. Franchise Agreement (expires 2005).
6423	1980	Electricity	Clark County PUD	MP 1.82. Existing 12.5kV O/H crossing. Franchise Agreement (expires 2005).
6423	1980	Electricity	Clark County PUD	MP 2.02. Existing 69kV O/H crossing. Franchise Agreement (expires 2005).
6644	1984	Communications	Pacific Northwest Bell Telephone Co.	MP 0.54. O/H telephone cable crossing. Franchise Agreement (expires 2009). Crossing no longer exists.
6644	1984	Communications	Pacific Northwest Bell Telephone Co.	MP 0.84. O/H telephone cable crossing. Franchise Agreement (expires 2009). Crossing is on bridge.
6644	1984	Communications	Pacific Northwest Bell Telephone Co.	MP 1.55. U/G telephone cable crossing encased in a 30" steel pipe. Franchise Agreement (expires 2009).
6644	1984	Communications	Pacific Northwest Bell Telephone Co.	MP 1.56. U/G telephone cable crossing. Franchise Agreement (expires 2009).
6644	1984	Communications	Pacific Northwest Bell Telephone Co.	MP 1.98. O/H telephone cable crossing. Franchise Agreement (expires 2009). Crossing is actually at 33 rd (MP 2.02).
6644	1984	Communications	Pacific Northwest Bell Telephone Co.	MP 0.29 - 0.32. U/G telephone cable crossing. Franchise Agreement (expires 2009).
6644	1991	Communications	Pacific Northwest Bell Telephone Co.	MP 1.55 - 1.62. U/G telephone cable crossing: within an existing duct. Franchise Agreement (expires 2009).
6644	1991	Communications	Pacific Northwest Bell Telephone Co.	MP 1.56 - 1.62. U/G telephone cable crossing: within existing ducts. Franchise Agreement (expires 2009).
40006	1985	Gas	Northwest Natural Gas Company	MP 0.25. 6" steel. Franchise Agreement (expires 2010).
40006	1985	Gas	Northwest Natural Gas Company	MP 1.28 - 1.29. 4" steel. Franchise Agreement (expires 2010).
40025	1987	Water	City of Vancouver	MP 0.25. 6" DIP. Franchise Agreement (expires 2012).
40025	1987	Water	City of Vancouver	MP 0.54 - 0.56. 12" DIP. Franchise Agreement (expires 2012).
40025	1987	Water	City of Vancouver	MP 0.58 - 0.60. 12" DIP. Franchise Agreement (expires 2012).
40025	1987	Water	City of Vancouver	MP 1.00 - 1.04. 12" DIP. Franchise Agreement (expires 2012).

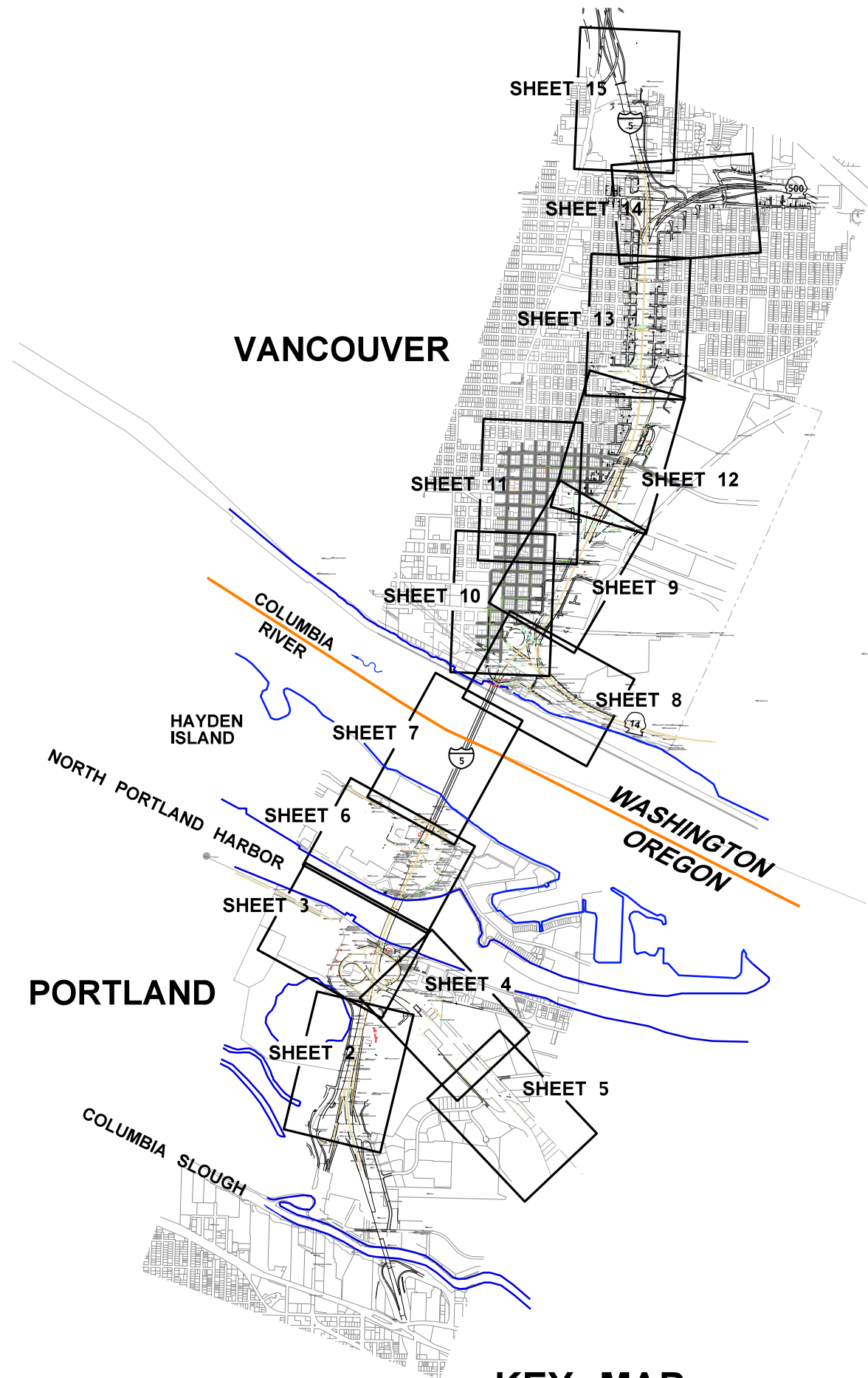
Permit No.	Year Issued	Utility Type	Applicant	Comments
40025	1987	Water	City of Vancouver	MP 1.03 - 1.08. 8" pipe. Franchise Agreement (expires 2012). Partly abandoned.
40025	1987	Water	City of Vancouver	MP 1.03 - 1.04. 6" pipe. Franchise Agreement (expires 2012).
40025	1987	Water	City of Vancouver	MP 2.33 - 2.37. 8" DIP. Franchise Agreement (expires 2012).
40025	1987	Water	City of Vancouver	MP 2.36 - 2.38. 8" DIP with a 2" galvanized pipe. Franchise Agreement (expires 2012).
40025	1987	Water	City of Vancouver	MP 1.30. 20" DIP crossing not previously described. Franchise Agreement (expires 2012).
40025	1987	Water	City of Vancouver	MP 1.68. 6" pipe crossing in 36" culvert not previously described. Franchise Agreement (expires 2012). Abandoned.
40025	1987	Water	City of Vancouver	MP 1.83. 12" DIP crossing in 42" culvert not previously described. Franchise Agreement (expires 2012).
40025	1987	Water	City of Vancouver	MP 1.97. 10" DIP crossing in 42" culvert not previously described. Franchise Agreement (expires 2012).
40058	1988	Sewer	City of Vancouver	MP 0.26. Existing 8" CSP. Franchise Agreement (expires 2013).
40058	1988	Sewer	City of Vancouver	MP 0.43 - 0.44. Existing 8" CSP. Franchise Agreement (expires 2013).
40058	1988	Sewer	City of Vancouver	MP 0.44 - 0.45. Existing 8" CSP. Franchise Agreement (expires 2013).
40058	1988	Sewer	City of Vancouver	MP 0.56 - 0.58. Existing 33" pipe. Franchise Agreement (expires 2013).
40058	1988	Sewer	City of Vancouver	MP 1.03. Existing 8" pipe. Franchise Agreement (expires 2013).
40058	1988	Sewer	City of Vancouver	MP 1.08. Existing 8" pipe. Franchise Agreement (expires 2013).
40058	1988	Sewer	City of Vancouver	MP 1.19 - 1.26. Existing 10" pipe. Franchise Agreement (expires 2013).
40058	1988	Sewer	City of Vancouver	MP 1.30 - 1.37. Existing 8" pipe. Franchise Agreement (expires 2013). Abandoned.
40058	1988	Sewer	City of Vancouver	MP 1.68. Existing 14" pipe. Franchise Agreement (expires 2013).
40058	1988	Sewer	City of Vancouver	MP 1.68. Existing 12" pipe. Franchise Agreement (expires 2013).
40058	1988	Sewer	City of Vancouver	MP 2.25 - 2.29. Existing 8" pipe. Franchise Agreement (expires 2013).
40058	1988	Sewer	City of Vancouver	MP 2.29 - 2.34. Existing 8" pipe. Franchise Agreement (expires 2013).
40058	1988	Sewer	City of Vancouver	MP 2.34 - 2.35. Existing 27" pipe. Franchise Agreement (expires 2013).
40058	1988	Sewer	City of Vancouver	MP 2.31 - 2.37. Existing 8" pipe. Franchise Agreement (expires 2013).
40058	1988	Sewer	City of Vancouver	MP 2.41 - 2.44. Existing 12" pipe. Franchise Agreement (expires 2013).
40118	1994	Communications	Columbia Cable of Washington	MP 0.00 - 0.26. 2" duct with fiber-optic cable on I-5 bridges. Franchise Agreement (expires 2019).
40118	1998	Communications	TCI	MP 0.00 - 0.26. 2" duct with fiber-optic cable. High level crossing of bridge lift span. Franchise Agreement (expires 2019).

Permit No.	Year Issued	Utility Type	Applicant	Comments
40118	1998	Communications	TCI	MP 2.02. O/H fiber-optic cable crossing. Franchise Agreement (expires 2019).
40151	1997	Communications	Electric Lightwave	MP 0.26 - 0.27. O/H fiber-optic cable crossing. Franchise Agreement (expires 2022).
40151	1997	Communications	Electric Lightwave	MP 2.02. O/H fiber-optic cable crossing. Franchise Agreement (expires 2022).
40161	1998	Communications	GTE	MP 1.82. O/H fiber-optic cable crossing. Franchise Agreement (expires 2023).
PERMITS				
8828	1983	Communications	Cox Cable	MP 0.94. O/H CATV cable crossing. See #11072.
8842	1984	Communications	Cox Cable	MP 1.84. Two CATV cables within 29th Street structure.
8868	1983	Electricity	Clark County PUD	MP 0.66 - 0.69. 4" PVC duct with 12.5kV cable.
9749	1984	Communications	City of Vancouver	MP 1.03 - 1.05. U/G cable in PVC duct.
9278	1985	Communications	Cox Cable	MP 0.79 - 0.84. U/G CATV cable parallel to I-5 in 2" PVC duct.
11013	1994	Communications	Clark Public Utilities	MP 0.94 - 0.95. O/H fiber-optics cable lashed to neutral wire authorized under Franchise #6423.
11072	1995	Communications	Columbia Cable of Washington	MP 0.94. O/H CATV cable crossing.
11466	1996	Communications	TCI	MP 1.27 - 1.28. 2 - 2" PVC ducts. One is empty and one has a CATV cable.
U1196	2001	Communications	City of Vancouver	MP 1.03 - 1.05. U/G 3" duct with fiber-optic cable.
U1271	2002	Communications	Clark County Dept. of Information Technology	MP 0.85. 3 - 1.25" fiber-optic cable ducts.
U1315	2002	Communications	Clark Public Utilities	MP 0.26 - 0.28. O/H fiber-optic cable crossing.
U1444	2004	Communications	City of Vancouver	MP 1.58. Fiber-optic cables.

This page intentionally left blank.

APPENDIX B

Composite Utility Plan



KEY MAP

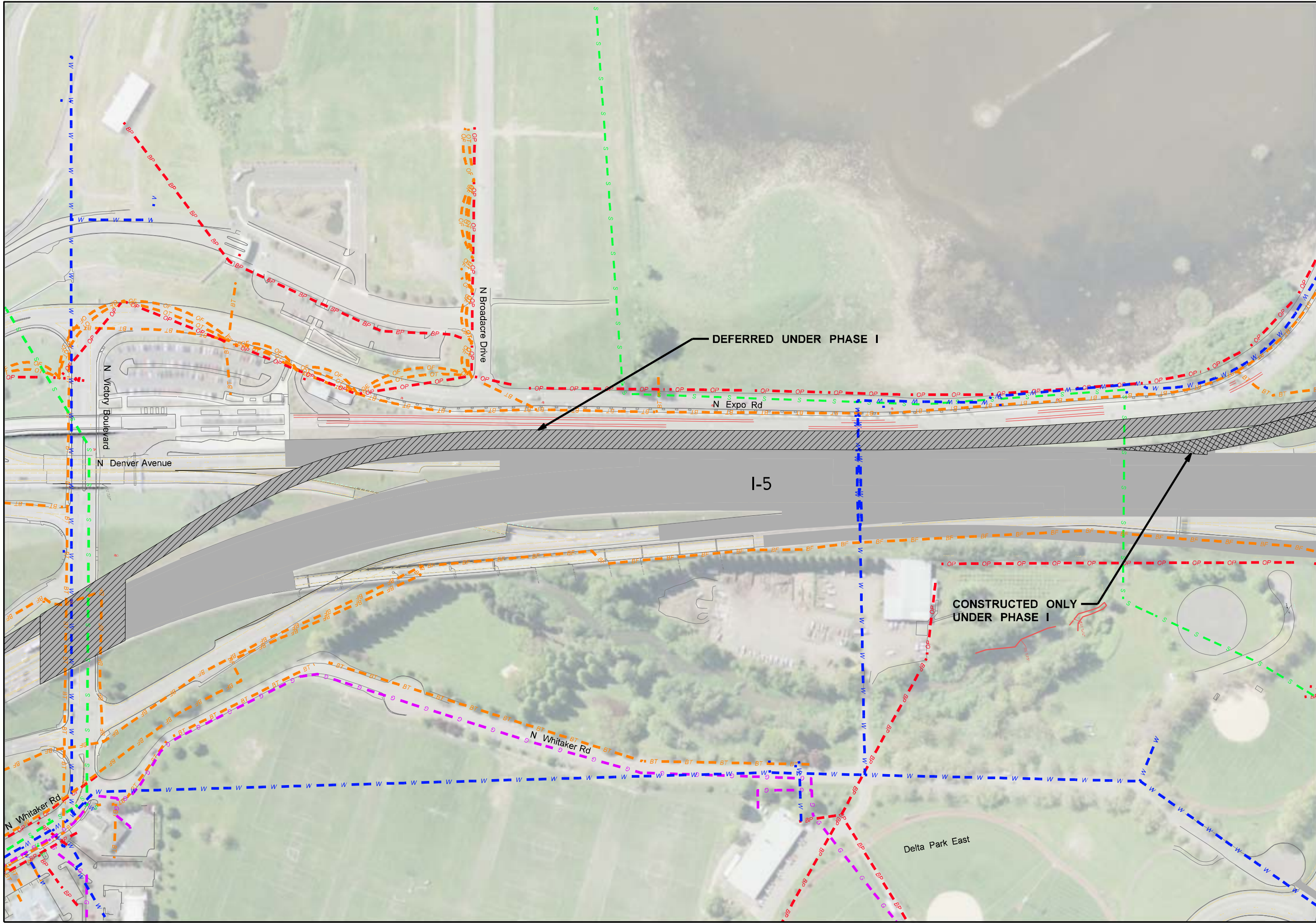
NOTES:

1. Utilities Presented On These Drawings Are Based On Information Provided By Various Agencies And Utility Sources. Poles For Overhead Utilities Were Adjusted Where Appropriate To Match Pole Locations Shown Within The Limits Of The Detailed Base Map.
2. The Utilities Shown Have Not Been Field Located. There Is No Guarantee That The Utilities Shown Comprise All Utilities In The Area, Either Abandoned Or In Service, Or That The Location Of The Utilities Shown Is Accurate.
3. The Ortho-Photo, Which Was Provided By The Washington Department Of Transportation, Is Based On Aerial Photography Flown In April 2005.

LEGEND

- BTU -	BTU	BTU	Underground Cable Television
- OTV -	OTV	OTV	Above Ground Cable Television
- G -	G	G	Northwest Natural Gas Line
- BP -	BP	BP	Underground Electric
- OP -	OP	OP	Above Ground Electric
- BF -	BF	BF	Underground Fiber Optic
- OF -	OF	OF	Above Ground Fiber Optic
- BT -	BT	BT	Underground Telephone Cable
- OT -	OT	OT	Above Ground Telephone Cable
- W -	W	W	Underground Water Line
- S -	S	S	Sanitary Sewer Line
			Proposed Project Footprint

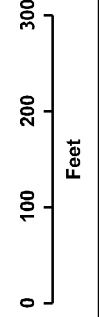
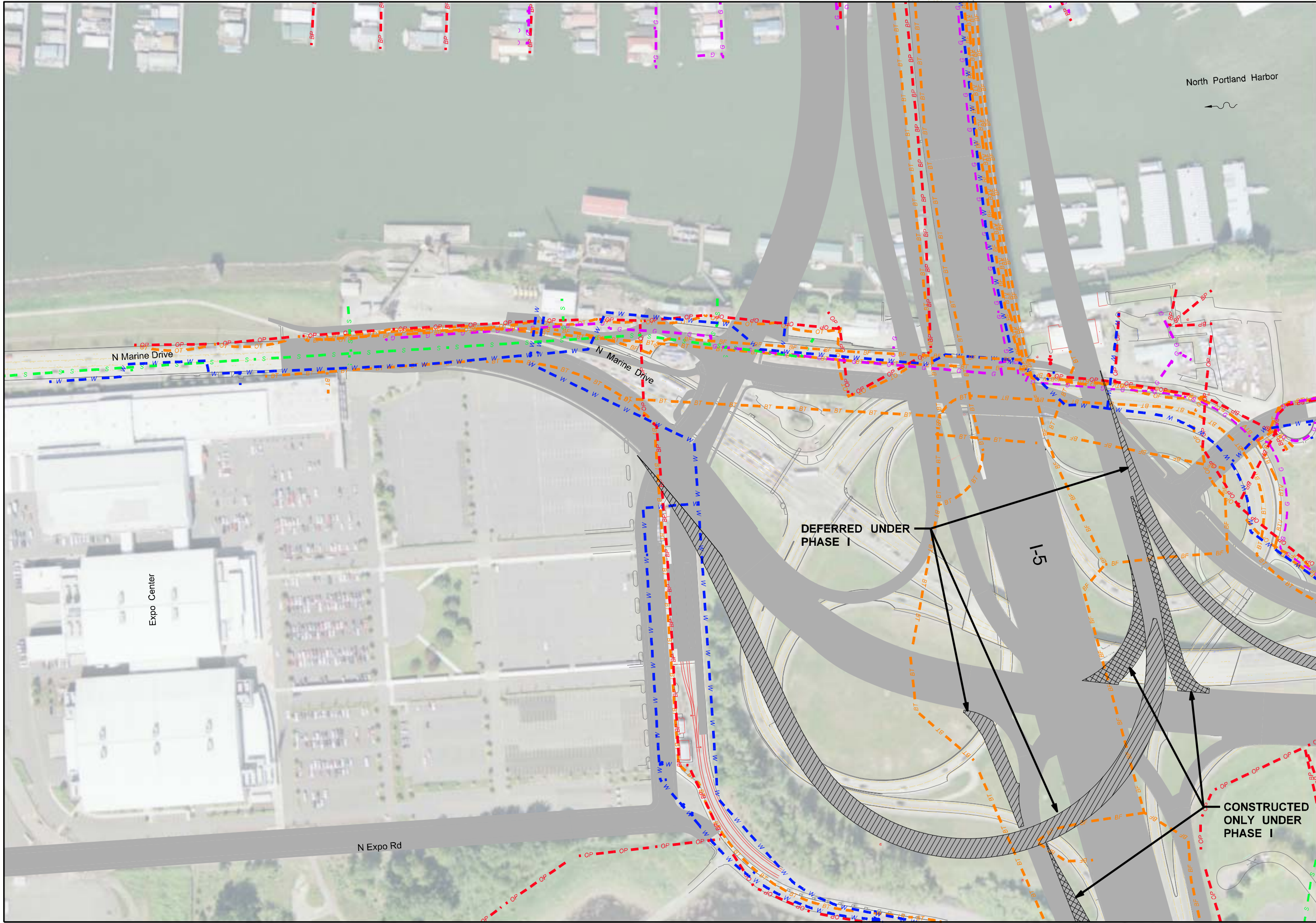




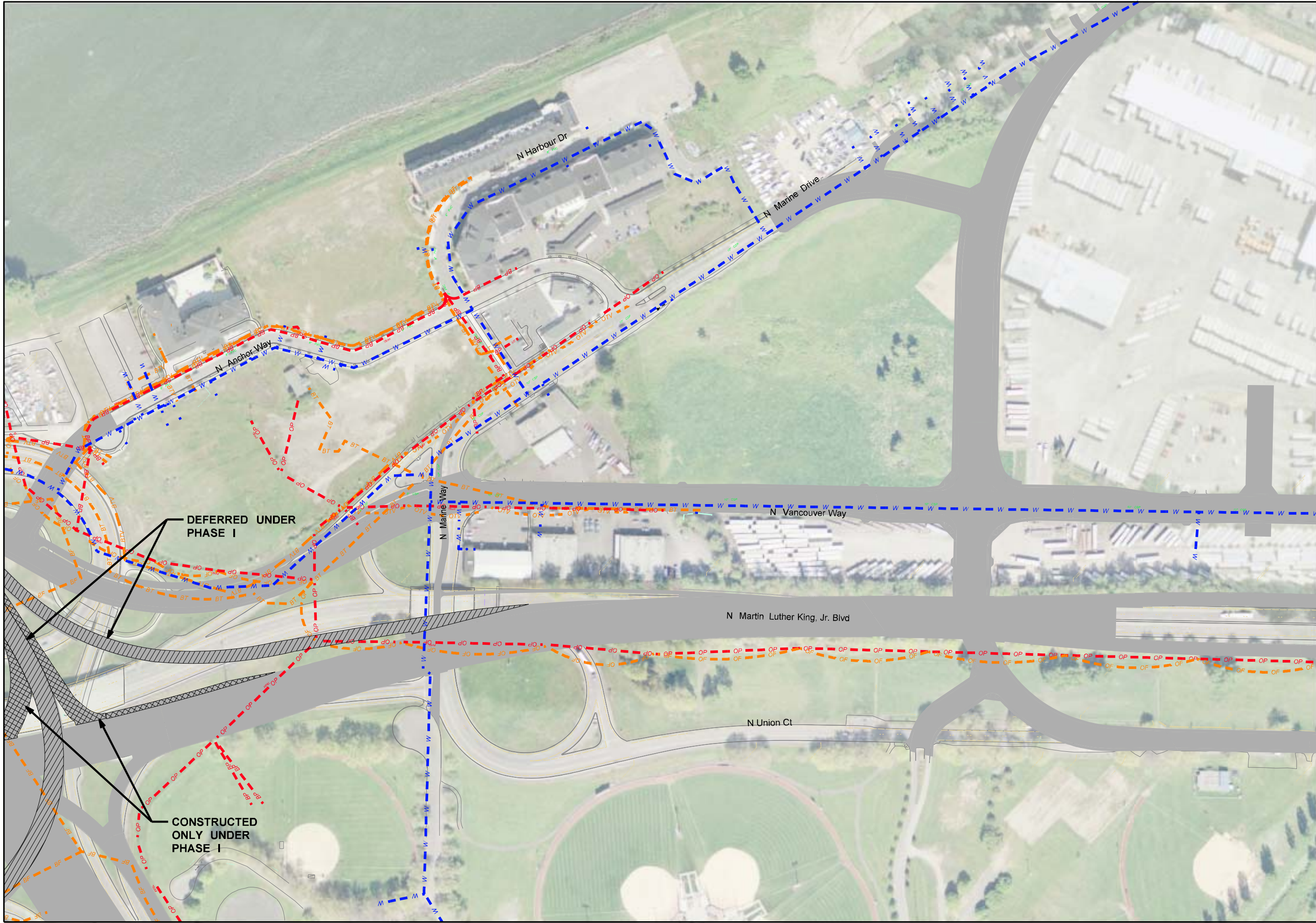
NOTE:
See Sheet 1 For Key Map, Notes and Legend

c:\aawork\paw_krcroburke\ndms0818\CR_C_P_S_EU_Composite.dgn

12/23/2010 11:32:48 AM

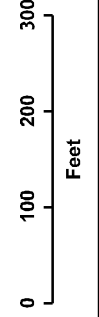


NOTE:
See Sheet 1 For Key Map, Notes and Legend



DEFERRED UNDER PHASE I

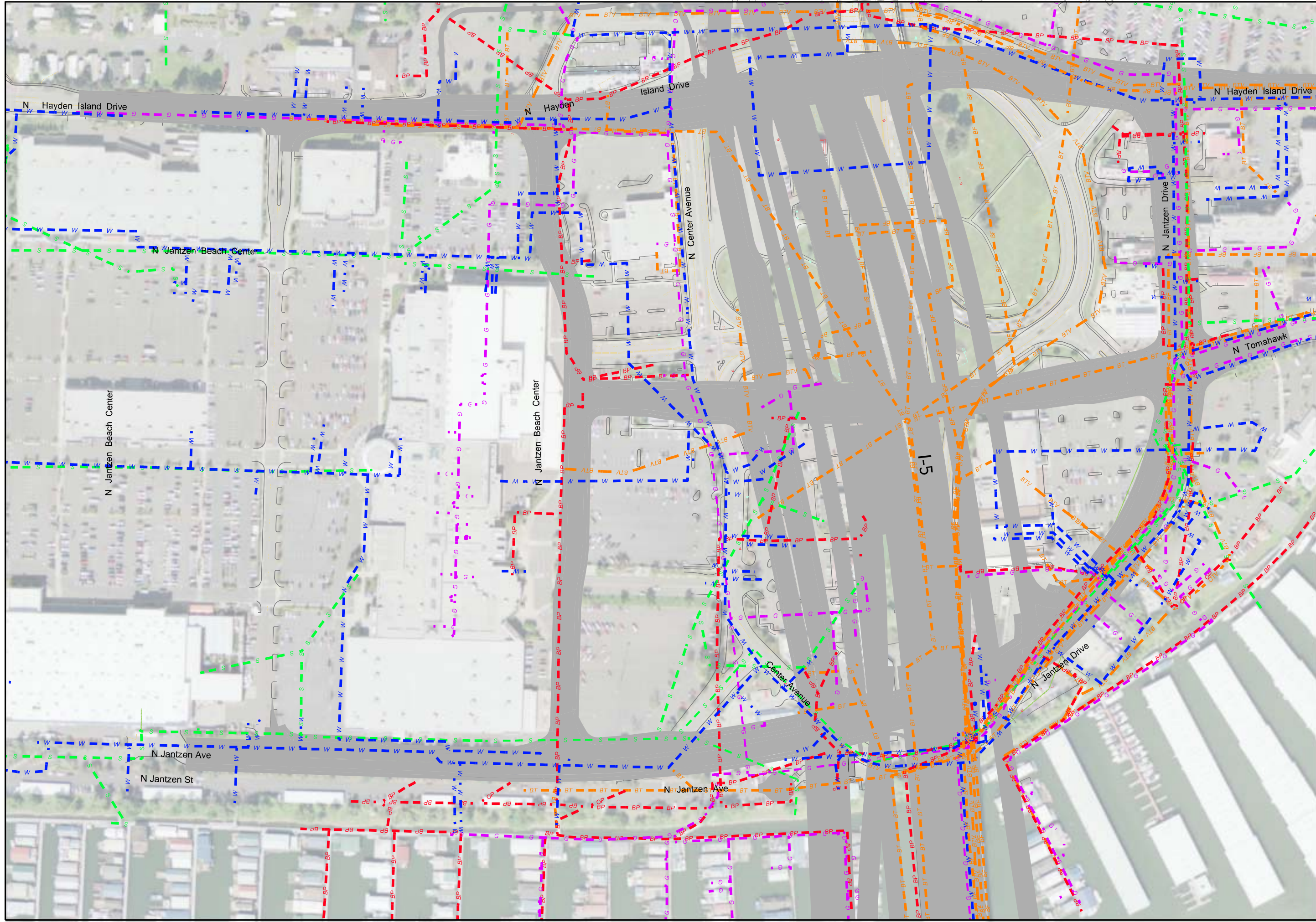
CONSTRUCTED ONLY UNDER PHASE I





0 100 200 300
Feet

NOTE:
See Sheet 1 For Key Map, Notes and Legend



NOTE:
See Sheet 1 For Key Map, Notes and Legend

Composite Utility Plans (Sheet 6 of 15)

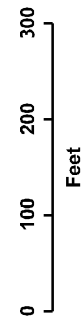
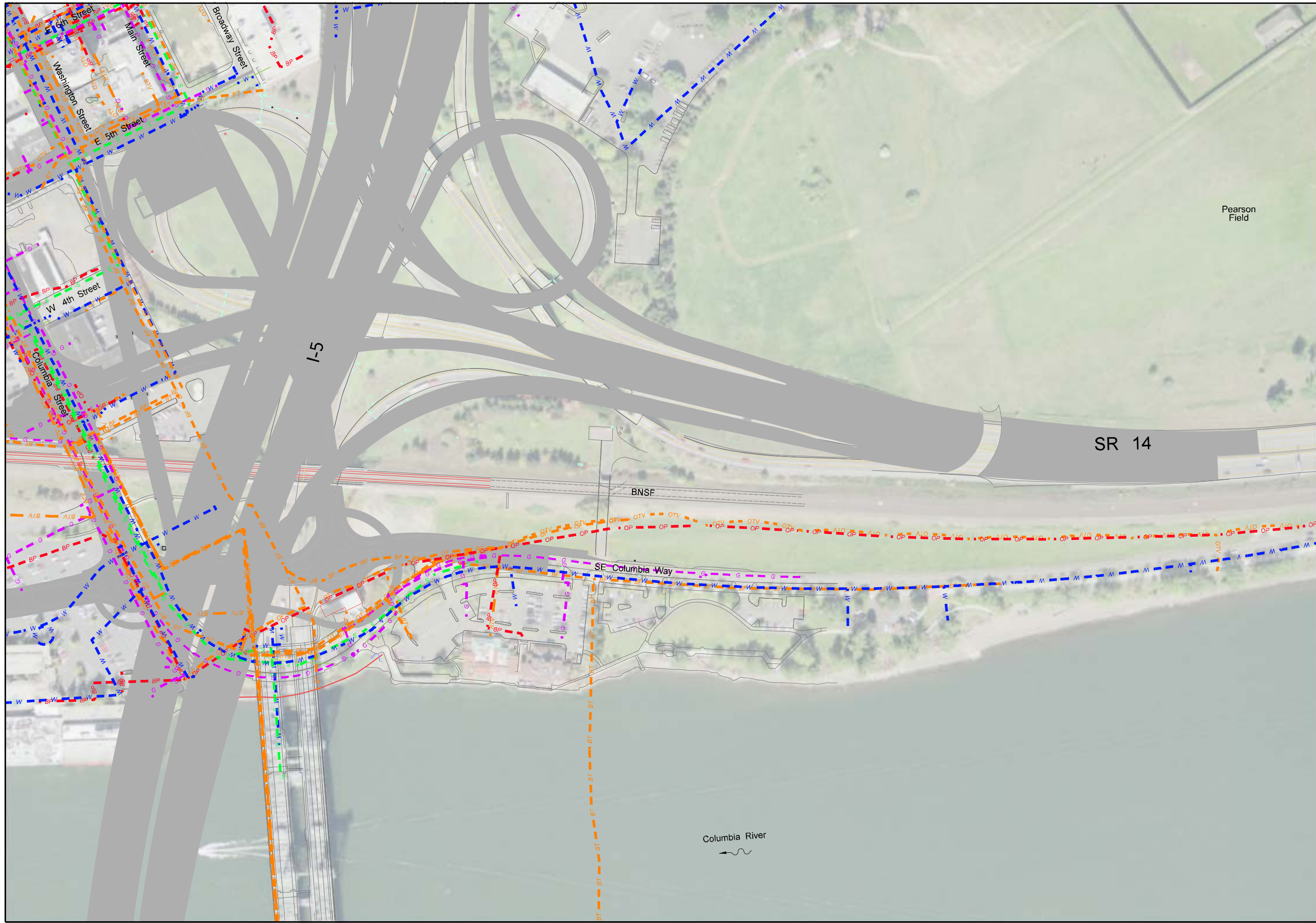


0 100 200 300
Feet

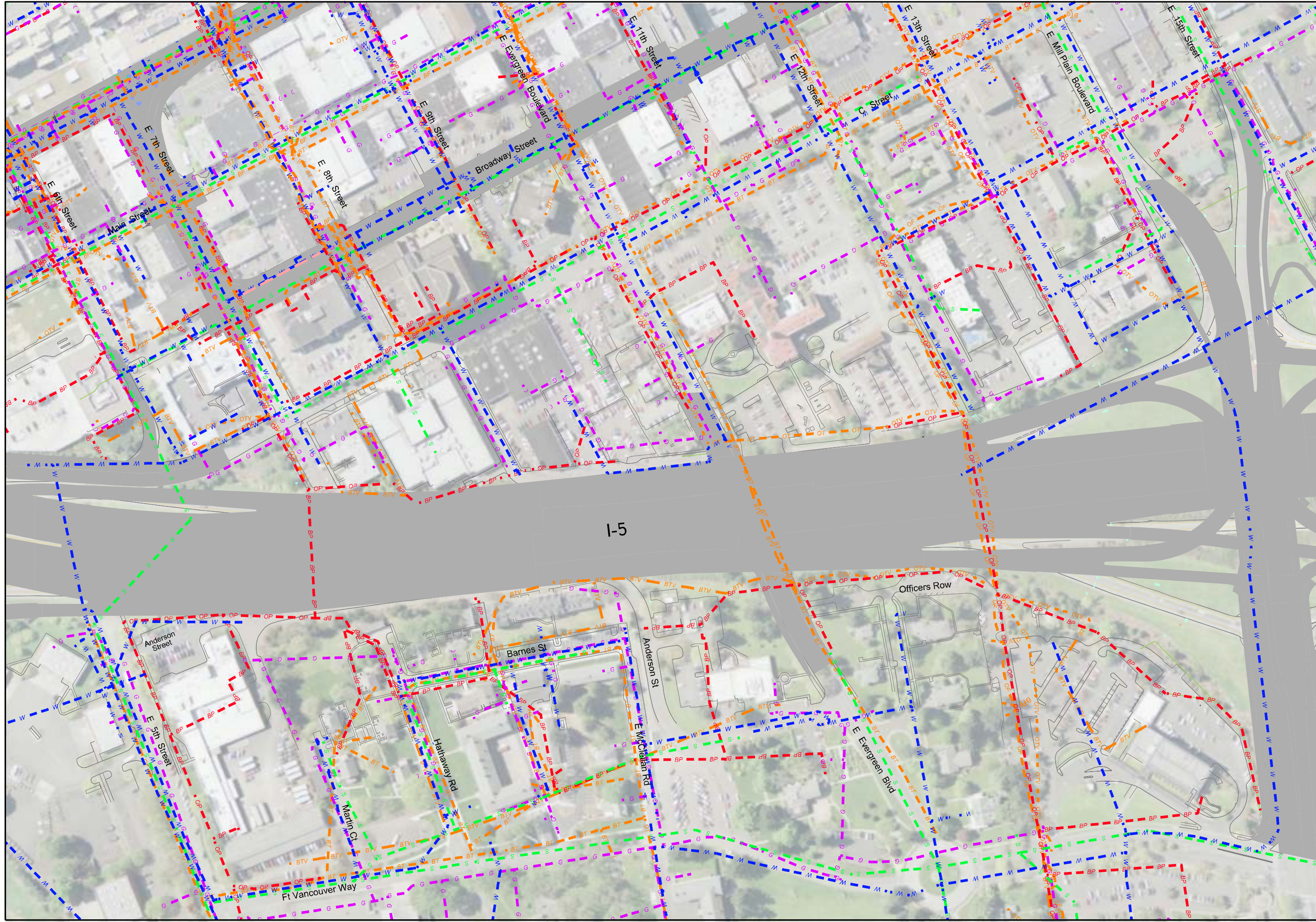
NOTE:
See Sheet 1 For Key Map, Notes and Legend

c:\work\kpw_work\acroburke\ndms0818\GRC_PS_EU_Composite.dgn

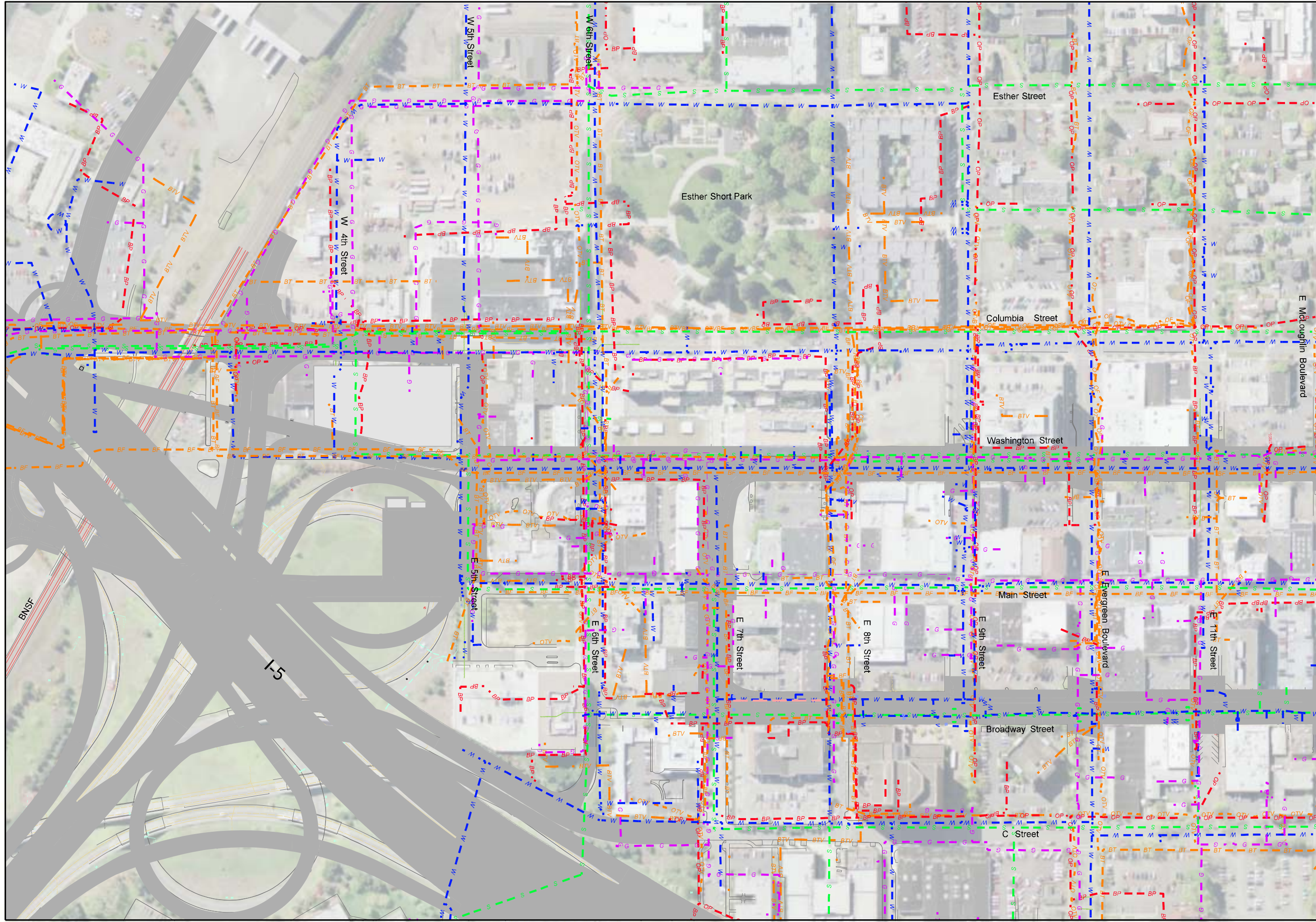
12/22/2010 10:25:56 AM



NOTE:
See Sheet 1 For Key Map, Notes and Legend



NOTE:
See Sheet 1 For Key Map, Notes and Legend

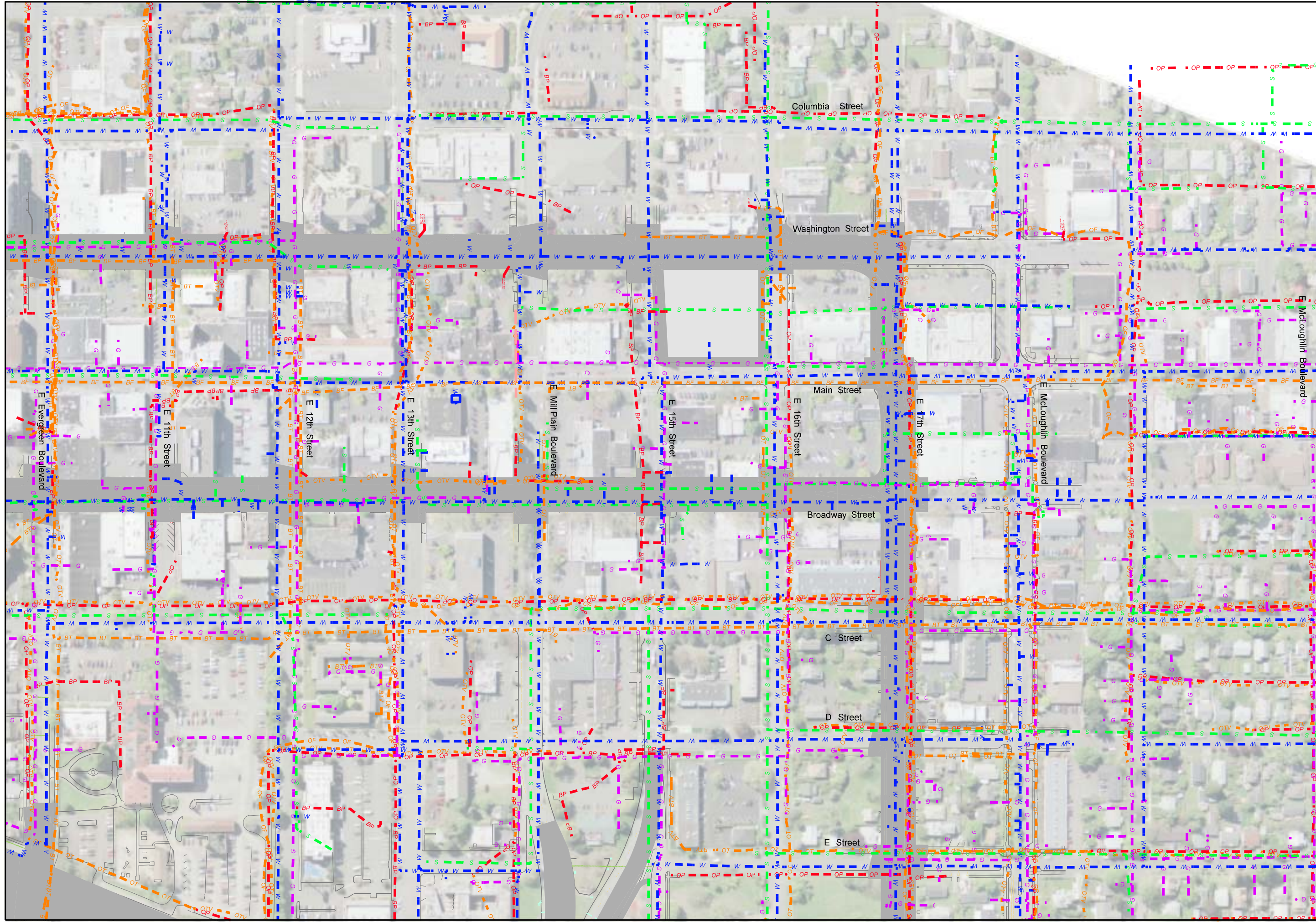


0 100 200 300
Feet

NOTE:
See Sheet 1 For Key Map, Notes and Legend

Composite Utility Plans (Sheet 10 of 15)





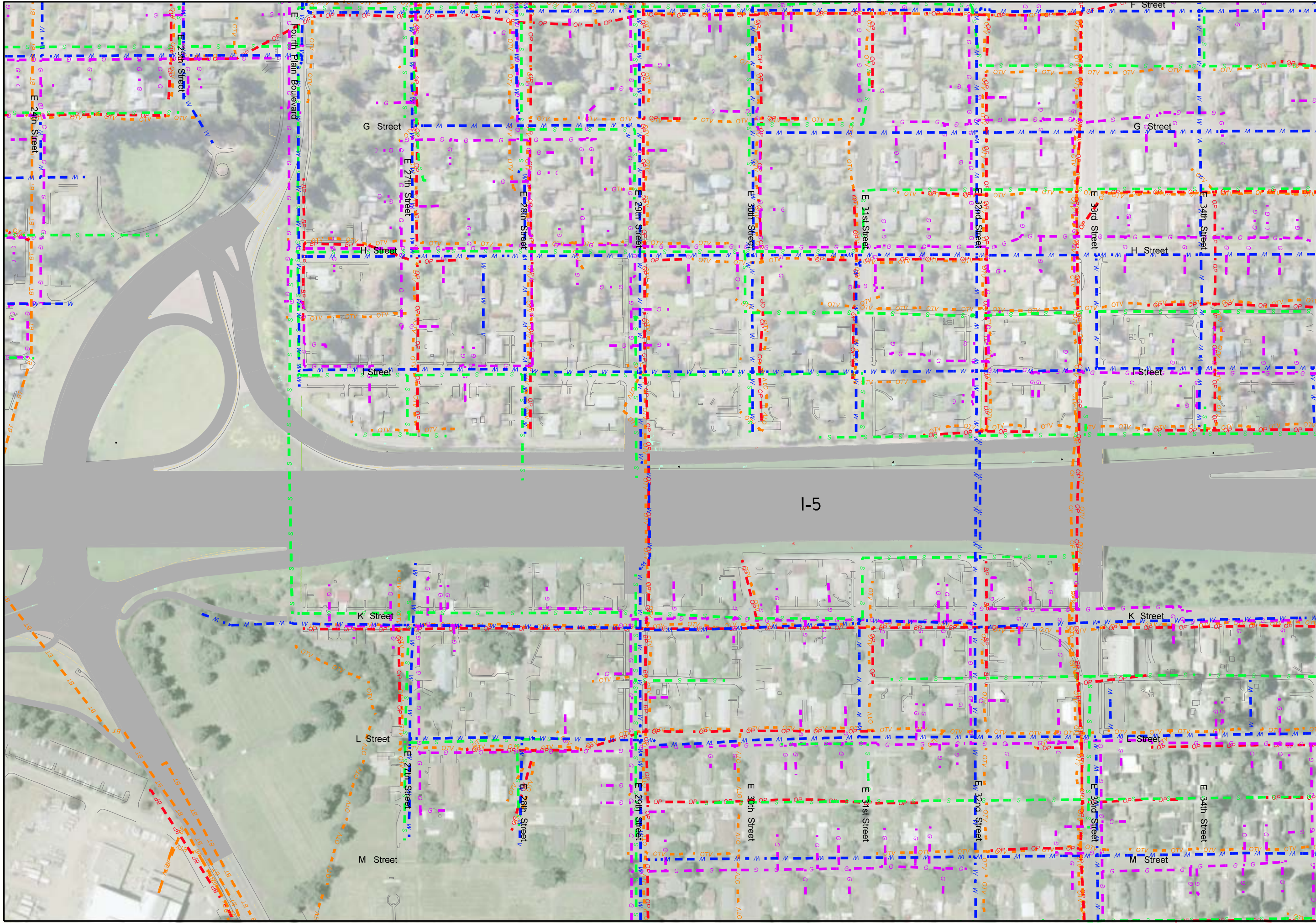
NOTE:
See Sheet 1 For Key Map, Notes and Legend



0 100 200 300
Feet

NOTE:
See Sheet 1 For Key Map, Notes and Legend

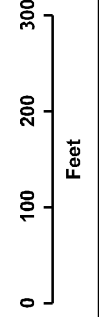
c:\vaowork\pwwork\acrobunke\ndms08\BNGRC_PS_EU_Composite.dgn



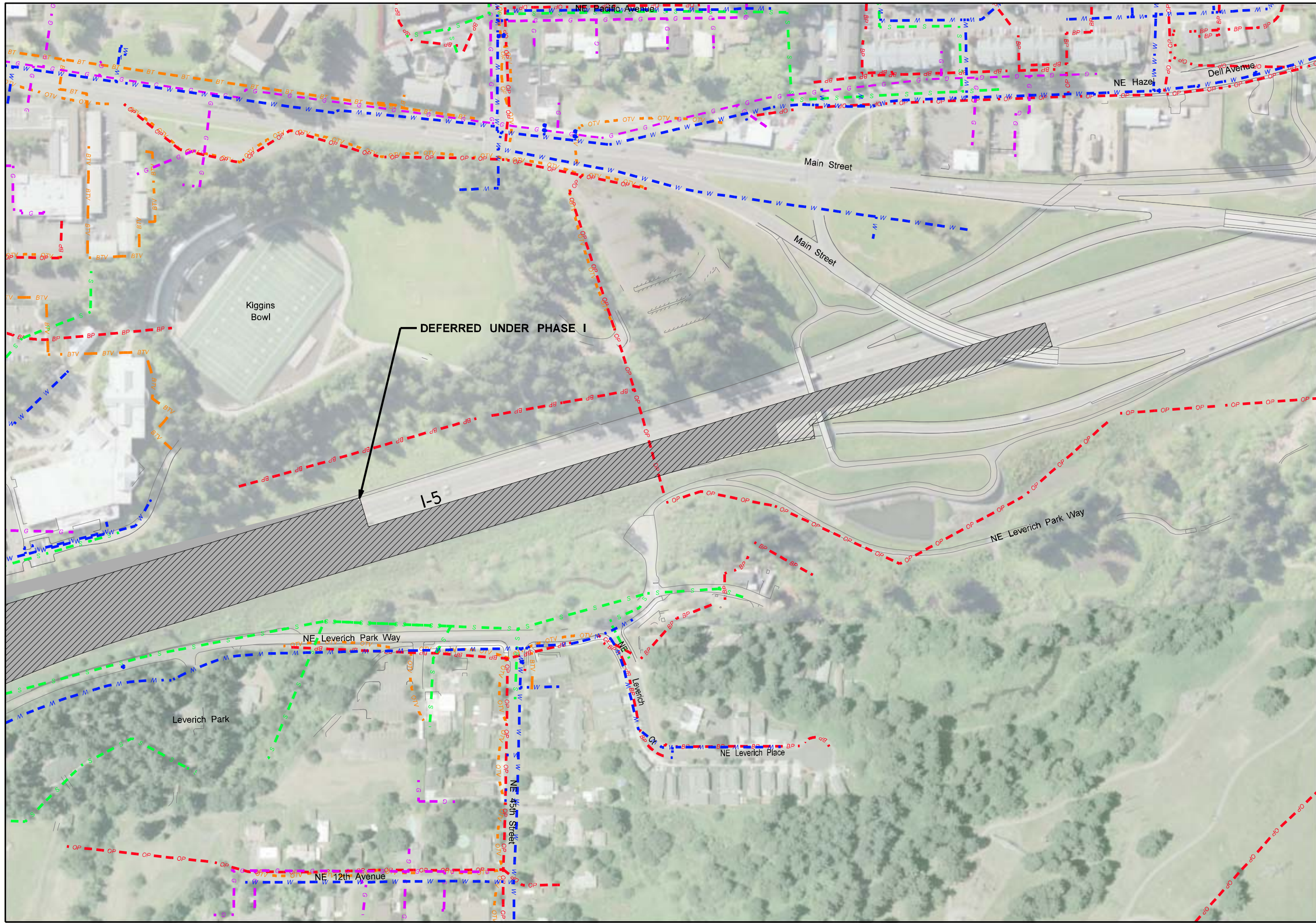
NOTE:
See Sheet 1 For Key Map, Notes and Legend



DEFERRED UNDER PHASE I



NOTE:
See Sheet 1 For Key Map, Notes and Legend



NOTE:
See Sheet 1 For Key Map, Notes and Legend



