



**Washington State
Department of Transportation**
Paula J. Hammond, P.E.
Secretary of Transportation

Southwest Region
11018 Northeast 51st Circle
P.O. Box 1709
Vancouver, WA 98668-1709
360-905-2000 / Fax 360-905-2222
TTY: 1-800-833-6388
www.wsdot.wa.gov

January 27, 2011

American Construction Co, Inc.
1501 Taylor Way
Tacoma, WA 98421-4100

Contract 8078, I-5, Columbia River Bridge
Temporary Pile Test Program
WA 0.3 to OR MP 308.0
State Project
Serial Letter No. 7

RE: Response to Request for Information No. 2

Gentlemen:

This letter is in response to your Request for Information No. 2 received January 27, 2011, which asked the following questions:

- What is the required tolerance for these temporary test pile? Do these piles have to be placed per Section 6-05.3(11)A?
- If these piles have to be accurately located, we will require WSDOT to provide additional survey information such as a couple more survey points (with coordinates) by the river bank.

The tolerance of the as-built locations after piles have been driven is ± 0.02 feet as shown in the contract special provisions. We are not as concerned that the location of piles are driven at the exact coordinates shown in the plans, although they should be close, as we are concerned with accurate as-built locations.

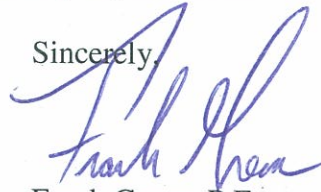
Section 6-05.3(11)A of the Standard Specifications does not pertain to the tolerance of the temporary test piles.

I have attached the record of survey for the Washington side Project Survey Control. This includes descriptions, coordinates, scale factors, datum, and mapped positions of all CRC Project Control in Washington.

American Construction Co, Inc.
January 27, 2011
Page 2

If there are any questions, please contact this office at (360) 816-2208.

Sincerely,



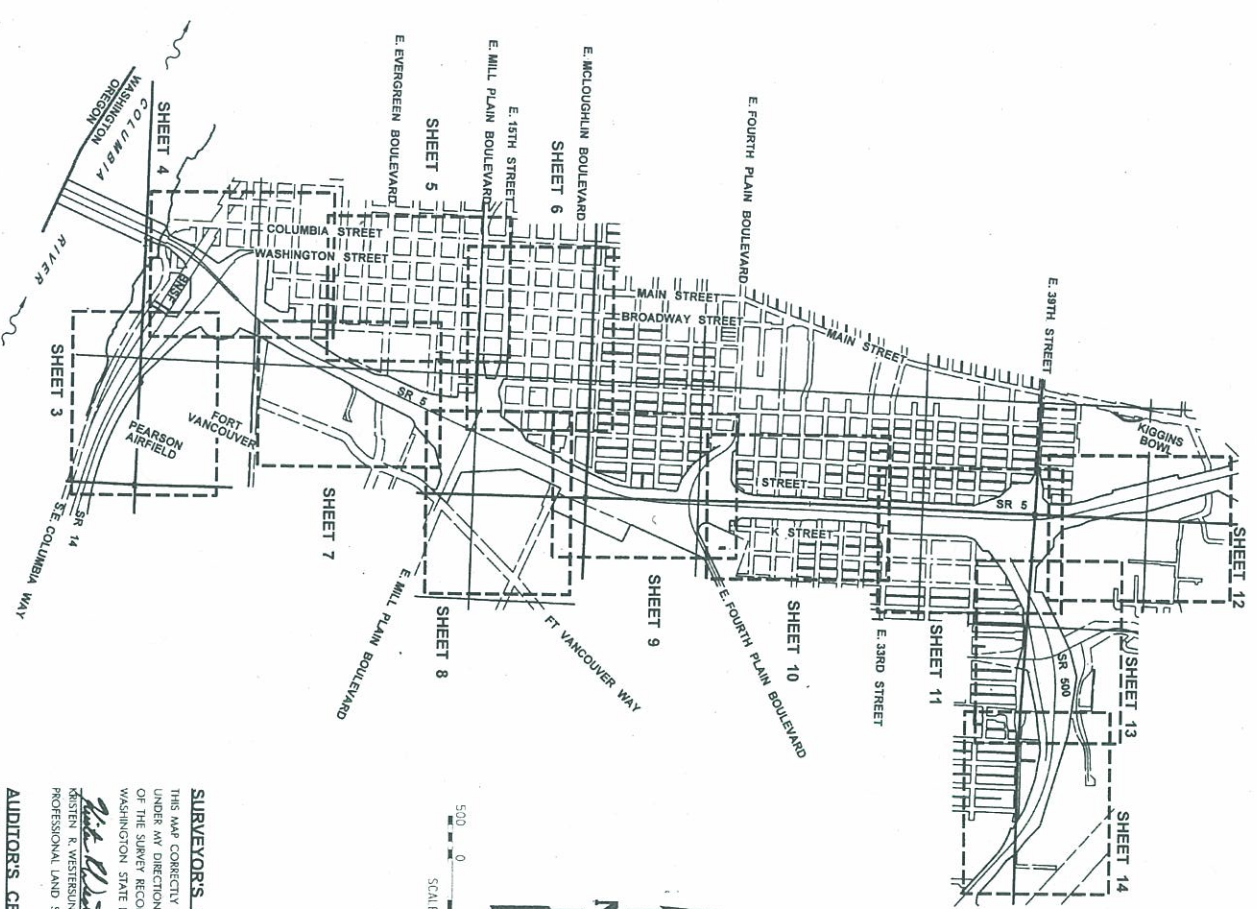
Frank Green, P.E.
CRC Structures Engineering Manager

KAD:np
Attachment

cc: Document Control
M. Degenhart
N. Peppers

SURVEY CONTROL DRAWING

LOCATED IN THE
 S 1/2 OF THE SW 1/4 AND SW 1/4 OF THE SE 1/4 OF SECTION 14;
 THE E 1/2 OF THE SE 1/4 OF SECTION 15,
 THE SW 1/4 AND THE E 1/2 OF THE NE 1/4 AND E 1/2 OF THE SE 1/4 OF SEC 22;
 THE W 1/2 OF THE NW 1/4 AND W 1/2 OF THE SW 1/4 OF SECTION 23;
 THE NW 1/4 OF THE NW 1/4 AND THE W 1/2 OF THE SW 1/4 OF SECTION 26;
 THE E 1/2 OF THE SW 1/4, THE E 1/2 OF THE NW 1/4
 AND E 1/2 OF SECTION 27;
 THE AMOS SHORT DLC 51 AND THE VANCOUVER MILITARY RESERVATION
 T 2 N, R 1 E, W.M.
 CITY OF VANCOUVER, CLARK COUNTY, WASHINGTON
 JULY, 2009
 SHEET 1 OF 14



SHEET INDEX:

- SHEET 1 SHEET LAYOUT, SURVEYOR'S CERTIFICATE, AUDITOR'S CERTIFICATE, SHEET INDEX
- SHEET 2 CONTROL LAYOUT, NARRATIVE AND BENCHMARK LIST
- SHEETS 3 - 14 PLAN SHEETS

SURVEYOR'S CERTIFICATE

THIS MAP CORRECTLY REPRESENTS A SURVEY MADE BY ME OR UNDER MY DIRECTION, IN CONFORMANCE WITH REQUIREMENTS OF THE SURVEY RECORDING ACT, AT THE REQUEST OF THE WASHINGTON STATE DEPARTMENT OF TRANSPORTATION.

KRISTEN R. WESTERSUND
 PROFESSIONAL LAND SURVEYOR, LS #3152



AUDITOR'S CERTIFICATE

FILED FOR RECORD THIS 22ND DAY OF July, 2009 AT 2:11 P.M. IN BOOK 60 OF SURVEYS AT PAGE 36 AT THE REQUEST OF DAVID EVANS AND ASSOCIATES, INC.

County Auditor: David Evans
 Date: 7/23/09

DAVID EVANS AND ASSOCIATES, INC.
 2700 Southview Road Parkway
 Phone: 509.223.8653

Washington State Department of Transportation

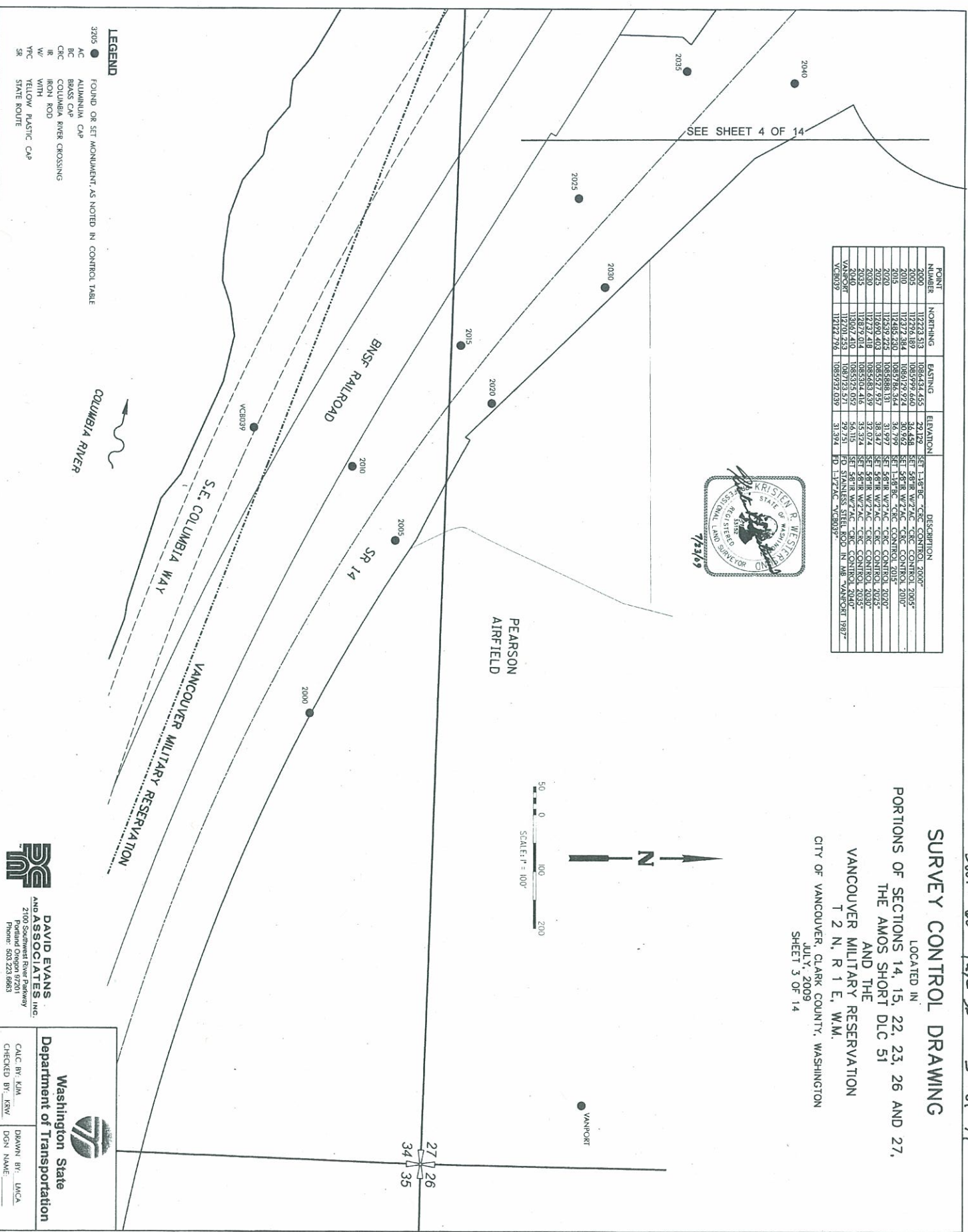
CALC BY: KJM
 CHECKED BY: KRW
 DRAWN BY: LKCA
 DON NAME: _____

POINT NUMBER	NORTHING	EASTING	ELEVATION	DESCRIPTION
2000	112723.513	1085434.455	29.129	SET 1.58" BC - CONC CONTROL 2000*
2005	112926.189	1085999.460	34.484	SET 1.58" BC - CONC CONTROL 2005*
2010	112727.384	1085729.924	30.992	SET 1.58" R WZ AC - CONC CONTROL 2010*
2015	112529.225	1085888.191	31.997	SET 1.58" R WZ AC - CONC CONTROL 2015*
2020	112690.403	1085577.957	38.347	SET 1.58" R WZ AC - CONC CONTROL 2020*
2025	112737.418	1085683.639	32.074	SET 1.58" R WZ AC - CONC CONTROL 2025*
2030	112877.014	1085514.416	32.524	SET 1.58" R WZ AC - CONC CONTROL 2030*
2035	112701.253	1085715.971	29.751	FO STAINLESS STEEL ROD IN CONC VANPOSET 1987
VANPOSET	112724.796	1085937.039	31.394	FO 1.57" AC - VANPOSET



SURVEY CONTROL DRAWING

LOCATED IN
 PORTIONS OF SECTIONS 14, 15, 22, 23, 26 AND 27,
 THE AMOS SHORT DLC 51
 AND THE
 VANCOUVER MILITARY RESERVATION
 T 2 N., R 1 E., W.M.
 CITY OF VANCOUVER, CLARK COUNTY, WASHINGTON
 JULY, 2009
 SHEET 3 OF 14



LEGEND

3205 ●	FOUND OR SET MONUMENT, AS NOTED IN CONTROL TABLE
AC	ALUMINUM CAP
BC	BRASS CAP
CRC	COLUMBIA RIVER CROSSING
IR	IRON ROD
WZ	WITH YELLOW PLASTIC CAP
SR	STATE ROUTE

DAVID EVANS AND ASSOCIATES, INC.
 27100 Southwest River Parkway
 Portland, Oregon 97201
 Phone: 503.223.8683

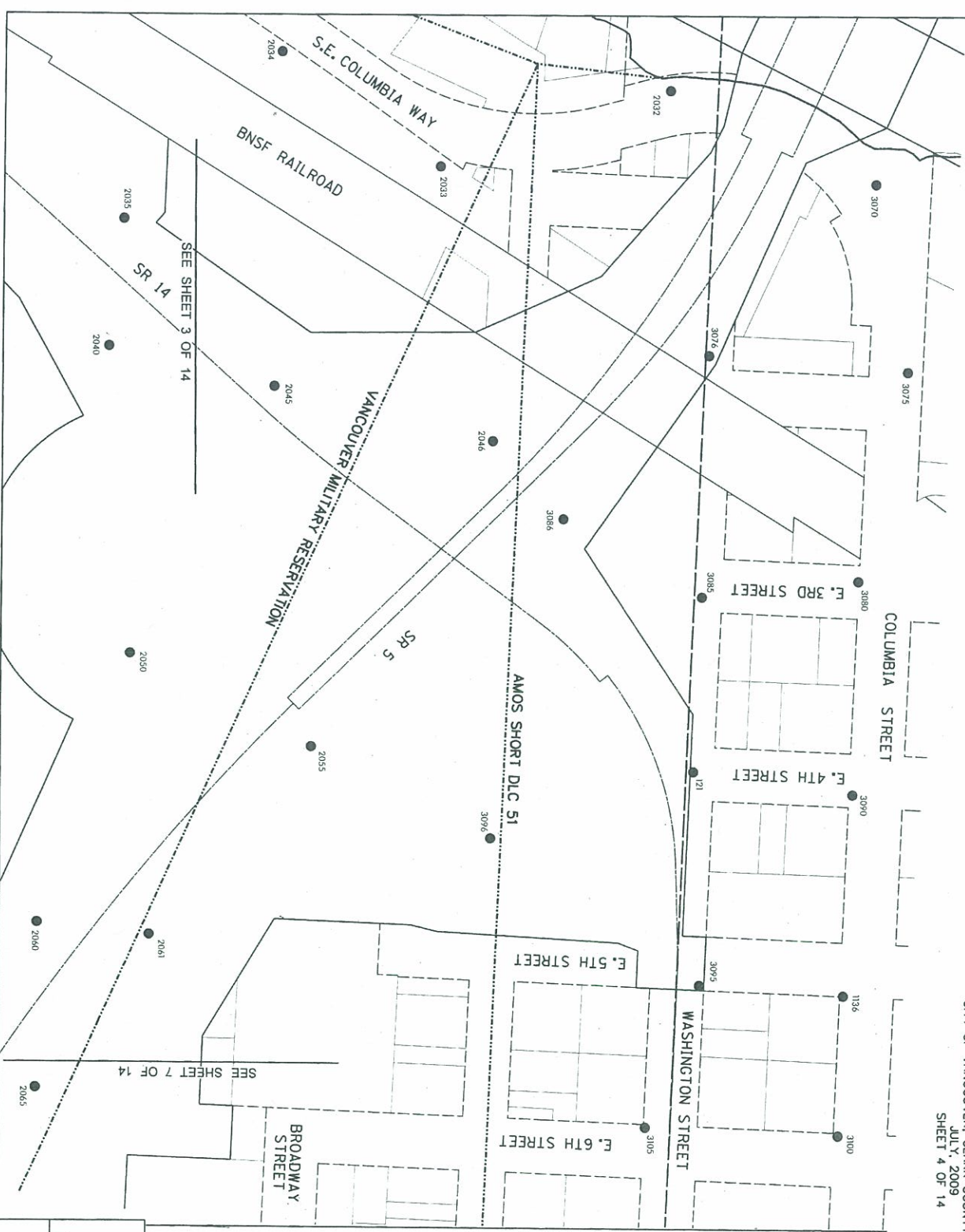
Washington State Department of Transportation

WASHTON STATE DEPARTMENT OF TRANSPORTATION

CALC BY: KJM
 CHECKED BY: KRW
 DRAWN BY: LMCA
 DGN NAME: _____

POINT NUMBER	NORTHING	EASTING	ELEVATION	DESCRIPTION	POINT NUMBER	NORTHING	EASTING	ELEVATION	DESCRIPTION
1136	11207.726	108422.480	38.615	SET 1.8" RC -C/C CONTROL 2057	3095	11270.548	1085426.499	42.828	SET 5/8" W/7" AC -C/C CONTROL 3095
2032	11205.996	1084493.945	26.762	SET 1.8" RC -C/C CONTROL 2032	3075	11202.019	1084441.246	33.809	SET 1.8" RC -C/C CONTROL 3075
2033	11205.996	1084493.945	26.762	SET 5/8" W/7" AC -C/C CONTROL 2033	3076	11202.019	1084441.246	33.809	SET 5/8" W/7" AC -C/C CONTROL 3076
2034	11209.975	1085071.655	32.112	SET 5/8" W/7" AC -C/C CONTROL 2034	3080	11248.217	1084212.926	33.211	SET 1.8" RC -C/C CONTROL 3080
2040	11306.410	1085322.059	32.112	SET 5/8" W/7" AC -C/C CONTROL 2040	3088	11247.448	1084444.193	33.932	SET 5/8" W/7" AC -C/C CONTROL 3088
2045	113126.775	1085079.035	45.891	SET 5/8" W/7" AC -C/C CONTROL 2045	3090	11271.281	1084219.843	37.674	SET 5/8" W/7" AC -C/C CONTROL 3090
2050	11324.237	1085290.797	38.703	SET 5/8" W/7" AC -C/C CONTROL 2050	3092	11298.073	1084454.165	47.358	SET 1.8" RC -C/C CONTROL 3092
2060	113924.926	1085423.158	40.618	SET 5/8" W/7" AC -C/C CONTROL 2060	3100	11263.990	1084239.343	45.927	SET 1.8" RC -C/C CONTROL 3100
2061	113924.926	1085260.096	42.308	SET 5/8" W/7" AC -C/C CONTROL 2061	3102	11228.647	1084324.270	45.849	SET 1.8" RC -C/C CONTROL 3102

SURVEY CONTROL DRAWING
 LOCATED IN
 PORTIONS OF SECTIONS 14, 15, 22, 23, 26 AND 27,
 THE AMOS SHORT DLC 51
 AND THE
 VANCOUVER MILITARY RESERVATION
 T 2 N., R 1 E., W.M.
 CITY OF VANCOUVER, CLARK COUNTY, WASHINGTON
 JULY, 2009
 SHEET 4 OF 14



LEGEND

- 3205 ● FOUND OR SET MONUMENT, AS NOTED IN CONTROL TABLE
- AC ALUMINUM CAP
- BC BRASS CAP
- CRK COLUMBIA RIVER CROSSING
- IR IRON ROD
- W/ WITH
- Y/C YELLOW PLASTIC CAP
- SR STATE ROUTE



DAVID EVANS AND ASSOCIATES, INC.
 2100 Southwest River Parkway
 Portland, OR 97201
 Phone: 503.283.9888



Washington State
 Department of Transportation
 CALC. BY: KIM
 CHECKED BY: KRY
 DRAWN BY: UNCA
 DGN NAME:

SURVEY CONTROL DRAWING

LOCATED IN
 PORTIONS OF SECTIONS 14, 15, 22, 23, 26 AND 27,
 THE AMOS SHORT DLC 51
 AND THE
 VANCOUVER MILITARY RESERVATION
 T 2 N, R 1 E, W.M.
 CITY OF VANCOUVER, CLARK COUNTY, WASHINGTON
 JULY, 2009
 SHEET 5 OF 14

POINT NUMBER	NORTHING	EASTING	ELEVATION	DESCRIPTION
3100	114522.892	108429.421	43.849	SET 1-1/8" RC - CONC CONTROL 3100
3105	114524.647	108453.270	53.534	SET 1-1/8" RC - CONC CONTROL 3105
3110	114524.649	108447.913	56.903	SET 1-1/8" RC - CONC CONTROL 3110
3115	114524.937	108474.159	57.094	SET 1-1/8" RC - CONC CONTROL 3115
3120	114524.937	108474.159	59.828	SET 1-1/8" RC - CONC CONTROL 3120
3125	114524.937	108474.159	69.238	SET 1-1/8" RC - CONC CONTROL 3125
3130	115051.284	108487.393	76.069	SET 1-1/8" RC - CONC CONTROL 3130
3135	115051.284	108487.393	80.201	SET 1-1/8" RC - CONC CONTROL 3135
3140	115051.284	108487.393	88.472	SET 1-1/8" RC - CONC CONTROL 3140
3145	115051.284	108487.393	94.967	SET 1-1/8" RC - CONC CONTROL 3145
3150	115051.284	108487.393	96.361	SET 1-1/8" RC - CONC CONTROL 3150
3155	115051.284	108487.393	99.481	SET 1-1/8" RC - CONC CONTROL 3155
3160	115051.284	108487.393	100.319	SET 1-1/8" RC - CONC CONTROL 3160
3165	115051.284	108487.393	100.319	SET 1-1/8" RC - CONC CONTROL 3165
3170	115051.284	108487.393	100.319	SET 1-1/8" RC - CONC CONTROL 3170
3175	115051.284	108487.393	100.319	SET 1-1/8" RC - CONC CONTROL 3175

- LEGEND**
- 3205 ● FOUND OR SET MONUMENT, AS NOTED IN CONTROL TABLE
 - ALUMINUM CAP
 - BRASS CAP
 - COLUMBIA RIVER CROSSING
 - IRON ROD
 - WITH
 - YELLOW PLASTIC CAP
 - STATE ROUTE



SEE SHEET 7 OF 14

SEE SHEET 6 OF 14

SEE SHEET 4 OF 14

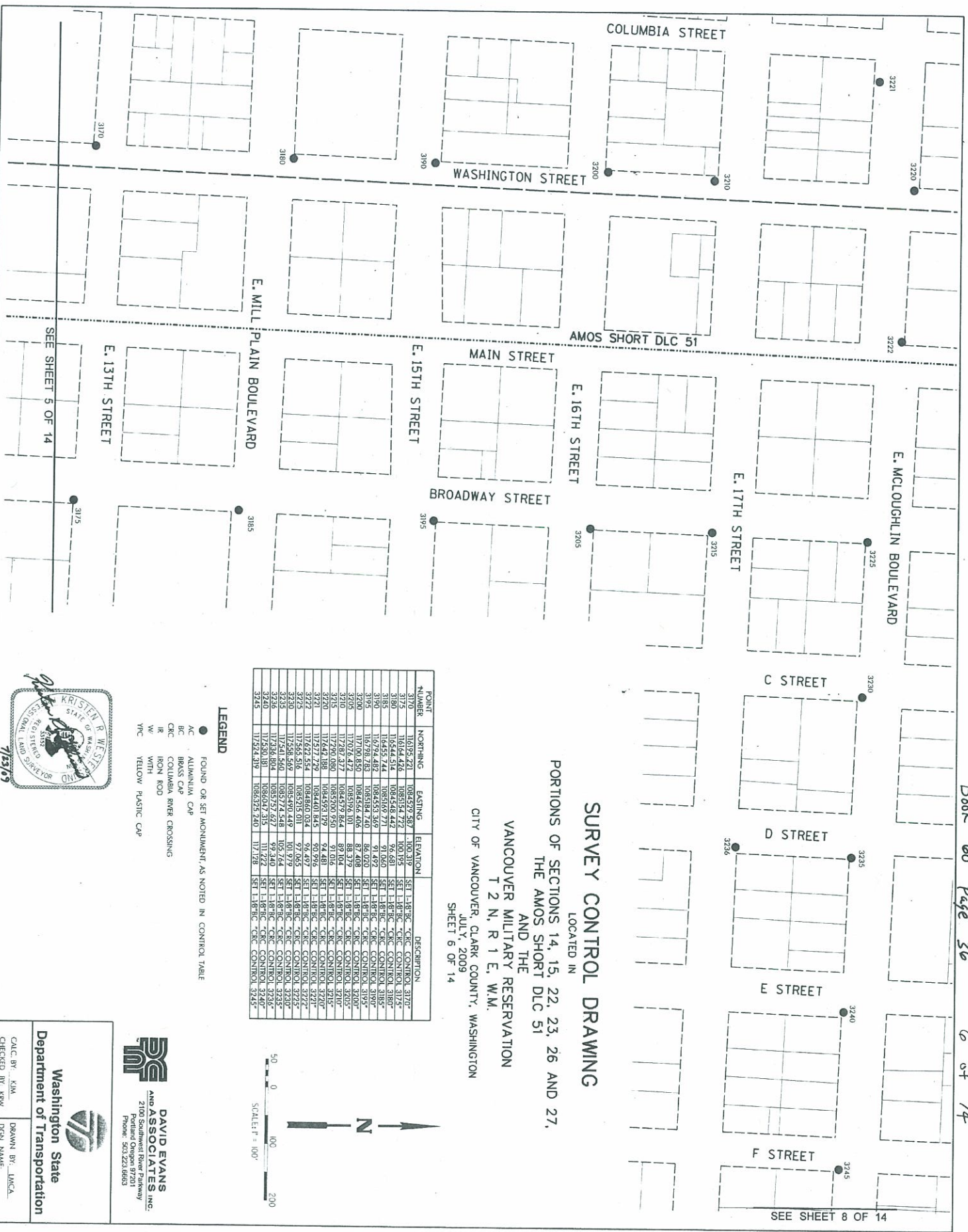
AMOS SHORT DLC 51



DAVID EVANS AND ASSOCIATES, INC.
 2100 Southeast River Parkway
 Portland Oregon 97201
 Phone: 503.223.8663

Washington State Department of Transportation

CALC. BY: KJM
 CHECKED BY: JKW
 DRAWN BY: LMCA
 DGN NAME:



SURVEY CONTROL DRAWING

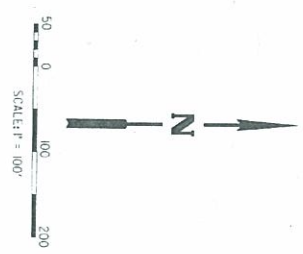
LOCATED IN
 PORTIONS OF SECTIONS 14, 15, 22, 23, 26 AND 27,
 THE AMOS SHORT DLC 51
 AND THE
 VANCOUVER MILITARY RESERVATION
 T 2 N, R 1 E, W.M.

CITY OF VANCOUVER, CLARK COUNTY, WASHINGTON
 JULY, 2009
 SHEET 6 OF 14

POINT NUMBER	NORTHING	EASTING	ELEVATION	DESCRIPTION
3170	10893.221	1084579.537	100.319	SET 1-1/8" RC "C" CONTROL 3170*
3190	10844.516	1084574.722	100.195	SET 1-1/8" RC "C" CONTROL 3175*
3185	10845.744	1084509.271	91.060	SET 1-1/8" RC "C" CONTROL 3180*
3195	10794.482	1084553.369	91.492	SET 1-1/8" RC "C" CONTROL 3190*
3200	10798.783	1084584.740	86.020	SET 1-1/8" RC "C" CONTROL 3195*
3205	10706.850	1084566.406	87.408	SET 1-1/8" RC "C" CONTROL 3200*
3210	10787.377	1084578.844	89.104	SET 1-1/8" RC "C" CONTROL 3205*
3215	10729.080	1084500.850	91.016	SET 1-1/8" RC "C" CONTROL 3210*
3220	10744.188	1084593.129	94.481	SET 1-1/8" RC "C" CONTROL 3215*
3225	10727.229	1084401.845	90.926	SET 1-1/8" RC "C" CONTROL 3220*
3230	10755.516	1084515.011	97.065	SET 1-1/8" RC "C" CONTROL 3225*
3235	10758.569	1084490.449	101.979	SET 1-1/8" RC "C" CONTROL 3230*
3240	10741.560	1084774.548	105.744	SET 1-1/8" RC "C" CONTROL 3235*
3245	10738.804	1084571.627	99.340	SET 1-1/8" RC "C" CONTROL 3240*
3250	10724.319	1084325.240	107.128	SET 1-1/8" RC "C" CONTROL 3245*

LEGEND

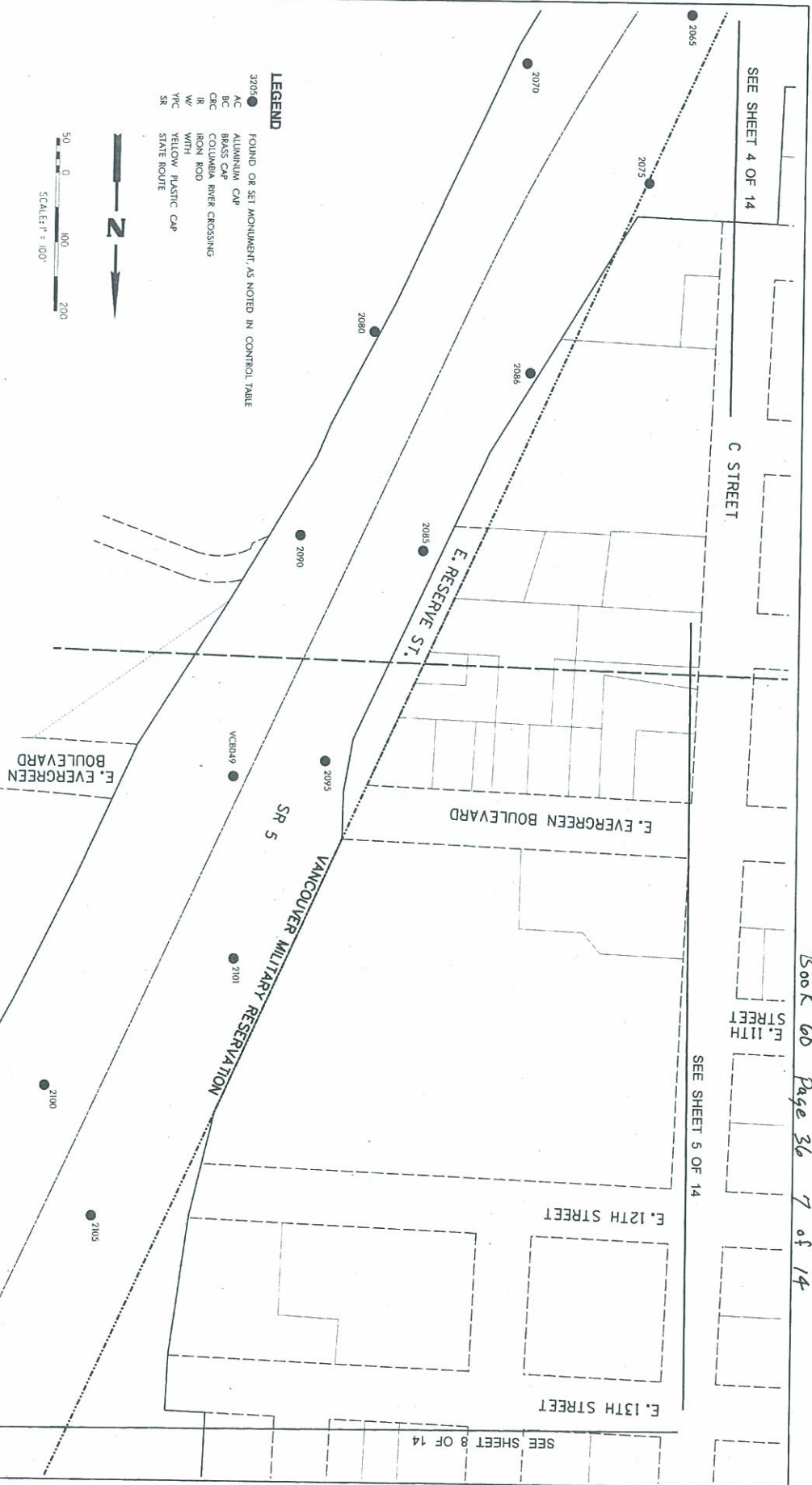
- FOUND OR SET MONUMENT, AS NOTED IN CONTROL TABLE
- ALUMINUM CAP
- BRASS CAP
- COLUMBIA RIVER CROSSING
- IRON ROD
- WITH
- YELLOW PLASTIC CAP



DAVID EVANS AND ASSOCIATES, INC.
 2100 Southwest River Parkway
 Portland Oregon 97201
 Phone: 503.223.0683

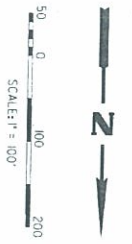
Washington State Department of Transportation

CALC BY: KJM
 CHECKED BY: KEV
 DRAWN BY: LKCA
 DGN NAME:



LEGEND
 FOUND OR SET MONUMENT, AS NOTED IN CONTROL TABLE

- 3205 ALUMINUM CAP
- 16 BRASS CAP
- 17 CEMENT
- 18 COLUMBIA RIVER CROSSING
- 19 IRON ROD
- 20 WITH
- 21 YTC
- 22 YELLOW PLASTIC CAP
- 23 STATE ROUTE
- 24 SR



POINT NUMBER	NORTHING	EASTING	ELEVATION	DESCRIPTION
2005	11470.518	1083426.499	47.878	SET 5/8" R. W/2" AC. CIRC. CONTROL 2005
2070	11474.814	1083466.809	57.373	SET 5/8" R. W/2" AC. CIRC. CONTROL 2070
2085	11464.216	1083881.375	76.719	SET 5/8" R. W/2" AC. CIRC. CONTROL 2085
2088	11491.054	1083805.500	72.108	SET 5/8" R. W/2" AC. CIRC. CONTROL 2088
2090	114691.249	1083555.115	69.315	SET 5/8" R. W/2" AC. CIRC. CONTROL 2090
2095	11523.435	1086347.794	84.388	SET 5/8" R. W/2" AC. CIRC. CONTROL 2095
2100	11523.435	1086347.794	84.388	SET 5/8" R. W/2" AC. CIRC. CONTROL 2100
2101	11523.435	1086347.794	84.388	SET 5/8" R. W/2" AC. CIRC. CONTROL 2101
2105	11546.651	1086071.806	93.718	SET 5/8" R. W/2" AC. CIRC. CONTROL 2105
2106	11521.415	1086277.694	95.210	SET 5/8" R. W/2" AC. CIRC. CONTROL 2106
VC8049	115281.834	1086072.039	103.547	SET 5/8" R. W/2" AC. CIRC. CONTROL 2106

SURVEY CONTROL DRAWING

LOCATED IN
 PORTIONS OF SECTIONS 14, 15, 22, 23, 26 AND 27,
 THE AMOS SHORT DLC 51
 AND THE
 VANCOUVER MILITARY RESERVATION
 T 2 N, R 1 E, W.M.

CITY OF VANCOUVER, CLARK COUNTY, WASHINGTON
 JULY, 2009
 SHEET 7 OF 14



**DAVID EVANS
 AND ASSOCIATES, INC.**
 21700 Pacific Road Parkway
 Portland, Oregon 97236
 Phone: 503.223.6663



Washington State
 Department of Transportation
 CALC. BY: KIM
 CHECKED BY: KRW
 DRAWN BY: LKCA
 DGN NAME: _____

SEE SHEET 6 OF 14
G STREET

E. 16TH STREET

H STREET

E. 17TH STREET

E. RESERVE STREET

SR 5

E. MILL PLAIN BOULEVARD

SEE SHEET 9 OF 14

SEC. 27
SEC. 26

E. MCLOUGHLIN BOULEVARD

FT VANCOUVER WAY

SURVEY CONTROL DRAWING
LOCATED IN
PORTIONS OF SECTIONS 14, 15, 22, 23, 26 AND 27,
THE AMOS SHORT DLC 51
AND THE
VANCOUVER MILITARY RESERVATION
T 2 N, R 1 E, W.M.
CITY OF VANCOUVER, CLARK COUNTY, WASHINGTON
JULY, 2009
SHEET 8 OF 14



- LEGEND**
- 3205 ● FOUND OR SET MONUMENT, AS NOTED IN CONTROL TABLE
 - AC ALUMINUM CAP
 - BC BRASS CAP
 - CC CONCRETE RIVER CROSSING
 - IR IRON ROD
 - W/ WITH
 - YPC YELLOW PLASTIC CAP
 - SR STATE ROUTE

POINT NUMBER	NORTHING	EASTING	ELEVATION	DESCRIPTION
2102	116871.210	108537.027	142.080	FD 2"IC - 5/8" 138.24"
2103	116551.124	108574.468	95.738	SET 5/8" IR W/2"AC - CIRC CONTROL 2102
2104	116551.124	108574.468	95.738	SET 5/8" IR W/2"AC - CIRC CONTROL 2102
2106	116272.421	1086436.305	106.920	SET 5/8" IR W/2"AC - CIRC CONTROL 2107
2107	116567.793	1086557.345	113.644	SET 5/8" IR W/2"AC - CIRC CONTROL 2107
2108	116895.750	1086479.585	123.094	SET 5/8" IR W/2"AC - CIRC CONTROL 2108
2109	117071.192	108679.712	131.945	SET 5/8" IR W/2"AC - CIRC CONTROL 2109
2110	117071.192	108679.712	131.945	SET 5/8" IR W/2"AC - CIRC CONTROL 2109
2115	117574.628	1086898.838	138.848	SET 5/8" IR W/2"AC - CIRC CONTROL 2107
2120	117198.384	1086998.843	128.648	SET 5/8" IR W/2"AC - CIRC CONTROL 2107
3250	117503.912	1086549.316	125.456	SET 1.18" IC - CIRC CONTROL 3250
3255	117288.758	1087076.807	122.406	SET 1.18" IC - CIRC CONTROL 3250
3260	117288.758	1087076.807	122.406	SET 1.18" IC - CIRC CONTROL 3250
3270	117017.259	1086074.588	142.346	SET 1.18" IC - CIRC CONTROL 3270
VCBR053	116472.313	1086475.581	85.766	FD 1.27" AC - VC BR053

DAVID EVANS AND ASSOCIATES, INC.
2100 Southwold River Parkway
Portland Oregon 97201
Phone: 503.223.6663



Washington State
Department of Transportation

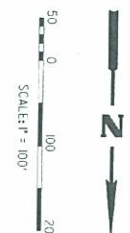
CALC BY: EML
CHECKED BY: ARW
DRAWN BY: LMCA
DGN NAME:





LEGEND

- 3205 ● FOUND OR SET MONUMENT, AS NOTED IN CONTROL TABLE
- AC ALUMINUM CAP
- BC BRASS CAP
- CRC COLUMBIA RIVER CROSSING
- IR IRON ROD
- W WITH
- YFC YELLOW PLASTIC CAP
- SR STATE ROUTE



POINT NUMBER	NORTHING	EASTING	ELEVATION	DESCRIPTION
2105	117324.628	1084889.038	139.756	SET 5/8" R W/ZAC - CRC CONTROL 2105
2115	117406.113	1087007.442	146.495	SET 5/8" R W/ZAC - CRC CONTROL 2115
2120	117526.009	1091740.269	156.002	SET 5/8" R W/ZAC - CRC CONTROL 2120
2131	117599.749	1097206.433	162.340	SET 5/8" R W/ZAC - CRC CONTROL 2131
2132	118055.083	1087206.433	162.340	SET 5/8" R W/ZAC - CRC CONTROL 2132
2133	118398.720	1087267.933	160.390	SET 5/8" R W/ZAC - CRC CONTROL 2133
2140	118199.611	1087408.203	164.971	SET 5/8" R W/ZAC - CRC CONTROL 2140
2150	118681.866	1087286.306	166.419	SET 5/8" R W/ZAC - CRC CONTROL 2150
2155	119044.242	1087288.914	171.225	SET 5/8" R W/ZAC - CRC CONTROL 2155
2160	119213.158	1087489.122	178.912	SET 5/8" R W/ZAC - CRC CONTROL 2160
2165	119384.703	1087320.482	180.034	SET 5/8" R W/ZAC - CRC CONTROL 2165
2175	117203.012	1085549.316	125.456	SET 1.18" RC - CRC CONTROL 2175
2180	117286.438	1089226.062	135.311	SET 1.18" RC - CRC CONTROL 2180
2185	117286.438	1089226.062	135.311	SET 1.18" RC - CRC CONTROL 2185
2190	118926.102	1087048.872	190.251	SET 1.18" RC - CRC CONTROL 2190
VC8056				SEE SHEET 8 OF 14
				SEE SHEET 10 OF 14

SURVEY CONTROL DRAWING
 LOCATED IN
 PORTIONS OF SECTIONS 14, 15, 22, 23, 26 AND 27,
 THE AMOS SHORT DLC 51
 AND THE
 VANCOUVER MILITARY RESERVATION
 T 2 N, R 1 E, W.M.
 CITY OF VANCOUVER, CLARK COUNTY, WASHINGTON
 JULY, 2009
 SHEET 9 OF 14



DAVID EVANS AND ASSOCIATES INC.
 2100 Southview Parkway
 Phone: 509.223.6600

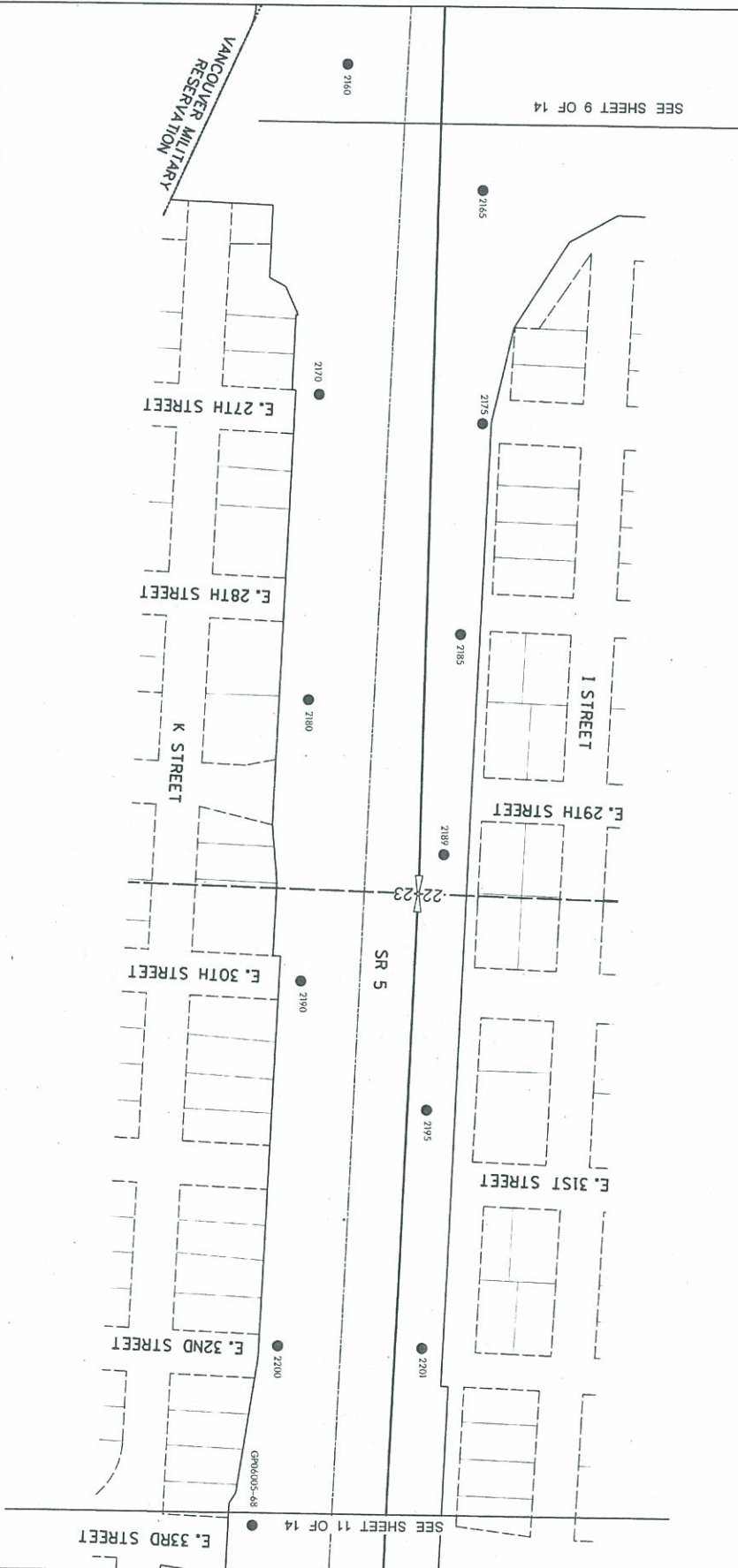
Washington State Department of Transportation
 Checked by: KLM
 Drawn by: LMCA
 DCN NAME: _____

- LEGEND**
- 3206 ● FOUND OR SET MONUMENT AS NOTED IN CONTROL TABLE
 - AC ALUMINUM CAP
 - BC BRASS CAP
 - CC COLUMBIA RIVER CROSSING
 - CR CEMENT ROD
 - WC WOOD WITH ROD
 - YPC YELLOW PLASTIC CAP
 - SR STATE ROUTE



SURVEY CONTROL DRAWING

LOCATED IN
 PORTIONS OF SECTIONS 14, 15, 22, 23, 26 AND 27,
 THE AMOS SHORT DLC 51
 AND THE
 VANCOUVER MILITARY RESERVATION
 T 2 N., R 1 E., W.M.
 CITY OF VANCOUVER, CLARK COUNTY, WASHINGTON
 JULY, 2009
 SHEET 10 OF 14



POINT NUMBER	NORTHING	EASTING	ELEVATION	DESCRIPTION
2160	11924.403	108720.482	112.871	SET 5/8" IR W/2" AC - CIRC CONTROL 2160
2165	11924.403	108720.482	112.871	SET 5/8" IR W/2" AC - CIRC CONTROL 2165
2170	11965.646	108727.117	189.134	SET 5/8" IR W/2" AC - CIRC CONTROL 2170
2175	119703.400	108729.442	189.050	SET 5/8" IR W/2" AC - CIRC CONTROL 2175
2180	119605.176	108731.597	192.668	SET 5/8" IR W/2" AC - CIRC CONTROL 2180
2185	120226.542	108734.748	198.458	SET 5/8" IR W/2" AC - CIRC CONTROL 2185
2189	120472.303	108737.893	193.212	SET 5/8" IR W/2" AC - CIRC CONTROL 2189
2195	120642.974	108744.871	197.996	SET 5/8" IR W/2" AC - CIRC CONTROL 2195
2200	120924.488	108745.238	206.773	SET 5/8" IR W/2" AC - CIRC CONTROL 2200
2201	120924.488	108745.238	217.817	SET 3/4" IR W/2" AC - CIRC CONTROL 2201
GRP6005-48	121219.489	108759.935	217.817	FD 3/4" - GRP6005-48 1997

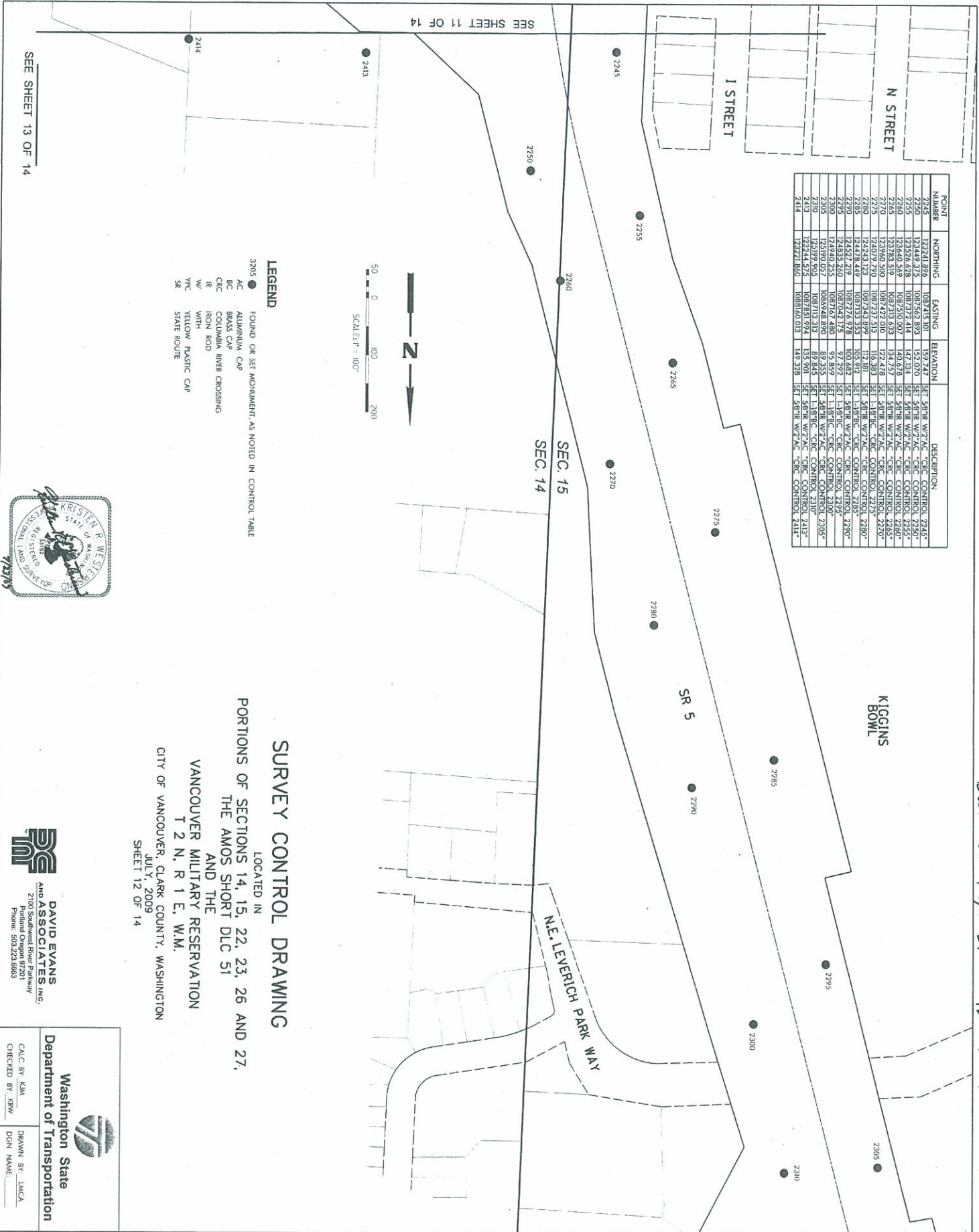


DAVID EVANS AND ASSOCIATES, INC.
 2100 Southeast River Parkway
 Phone: 509.223.8693

Washington State Department of Transportation

Calc. BY: KIM
 Checked BY: KSW
 Drawn BY: LMCA
 DGN NAME: _____

POINT NUMBER	NORTHING	EASTING	ELEVATION	DESCRIPTION
2245	124241.892	1087423.100	157.717	SET 58"R W/7"AC -CIRC CONTROL 2245"
2246	124241.892	1087423.100	157.717	SET 58"R W/7"AC -CIRC CONTROL 2246"
2247	124241.892	1087423.100	157.717	SET 58"R W/7"AC -CIRC CONTROL 2247"
2248	124241.892	1087423.100	157.717	SET 58"R W/7"AC -CIRC CONTROL 2248"
2249	124241.892	1087423.100	157.717	SET 58"R W/7"AC -CIRC CONTROL 2249"
2250	124241.892	1087423.100	157.717	SET 58"R W/7"AC -CIRC CONTROL 2250"
2251	124241.892	1087423.100	157.717	SET 58"R W/7"AC -CIRC CONTROL 2251"
2252	124241.892	1087423.100	157.717	SET 58"R W/7"AC -CIRC CONTROL 2252"
2253	124241.892	1087423.100	157.717	SET 58"R W/7"AC -CIRC CONTROL 2253"
2254	124241.892	1087423.100	157.717	SET 58"R W/7"AC -CIRC CONTROL 2254"
2255	124241.892	1087423.100	157.717	SET 58"R W/7"AC -CIRC CONTROL 2255"
2256	124241.892	1087423.100	157.717	SET 58"R W/7"AC -CIRC CONTROL 2256"
2257	124241.892	1087423.100	157.717	SET 58"R W/7"AC -CIRC CONTROL 2257"
2258	124241.892	1087423.100	157.717	SET 58"R W/7"AC -CIRC CONTROL 2258"
2259	124241.892	1087423.100	157.717	SET 58"R W/7"AC -CIRC CONTROL 2259"
2260	124241.892	1087423.100	157.717	SET 58"R W/7"AC -CIRC CONTROL 2260"
2261	124241.892	1087423.100	157.717	SET 58"R W/7"AC -CIRC CONTROL 2261"
2262	124241.892	1087423.100	157.717	SET 58"R W/7"AC -CIRC CONTROL 2262"
2263	124241.892	1087423.100	157.717	SET 58"R W/7"AC -CIRC CONTROL 2263"
2264	124241.892	1087423.100	157.717	SET 58"R W/7"AC -CIRC CONTROL 2264"
2265	124241.892	1087423.100	157.717	SET 58"R W/7"AC -CIRC CONTROL 2265"
2266	124241.892	1087423.100	157.717	SET 58"R W/7"AC -CIRC CONTROL 2266"
2267	124241.892	1087423.100	157.717	SET 58"R W/7"AC -CIRC CONTROL 2267"
2268	124241.892	1087423.100	157.717	SET 58"R W/7"AC -CIRC CONTROL 2268"
2269	124241.892	1087423.100	157.717	SET 58"R W/7"AC -CIRC CONTROL 2269"
2270	124241.892	1087423.100	157.717	SET 58"R W/7"AC -CIRC CONTROL 2270"
2271	124241.892	1087423.100	157.717	SET 58"R W/7"AC -CIRC CONTROL 2271"
2272	124241.892	1087423.100	157.717	SET 58"R W/7"AC -CIRC CONTROL 2272"
2273	124241.892	1087423.100	157.717	SET 58"R W/7"AC -CIRC CONTROL 2273"
2274	124241.892	1087423.100	157.717	SET 58"R W/7"AC -CIRC CONTROL 2274"
2275	124241.892	1087423.100	157.717	SET 58"R W/7"AC -CIRC CONTROL 2275"
2276	124241.892	1087423.100	157.717	SET 58"R W/7"AC -CIRC CONTROL 2276"
2277	124241.892	1087423.100	157.717	SET 58"R W/7"AC -CIRC CONTROL 2277"
2278	124241.892	1087423.100	157.717	SET 58"R W/7"AC -CIRC CONTROL 2278"
2279	124241.892	1087423.100	157.717	SET 58"R W/7"AC -CIRC CONTROL 2279"
2280	124241.892	1087423.100	157.717	SET 58"R W/7"AC -CIRC CONTROL 2280"
2281	124241.892	1087423.100	157.717	SET 58"R W/7"AC -CIRC CONTROL 2281"
2282	124241.892	1087423.100	157.717	SET 58"R W/7"AC -CIRC CONTROL 2282"
2283	124241.892	1087423.100	157.717	SET 58"R W/7"AC -CIRC CONTROL 2283"
2284	124241.892	1087423.100	157.717	SET 58"R W/7"AC -CIRC CONTROL 2284"
2285	124241.892	1087423.100	157.717	SET 58"R W/7"AC -CIRC CONTROL 2285"
2286	124241.892	1087423.100	157.717	SET 58"R W/7"AC -CIRC CONTROL 2286"
2287	124241.892	1087423.100	157.717	SET 58"R W/7"AC -CIRC CONTROL 2287"
2288	124241.892	1087423.100	157.717	SET 58"R W/7"AC -CIRC CONTROL 2288"
2289	124241.892	1087423.100	157.717	SET 58"R W/7"AC -CIRC CONTROL 2289"
2290	124241.892	1087423.100	157.717	SET 58"R W/7"AC -CIRC CONTROL 2290"
2291	124241.892	1087423.100	157.717	SET 58"R W/7"AC -CIRC CONTROL 2291"
2292	124241.892	1087423.100	157.717	SET 58"R W/7"AC -CIRC CONTROL 2292"
2293	124241.892	1087423.100	157.717	SET 58"R W/7"AC -CIRC CONTROL 2293"
2294	124241.892	1087423.100	157.717	SET 58"R W/7"AC -CIRC CONTROL 2294"
2295	124241.892	1087423.100	157.717	SET 58"R W/7"AC -CIRC CONTROL 2295"
2296	124241.892	1087423.100	157.717	SET 58"R W/7"AC -CIRC CONTROL 2296"
2297	124241.892	1087423.100	157.717	SET 58"R W/7"AC -CIRC CONTROL 2297"
2298	124241.892	1087423.100	157.717	SET 58"R W/7"AC -CIRC CONTROL 2298"
2299	124241.892	1087423.100	157.717	SET 58"R W/7"AC -CIRC CONTROL 2299"
2300	124241.892	1087423.100	157.717	SET 58"R W/7"AC -CIRC CONTROL 2300"
2301	124241.892	1087423.100	157.717	SET 58"R W/7"AC -CIRC CONTROL 2301"
2302	124241.892	1087423.100	157.717	SET 58"R W/7"AC -CIRC CONTROL 2302"
2303	124241.892	1087423.100	157.717	SET 58"R W/7"AC -CIRC CONTROL 2303"
2304	124241.892	1087423.100	157.717	SET 58"R W/7"AC -CIRC CONTROL 2304"
2305	124241.892	1087423.100	157.717	SET 58"R W/7"AC -CIRC CONTROL 2305"
2306	124241.892	1087423.100	157.717	SET 58"R W/7"AC -CIRC CONTROL 2306"
2307	124241.892	1087423.100	157.717	SET 58"R W/7"AC -CIRC CONTROL 2307"
2308	124241.892	1087423.100	157.717	SET 58"R W/7"AC -CIRC CONTROL 2308"
2309	124241.892	1087423.100	157.717	SET 58"R W/7"AC -CIRC CONTROL 2309"
2310	124241.892	1087423.100	157.717	SET 58"R W/7"AC -CIRC CONTROL 2310"
2311	124241.892	1087423.100	157.717	SET 58"R W/7"AC -CIRC CONTROL 2311"
2312	124241.892	1087423.100	157.717	SET 58"R W/7"AC -CIRC CONTROL 2312"
2313	124241.892	1087423.100	157.717	SET 58"R W/7"AC -CIRC CONTROL 2313"
2314	124241.892	1087423.100	157.717	SET 58"R W/7"AC -CIRC CONTROL 2314"
2315	124241.892	1087423.100	157.717	SET 58"R W/7"AC -CIRC CONTROL 2315"



LEGEND
 3205 ● FOUND OR SET MONUMENT, AS NOTED IN CONTROL TABLE
 AC ALUMINUM CAP
 BC BRASS CAP
 IR IRON ROD
 W/ WOOD
 YPC YELLOW PLASTIC CAP
 SR STATE ROUTE

SURVEY CONTROL DRAWING

LOCATED IN
 PORTIONS OF SECTIONS 14, 15, 22, 23, 26 AND 27,
 THE AMOS SHORT DLC 51
 AND THE
 VANCOUVER MILITARY RESERVATION
 T 2 N, R 1 E, W.M.
 CITY OF VANCOUVER, CLARK COUNTY, WASHINGTON
 JULY, 2009
 SHEET 12 OF 14



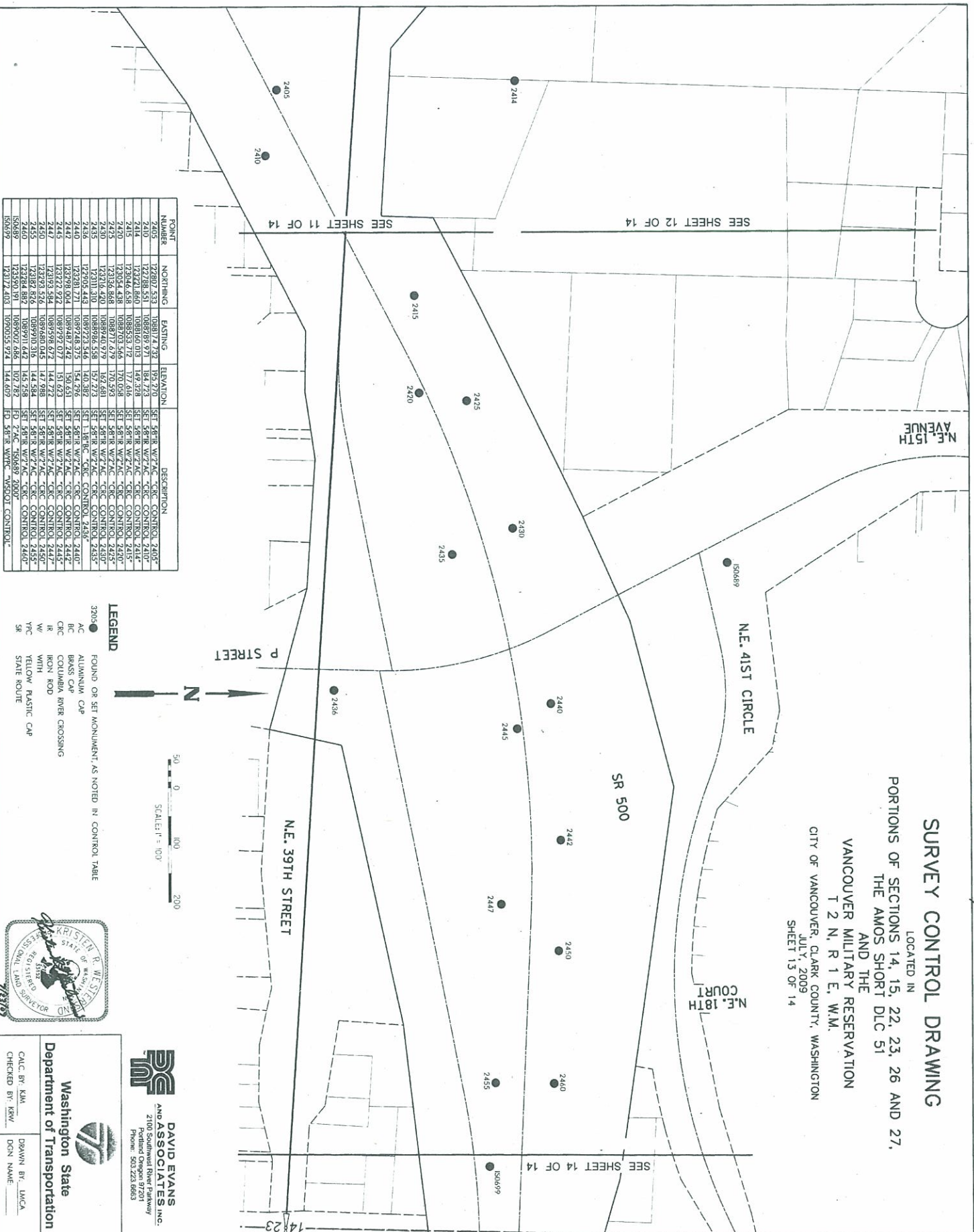
DAVID EVANS AND ASSOCIATES INC.
 2100 Southland River Parkway
 Portland Oregon 97201
 Phone: 503.223.6863

Washington State Department of Transportation

CALC BY: KJM
 CHECKED BY: KRW
 DRAWN BY: LMCA
 DGN NAME: _____

SURVEY CONTROL DRAWING

LOCATED IN
 PORTIONS OF SECTIONS 14, 15, 22, 23, 26 AND 27,
 THE AMOS SHORT DLC 51
 AND THE
 VANCOUVER MILITARY RESERVATION
 T 2 N, R 1 E, W.M.
 CITY OF VANCOUVER, CLARK COUNTY, WASHINGTON
 JULY, 2009
 SHEET 13 OF 14



POINT NUMBER	NORTHING	EASTING	ELEVATION	DESCRIPTION
2405	12308.531	1089289.971	184.723	SET 58°18' W/7°42' -CRC CONTROL 2405*
2410	12321.860	1089160.013	149.378	SET 58°18' W/7°42' -CRC CONTROL 2410*
2414	12304.438	1089533.719	177.616	SET 58°18' W/7°42' -CRC CONTROL 2414*
2415	12304.438	1089703.566	170.058	SET 58°18' W/7°42' -CRC CONTROL 2415*
2420	12306.581	1089740.979	162.481	SET 58°18' W/7°42' -CRC CONTROL 2420*
2425	12311.310	1089723.546	140.382	SET 1.18° RC -CRC CONTROL 2425*
2430	12321.860	1089748.375	154.796	SET 58°18' W/7°42' -CRC CONTROL 2430*
2435	12321.860	1089748.375	154.796	SET 58°18' W/7°42' -CRC CONTROL 2435*
2440	12321.860	1089748.375	154.796	SET 58°18' W/7°42' -CRC CONTROL 2440*
2442	12321.860	1089748.375	154.796	SET 58°18' W/7°42' -CRC CONTROL 2442*
2444	12321.860	1089748.375	154.796	SET 58°18' W/7°42' -CRC CONTROL 2444*
2447	12321.860	1089748.375	154.796	SET 58°18' W/7°42' -CRC CONTROL 2447*
2450	12321.860	1089748.375	154.796	SET 58°18' W/7°42' -CRC CONTROL 2450*
2455	12321.860	1089748.375	154.796	SET 58°18' W/7°42' -CRC CONTROL 2455*
150699	12317.403	1090055.924	144.609	ID 58°18' W/7°42' -CRC CONTROL

LEGEND

- 3205 ● FOUND OR SET MONUMENT, AS NOTED IN CONTROL TABLE
- AC ALUMINUM CAP
- BC BRASS CAP
- CRC COLUMBIA RIVER CROSSING
- IR IRON ROD
- W WITH
- YPC YELLOW PLASTIC CAP
- SR STATE ROUTE



David Evans and Associates, Inc.
 2100 Southwest River Parkway
 Portland Oregon 97201
 Phone: 503.223.0663

Washington State Department of Transportation

CALC. BY: KJM
 CHECKED BY: KSW
 DRAWN BY: LMCA
 DGN NAME: _____

