



**Washington State  
Department of Transportation**  
Paula J. Hammond, P.E.  
Secretary of Transportation

**Southwest Region**  
11018 Northeast 51st Circle  
P.O. Box 1709  
Vancouver, WA 98668-1709  
360-905-2000 / Fax 360-905-2222  
TTY: 1-800-833-6388  
[www.wsdot.wa.gov](http://www.wsdot.wa.gov)

January 27, 2011

American Construction Co, Inc.  
1501 Taylor Way  
Tacoma, WA 98421-4100

Contract 8078, I-5, Columbia River Bridge  
Temporary Pile Test Program  
WA 0.3 to OR MP 308.0  
State Project  
Serial Letter No. 7

RE: Response to Request for Information No. 2

Gentlemen:

This letter is in response to your Request for Information No. 2 received January 27, 2011, which asked the following questions:

- What is the required tolerance for these temporary test pile? Do these piles have to be placed per Section 6-05.3(11)A?
- If these piles have to be accurately located, we will require WSDOT to provide additional survey information such as a couple more survey points (with coordinates) by the river bank.

The tolerance of the as-built locations after piles have been driven is  $\pm 0.02$  feet as shown in the contract special provisions. We are not as concerned that the location of piles are driven at the exact coordinates shown in the plans, although they should be close, as we are concerned with accurate as-built locations.

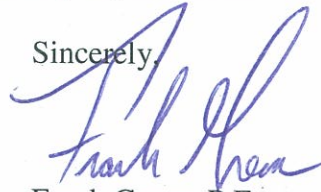
Section 6-05.3(11)A of the Standard Specifications does not pertain to the tolerance of the temporary test piles.

I have attached the record of survey for the Washington side Project Survey Control. This includes descriptions, coordinates, scale factors, datum, and mapped positions of all CRC Project Control in Washington.

American Construction Co, Inc.  
January 27, 2011  
Page 2

If there are any questions, please contact this office at (360) 816-2208.

Sincerely,



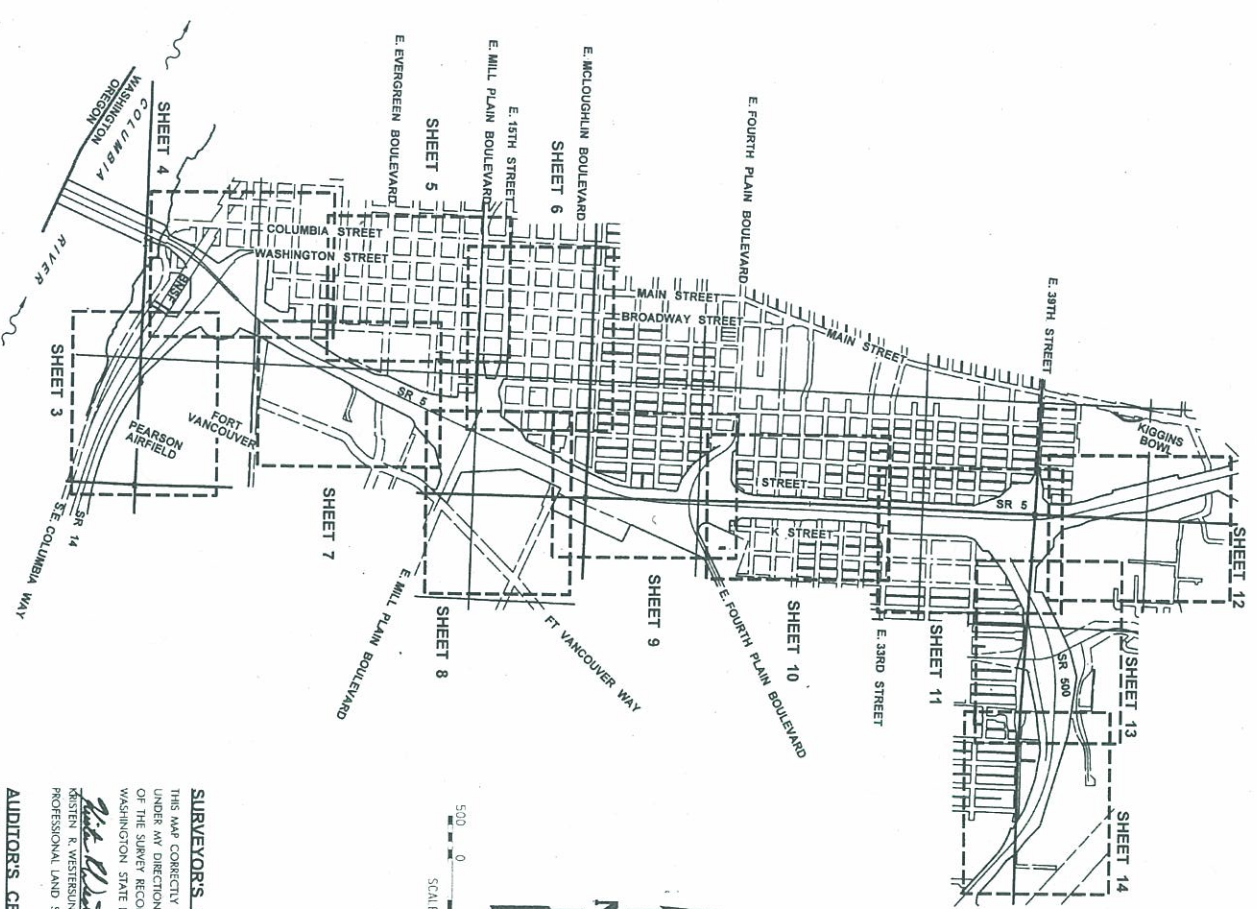
Frank Green, P.E.  
CRC Structures Engineering Manager

KAD:np  
Attachment

cc: Document Control  
M. Degenhart  
N. Peppers

### SURVEY CONTROL DRAWING

LOCATED IN THE  
 S 1/2 OF THE SW 1/4 AND SW 1/4 OF THE SE 1/4 OF SECTION 14;  
 THE E 1/2 OF THE SE 1/4 OF SECTION 15,  
 THE SW 1/4 AND THE E 1/2 OF THE NE 1/4 AND E 1/2 OF THE SE 1/4 OF SEC 22;  
 THE W 1/2 OF THE NW 1/4 AND W 1/2 OF THE SW 1/4 OF SECTION 23;  
 THE NW 1/4 OF THE NW 1/4 AND THE W 1/2 OF THE SW 1/4 OF SECTION 26;  
 THE E 1/2 OF THE SW 1/4, THE E 1/2 OF THE NW 1/4  
 AND E 1/2 OF SECTION 27;  
 THE AMOS SHORT DLC 51 AND THE VANCOUVER MILITARY RESERVATION  
 T 2 N, R 1 E, W.M.  
 CITY OF VANCOUVER, CLARK COUNTY, WASHINGTON  
 JULY, 2009  
 SHEET 1 OF 14



**SHEET INDEX:**

- SHEET 1 ..... SHEET LAYOUT, SURVEYOR'S CERTIFICATE, AUDITOR'S CERTIFICATE, SHEET INDEX
- SHEET 2 ..... CONTROL LAYOUT, NARRATIVE AND BENCHMARK LIST
- SHEETS 3 - 14 ..... PLAN SHEETS

**SURVEYOR'S CERTIFICATE**

THIS MAP CORRECTLY REPRESENTS A SURVEY MADE BY ME OR UNDER MY DIRECTION, IN CONFORMANCE WITH REQUIREMENTS OF THE SURVEY RECORDING ACT, AT THE REQUEST OF THE WASHINGTON STATE DEPARTMENT OF TRANSPORTATION.

KRISTEN R. WESTERSUND  
 PROFESSIONAL LAND SURVEYOR, LS #3152



**AUDITOR'S CERTIFICATE**

FILED FOR RECORD THIS 22<sup>ND</sup> DAY OF July, 2009 AT 2:11 P.M. IN BOOK 60 OF SURVEYS AT PAGE 36 AT THE REQUEST OF DAVID EVANS AND ASSOCIATES, INC.

County Auditor *David Evans* 7/23/09

**DAVID EVANS AND ASSOCIATES, INC.**  
 2700 Southview Road Parkway  
 Phone: 509.223.8653

**Washington State Department of Transportation**

CALC BY: KJM  
 CHECKED BY: KRW  
 DRAWN BY: LMKCA  
 DON NAME: \_\_\_\_\_

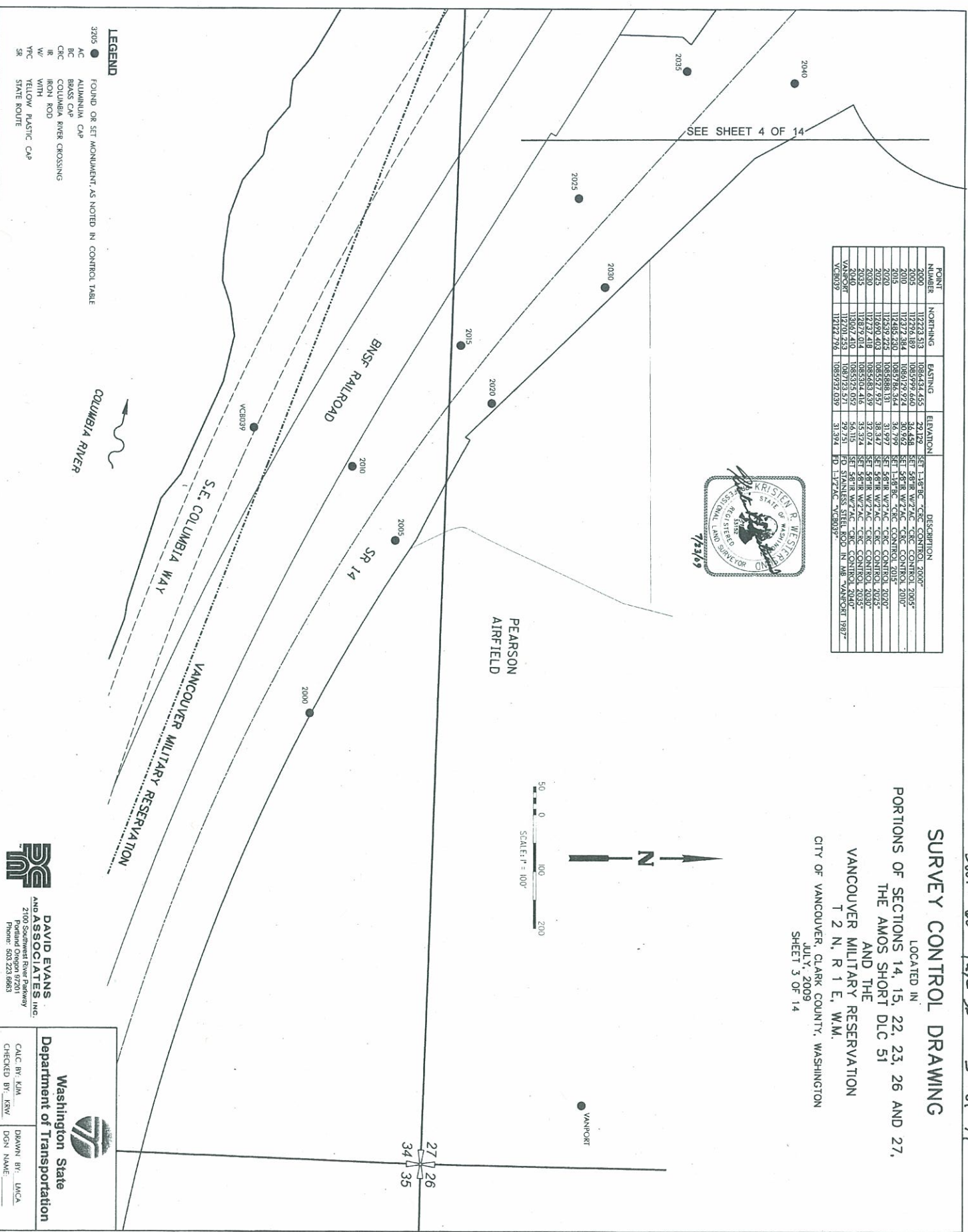


POINT NUMBER	NORTHING	EASTING	ELEVATION	DESCRIPTION
2000	112723.513	1085434.455	29.129	SET 1.58" BC - CONC CONTROL 2000*
2005	112926.189	1085979.460	34.484	SET 1.58" BC - CONC CONTROL 2005*
2010	112727.384	1085727.924	30.992	SET 1.58" R WZ AC - CONC CONTROL 2010*
2015	112529.225	1085888.191	31.997	SET 1.58" R WZ AC - CONC CONTROL 2015*
2020	112690.403	1085577.957	38.347	SET 1.58" R WZ AC - CONC CONTROL 2020*
2025	112737.418	1085683.639	32.074	SET 1.58" R WZ AC - CONC CONTROL 2025*
2030	112877.014	1085514.416	32.524	SET 1.58" R WZ AC - CONC CONTROL 2030*
2035	112701.253	1085715.971	29.751	FO STAINLESS STEEL ROD IN CONC VANDORF 1987
VANDORF	112724.756	1085979.039	31.394	FO 1.57" AC - VANDORF 1987



### SURVEY CONTROL DRAWING

LOCATED IN  
 PORTIONS OF SECTIONS 14, 15, 22, 23, 26 AND 27,  
 THE AMOS SHORT DLC 51  
 AND THE  
 VANCOUVER MILITARY RESERVATION  
 T 2 N., R 1 E., W.M.  
 CITY OF VANCOUVER, CLARK COUNTY, WASHINGTON  
 JULY, 2009  
 SHEET 3 OF 14



- LEGEND**
- 3205 ● FOUND OR SET MONUMENT, AS NOTED IN CONTROL TABLE
  - AC ALUMINUM CAP
  - BC BRASS CAP
  - CRC COLUMBIA RIVER CROSSING
  - IR IRON ROD
  - W/ WITH
  - Y/C YELLOW PLASTIC CAP
  - SR STATE ROUTE

**DAVID EVANS AND ASSOCIATES, INC.**  
 27100 Southwest River Parkway  
 Portland, Oregon 97201  
 Phone: 503.223.8683

Washington State Department of Transportation

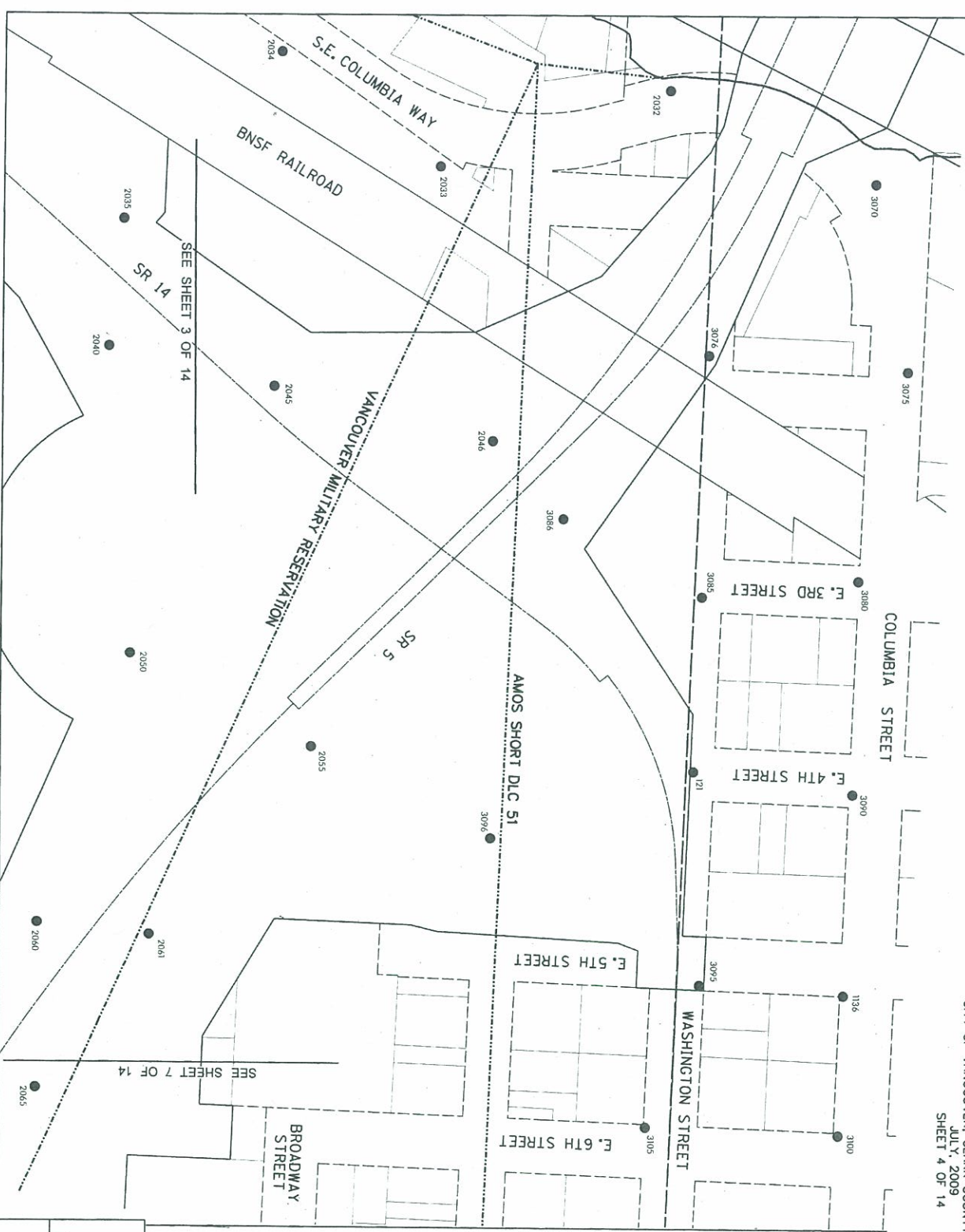
WASH STATE DEPT OF TRANSPORTATION

CALC BY: KJM  
 CHECKED BY: KRW

DRAWN BY: LMCA  
 DGN NAME: \_\_\_\_\_

POINT NUMBER	NORTHING	EASTING	ELEVATION	DESCRIPTION
1136	113207.242	1084228.480	38.615	SET 1.8" RC -C/C CONTROL 2057
1136	114030.596	1084232.451	26.762	SET 1.8" RC -C/C CONTROL 2057
2033	112485.906	1084493.945	32.757	SET 5.8" R W/7" AC -C/C CONTROL 2033
2033	112799.975	1084833.063	32.757	SET 5.8" R W/7" AC -C/C CONTROL 2033
2034	112429.975	1085071.655	32.112	SET 5.8" R W/7" AC -C/C CONTROL 2034
2040	113067.410	1085322.059	32.112	SET 5.8" R W/7" AC -C/C CONTROL 2040
2045	113126.775	1085079.035	45.891	SET 5.8" R W/7" AC -C/C CONTROL 2045
2050	113206.666	1084755.897	26.445	SET 5.8" R W/7" AC -C/C CONTROL 2050
2050	113244.237	1085290.797	38.703	SET 5.8" R W/7" AC -C/C CONTROL 2050
2060	113924.926	1085423.158	40.618	SET 5.8" R W/7" AC -C/C CONTROL 2060
2061	113947.599	1085260.096	42.308	SET 5.8" R W/7" AC -C/C CONTROL 2061
2055	11470.548	1085426.499	42.828	SET 5.8" R W/7" AC -C/C CONTROL 2055
3075	11202.019	1084413.216	33.807	SET 1.8" RC -C/C CONTROL 3075
3075	112078.497	1084435.765	33.799	SET 5.8" R W/7" AC -C/C CONTROL 3075
3080	112418.217	1084212.926	33.211	SET 1.8" RC -C/C CONTROL 3080
3080	112437.448	1084444.193	33.932	SET 5.8" R W/7" AC -C/C CONTROL 3080
3090	11271.281	1084239.883	32.674	SET 1.8" RC -C/C CONTROL 3090
3092	114018.820	1084445.212	42.358	SET 1.8" RC -C/C CONTROL 3092
3092	113798.073	1084756.165	31.777	SET 1.8" RC -C/C CONTROL 3092
3100	114231.990	1084239.343	45.592	SET 1.8" RC -C/C CONTROL 3100
3102	114248.447	1084234.270	45.849	SET 1.8" RC -C/C CONTROL 3102

**SURVEY CONTROL DRAWING**  
 LOCATED IN  
 PORTIONS OF SECTIONS 14, 15, 22, 23, 26 AND 27,  
 THE AMOS SHORT DLC 51  
 AND THE  
 VANCOUVER MILITARY RESERVATION  
 T 2 N., R 1 E., W.M.  
 CITY OF VANCOUVER, CLARK COUNTY, WASHINGTON  
 JULY, 2009  
 SHEET 4 OF 14



**LEGEND**

- 3205 ● FOUND OR SET MONUMENT, AS NOTED IN CONTROL TABLE
- AC ALUMINUM CAP
- BC BRASS CAP
- CRK COLUMBIA RIVER CROSSING
- IR IRON ROD
- W/ WITH
- Y/C YELLOW PLASTIC CAP
- SR STATE ROUTE



**DAVID EVANS AND ASSOCIATES, INC.**  
 2100 Southwest River Parkway  
 Portland, OR 97201  
 Phone: 503.283.9888

**Washington State Department of Transportation**

CALC. BY: KIM  
 CHECKED BY: KRY  
 DRAWN BY: UNCA  
 DGN NAME: \_\_\_\_\_

**SURVEY CONTROL DRAWING**

LOCATED IN  
 PORTIONS OF SECTIONS 14, 15, 22, 23, 26 AND 27,  
 THE AMOS SHORT DLC 51  
 AND THE  
 VANCOUVER MILITARY RESERVATION  
 T 2 N, R 1 E, W.M.  
 CITY OF VANCOUVER, CLARK COUNTY, WASHINGTON  
 JULY, 2009  
 SHEET 5 OF 14

POINT NUMBER	NORTHING	EASTING	ELEVATION	DESCRIPTION
3100	114522.889	108429.421	43.849	SET 1-1/8" BC - CONC CONTROL 3100
3105	114524.647	108454.210	53.534	SET 1-1/8" BC - CONC CONTROL 3105
3110	114524.649	108447.913	56.903	SET 1-1/8" BC - CONC CONTROL 3110
3115	114524.937	108474.159	57.094	SET 1-1/8" BC - CONC CONTROL 3115
3120	114524.937	108474.159	59.828	SET 1-1/8" BC - CONC CONTROL 3120
3125	114524.937	108474.159	69.238	SET 1-1/8" BC - CONC CONTROL 3125
3130	115051.284	108487.393	76.069	SET 1-1/8" BC - CONC CONTROL 3130
3135	115051.284	108487.393	80.201	SET 1-1/8" BC - CONC CONTROL 3135
3140	115051.284	108487.393	88.472	SET 1-1/8" BC - CONC CONTROL 3140
3145	115051.284	108487.393	94.967	SET 1-1/8" BC - CONC CONTROL 3145
3150	115051.284	108487.393	96.361	SET 1-1/8" BC - CONC CONTROL 3150
3155	115051.284	108487.393	99.481	SET 1-1/8" BC - CONC CONTROL 3155
3160	115051.284	108487.393	100.319	SET 1-1/8" BC - CONC CONTROL 3160
3165	115051.284	108487.393	100.319	SET 1-1/8" BC - CONC CONTROL 3165
3170	115051.284	108487.393	100.319	SET 1-1/8" BC - CONC CONTROL 3170
3175	115051.284	108487.393	100.319	SET 1-1/8" BC - CONC CONTROL 3175

- LEGEND**
- 3205 ● FOUND OR SET MONUMENT, AS NOTED IN CONTROL TABLE
  - ALUMINUM CAP
  - BRASS CAP
  - COLUMBIA RIVER CROSSING
  - IRON ROD
  - WITH
  - YELLOW PLASTIC CAP
  - STATE ROUTE



SEE SHEET 7 OF 14

SEE SHEET 6 OF 14

SEE SHEET 4 OF 14

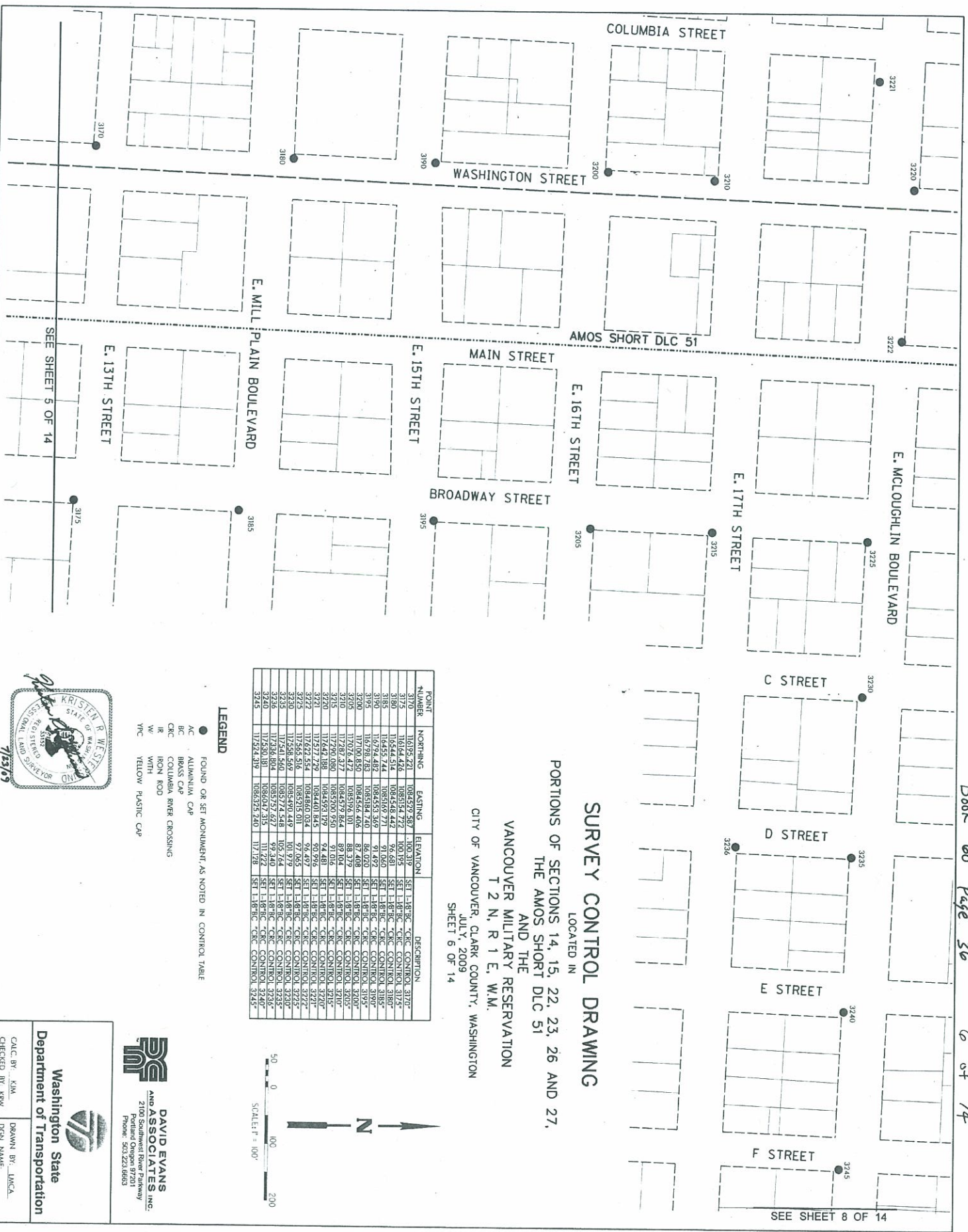
AMOS SHORT DLC 51



**DAVID EVANS AND ASSOCIATES, INC.**  
 2100 Southeast Pike Parkway  
 Portland Oregon 97201  
 Phone: 503.223.8663

**Washington State Department of Transportation**

CALC. BY: KJM  
 CHECKED BY: JKW  
 DRAWN BY: LMCA  
 DGN NAME:



**SURVEY CONTROL DRAWING**

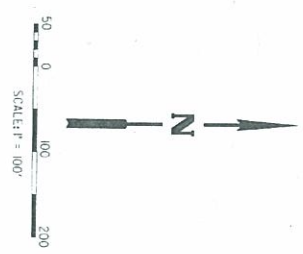
LOCATED IN  
 PORTIONS OF SECTIONS 14, 15, 22, 23, 26 AND 27,  
 THE AMOS SHORT DLC 51  
 AND THE  
 VANCOUVER MILITARY RESERVATION  
 T 2 N, R 1 E, W.M.

CITY OF VANCOUVER, CLARK COUNTY, WASHINGTON  
 JULY, 2009  
 SHEET 6 OF 14

POINT NUMBER	NORTHING	EASTING	ELEVATION	DESCRIPTION
3170	10193.221	1084579.537	100.319	SET 1-18" RC "C" CONTROL 3170*
3180	10454.516	1084574.722	100.195	SET 1-18" RC "C" CONTROL 3180*
3185	10455.744	1084569.771	91.060	SET 1-18" RC "C" CONTROL 3185*
3190	10794.482	1084553.369	91.497	SET 1-18" RC "C" CONTROL 3190*
3195	10798.783	1084514.740	86.070	SET 1-18" RC "C" CONTROL 3195*
3200	10706.850	1084566.406	87.408	SET 1-18" RC "C" CONTROL 3200*
3205	10707.422	1084579.864	89.104	SET 1-18" RC "C" CONTROL 3205*
3210	10707.377	1084579.864	89.104	SET 1-18" RC "C" CONTROL 3210*
3215	10720.080	1084570.950	91.016	SET 1-18" RC "C" CONTROL 3215*
3220	10744.188	1084593.179	94.481	SET 1-18" RC "C" CONTROL 3220*
3225	10727.229	1084401.845	90.995	SET 1-18" RC "C" CONTROL 3225*
3230	10755.516	1084570.950	91.016	SET 1-18" RC "C" CONTROL 3230*
3235	10758.569	1084490.449	101.979	SET 1-18" RC "C" CONTROL 3235*
3240	10741.560	1084774.548	105.744	SET 1-18" RC "C" CONTROL 3240*
3245	10738.804	1084579.864	99.340	SET 1-18" RC "C" CONTROL 3245*

**LEGEND**

- FOUND OR SET MONUMENT, AS NOTED IN CONTROL TABLE
- ALUMINUM CAP
- BRASS CAP
- COLUMBIA RIVER CROSSING
- IRON ROD
- WITH
- YELLOW PLASTIC CAP



**DAVID EVANS AND ASSOCIATES, INC.**  
 2100 Southwest River Parkway  
 Portland Oregon 97201  
 Phone: 503.223.0683

Washington State  
 Department of Transportation

CALC BY: KJM  
 CHECKED BY: REV  
 DRAWN BY: LKCA  
 DGN NAME: \_\_\_\_\_





SEE SHEET 6 OF 14  
G STREET

E. 16TH STREET

H STREET

E. 17TH STREET

E. RESERVE STREET

SR 5

E. MILL PLAIN BOULEVARD

SEE SHEET 9 OF 14

SEC. 27  
SEC. 26

E. MCLOUGHLIN BOULEVARD

FT VANCOUVER WAY

**SURVEY CONTROL DRAWING**  
LOCATED IN  
PORTIONS OF SECTIONS 14, 15, 22, 23, 26 AND 27,  
THE AMOS SHORT DLC 51  
AND THE  
VANCOUVER MILITARY RESERVATION  
T 2 N, R 1 E, W.M.  
CITY OF VANCOUVER, CLARK COUNTY, WASHINGTON  
JULY, 2009  
SHEET 8 OF 14



- LEGEND**
- 3205 ● FOUND OR SET MONUMENT, AS NOTED IN CONTROL TABLE
  - AC ALUMINUM CAP
  - BC BRASS CAP
  - CC CONCRETE RIVER CROSSING
  - IR IRON ROD
  - W/ WITH
  - YPC YELLOW PLASTIC CAP
  - SR STATE ROUTE

POINT NUMBER	NORTHING	EASTING	ELEVATION	DESCRIPTION
2102	116871.210	1086397.027	142.080	FD 2"IC - 5/8" 1.8" 2"
2103	116871.210	1086397.027	95.738	SET 5/8" IR W/2" AC - CIRC CONTROL 2102
2104	116871.210	1086397.027	106.924	SET 5/8" IR W/2" AC - CIRC CONTROL 2102
2105	116871.210	1086397.027	106.924	SET 5/8" IR W/2" AC - CIRC CONTROL 2102
2106	116871.210	1086397.027	106.924	SET 5/8" IR W/2" AC - CIRC CONTROL 2102
2107	116871.210	1086397.027	113.644	SET 5/8" IR W/2" AC - CIRC CONTROL 2102
2108	116871.210	1086397.027	123.094	SET 5/8" IR W/2" AC - CIRC CONTROL 2102
2109	116871.210	1086397.027	131.945	SET 5/8" IR W/2" AC - CIRC CONTROL 2102
2110	116871.210	1086397.027	139.759	SET 5/8" IR W/2" AC - CIRC CONTROL 2102
2111	116871.210	1086397.027	147.573	SET 5/8" IR W/2" AC - CIRC CONTROL 2102
2112	116871.210	1086397.027	155.387	SET 5/8" IR W/2" AC - CIRC CONTROL 2102
2113	116871.210	1086397.027	163.201	SET 5/8" IR W/2" AC - CIRC CONTROL 2102
2114	116871.210	1086397.027	171.015	SET 5/8" IR W/2" AC - CIRC CONTROL 2102
2115	116871.210	1086397.027	178.829	SET 5/8" IR W/2" AC - CIRC CONTROL 2102
2116	116871.210	1086397.027	186.643	SET 5/8" IR W/2" AC - CIRC CONTROL 2102
2117	116871.210	1086397.027	194.457	SET 5/8" IR W/2" AC - CIRC CONTROL 2102
2118	116871.210	1086397.027	202.271	SET 5/8" IR W/2" AC - CIRC CONTROL 2102
2119	116871.210	1086397.027	210.085	SET 5/8" IR W/2" AC - CIRC CONTROL 2102
2120	116871.210	1086397.027	217.899	SET 5/8" IR W/2" AC - CIRC CONTROL 2102
2121	116871.210	1086397.027	225.713	SET 5/8" IR W/2" AC - CIRC CONTROL 2102
2122	116871.210	1086397.027	233.527	SET 5/8" IR W/2" AC - CIRC CONTROL 2102
2123	116871.210	1086397.027	241.341	SET 5/8" IR W/2" AC - CIRC CONTROL 2102
2124	116871.210	1086397.027	249.155	SET 5/8" IR W/2" AC - CIRC CONTROL 2102
2125	116871.210	1086397.027	256.969	SET 5/8" IR W/2" AC - CIRC CONTROL 2102
2126	116871.210	1086397.027	264.783	SET 5/8" IR W/2" AC - CIRC CONTROL 2102
2127	116871.210	1086397.027	272.597	SET 5/8" IR W/2" AC - CIRC CONTROL 2102
2128	116871.210	1086397.027	280.411	SET 5/8" IR W/2" AC - CIRC CONTROL 2102
2129	116871.210	1086397.027	288.225	SET 5/8" IR W/2" AC - CIRC CONTROL 2102
2130	116871.210	1086397.027	296.039	SET 5/8" IR W/2" AC - CIRC CONTROL 2102
2131	116871.210	1086397.027	303.853	SET 5/8" IR W/2" AC - CIRC CONTROL 2102
2132	116871.210	1086397.027	311.667	SET 5/8" IR W/2" AC - CIRC CONTROL 2102
2133	116871.210	1086397.027	319.481	SET 5/8" IR W/2" AC - CIRC CONTROL 2102
2134	116871.210	1086397.027	327.295	SET 5/8" IR W/2" AC - CIRC CONTROL 2102
2135	116871.210	1086397.027	335.109	SET 5/8" IR W/2" AC - CIRC CONTROL 2102
2136	116871.210	1086397.027	342.923	SET 5/8" IR W/2" AC - CIRC CONTROL 2102
2137	116871.210	1086397.027	350.737	SET 5/8" IR W/2" AC - CIRC CONTROL 2102
2138	116871.210	1086397.027	358.551	SET 5/8" IR W/2" AC - CIRC CONTROL 2102
2139	116871.210	1086397.027	366.365	SET 5/8" IR W/2" AC - CIRC CONTROL 2102
2140	116871.210	1086397.027	374.179	SET 5/8" IR W/2" AC - CIRC CONTROL 2102
2141	116871.210	1086397.027	381.993	SET 5/8" IR W/2" AC - CIRC CONTROL 2102
2142	116871.210	1086397.027	389.807	SET 5/8" IR W/2" AC - CIRC CONTROL 2102
2143	116871.210	1086397.027	397.621	SET 5/8" IR W/2" AC - CIRC CONTROL 2102
2144	116871.210	1086397.027	405.435	SET 5/8" IR W/2" AC - CIRC CONTROL 2102
2145	116871.210	1086397.027	413.249	SET 5/8" IR W/2" AC - CIRC CONTROL 2102
2146	116871.210	1086397.027	421.063	SET 5/8" IR W/2" AC - CIRC CONTROL 2102
2147	116871.210	1086397.027	428.877	SET 5/8" IR W/2" AC - CIRC CONTROL 2102
2148	116871.210	1086397.027	436.691	SET 5/8" IR W/2" AC - CIRC CONTROL 2102
2149	116871.210	1086397.027	444.505	SET 5/8" IR W/2" AC - CIRC CONTROL 2102
2150	116871.210	1086397.027	452.319	SET 5/8" IR W/2" AC - CIRC CONTROL 2102
2151	116871.210	1086397.027	460.133	SET 5/8" IR W/2" AC - CIRC CONTROL 2102
2152	116871.210	1086397.027	467.947	SET 5/8" IR W/2" AC - CIRC CONTROL 2102
2153	116871.210	1086397.027	475.761	SET 5/8" IR W/2" AC - CIRC CONTROL 2102
2154	116871.210	1086397.027	483.575	SET 5/8" IR W/2" AC - CIRC CONTROL 2102
2155	116871.210	1086397.027	491.389	SET 5/8" IR W/2" AC - CIRC CONTROL 2102
2156	116871.210	1086397.027	499.203	SET 5/8" IR W/2" AC - CIRC CONTROL 2102
2157	116871.210	1086397.027	507.017	SET 5/8" IR W/2" AC - CIRC CONTROL 2102
2158	116871.210	1086397.027	514.831	SET 5/8" IR W/2" AC - CIRC CONTROL 2102
2159	116871.210	1086397.027	522.645	SET 5/8" IR W/2" AC - CIRC CONTROL 2102
2160	116871.210	1086397.027	530.459	SET 5/8" IR W/2" AC - CIRC CONTROL 2102
2161	116871.210	1086397.027	538.273	SET 5/8" IR W/2" AC - CIRC CONTROL 2102
2162	116871.210	1086397.027	546.087	SET 5/8" IR W/2" AC - CIRC CONTROL 2102
2163	116871.210	1086397.027	553.901	SET 5/8" IR W/2" AC - CIRC CONTROL 2102
2164	116871.210	1086397.027	561.715	SET 5/8" IR W/2" AC - CIRC CONTROL 2102
2165	116871.210	1086397.027	569.529	SET 5/8" IR W/2" AC - CIRC CONTROL 2102
2166	116871.210	1086397.027	577.343	SET 5/8" IR W/2" AC - CIRC CONTROL 2102
2167	116871.210	1086397.027	585.157	SET 5/8" IR W/2" AC - CIRC CONTROL 2102
2168	116871.210	1086397.027	592.971	SET 5/8" IR W/2" AC - CIRC CONTROL 2102
2169	116871.210	1086397.027	600.785	SET 5/8" IR W/2" AC - CIRC CONTROL 2102
2170	116871.210	1086397.027	608.599	SET 5/8" IR W/2" AC - CIRC CONTROL 2102
2171	116871.210	1086397.027	616.413	SET 5/8" IR W/2" AC - CIRC CONTROL 2102
2172	116871.210	1086397.027	624.227	SET 5/8" IR W/2" AC - CIRC CONTROL 2102
2173	116871.210	1086397.027	632.041	SET 5/8" IR W/2" AC - CIRC CONTROL 2102
2174	116871.210	1086397.027	639.855	SET 5/8" IR W/2" AC - CIRC CONTROL 2102
2175	116871.210	1086397.027	647.669	SET 5/8" IR W/2" AC - CIRC CONTROL 2102
2176	116871.210	1086397.027	655.483	SET 5/8" IR W/2" AC - CIRC CONTROL 2102
2177	116871.210	1086397.027	663.297	SET 5/8" IR W/2" AC - CIRC CONTROL 2102
2178	116871.210	1086397.027	671.111	SET 5/8" IR W/2" AC - CIRC CONTROL 2102
2179	116871.210	1086397.027	678.925	SET 5/8" IR W/2" AC - CIRC CONTROL 2102
2180	116871.210	1086397.027	686.739	SET 5/8" IR W/2" AC - CIRC CONTROL 2102
2181	116871.210	1086397.027	694.553	SET 5/8" IR W/2" AC - CIRC CONTROL 2102
2182	116871.210	1086397.027	702.367	SET 5/8" IR W/2" AC - CIRC CONTROL 2102
2183	116871.210	1086397.027	710.181	SET 5/8" IR W/2" AC - CIRC CONTROL 2102
2184	116871.210	1086397.027	717.995	SET 5/8" IR W/2" AC - CIRC CONTROL 2102
2185	116871.210	1086397.027	725.809	SET 5/8" IR W/2" AC - CIRC CONTROL 2102
2186	116871.210	1086397.027	733.623	SET 5/8" IR W/2" AC - CIRC CONTROL 2102
2187	116871.210	1086397.027	741.437	SET 5/8" IR W/2" AC - CIRC CONTROL 2102
2188	116871.210	1086397.027	749.251	SET 5/8" IR W/2" AC - CIRC CONTROL 2102
2189	116871.210	1086397.027	757.065	SET 5/8" IR W/2" AC - CIRC CONTROL 2102
2190	116871.210	1086397.027	764.879	SET 5/8" IR W/2" AC - CIRC CONTROL 2102
2191	116871.210	1086397.027	772.693	SET 5/8" IR W/2" AC - CIRC CONTROL 2102
2192	116871.210	1086397.027	780.507	SET 5/8" IR W/2" AC - CIRC CONTROL 2102
2193	116871.210	1086397.027	788.321	SET 5/8" IR W/2" AC - CIRC CONTROL 2102
2194	116871.210	1086397.027	796.135	SET 5/8" IR W/2" AC - CIRC CONTROL 2102
2195	116871.210	1086397.027	803.949	SET 5/8" IR W/2" AC - CIRC CONTROL 2102
2196	116871.210	1086397.027	811.763	SET 5/8" IR W/2" AC - CIRC CONTROL 2102
2197	116871.210	1086397.027	819.577	SET 5/8" IR W/2" AC - CIRC CONTROL 2102
2198	116871.210	1086397.027	827.391	SET 5/8" IR W/2" AC - CIRC CONTROL 2102
2199	116871.210	1086397.027	835.205	SET 5/8" IR W/2" AC - CIRC CONTROL 2102
2200	116871.210	1086397.027	843.019	SET 5/8" IR W/2" AC - CIRC CONTROL 2102
2201	116871.210	1086397.027	850.833	SET 5/8" IR W/2" AC - CIRC CONTROL 2102
2202	116871.210	1086397.027	858.647	SET 5/8" IR W/2" AC - CIRC CONTROL 2102
2203	116871.210	1086397.027	866.461	SET 5/8" IR W/2" AC - CIRC CONTROL 2102
2204	116871.210	1086397.027	874.275	SET 5/8" IR W/2" AC - CIRC CONTROL 2102
2205	116871.210	1086397.027	882.089	SET 5/8" IR W/2" AC - CIRC CONTROL 2102
2206	116871.210	1086397.027	889.903	SET 5/8" IR W/2" AC - CIRC CONTROL 2102
2207	116871.210	1086397.027	897.717	SET 5/8" IR W/2" AC - CIRC CONTROL 2102
2208	116871.210	1086397.027	905.531	SET 5/8" IR W/2" AC - CIRC CONTROL 2102
2209	116871.210	1086397.027	913.345	SET 5/8" IR W/2" AC - CIRC CONTROL 2102
2210	116871.210	1086397.027	921.159	SET 5/8" IR W/2" AC - CIRC CONTROL 2102
2211	116871.210	1086397.027	928.973	SET 5/8" IR W/2" AC - CIRC CONTROL 2102
2212	116871.210	1086397.027	936.787	SET 5/8" IR W/2" AC - CIRC CONTROL 2102
2213	116871.210	1086397.027	944.601	SET 5/8" IR W/2" AC - CIRC CONTROL 2102
2214	116871.210	1086397.027	952.415	SET 5/8" IR W/2" AC - CIRC CONTROL 2102
2215	116871.210	1086397.027	960.229	SET 5/8" IR W/2" AC - CIRC CONTROL 2102
2216	116871.210	1086397.027	968.043	SET 5/8" IR W/2" AC - CIRC CONTROL 2102
2217	116871.210	1086397.027	975.857	SET 5/8" IR W/2" AC - CIRC CONTROL 2102
2218	116871.210	1086397.027	983.671	SET 5/8" IR W/2" AC - CIRC CONTROL 2102
2219	116871.210	1086397.027	991.485	SET 5/8" IR W/2" AC - CIRC CONTROL 2102
2220	116871.210	1086397.027	999.299	SET 5/8" IR W/2" AC - CIRC CONTROL 2102
2221	116871.210	1086397.027	1007.113	SET 5/8" IR W/2" AC - CIRC CONTROL 2102
2222	116871.210	1086397.027	1014.927	SET 5/8" IR W/2" AC - CIRC CONTROL 2102
2223	116871.210	1086397.027	1022.741	SET 5/8" IR W/2" AC - CIRC CONTROL 2102
2224	116871.210	1086397.027	1030.555	SET 5/8" IR W/2" AC - CIRC CONTROL 2102
2225	116871.210	1086397.027	1038.369	SET 5/8" IR W/2" AC - CIRC CONTROL 2102
2226	116871.210	1086397.027	1046.183	SET 5/8" IR W/2" AC - CIRC CONTROL 2102
2227	116871.210	1086397.027	1053.	



**LEGEND**

- 3205 ● FOUND OR SET MONUMENT, AS NOTED IN CONTROL TABLE
- AC ALUMINUM CAP
- BC BRASS CAP
- CRC COLUMBIA RIVER CROSSING
- IR IRON ROD
- W WITH
- YFC YELLOW PLASTIC CAP
- SR STATE ROUTE

POINT NUMBER	NORTHING	EASTING	ELEVATION	DESCRIPTION
2105	117324.628	1084889.038	139.756	SET 5/8" R W/ZAC - CRC CONTROL 2105
2115	117406.113	1087007.442	146.495	SET 5/8" R W/ZAC - CRC CONTROL 2115
2120	117526.009	1091740.269	156.002	SET 5/8" R W/ZAC - CRC CONTROL 2120
2131	117599.749	1092706.433	152.430	SET 5/8" R W/ZAC - CRC CONTROL 2131
2132	118055.083	1087206.433	160.390	SET 5/8" R W/ZAC - CRC CONTROL 2132
2133	118398.720	1087267.933	164.971	SET 5/8" R W/ZAC - CRC CONTROL 2133
2140	118199.611	1087408.203	164.971	SET 5/8" R W/ZAC - CRC CONTROL 2140
2150	118681.866	1087286.306	174.723	SET 5/8" R W/ZAC - CRC CONTROL 2150
2155	119044.242	1087288.914	178.912	SET 5/8" R W/ZAC - CRC CONTROL 2155
2160	119213.158	1087489.122	180.034	SET 5/8" R W/ZAC - CRC CONTROL 2160
2165	119384.703	1087320.482	175.456	SET 1.1/8" RC - CRC CONTROL 2165
2175	117203.012	1085549.316	155.311	SET 1.1/8" RC - CRC CONTROL 2175
2180	117286.418	1089226.062	155.311	SET 1.1/8" RC - CRC CONTROL 2180
2185	117286.418	1089226.062	155.311	SET 1.1/8" RC - CRC CONTROL 2185
2190	118926.102	1087048.872	190.251	SET 1.1/2" AC - CRC CONTROL 2190
VC3056				SEE SHEET 8 OF 14
VC3056				SEE SHEET 10 OF 14



**SURVEY CONTROL DRAWING**  
 LOCATED IN  
 PORTIONS OF SECTIONS 14, 15, 22, 23, 26 AND 27,  
 THE AMOS SHORT DLC 51  
 AND THE  
 VANCOUVER MILITARY RESERVATION  
 T 2 N, R 1 E, W.M.  
 CITY OF VANCOUVER, CLARK COUNTY, WASHINGTON  
 JULY, 2009  
 SHEET 9 OF 14



**DAVID EVANS AND ASSOCIATES INC.**  
 2100 Southview Parkway  
 Seattle, WA 98148  
 Phone: 206.223.4660

**Washington State Department of Transportation**  
 Checked by: KLM  
 Drawn by: LMCA  
 DCN NAME: \_\_\_\_\_

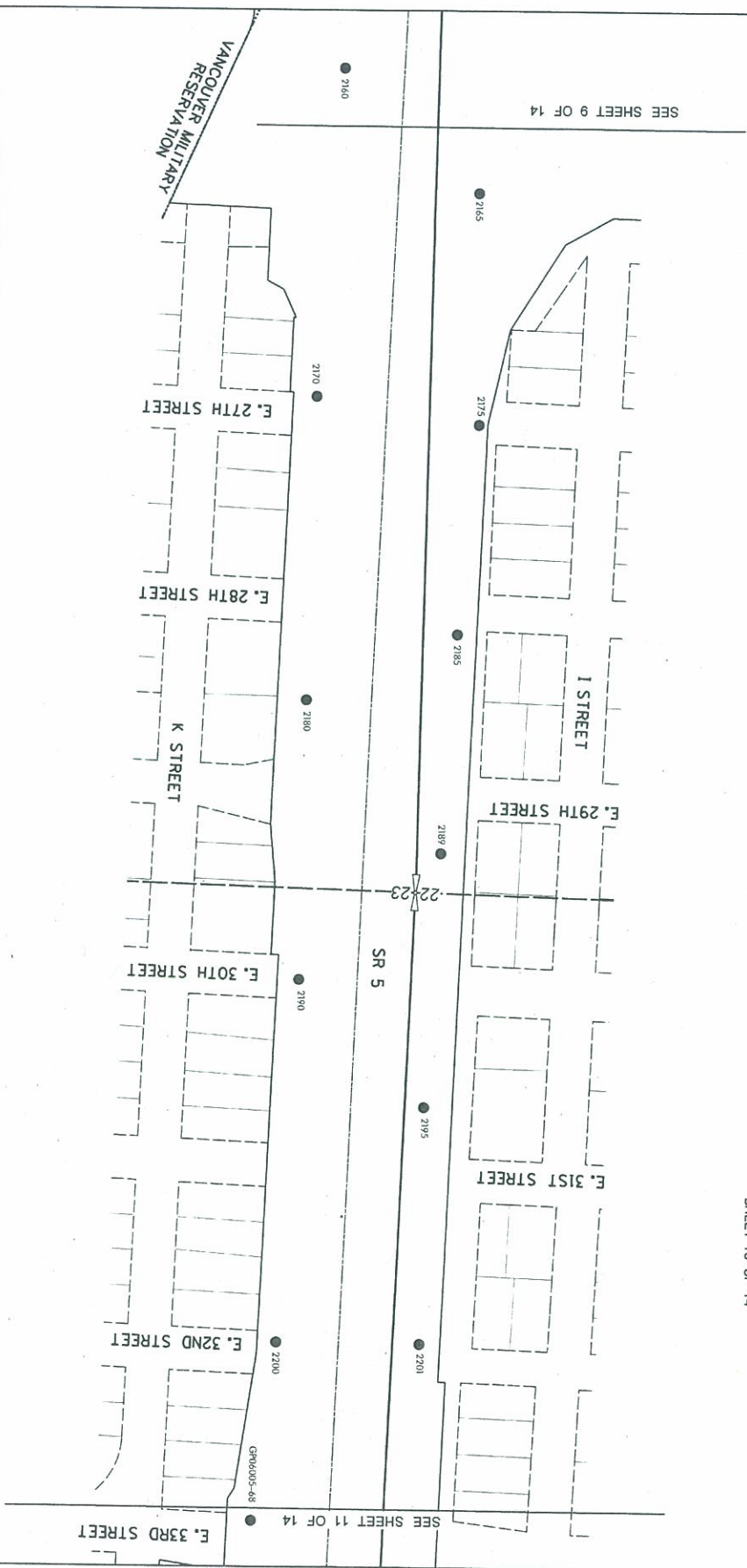
**LEGEND**

- 3206 ● FOUND OR SET MONUMENT AS NOTED IN CONTROL TABLE
- AC ALUMINUM CAP
- BC BRASS CAP
- CC COLUMBIA RIVER CROSSING
- CR CEMENT ROD
- WC WOOD WITH ROD
- YPC YELLOW PLASTIC CAP
- SR STATE ROUTE



**SURVEY CONTROL DRAWING**

LOCATED IN  
 PORTIONS OF SECTIONS 14, 15, 22, 23, 26 AND 27,  
 THE AMOS SHORT DLC 51  
 AND THE  
 VANCOUVER MILITARY RESERVATION  
 T 2 N., R 1 E., W.M.  
 CITY OF VANCOUVER, CLARK COUNTY, WASHINGTON  
 JULY, 2009  
 SHEET 10 OF 14



POINT NUMBER	NORTHING	EASTING	ELEVATION	DESCRIPTION
2160	11924.403	108720.482	112.871	SET 5/8" IR W/2" AC - CIRC CONTROL 2160
2165	11924.403	108720.482	112.871	SET 5/8" IR W/2" AC - CIRC CONTROL 2165
2170	11966.544	108727.117	189.134	SET 5/8" IR W/2" AC - CIRC CONTROL 2170
2175	119703.400	108729.442	189.050	SET 5/8" IR W/2" AC - CIRC CONTROL 2175
2180	119605.176	108731.597	192.626	SET 5/8" IR W/2" AC - CIRC CONTROL 2180
2185	120276.542	108734.748	198.458	SET 5/8" IR W/2" AC - CIRC CONTROL 2185
2189	120472.303	108737.893	193.212	SET 5/8" IR W/2" AC - CIRC CONTROL 2189
2195	120642.074	108744.871	197.996	SET 5/8" IR W/2" AC - CIRC CONTROL 2195
2200	120924.488	108745.238	206.773	SET 5/8" IR W/2" AC - CIRC CONTROL 2200
2201	120924.488	108745.238	217.817	SET 3/4" IR W/2" AC - CIRC CONTROL 2201
GRP6005-48	12129.489	108759.935	217.817	FD 3/4" - GRP6005-48 1997



**DAVID EVANS AND ASSOCIATES, INC.**  
 2100 Southeast River Parkway  
 Phone: 509.223.8693

**Washington State Department of Transportation**

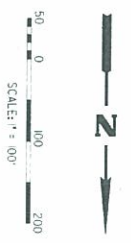
CALC BY: KIM  
 CHECKED BY: KSW  
 DRAWN BY: LMCA  
 DGN NAME: \_\_\_\_\_

POINT NUMBER	NORTHING	EASTING	ELEVATION	DESCRIPTION
2202	121371.27	1087375.656	202.317	SET 5/8" R W/7" AC - CONC CONTROL 2202-
2206	121508.608	1087440.629	202.421	SET 5/8" R W/7" AC - CONC CONTROL 2206-
2210	121864.566	1087605.254	200.851	SET 5/8" R W/7" AC - CONC CONTROL 2210-
2215	122008.451	1087459.597	200.970	SET 5/8" R W/7" AC - CONC CONTROL 2215-
2220	122597.800	1087400.208	198.747	SET 5/8" R W/7" AC - CONC CONTROL 2220-
2225	122742.946	1087424.891	198.500	SET 5/8" R W/7" AC - CONC CONTROL 2225-
2230	122838.478	1087616.484	180.530	SET 5/8" R W/7" AC - CONC CONTROL 2230-
2235	122748.617	1087465.704	187.556	SET 5/8" R W/7" AC - CONC CONTROL 2235-
2240	123197.884	1087595.340	168.157	SET 5/8" R W/7" AC - CONC CONTROL 2240-
2400	122482.551	1087788.409	192.964	SET 5/8" R W/7" AC - CONC CONTROL 2400-
2405	122807.533	1088174.797	193.270	SET 5/8" R W/7" AC - CONC CONTROL 2405-
2410	122288.551	1088289.971	184.723	SET 5/8" R W/7" AC - CONC CONTROL 2410-
2415	123444.525	1087651.974	135.901	SET 5/8" R W/7" AC - CONC CONTROL 2415-
2418	123244.450	1087651.974	135.901	SET 5/8" R W/7" AC - CONC CONTROL 2418-
2419	123444.525	1088533.712	177.616	SET 5/8" R W/7" AC - CONC CONTROL 2419-
2415	123444.525	1088533.712	177.616	SET 5/8" R W/7" AC - CONC CONTROL 2415-
GR06005-23	122988.560	1087484.221	201.124	FD 3" RC - GR06005-23
GR06005-48	121972.819	1087595.085	217.817	FD 3" RC - GR06005-48 1977-

- LEGEND**
- 3205 ● FOUND OR SET MONUMENT, AS NOTED IN CONTROL TABLE
  - AC ALUMINUM CAP
  - BC BRASS CAP
  - CRC COLUMBIA RIVER CROSSING
  - IR IRON ROD
  - W/ WITH
  - Y/C YELLOW PLASTIC CAP
  - SR STATE ROUTE



**SURVEY CONTROL DRAWING**  
 LOCATED IN  
 PORTIONS OF SECTIONS 14, 15, 22, 23, 26 AND 27,  
 THE AMOS SHORT DLC 51  
 AND THE  
 VANCOUVER MILITARY RESERVATION  
 T 2 N, R 1 E, W.M.  
 CITY OF VANCOUVER, CLARK COUNTY, WASHINGTON  
 JULY, 2009  
 SHEET 11 OF 14

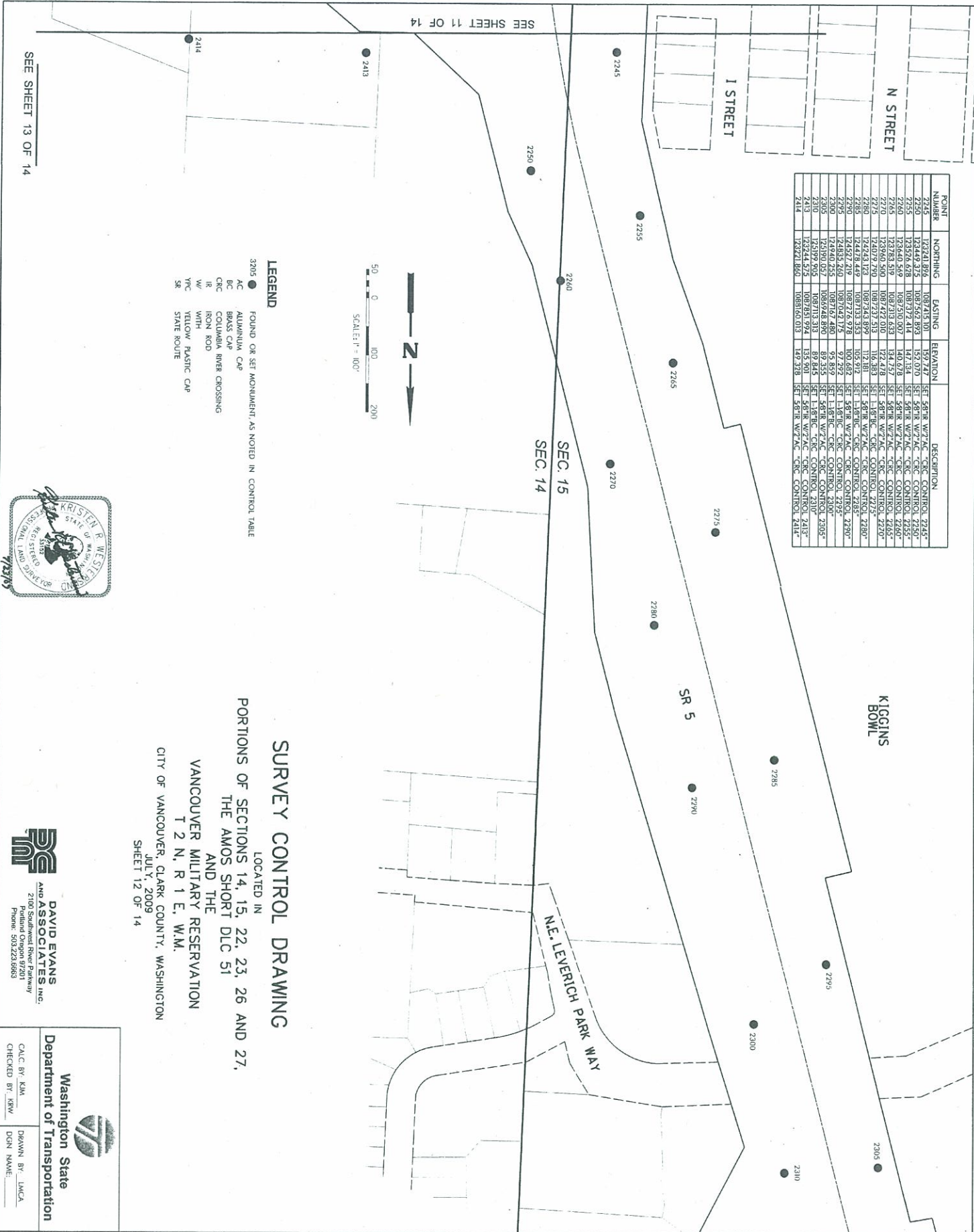


DAVID EVANS  
 AND ASSOCIATES, INC.  
 2100 Southwest River Parkway  
 Portland, Oregon 97201  
 Phone: 503.223.8663

Washington State  
 Department of Transportation

Calc. BY: UAH  
 Drawn BY: LMCA  
 Checked BY: KRW  
 DCN NAME: \_\_\_\_\_

POINT NUMBER	NORthing	EASTing	ELEVATION	DESCRIPTION
2245	133241.892	108723.100	157.717	SET 58"R W/7"AC -CIRC CONTROL 2245"
2246	133241.892	108723.100	157.717	SET 58"R W/7"AC -CIRC CONTROL 2246"
2247	133241.892	108723.100	157.717	SET 58"R W/7"AC -CIRC CONTROL 2247"
2248	133241.892	108723.100	157.717	SET 58"R W/7"AC -CIRC CONTROL 2248"
2249	133241.892	108723.100	157.717	SET 58"R W/7"AC -CIRC CONTROL 2249"
2250	133241.892	108723.100	157.717	SET 58"R W/7"AC -CIRC CONTROL 2250"
2251	133241.892	108723.100	157.717	SET 58"R W/7"AC -CIRC CONTROL 2251"
2252	133241.892	108723.100	157.717	SET 58"R W/7"AC -CIRC CONTROL 2252"
2253	133241.892	108723.100	157.717	SET 58"R W/7"AC -CIRC CONTROL 2253"
2254	133241.892	108723.100	157.717	SET 58"R W/7"AC -CIRC CONTROL 2254"
2255	133241.892	108723.100	157.717	SET 58"R W/7"AC -CIRC CONTROL 2255"
2256	133241.892	108723.100	157.717	SET 58"R W/7"AC -CIRC CONTROL 2256"
2257	133241.892	108723.100	157.717	SET 58"R W/7"AC -CIRC CONTROL 2257"
2258	133241.892	108723.100	157.717	SET 58"R W/7"AC -CIRC CONTROL 2258"
2259	133241.892	108723.100	157.717	SET 58"R W/7"AC -CIRC CONTROL 2259"
2260	133241.892	108723.100	157.717	SET 58"R W/7"AC -CIRC CONTROL 2260"
2261	133241.892	108723.100	157.717	SET 58"R W/7"AC -CIRC CONTROL 2261"
2262	133241.892	108723.100	157.717	SET 58"R W/7"AC -CIRC CONTROL 2262"
2263	133241.892	108723.100	157.717	SET 58"R W/7"AC -CIRC CONTROL 2263"
2264	133241.892	108723.100	157.717	SET 58"R W/7"AC -CIRC CONTROL 2264"
2265	133241.892	108723.100	157.717	SET 58"R W/7"AC -CIRC CONTROL 2265"
2266	133241.892	108723.100	157.717	SET 58"R W/7"AC -CIRC CONTROL 2266"
2267	133241.892	108723.100	157.717	SET 58"R W/7"AC -CIRC CONTROL 2267"
2268	133241.892	108723.100	157.717	SET 58"R W/7"AC -CIRC CONTROL 2268"
2269	133241.892	108723.100	157.717	SET 58"R W/7"AC -CIRC CONTROL 2269"
2270	133241.892	108723.100	157.717	SET 58"R W/7"AC -CIRC CONTROL 2270"
2271	133241.892	108723.100	157.717	SET 58"R W/7"AC -CIRC CONTROL 2271"
2272	133241.892	108723.100	157.717	SET 58"R W/7"AC -CIRC CONTROL 2272"
2273	133241.892	108723.100	157.717	SET 58"R W/7"AC -CIRC CONTROL 2273"
2274	133241.892	108723.100	157.717	SET 58"R W/7"AC -CIRC CONTROL 2274"
2275	133241.892	108723.100	157.717	SET 58"R W/7"AC -CIRC CONTROL 2275"
2276	133241.892	108723.100	157.717	SET 58"R W/7"AC -CIRC CONTROL 2276"
2277	133241.892	108723.100	157.717	SET 58"R W/7"AC -CIRC CONTROL 2277"
2278	133241.892	108723.100	157.717	SET 58"R W/7"AC -CIRC CONTROL 2278"
2279	133241.892	108723.100	157.717	SET 58"R W/7"AC -CIRC CONTROL 2279"
2280	133241.892	108723.100	157.717	SET 58"R W/7"AC -CIRC CONTROL 2280"
2281	133241.892	108723.100	157.717	SET 58"R W/7"AC -CIRC CONTROL 2281"
2282	133241.892	108723.100	157.717	SET 58"R W/7"AC -CIRC CONTROL 2282"
2283	133241.892	108723.100	157.717	SET 58"R W/7"AC -CIRC CONTROL 2283"
2284	133241.892	108723.100	157.717	SET 58"R W/7"AC -CIRC CONTROL 2284"
2285	133241.892	108723.100	157.717	SET 58"R W/7"AC -CIRC CONTROL 2285"
2286	133241.892	108723.100	157.717	SET 58"R W/7"AC -CIRC CONTROL 2286"
2287	133241.892	108723.100	157.717	SET 58"R W/7"AC -CIRC CONTROL 2287"
2288	133241.892	108723.100	157.717	SET 58"R W/7"AC -CIRC CONTROL 2288"
2289	133241.892	108723.100	157.717	SET 58"R W/7"AC -CIRC CONTROL 2289"
2290	133241.892	108723.100	157.717	SET 58"R W/7"AC -CIRC CONTROL 2290"
2291	133241.892	108723.100	157.717	SET 58"R W/7"AC -CIRC CONTROL 2291"
2292	133241.892	108723.100	157.717	SET 58"R W/7"AC -CIRC CONTROL 2292"
2293	133241.892	108723.100	157.717	SET 58"R W/7"AC -CIRC CONTROL 2293"
2294	133241.892	108723.100	157.717	SET 58"R W/7"AC -CIRC CONTROL 2294"
2295	133241.892	108723.100	157.717	SET 58"R W/7"AC -CIRC CONTROL 2295"
2296	133241.892	108723.100	157.717	SET 58"R W/7"AC -CIRC CONTROL 2296"
2297	133241.892	108723.100	157.717	SET 58"R W/7"AC -CIRC CONTROL 2297"
2298	133241.892	108723.100	157.717	SET 58"R W/7"AC -CIRC CONTROL 2298"
2299	133241.892	108723.100	157.717	SET 58"R W/7"AC -CIRC CONTROL 2299"
2300	133241.892	108723.100	157.717	SET 58"R W/7"AC -CIRC CONTROL 2300"
2301	133241.892	108723.100	157.717	SET 58"R W/7"AC -CIRC CONTROL 2301"
2302	133241.892	108723.100	157.717	SET 58"R W/7"AC -CIRC CONTROL 2302"
2303	133241.892	108723.100	157.717	SET 58"R W/7"AC -CIRC CONTROL 2303"
2304	133241.892	108723.100	157.717	SET 58"R W/7"AC -CIRC CONTROL 2304"
2305	133241.892	108723.100	157.717	SET 58"R W/7"AC -CIRC CONTROL 2305"
2306	133241.892	108723.100	157.717	SET 58"R W/7"AC -CIRC CONTROL 2306"
2307	133241.892	108723.100	157.717	SET 58"R W/7"AC -CIRC CONTROL 2307"
2308	133241.892	108723.100	157.717	SET 58"R W/7"AC -CIRC CONTROL 2308"
2309	133241.892	108723.100	157.717	SET 58"R W/7"AC -CIRC CONTROL 2309"
2310	133241.892	108723.100	157.717	SET 58"R W/7"AC -CIRC CONTROL 2310"
2311	133241.892	108723.100	157.717	SET 58"R W/7"AC -CIRC CONTROL 2311"
2312	133241.892	108723.100	157.717	SET 58"R W/7"AC -CIRC CONTROL 2312"
2313	133241.892	108723.100	157.717	SET 58"R W/7"AC -CIRC CONTROL 2313"
2314	133241.892	108723.100	157.717	SET 58"R W/7"AC -CIRC CONTROL 2314"
2315	133241.892	108723.100	157.717	SET 58"R W/7"AC -CIRC CONTROL 2315"



**LEGEND**  
 3205 ● FOUND OR SET MONUMENT, AS NOTED IN CONTROL TABLE  
 AC ALUMINUM CAP  
 BC BRASS CAP  
 IR IRON ROD  
 W/ WOOD  
 YPC YELLOW PLASTIC CAP  
 SR STATE ROUTE

**SURVEY CONTROL DRAWING**

LOCATED IN  
 PORTIONS OF SECTIONS 14, 15, 22, 23, 26 AND 27,  
 THE AMOS SHORT DLC 51  
 AND THE  
 VANCOUVER MILITARY RESERVATION  
 T 2 N, R 1 E, W.M.  
 CITY OF VANCOUVER, CLARK COUNTY, WASHINGTON  
 JULY, 2009  
 SHEET 12 OF 14



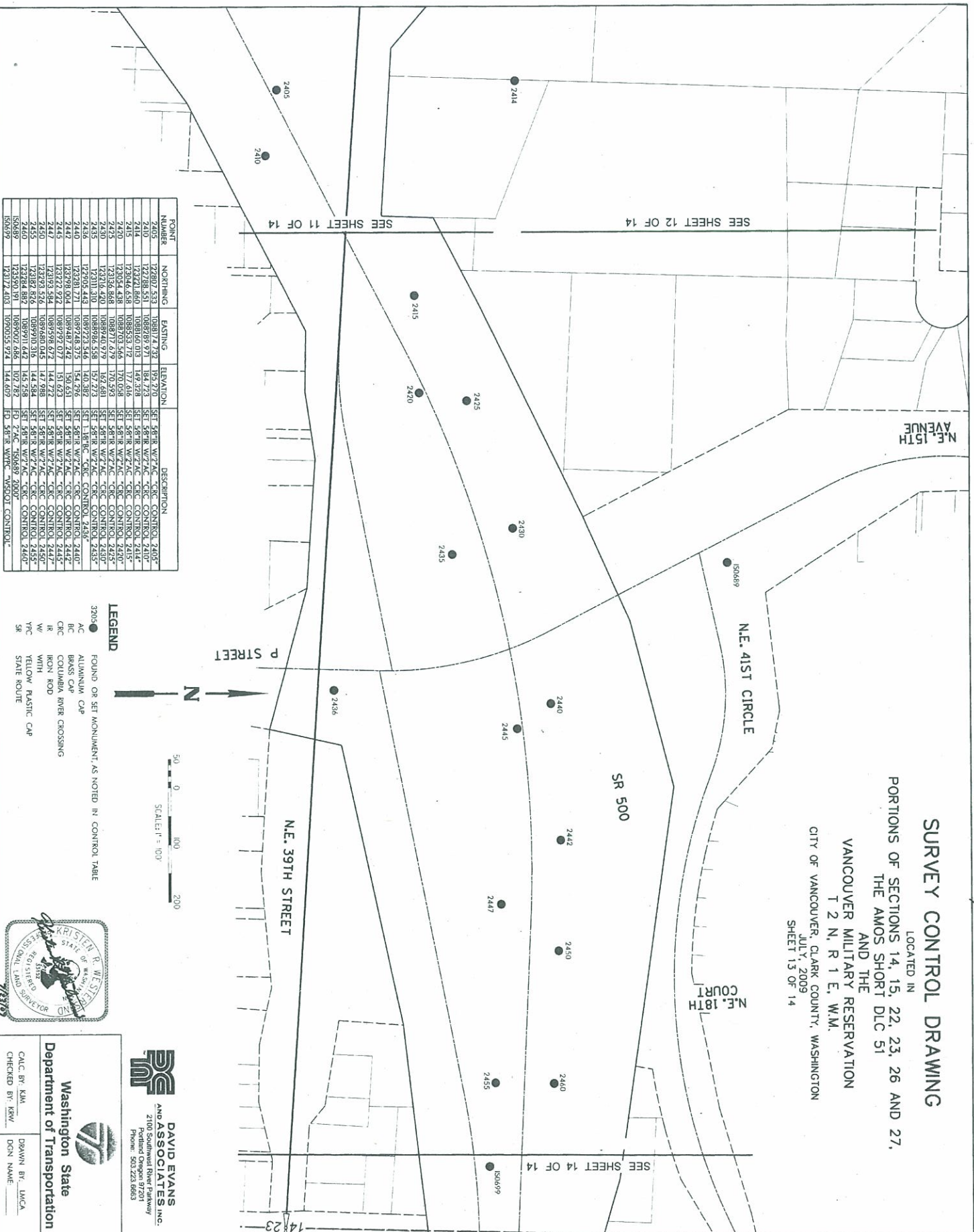
**DAVID EVANS AND ASSOCIATES INC.**  
 2100 Southland River Parkway  
 Portland Oregon 97201  
 Phone: 503.223.6863

**Washington State Department of Transportation**

CALC BY: KJM  
 CHECKED BY: KRW  
 DRAWN BY: LMCA  
 DGN NAME: \_\_\_\_\_

### SURVEY CONTROL DRAWING

LOCATED IN  
 PORTIONS OF SECTIONS 14, 15, 22, 23, 26 AND 27,  
 THE AMOS SHORT DLC 51  
 AND THE  
 VANCOUVER MILITARY RESERVATION  
 T 2 N, R 1 E, W.M.  
 CITY OF VANCOUVER, CLARK COUNTY, WASHINGTON  
 JULY, 2009  
 SHEET 13 OF 14



POINT NUMBER	NORTHING	EASTING	ELEVATION	DESCRIPTION
2405	12308.531	1089289.971	184.723	SET 58°18' W/7°42' -CRC CONTROL 2405*
2410	12321.860	1089160.013	149.378	SET 58°18' W/7°42' -CRC CONTROL 2410*
2414	12304.438	1089533.719	177.616	SET 58°18' W/7°42' -CRC CONTROL 2414*
2415	12304.438	1089703.566	170.058	SET 58°18' W/7°42' -CRC CONTROL 2415*
2420	12336.583	1089940.979	102.481	SET 58°18' W/7°42' -CRC CONTROL 2420*
2425	12311.310	1089723.546	140.382	SET 1.18° RC -CRC CONTROL 2425*
2430	12328.171	1089748.375	154.796	SET 58°18' W/7°42' -CRC CONTROL 2430*
2435	12328.171	1089748.375	154.796	SET 58°18' W/7°42' -CRC CONTROL 2435*
2440	12328.171	1089748.375	154.796	SET 58°18' W/7°42' -CRC CONTROL 2440*
2442	12328.171	1089748.375	154.796	SET 58°18' W/7°42' -CRC CONTROL 2442*
2445	12328.171	1089748.375	154.796	SET 58°18' W/7°42' -CRC CONTROL 2445*
2447	123193.584	1089598.672	144.772	SET 58°18' W/7°42' -CRC CONTROL 2447*
2450	123293.576	1089680.045	147.988	SET 58°18' W/7°42' -CRC CONTROL 2450*
2455	123182.826	1089910.316	144.584	SET 58°18' W/7°42' -CRC CONTROL 2455*
2486	123284.882	1089701.442	145.538	SET 58°18' W/7°42' -CRC CONTROL 2486*
150699	123172.403	1090055.924	144.609	ID 58°18' W/7°42' -MSSOIL CONTROL



#### LEGEND

- 3205 ● FOUND OR SET MONUMENT, AS NOTED IN CONTROL TABLE
- AC ALUMINUM CAP
- BC BRASS CAP
- CRC COLUMBIA RIVER CROSSING
- IR IRON ROD
- W WITH
- YPC YELLOW PLASTIC CAP
- SR STATE ROUTE



**DAVID EVANS  
AND ASSOCIATES, INC.**  
2100 Southview River Parkway  
Portland Oregon 97201  
Phone: 503.223.0683

**Washington State  
Department of Transportation**

CALC. BY: KJM  
CHECKED BY: KSW

DRAWN BY: LMCA  
DGN NAME: \_\_\_\_\_

