

**From:** [Vernon Uy](#)  
**To:** [Green, Frank;](#)  
**cc:** [Daly, Keith; Peppers, Nicki;](#)  
**Subject:** Contract 8078, Pressure Gauge Equipment Submittals  
**Date:** Thursday, February 03, 2011 9:44:11 AM  
**Attachments:** [CatalogueCut-PressureGaugeEquipment.pdf](#)  
[RAMForm-PressureGaugeEquipment.pdf](#)  
[TransmittalSheet.pdf](#)

---

Hi Frank.

Attached you'll find the submittals for the Pressure Gauges equipment: RAM and Catalogue Cut.

Hard copies are in the mail.

Vernon Uy  
American Construction Company, Inc.  
(425) 870-3217

\*\*\* eSafe scanned this email for malicious content \*\*\*

\*\*\* IMPORTANT: Do not open attachments from unrecognized senders \*\*\*

Marine Construction Dredging Pile Driving

1501 Taylor Way • Tacoma, Washington 98421

PHONES: Tacoma (253) 254-0118,

Seattle (206) 623-0114,

Fax (253) 254-0155



**AMERICAN  
CONSTRUCTION COMPANY**

CONTRACTORS LIC NO. 223-01-AM-ER-IC\*372 NO.

DATE February 3, 2011

TO:

Columbia River Crossing Project Office  
700 Washington Street, Suite 300  
Vancouver, WA 98660

Attn: Frank Green, P.E.

JOB #: MC 02-11

TITLE: Columbia River Bridge Temporary  
Pile Test Program (#8078)

THE FOLLOWING ITEMS ARE BEING SENT:

Herewith

Under Separate Cover

Direct

X

QUANTITY	DESCRIPTION
4 EA	RAM for Pressure Gauge equipment (from Ashcroft, Inc.)
4 EA	Catalogue Cut of Pressure Gauge equipment (from Ashcroft, Inc.)

These items are being sent:

- |   |  |
|---|--|
| X | Per your request                       |
| X | Please keep us advised of action taken |
| X | For you to process                     |
| X | For your inspection and approval       |
| X | For your general information and file  |
| X | For your approval or corrections       |

REMARKS:

Please contact us promptly if there is a problem or question

COPY TO:

[Empty box for copy to]

AMERICAN CONSTRUCTION COMPANY, INC.

BY:

Vernon Uy



Request for Approval of Material

Contract <b>8078</b>	FA Number _____	SR <b>I-5</b>	Date <b>2/3/11</b>
Section <b>I-5 Columbia River Bridge (WA 0.3 to OR MP 308)</b>		County <b>WA AND OR states</b>	
Contractor <b>AMERICAN CONSTRUCTION COMPANY, INC.</b>		Subcontractor _____	

This form shall be completed prior to submittal. If this form is not complete at time of submittal it may be returned for information that was omitted.  
For assistance in completing, see Instructions and Example

For WSDOT Use Only	
RAM #	
PE/QPL Code	Hdqr./QPL Code

Bid Item No.	Material or Product/Type	Name and Location of Fabricator, Manufacturer or Pit Number	Specification Reference
<b>2&amp;3</b>	<b>Furnish manifold</b>	<b>Ashcroft, Inc.</b>	<b>SPECIAL PROVISIONS</b>
	<b>for both CONFINED</b>	<b>250 East Main Street</b>	<b>page 98</b>
	<b>AND UNCONFINED</b>	<b>Stratford, CT 06614</b>	
	<b>BUBBLE CURTAINS</b>		
	<b>PRESSURE GAUGES</b>	<b>www.ashcroft.com</b>	

Project Engineer	Date	State Materials Engineer	Date
------------------	------	--------------------------	------

Acceptance Action Codes for use by Project Engineer and State Materials Laboratory

- 1. Acceptance Criteria: Acceptance based upon 'Satisfactory' Test Report for samples of materials to be incorporated into project.
- 2. Acceptance Criteria: Mfg. Cert. of Compliance for 'Acceptance' prior to use of material.
- 3. Acceptance Criteria: Catalog Cuts for 'Acceptance' prior to use of material. Catalog Cut Approved  Yes  No
- 4. Acceptance Criteria: Submit Shop Drawings for 'Approval' prior to fabrication of material.
- 5. Acceptance Criteria: Only 'Approved for Shipment', 'WSDOT Inspected' or 'Fabrication Approved Decal' material shall be used.
- 6. Acceptance Criteria: Submit Certificate of Materials Origin to Project Engineer Office.
- 7. Acceptance Criteria: Request Transmitted to State Materials Laboratory for Approval Action.
- 8. Source Approved: \_\_\_\_\_
- 9. Approval Withheld: Submit samples for preliminary evaluation.
- 10. Approval Withheld: \_\_\_\_\_
- 11. Miscellaneous Acceptance Criteria.

Remarks:

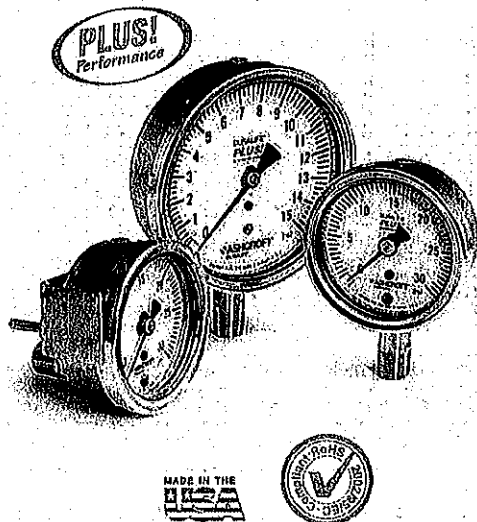
Project Engineer Distribution

- Contractor
- Region Operations Engineer
- Fabrication Inspection
- Region Materials
- State Materials Lab
- M/S 47365

State Materials Engineer Distribution

- General File
- Other
- Signing Inspection

## Type 1009SW Stainless Case Gauge with Stainless Steel System



### FEATURES

- Patented PowerFlex™ movement
- All stainless steel welded construction
- True Zero™ pointer indication
- NEW ventable plug
- NEW patent pending through-dial calibration
- NEW MSL helium leak tested to  $1 \times 10^{-6}$  ATM <sup>(CO<sub>2</sub>)</sup>
- Meets ASME B40.100 standard
- RoHS Compliant
- CRN Approved
- 5 year limited warranty

Ashcroft is pleased to reintroduce the 1009SW Duralife® pressure gauge. This gauge has been upgraded with many new features outlined above while maintaining the tried and true performance and quality you have come to expect.

Duralife 1009SW gauges provide significant features and benefits. New features include a ventable plug that can be sealed or vented depending on your environment and a patent pending through-dial recalibration that reduces recalibration time.

The combination of features including the patented PowerFlex™ movement and optional PLUS!™ Performance dampening system in the 1009SW is the finest gauge technology for vibration, shock and pulsation applications. Available in pressure ranges from vacuum to 15,000 psi, including compound and metric ranges.

### PRODUCT SPECIFICATIONS

Ashcroft Type No.:	1009SW
Sizes:	2½", 3½"
Case:	304SS
Ring:	304SS polished bayonet
Window:	Polycarbonate
Dial:	Black figures on white background, aluminum
Pointer:	Friction adjust, black, aluminum
Bourdon Tube:	316L stainless steel C-Shaped (Vacuum-600 psi and compound) Helical (1000-15,000 psi)
Socket:	316L Stainless Steel
Movement:	300 series stainless steel, PowerFlex™, polyester segment, overload/underload stops
Connections:	¼ and ½ NPT, lower or lower back, ½ NPT lower (3½") only.
Ranges:	Vac-15,000 psi and compound
Accuracy:	1% full scale, ASME Grade 1A <sup>(1)</sup>
Fill Plug:	Ventable
Protection:	Nema 4X / IP65 plug sealed Nema 3 / IP54 plug vented
Ambient Temperature Limitations:	-40°F to 200°F dry +20°F to 150°F glycerin filled -40°F to 150°F silicone filled (based on standard polycarbonate window)
<b>OPTIONAL FEATURES</b>	
Liquid fill:	Glycerin, Silicone, Halocarbon (includes throttle plug)
Dampening:	PLUS!™ Performance (LL) (includes throttle plug)
Window:	Safety Glass (SG)
Pointer:	Micrometer (MP)
Connections:	Metric and SAE on request
Mounting:	U-clamp (UC), Front flange (FF), Back flange (FW)
Dials:	Receiver ranges, refrigerant ranges, Custom dials

<sup>(1)</sup>When these gauges are liquid filled the total gauge accuracy may be as much as 1.5%

### HOW TO ORDER (Typical example)

	35	1009 SW (L)	02L	XXX	100#
Dial Size: 2½" (25), 3½" (35)	_____	_____	_____	_____	_____
Case Type: 1009	_____	_____	_____	_____	_____
Tube and Socket Material: 316L SS	_____	_____	_____	_____	_____
Liquid Filled: (glycerin) leave blank if dry	_____	_____	_____	_____	_____
Connection Size: ¼ (01), ½ (02), ¾ (04) 3½" only	_____	_____	_____	_____	_____
Connection Location: Lower (L), Lower Back (B)	_____	_____	_____	_____	_____
Options:	_____	_____	_____	_____	_____
Range: 0/100 psi	_____	_____	_____	_____	_____

**ISO 9001**  
REGISTERED FIRM

BULLETIN GS-3

All specifications are subject to change without notice. All sales subject to standard terms and conditions. © Ashcroft Inc. 2009 11/09

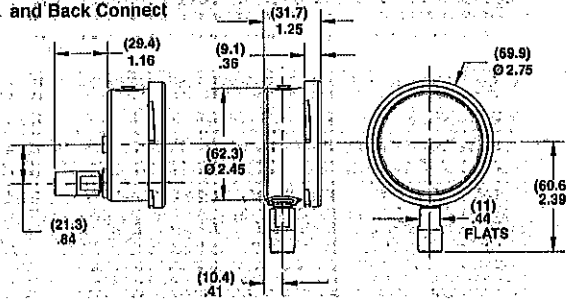
Ashcroft Inc., 250 East Main Street, Stratford, CT 06614 USA  
Tel: 203-378-8281 • Fax: 203-385-0408  
email: info@ashcroft.com • www.ashcroft.com

# Type 1009SW Stainless Case Gauge with Stainless Steel System

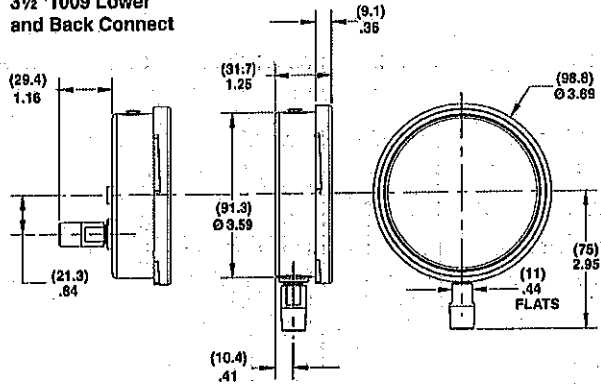


## DIMENSIONS

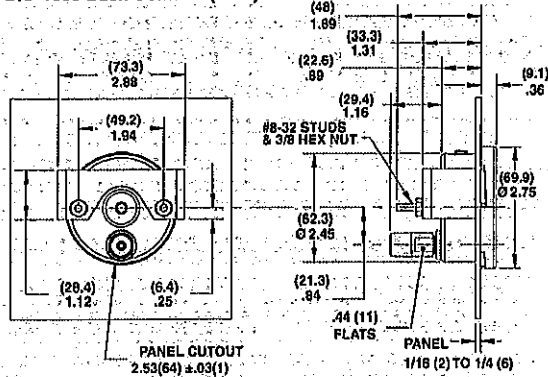
**2 1/2" 1009 Lower and Back Connect**



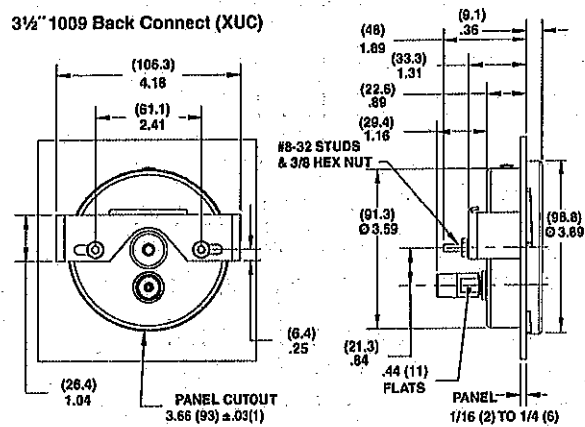
**3 1/2" 1009 Lower and Back Connect**



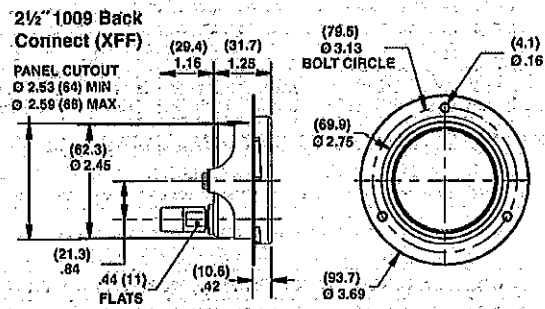
**2 1/2" 1009 Back Connect (XUC)**



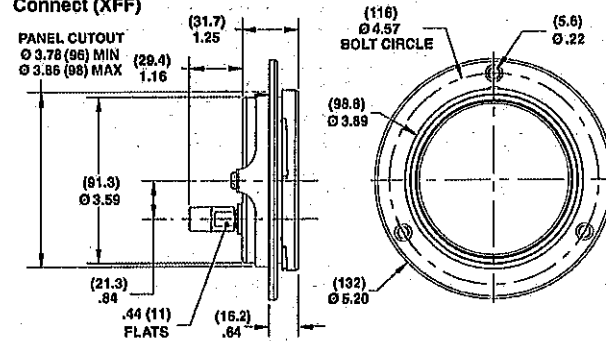
**3 1/2" 1009 Back Connect (XUC)**



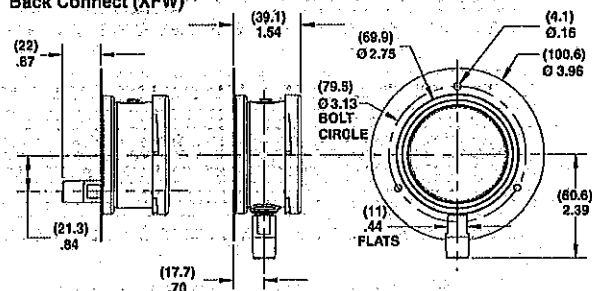
**2 1/2" 1009 Back Connect (XFF)**



**3 1/2" 1009 Back Connect (XFF)**



**2 1/2" 1009 Lower and Back Connect (XFW)**



**3 1/2" 1009 Lower and Back Connect (XFW)**

