



Request for Approval of Material

Contract 8078	FA Number _____	SR I-5	Date 2/3/11
Section I-5 Columbia River Bridge (WA 0.3 to OR MP 308)		County WA AND OR states	
Contractor AMERICAN CONSTRUCTION COMPANY, INC.		Subcontractor _____	

This form shall be completed prior to submittal. If this form is not complete at time of submittal it may be returned for information that was omitted.
For assistance in completing, see Instructions and Example

For WSDOT Use Only
RAM # **3**

Bid Item No.	Material or Product/Type	Name and Location of Fabricator, Manufacturer or Pit Number	Specification Reference	PE/QPL Code	Hdqr./QPL Code
2&3	Furnish manifold	Ashcroft, Inc.	SPECIAL PROVISIONS		
	for both CONFINED	250 East Main Street	page 98	7	
	AND UNCONFINED	Stratford, CT 06614			
	BUBBLE CURTAINS				
2.12	PRESSURE GAUGES	www.ashcroft.com			
3.12					

Project Engineer Luigi Peppers for Frank Green	Date 2/3/11	State Materials Engineer	Date
--	-----------------------	--------------------------	------

Acceptance Action Codes for use by Project Engineer and State Materials Laboratory

1. Acceptance Criteria: Acceptance based upon 'Satisfactory' Test Report for samples of materials to be incorporated into project.
2. Acceptance Criteria: Mfg. Cert. of Compliance for 'Acceptance' prior to use of material.
3. Acceptance Criteria: Catalog Cuts for 'Acceptance' prior to use of material. Catalog Cut Approved Yes No
4. Acceptance Criteria: Submit Shop Drawings for 'Approval' prior to fabrication of material.
5. Acceptance Criteria: Only 'Approved for Shipment', 'WSDOT Inspected' or 'Fabrication Approved Decal' material shall be used.
6. Acceptance Criteria: Submit Certificate of Materials Origin to Project Engineer Office.
7. Acceptance Criteria: Request Transmitted to State Materials Laboratory for Approval Action.
8. Source Approved:
9. Approval Withheld: Submit samples for preliminary evaluation.
10. Approval Withheld:
11. Miscellaneous Acceptance Criteria.

Remarks:

cc: American Construction, Peppers

Project Engineer Distribution

- Contractor Region Materials
 Region Operations Engineer State Materials Lab
 Fabrication Inspection M/S 47365

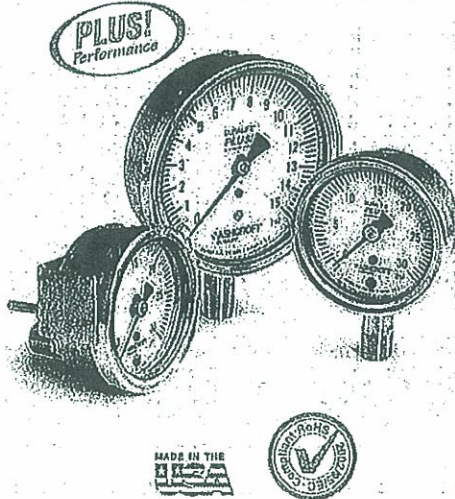
State Materials Engineer Distribution

- General File Signing Inspection
 Other

CAT - 0002



Type 1009SW Stainless Case Gauge with Stainless Steel System



FEATURES

- Patented PowerFlex™ movement
- All stainless steel welded construction
- True Zero™ pointer indication
- NEW ventable plug
- NEW patent pending through-dial calibration
- NEW MSL helium leak tested to 1X10⁻⁶ ATM¹⁰⁰
- Meets ASME B40.100 standard
- RoHS Compliant
- CRN Approved
- 5 year limited warranty

Ashcroft is pleased to reintroduce the 1009SW Duralife® pressure gauge. This gauge has been upgraded with many new features outlined above while maintaining the tried and true performance and quality you have come to expect.

Duralife 1009SW gauges provide significant features and benefits. New features include a ventable plug that can be sealed or vented depending on your environment and a patent pending through-dial recalibration that reduces recalibration time.

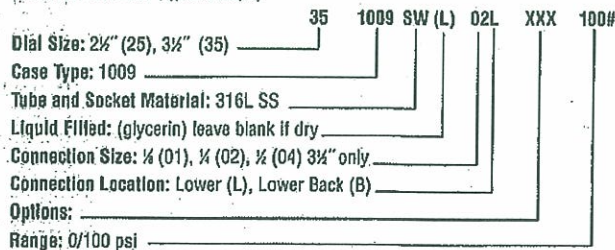
The combination of features including the patented PowerFlex™ movement and optional PLUS!™ Performance dampening system in the 1009SW is the finest gauge technology for vibration, shock and pulsation applications. Available in pressure ranges from vacuum to 15,000 psi, including compound and metric ranges.

PRODUCT SPECIFICATIONS

Ashcroft Type No.:	1009SW
Sizes:	2½", 3½"
Case:	304SS
Ring:	304SS polished bayonet
Window:	Polycarbonate
Dial:	Black figures on white background, aluminum
Pointer:	Friction adjust, black, aluminum
Bourdon Tube:	316L stainless steel C-Shaped (Vacuum-600 psi and compound) Helical (1000-15,000 psi)
Socket:	316L Stainless Steel
Movement:	300 series stainless steel, PowerFlex™ polyester segment, overload/underload stops
Connections:	¼ and ½ NPT, lower or lower back, ½ NPT lower (3½") only.
Ranges:	Vac-15,000 psi and compound
Accuracy:	1% full scale, ASME Grade 1A ¹⁰⁰
Fill Plug:	Ventable
Protection:	Nema 4X / IP65 plug sealed Nema 3 / IP54 plug vented
Ambient Temperature Limitations:	-40°F to 200°F dry -20°F to 150°F glycerin filled -40°F to 150°F silicone filled (based on standard polycarbonate window)
OPTIONAL FEATURES	
Liquid fill:	Glycerin, Silicone, Halocarbon (Includes throttle plug)
Dampening:	PLUS!™ Performance (LL) (Includes throttle plug)
Window:	Safety Glass (SG)
Pointer:	Micrometer (MP)
Connections:	Metric and SAE on request
Mounting:	U-clamp (UC), Front flange (FF), Back flange (FW)
Dials:	Receiver ranges, refrigerant ranges, Custom dials

¹⁰⁰When these gauges are liquid filled the total gauge accuracy may be as much as 1.5%

HOW TO ORDER (Typical example)



ISO 9001
REGISTERED FIRM

BULLETIN GS-3

All specifications are subject to change without notice.
All sales subject to standard terms and conditions.
© Ashcroft Inc. 2009 11/09

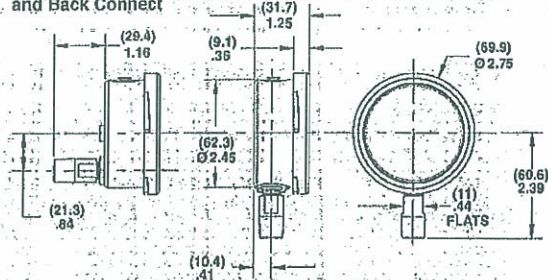
Ashcroft Inc., 250 East Main Street, Stratford, CT 06614 USA
Tel: 203-378-8281 • Fax: 203-385-0408
email: info@ashcroft.com • www.ashcroft.com

Type 1009SW Stainless Case Gauge with Stainless Steel System

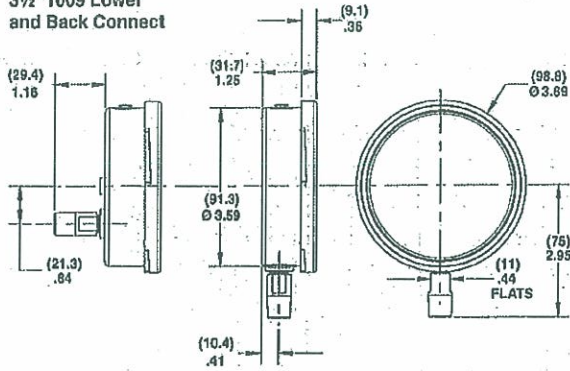


DIMENSIONS

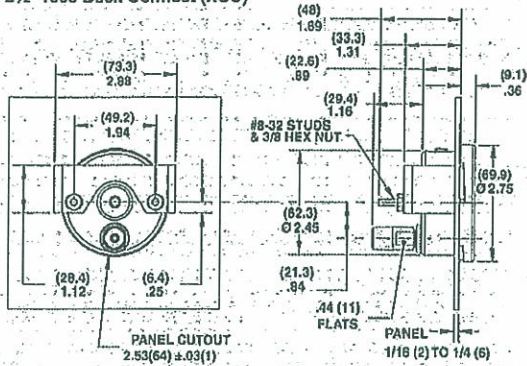
2 1/2" 1009 Lower and Back Connect



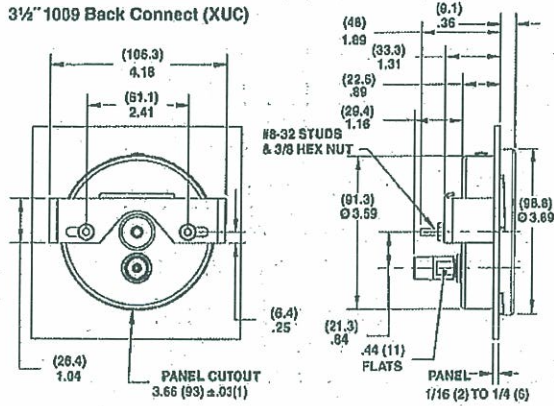
3 1/2" 1009 Lower and Back Connect



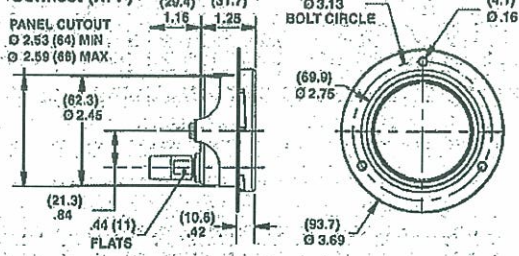
2 1/2" 1009 Back Connect (XUC)



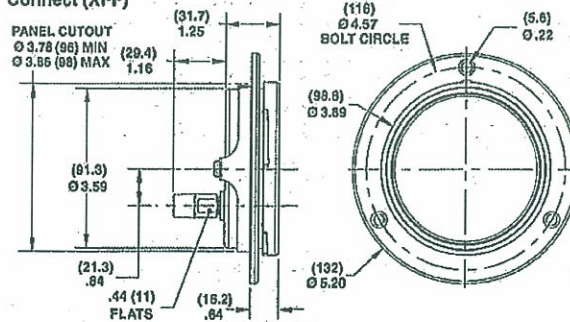
3 1/2" 1009 Back Connect (XUC)



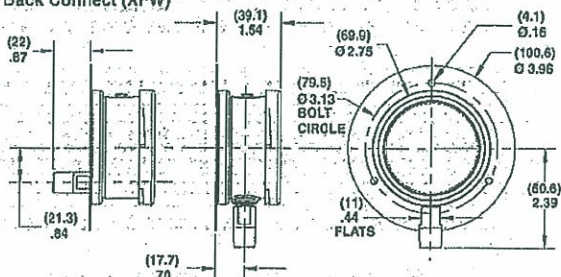
2 1/2" 1009 Back Connect (XFF)



3 1/2" 1009 Back Connect (XFF)



2 1/2" 1009 Lower and Back Connect (XFW)



3 1/2" 1009 Lower and Back Connect (XFW)

