

**From:** [Vernon Uy](#)  
**To:** [Green, Frank;](#)  
**cc:** [Daly, Keith; Peppers, Nicki;](#)  
**Subject:** Contract 8078 - Bubble Curtain Shop Drawing submittal  
**Date:** Tuesday, January 25, 2011 4:41:04 PM  
**Attachments:** [BubbleCurtainRingsShopDrawing.pdf](#)

---

Hi Frank.

Attached you'll find the shopdrawing submittal for the Bubble Curtain rings (bottom and upper rings). This is to satisfy Section 1-01.3.

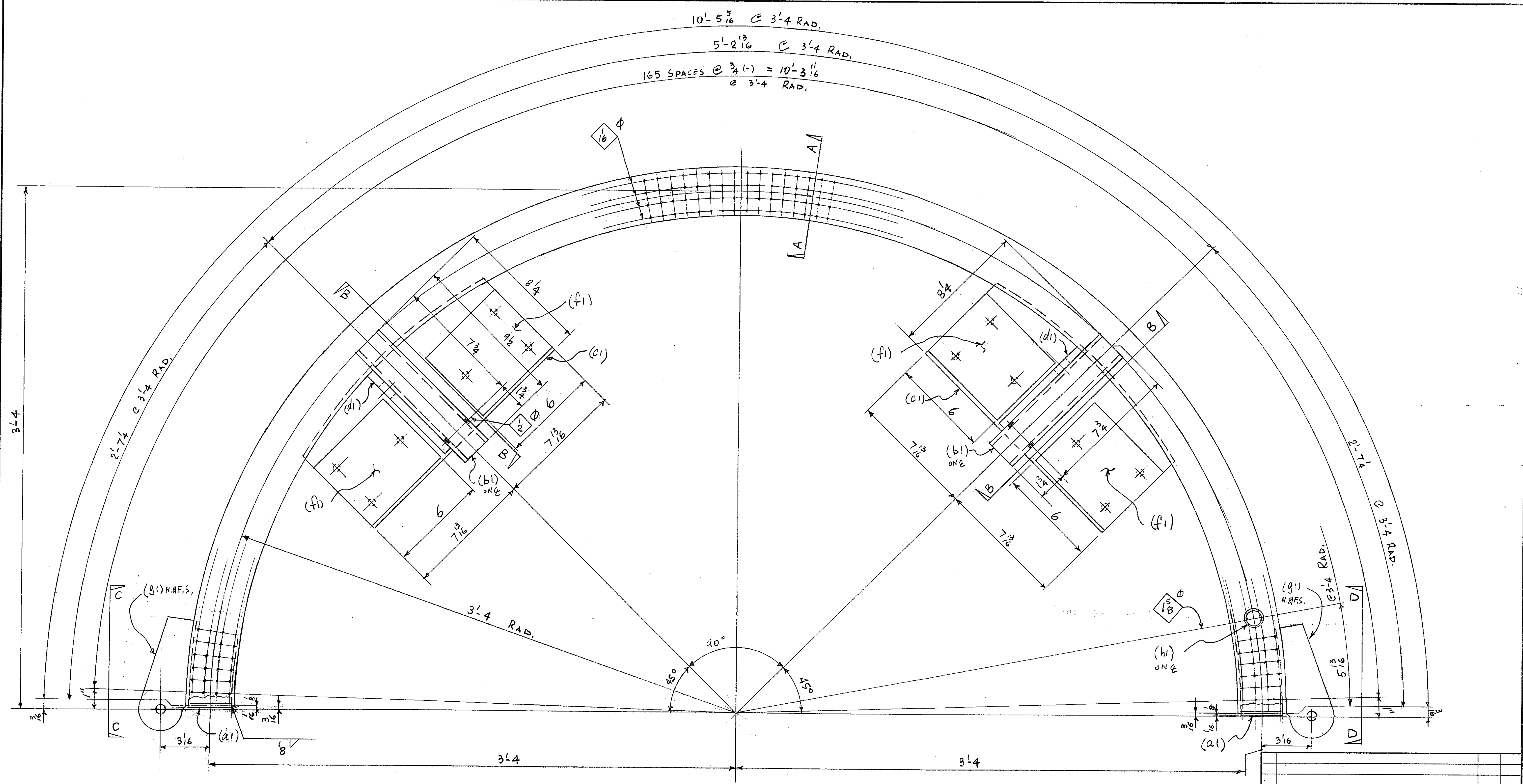
I still need to mail hard copies (11x17 sheets). Please provide me an address (and contact) to mail the shopdrawings to.

Thanks.

Vernon Uy  
American Construction Company, Inc.  
(425) 870-3217

\*\*\* eSafe scanned this email for malicious content \*\*\*

\*\*\* IMPORTANT: Do not open attachments from unrecognized senders \*\*\*



MAKE ONE ~ 2 1/2" Φ SCH 80 PIPE x 10'-5 5/16" ~ MK 1A  
 ALUMINUM PIPE FOR BOTTOM RING, REF. NO 2

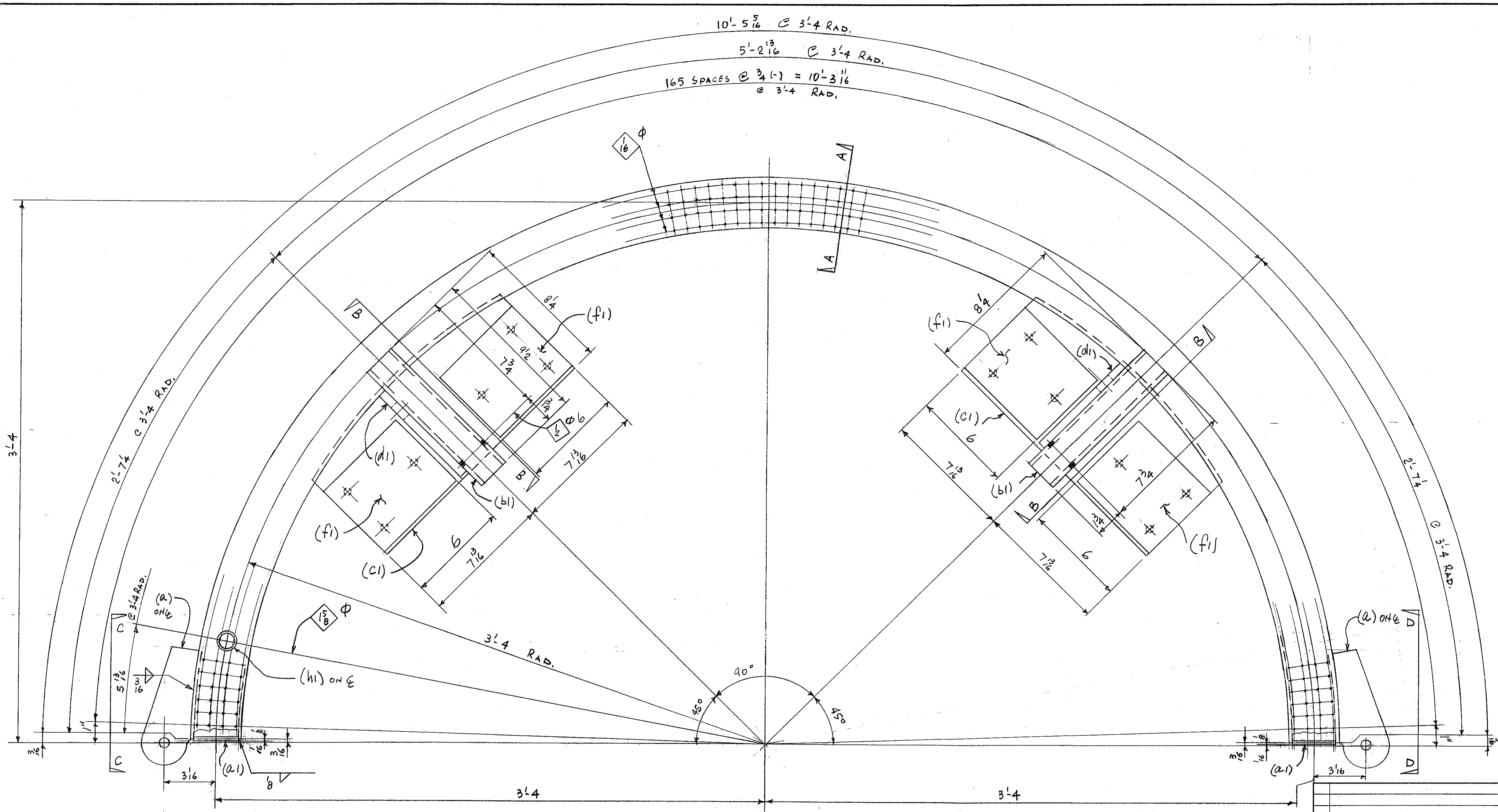
WORK THIS DWG. WITH DWG. 2  
 FOR FIELD BOLT LIST SEE DWG. 9

NO.		DESCRIPTION		DATE	BY
REVISION					
CERT WELDERS	W. A. B. O.			PRINTS	APPLY
				DATE	REV
OPEN HOLES	13/16" U.N.	END & EDGE DISTANCE			
PAINT	NO PAINT				
<b>RAINIER WELDING</b>					
19020 NE 84TH STREET · REDMOND, WA 98053 (425) 868-1300 FAX (425) 868-8872 STEEL AND ALUMINUM FABRICATING					
ITEM	BOTTOM RING				
JOB	COLUMBIA RIVER BRIDGE TEMPORARY PILE TEST				
LOCATION	I-5, WA.				
CONTR	AMERICAN CONST.				
DRWN BY	CHKD BY	DATE	JOB NO.	DRWG NO.	REV
PF	J.M.R.	01-20-11	2860	1	





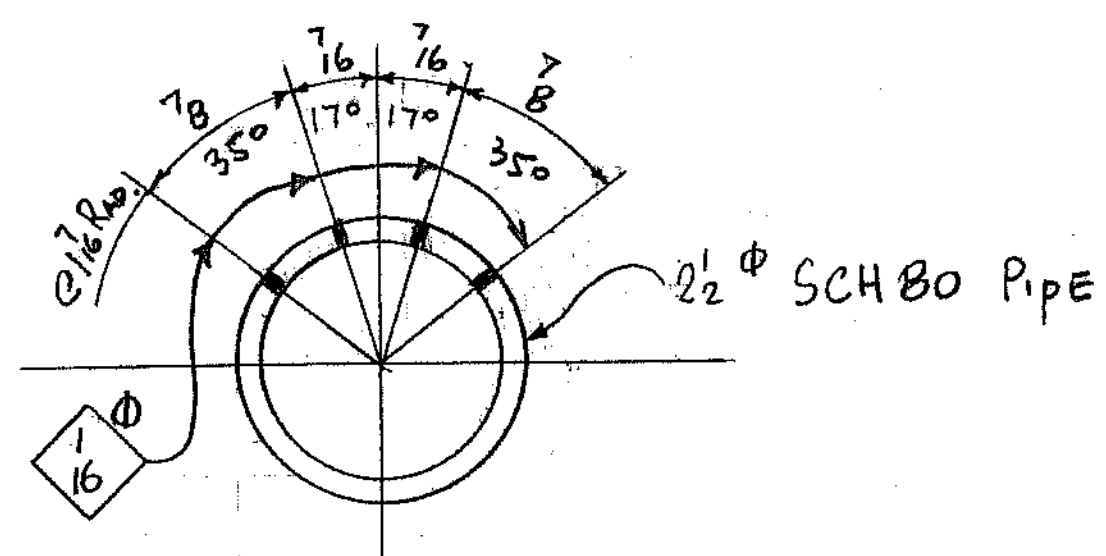




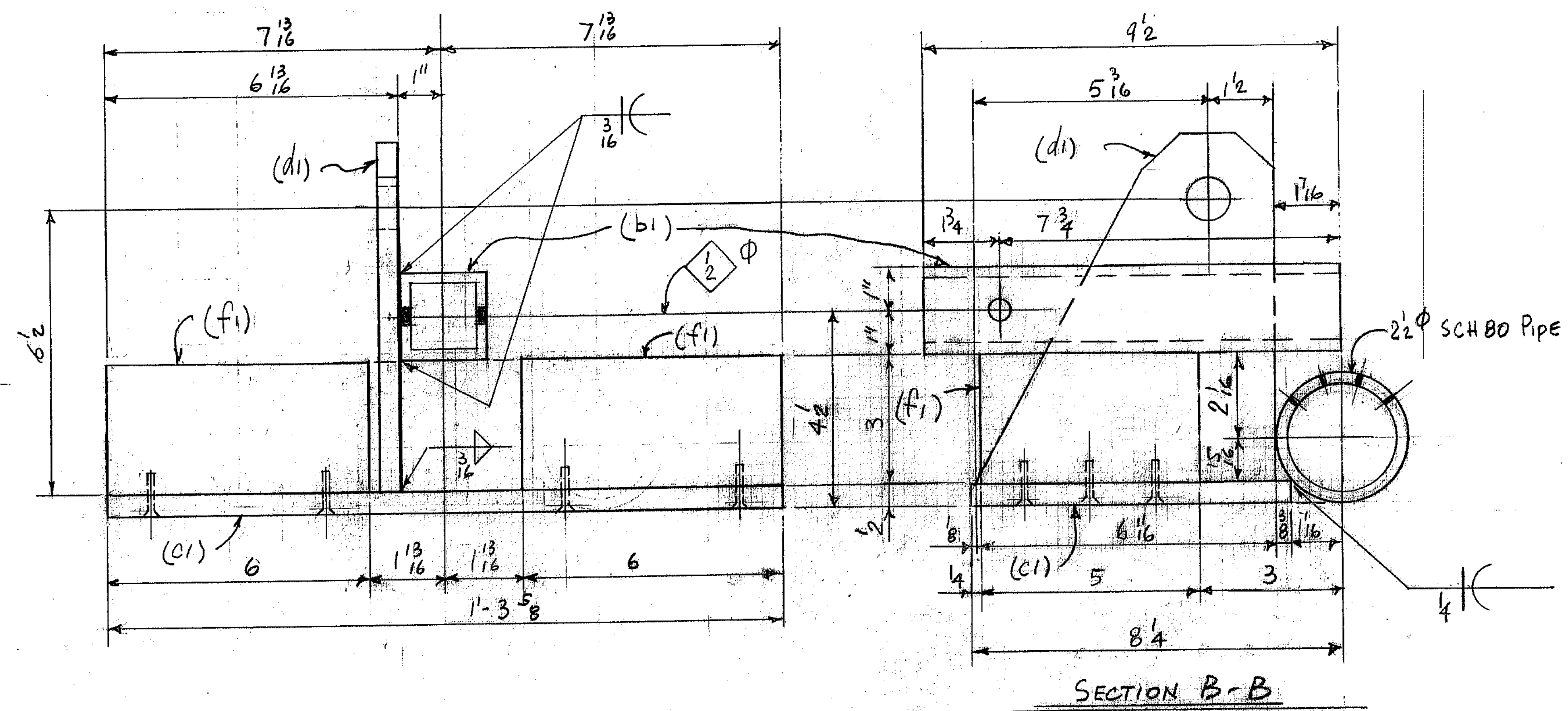
MAKE ONE ~ 2 1/2" Φ SCH 80 PIPE x 10'-5 5/16" ~ MK 3A  
 ALUMINUM PIPE FOR BOTTOM RING, REF. ND 2

WORK THIS DWG. WITH DWG. 4  
 FIELD BOLT LIST FOR THIS DWG. SEE DWG. 9

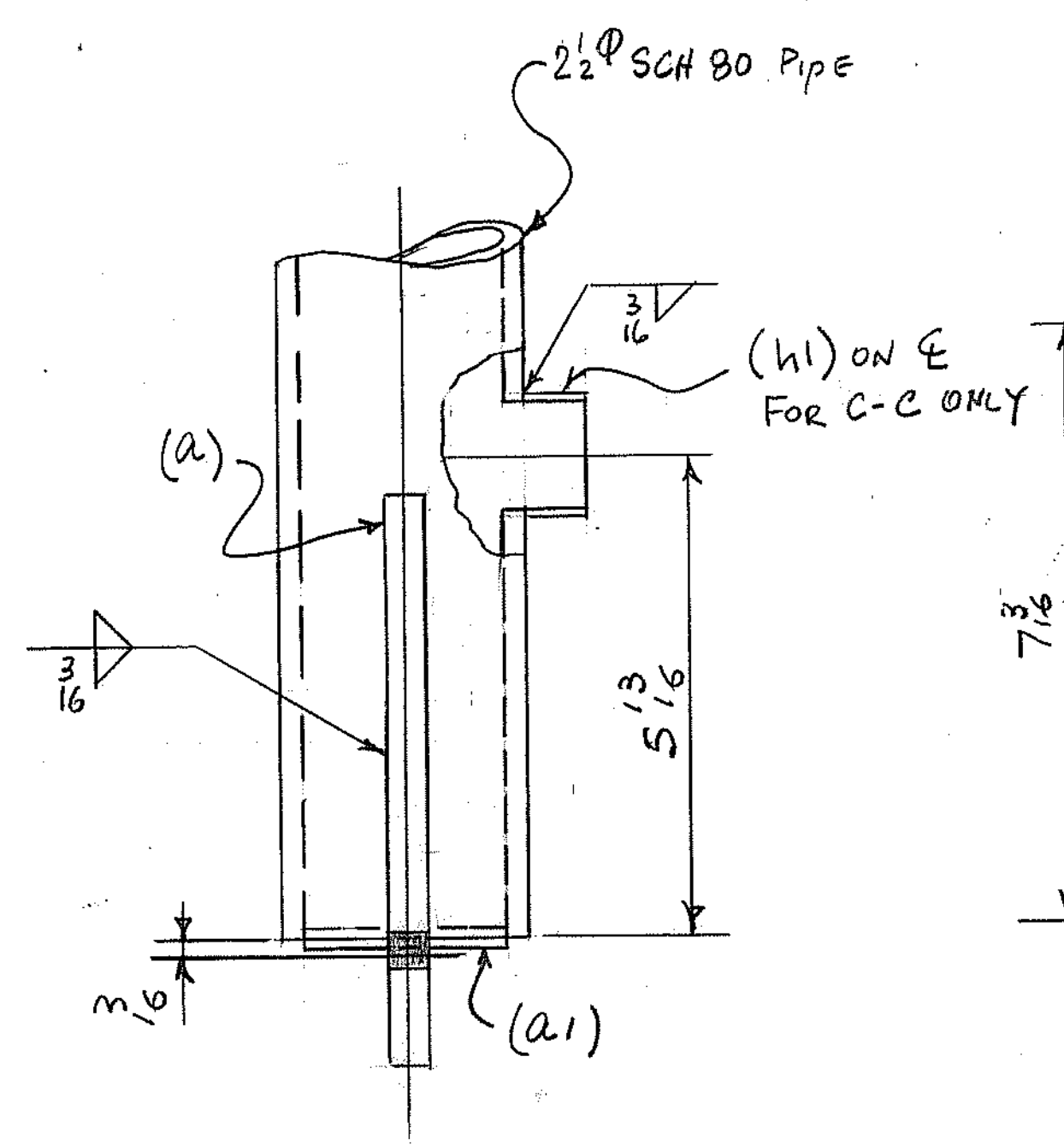
NO.		DESCRIPTION		DATE	BY
REVISION					
CERT WELDERS		W.A.B.O.		PRINTS	APPVL
DATE		REV		SHOP	FIELD
OPEN HOLES	13/16" U.N.	END & EDGE DISTANCE			
PAINT	NO PAINT	U.N.			
<b>RAINIER WELDING</b>					
19020 NE 84TH STREET · REDMOND, WA 98053					
(425) 868-1300 FAX (425) 868-8872					
STEEL AND ALUMINUM FABRICATING					
ITEM	BOTTOM RING				
JOB	COLUMBIA RIVER BRIDGE				
	TEMPORARY PILE TEST				
LOCATION	I-5, WA.				
CONTR.	AMERICAN CONST.				
DRWN BY	DATE	JOB NO.	DRWG. NO.	REV.	
PF	J.M.R. 01-21-11	2860	3		



SECTION A-A

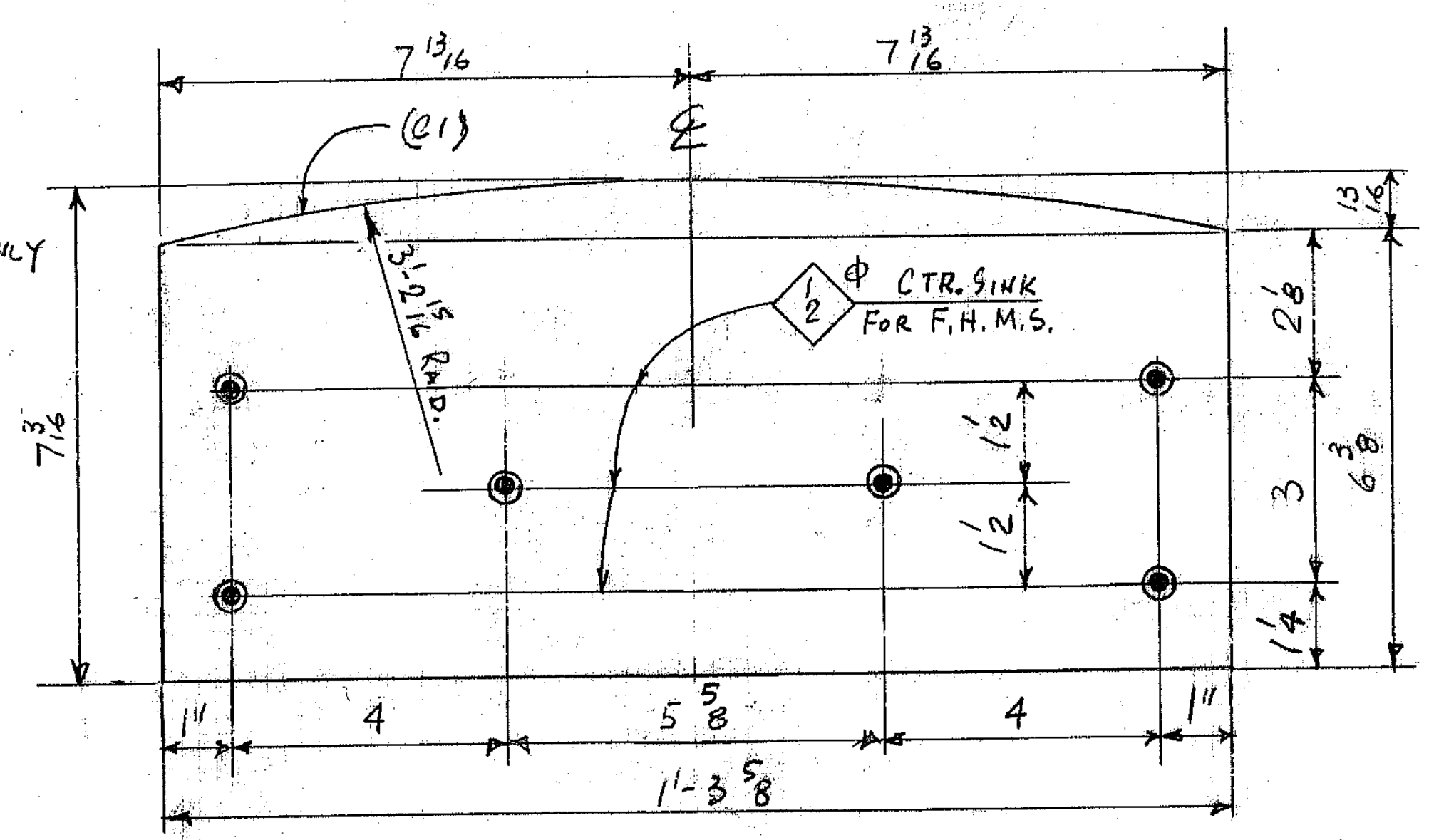


SECTION B-B

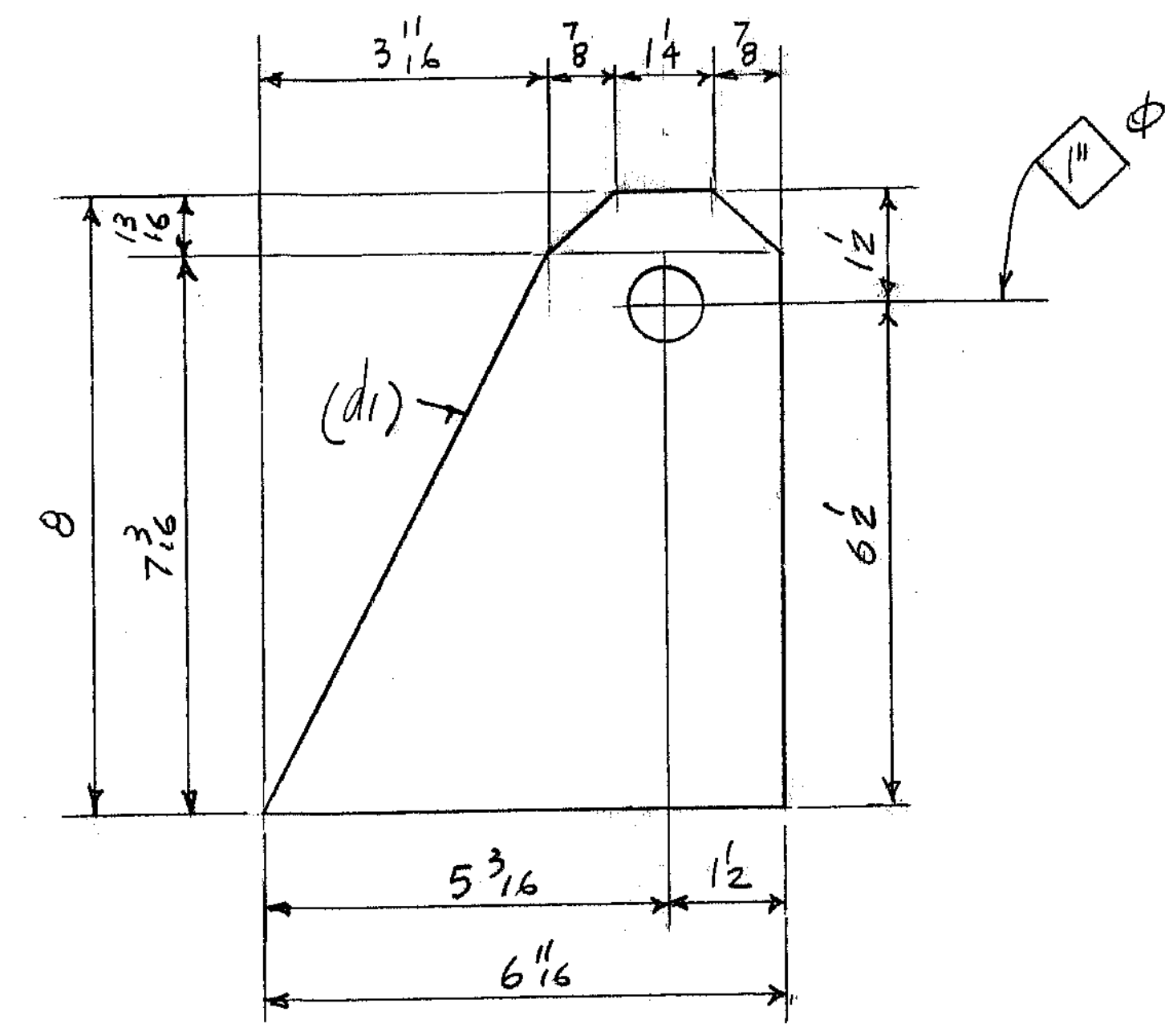


VIEW C-C

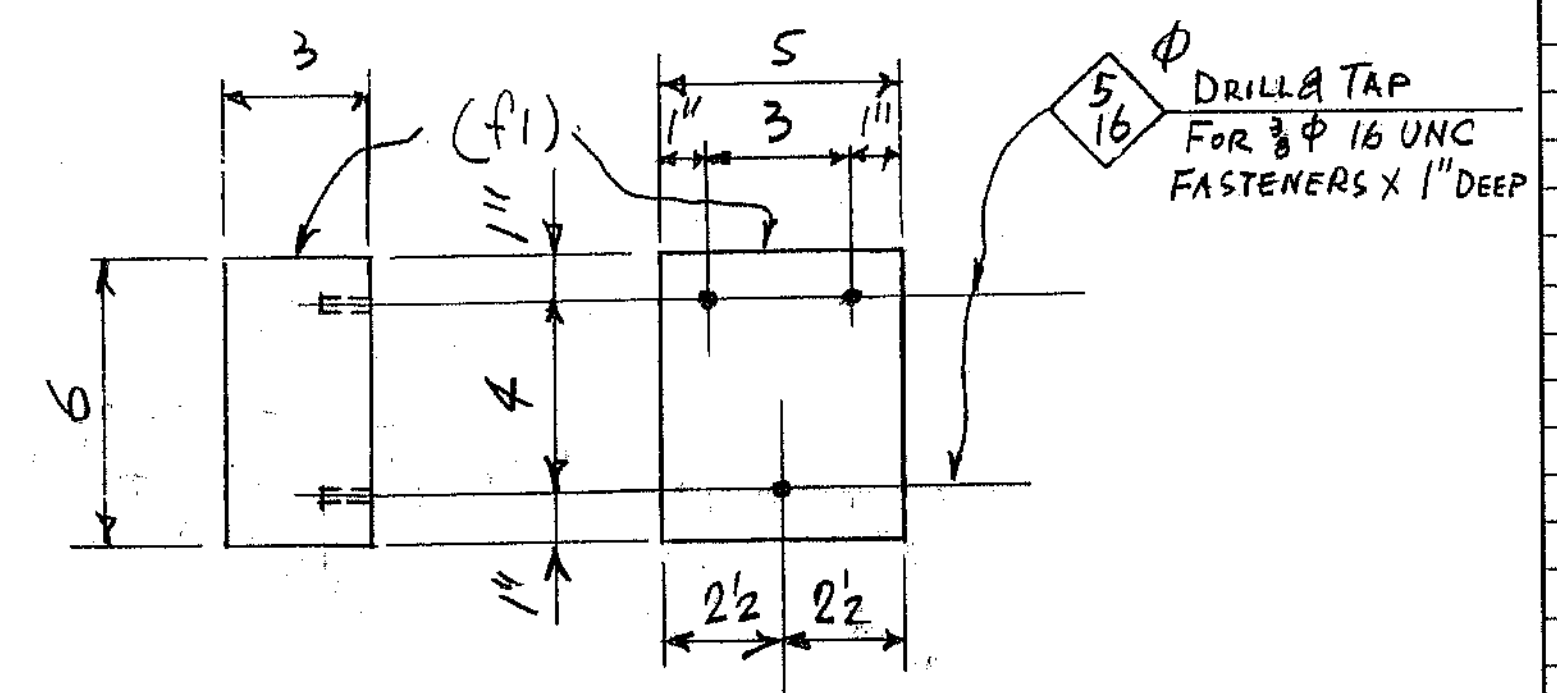
VIEW D-D



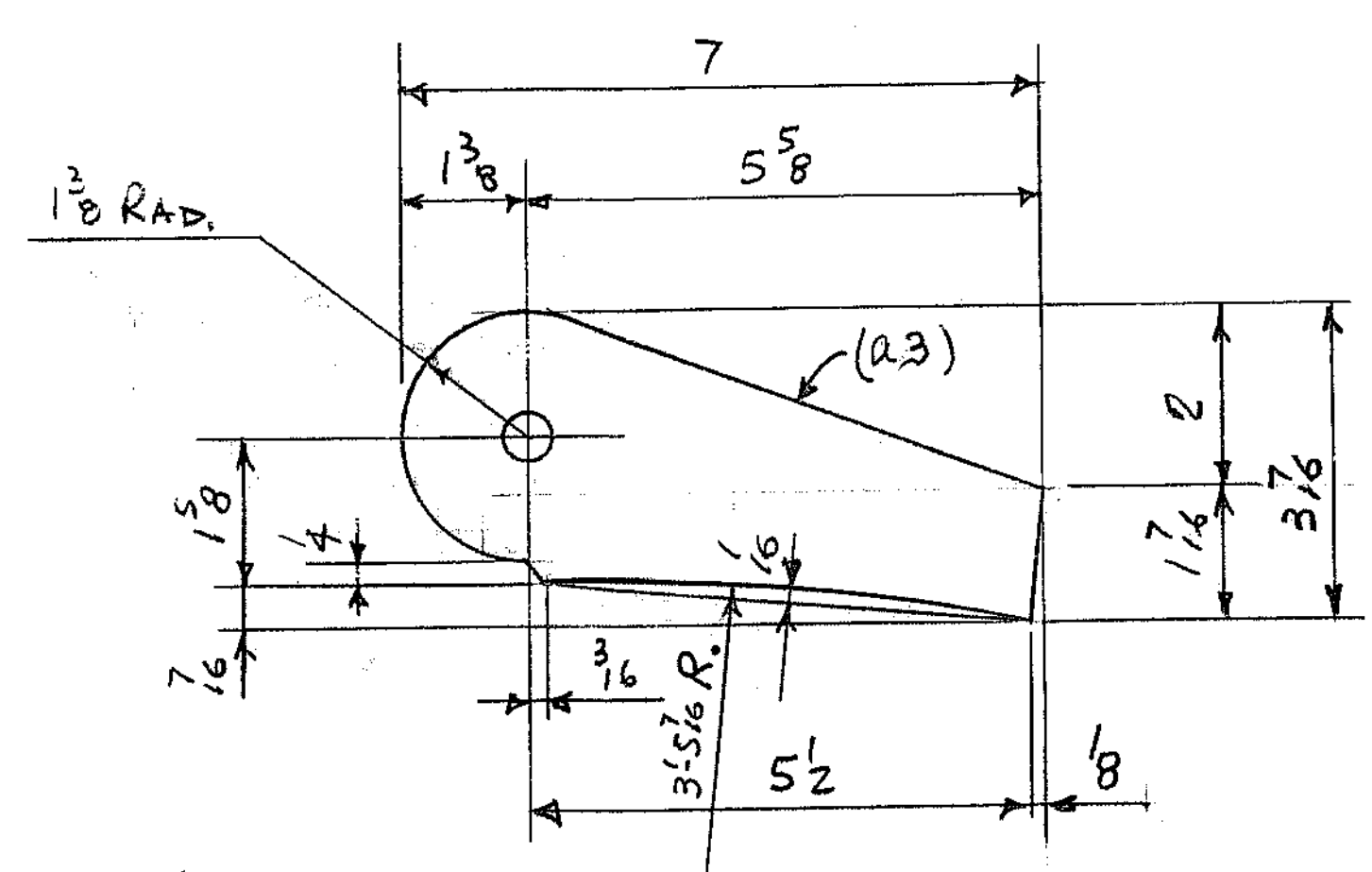
DETAIL 1



DETAIL 2



DETAIL 3



DETAIL 4

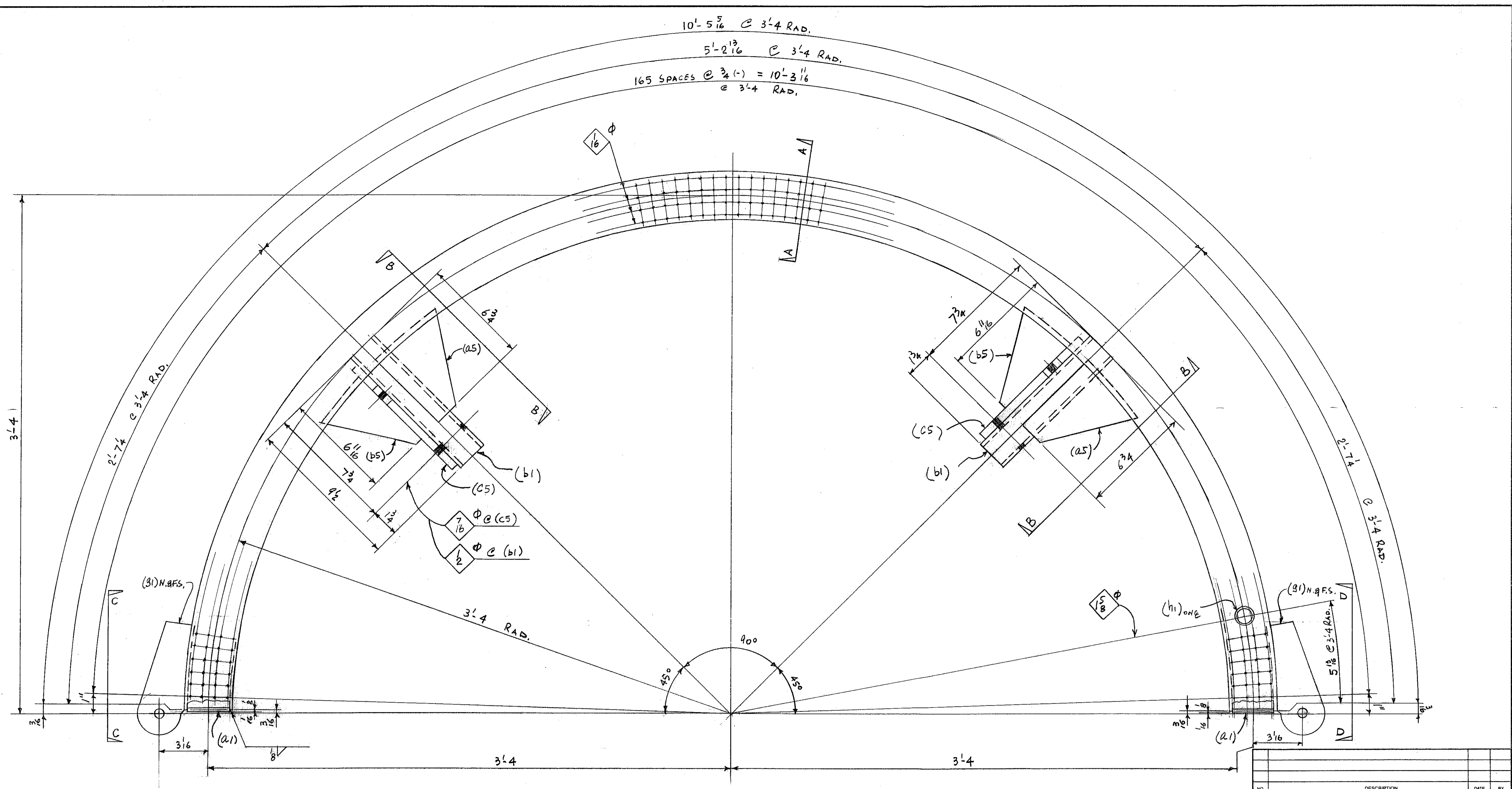
BILL OF MATERIAL

NO. TO SHIP	SHIP MARK	ASBY MARK	NO. PCS.	SECTION	LENGTH		REMARKS	UNIT WT.	WEIGHT	P.O. NO.
					FT.	IN.				
ONE 3A				2 1/2" SCH 80 PIPE	10	5 5/8	ROLL			
			2	FL 2 x 3 7/16	0	7	DET. 4			
			2	FL 4 x 2 5/16	0	2 7/8				
			2	TS 2 x 2 x 4	0	9 1/2				
			2	FL 2 x 7 3/8	1	3 5/8	DET. 1			
			2	FL 2 x 6 1/2	0	8	DET. 2			
			4	FL 3 x 5	0	6	DET. 3, A36			
			1	1 1/4" HALF COUPLING						
			12	3/8" F.H.M.S.	0	1	ST. ST.			

MATERIAL: AL 6061-T6, U.N.  
MILL CERTS. REQ'D.

WORK THIS DWG. WITH DWG. 3

NO.	DESCRIPTION	DATE	BY
	REVISION		
CERT WELDERS	WA. B.O.	PRINTS	APPVL. SHOP FIELD
DATE	REV.		
OPEN HOLES	13/16 U.N. END & EDGE DISTANCE		
PAINT	NO PAINT		
<b>RAINIER WELDING</b>			
19020 NE 84TH STREET - REDMOND, WA 98053 (425) 868-1300 FAX (425) 868-8872 STEEL AND ALUMINUM FABRICATING			
ITEM	BOTTOM RING - SECTIONS, DETAILS		
JOB	COLUMBIA RIVER BRIDGE TEMPORARY PILE TEST		
LOCATION	I-5, WA,		
CONTR.	AMERICAN CONST.		
DRWN BY	CHKD BY	DATE	JOB NO.
PF	J.M.R.	01-21-11	2860
			DRWG. NO.
			4

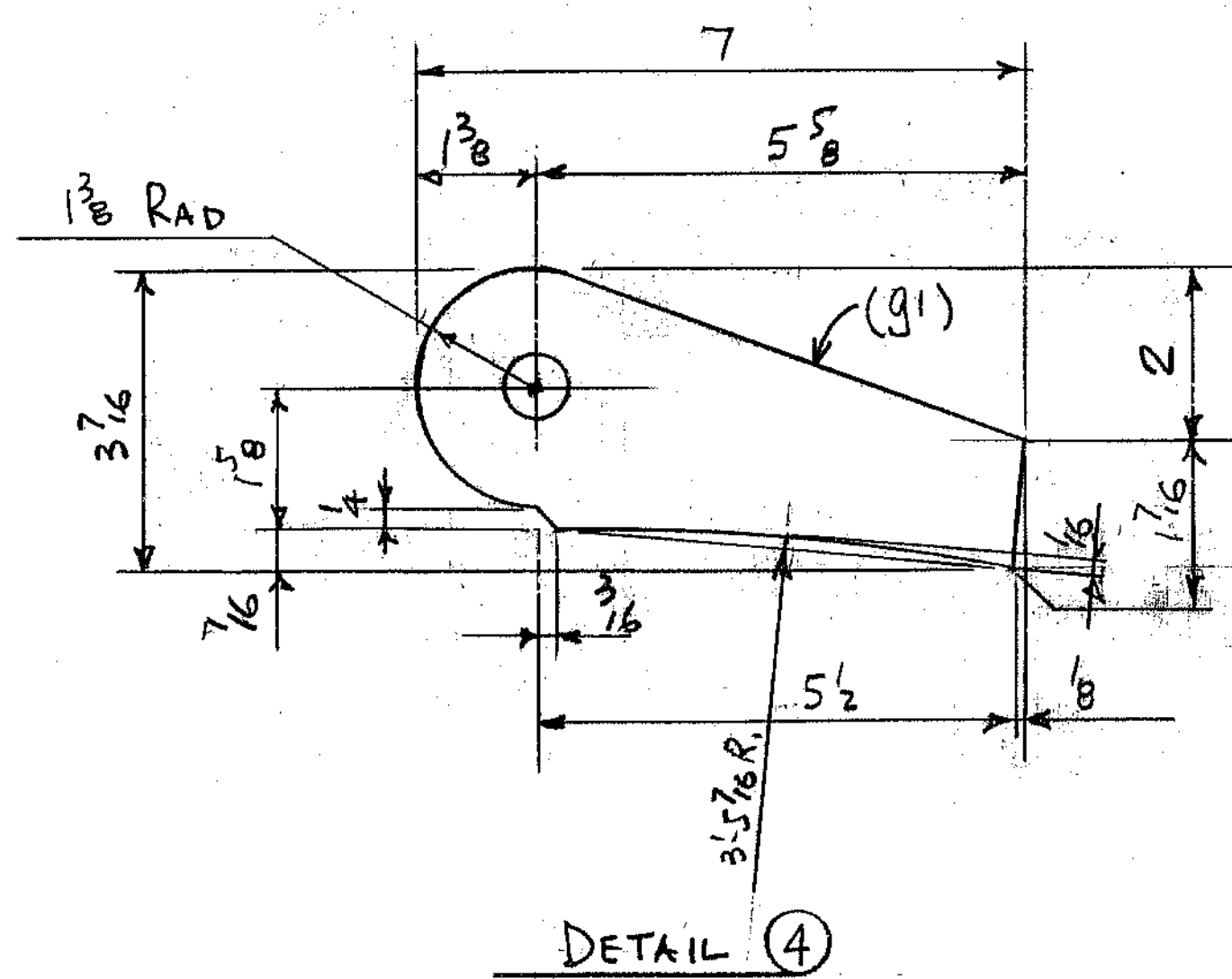
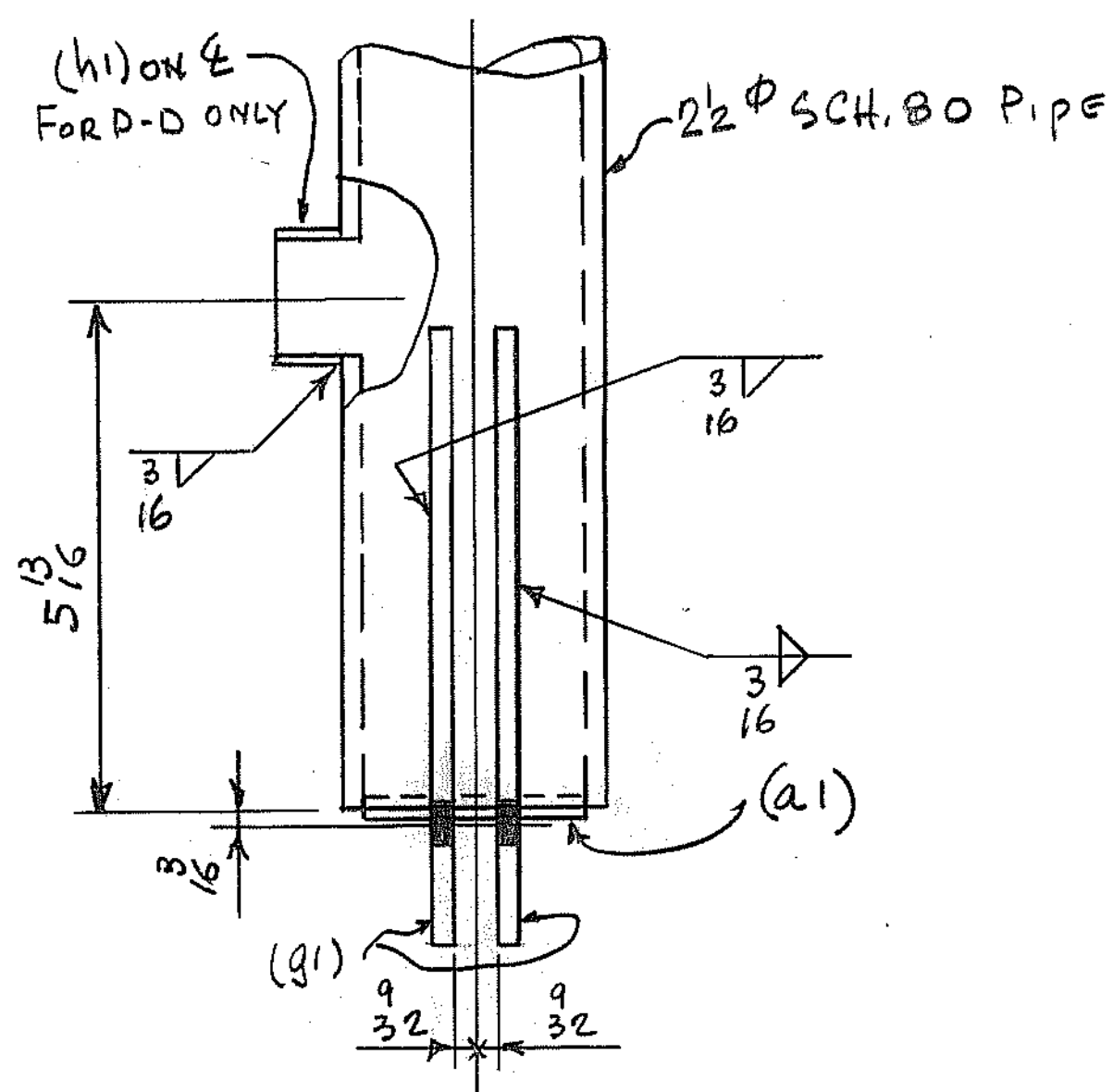
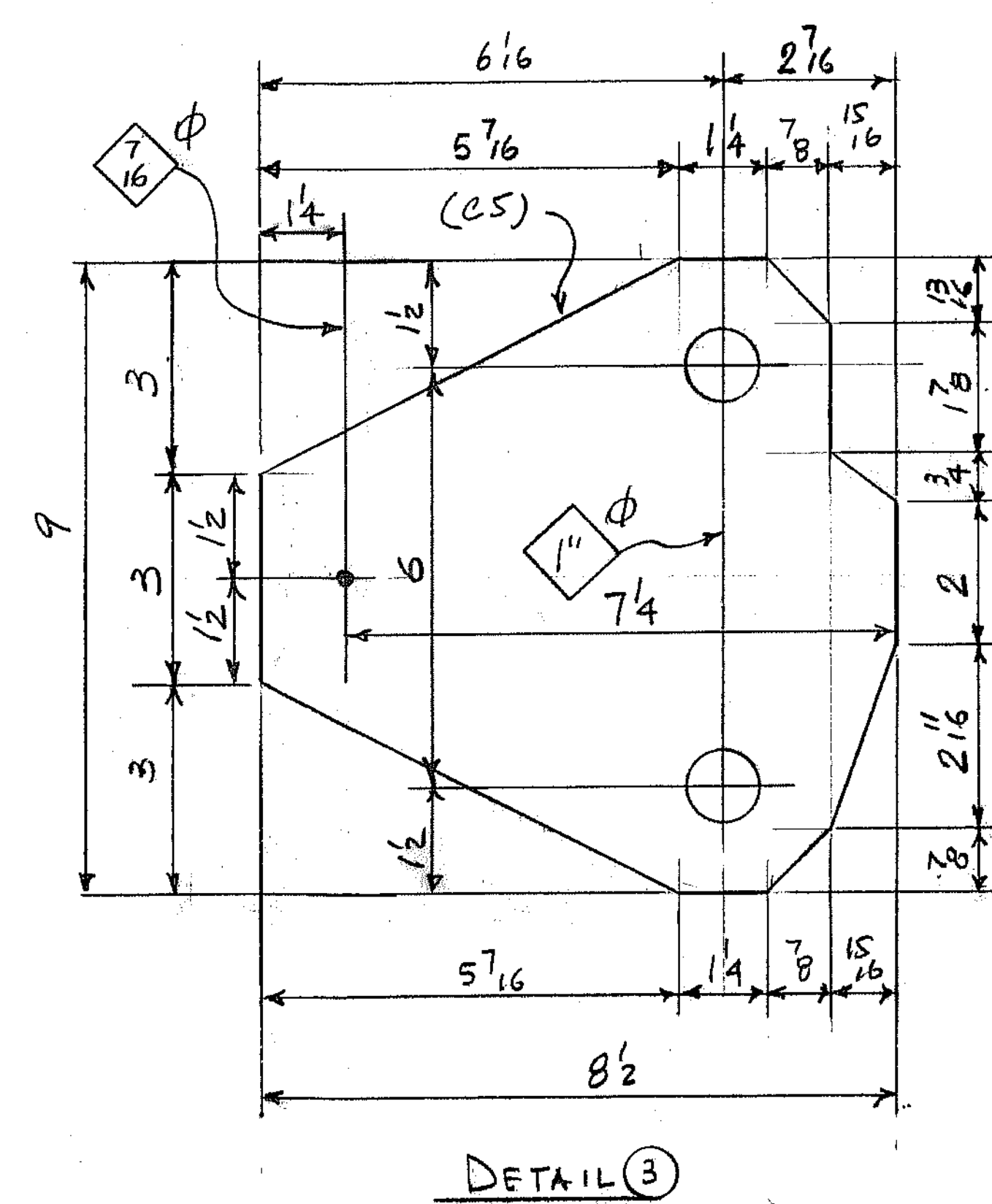
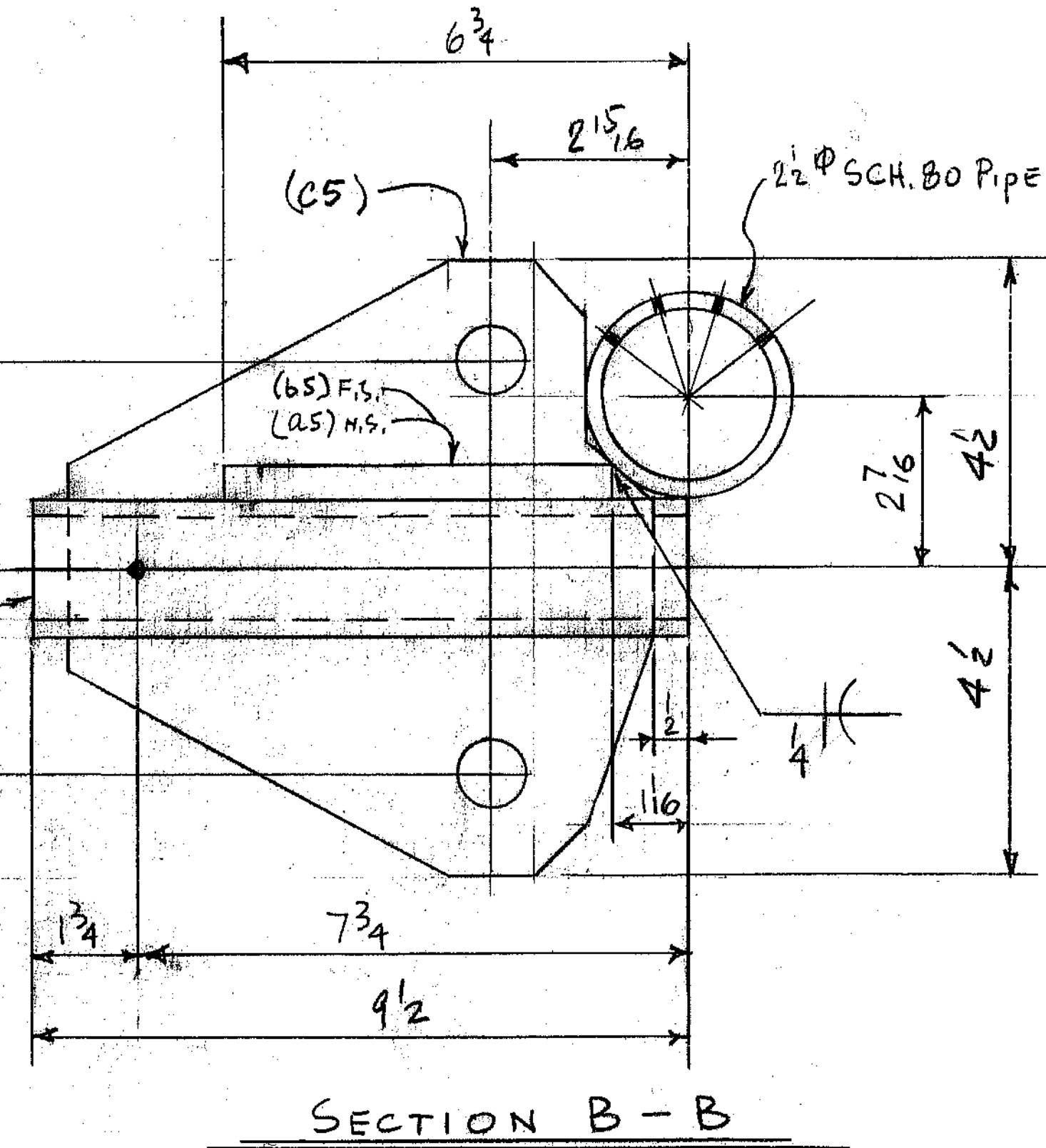
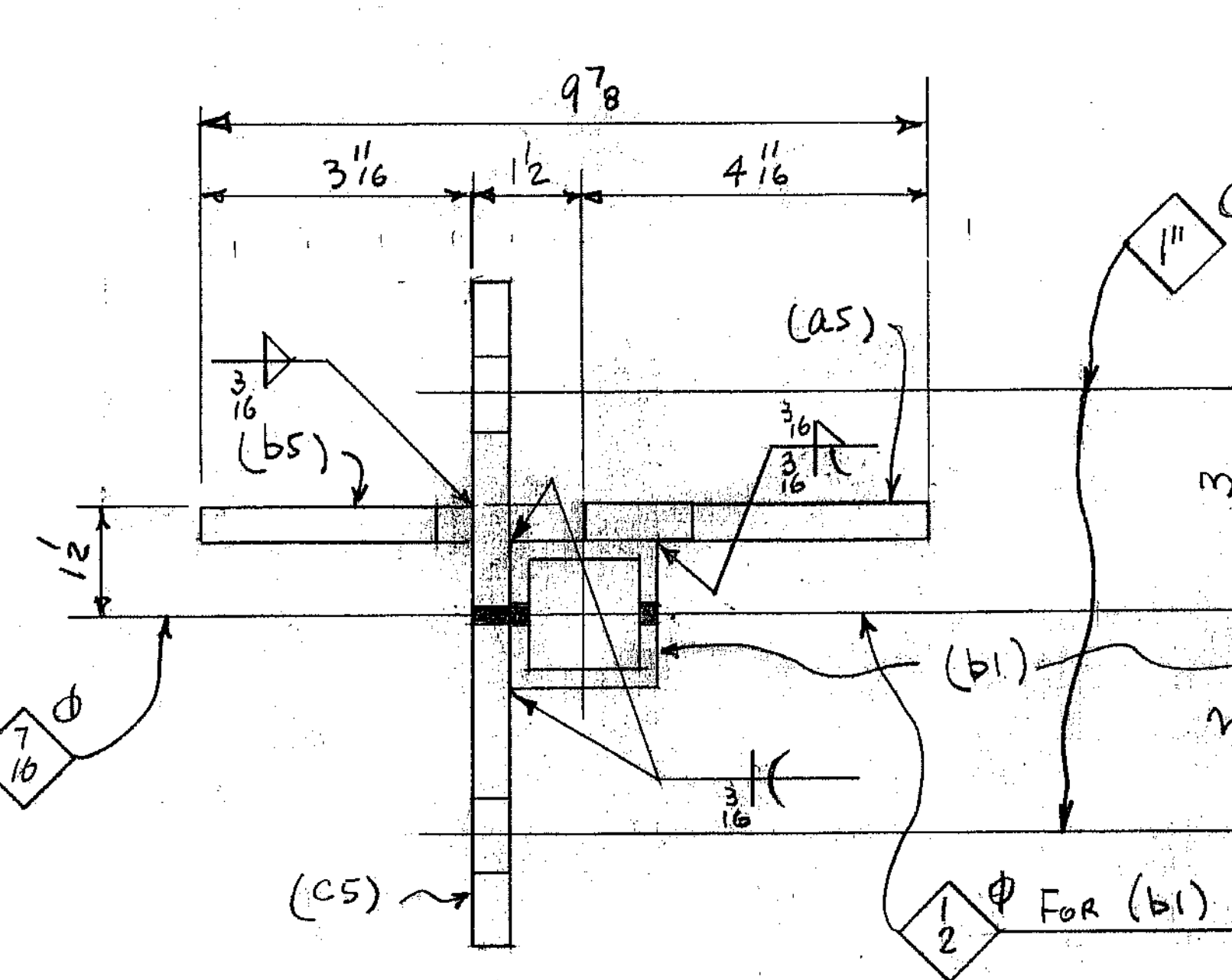
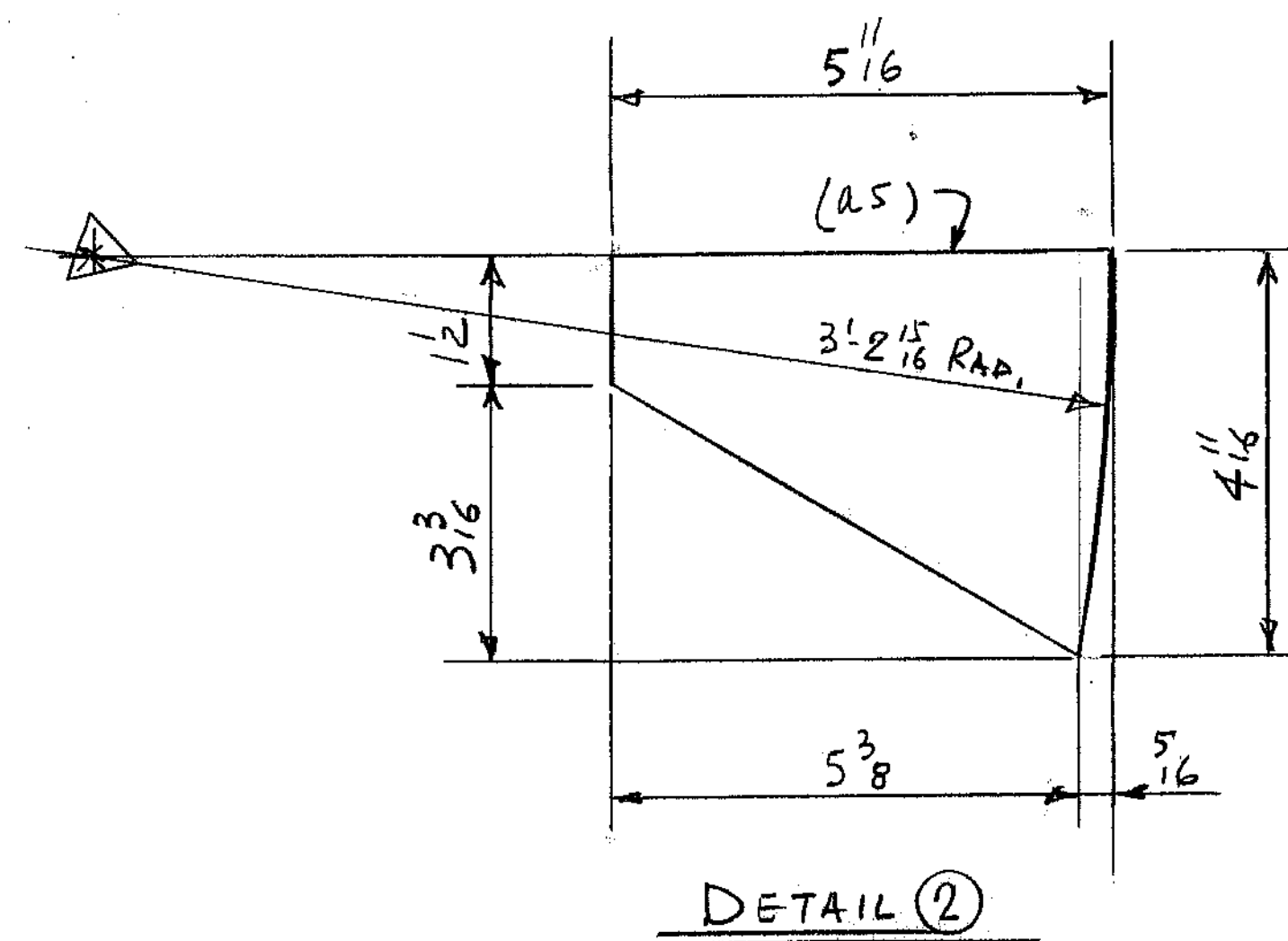
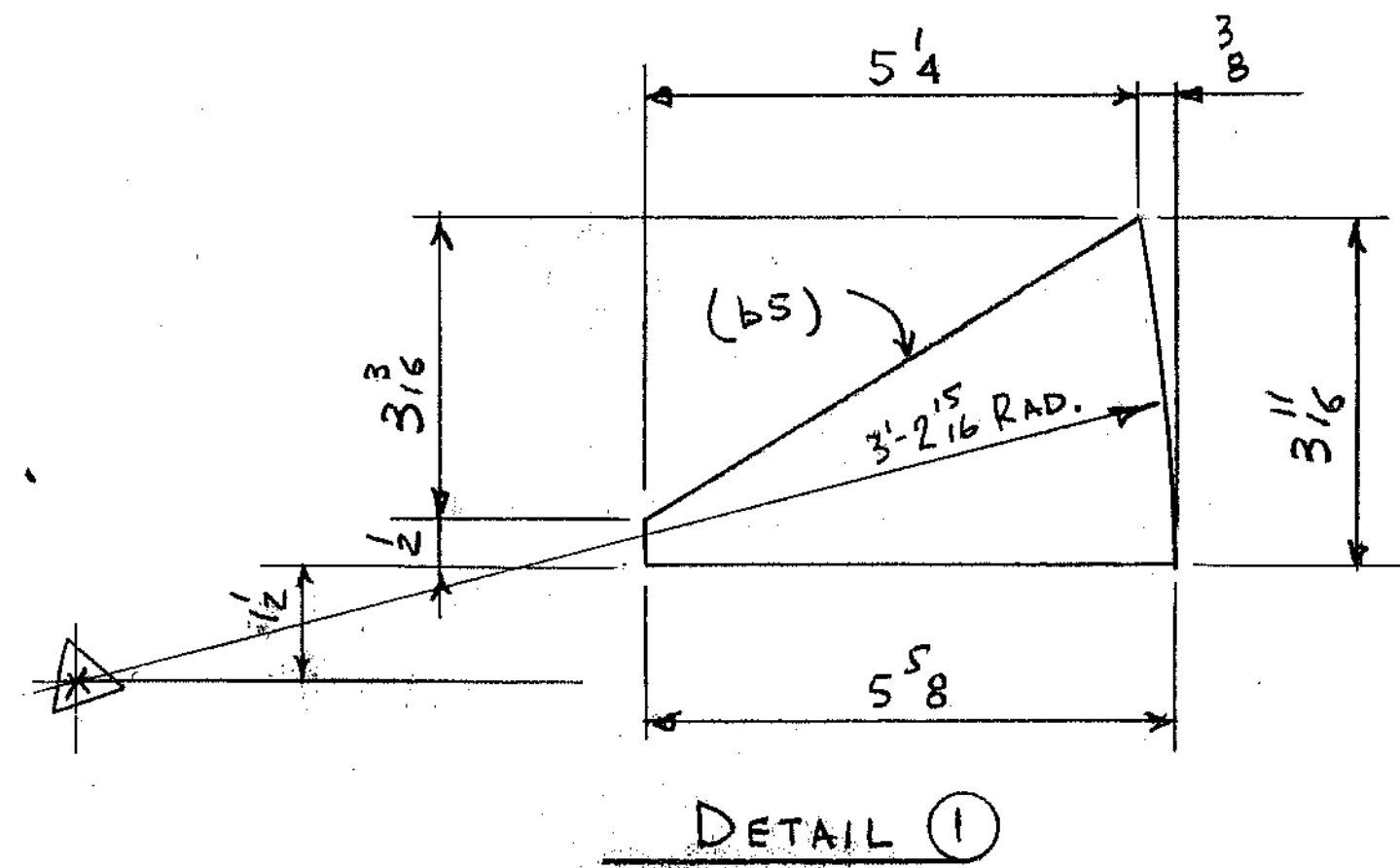
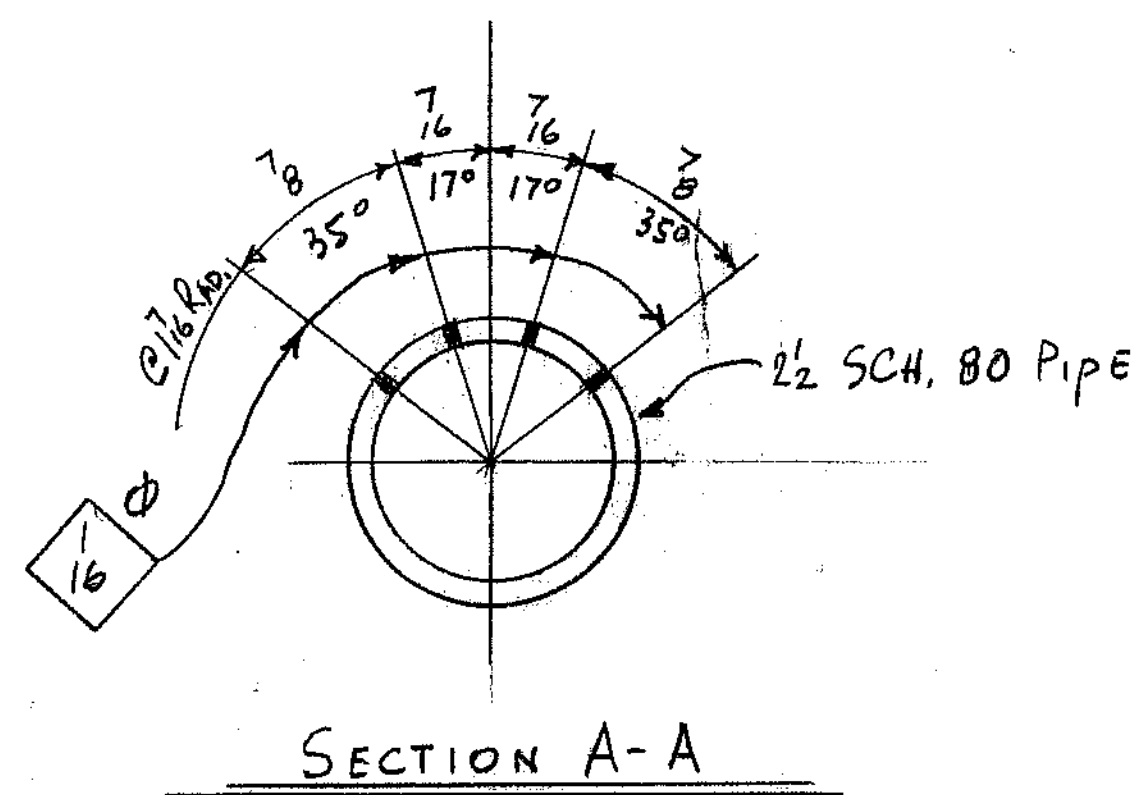


MAKE 6 ~ 2 1/2" Φ SCH. 80 PIPE x 10'-5 5/16" ~ MK 5A  
 ALUMINUM PIPE FOR UPPER RINGS, REF. NO 3

WORK THIS DWG. WITH DWG. 6  
 FIELD BOLT LIST SEE DWG. 9

NO.		DESCRIPTION	DATE	BY
REVISION				
CERT WELDERS		W.A.B.O.	PRINTS	APPVL
OPEN HOLES		13/16" U.N.	DATE	REV
PAINT		NO PAINT	SHOP	FIELD
<b>RAINIER WELDING</b>				
19020 NE 84TH STREET · REDMOND, WA 98053 (425) 868-1300 FAX (425) 868-8872 STEEL AND ALUMINUM FABRICATING				
ITEM	UPPER RINGS			
JOB	COLUMBIA RIVER BRIDGE TEMPORARY PILE TEST			
LOCATION	I-5, WA.			
CONTR.	AMERICAN CONST.			
DRWN BY	CHKD BY	DATE	JOB NO.	DRWG NO.
PF	J.M.R.	01-24-11	2860	5





VIEW C-C

VIEW D-D

BILL OF MATERIAL									
NO. TO SHIP	SHIP MARK	ASSY MARK	NO. PCS.	SECTION	LENGTH		REMARKS	UNIT WT.	P.O. NO.
					FT.	IN.			
6	5A			2 1/2 SCH. 80 PIPE	10	5 1/6	ROLL		
		a1	12	1/2 x 2 1/4	0	2 3/4			
		b1	12	1/2 x 2 x 1/4	0	9 1/2			
		g1	24	1/4 x 3 7/16	0	7	DET. 4		
		h1	6	1/4 PH. HALF COUPLING					
		a5	12	1/2 x 4 1/4	0	5 1/6	DET. 2		
		b5	12	1/2 x 3 1/4	0	5 3/8	DET. 1		
		c5	12	1/2 x 2	0	9	DET. 3		

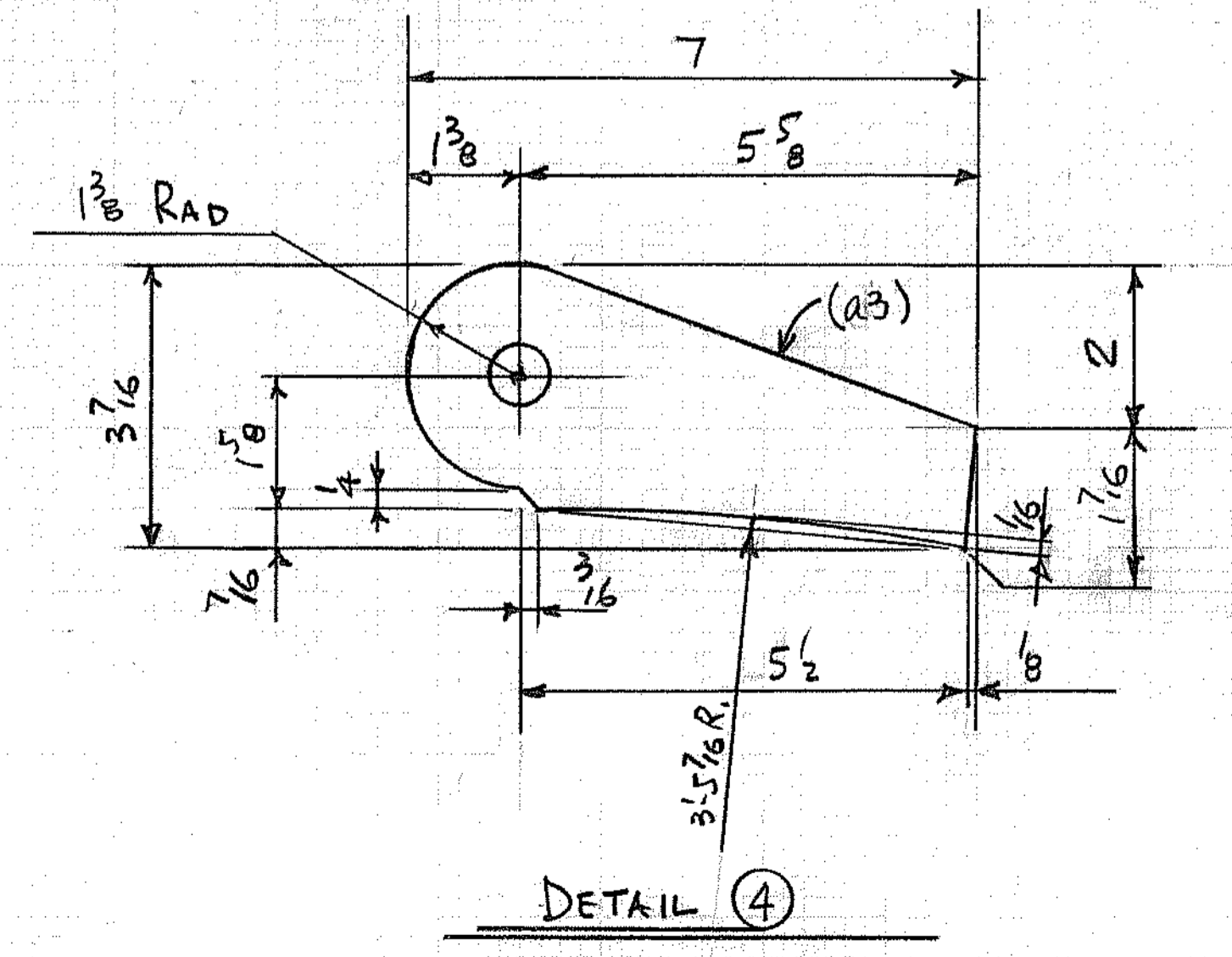
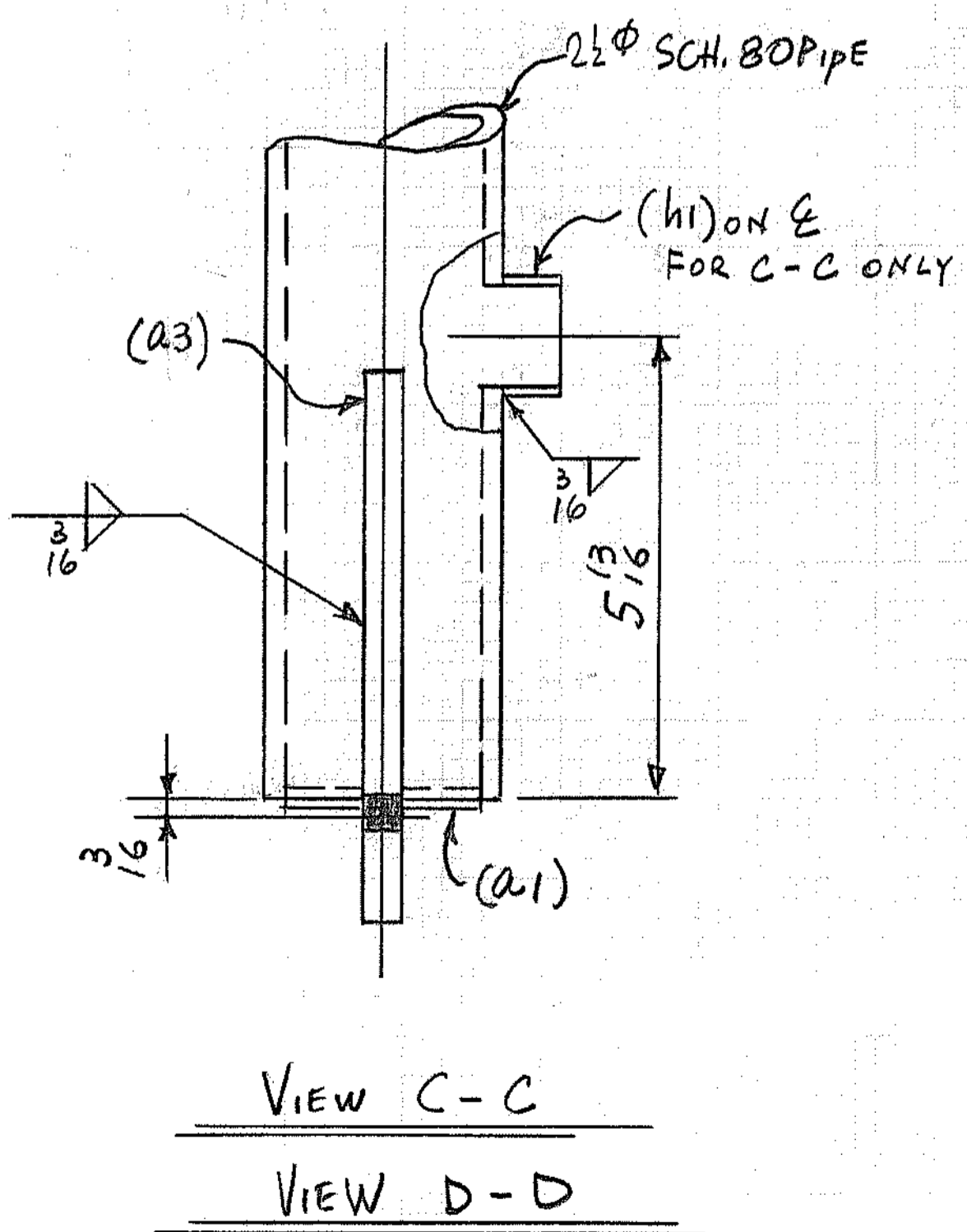
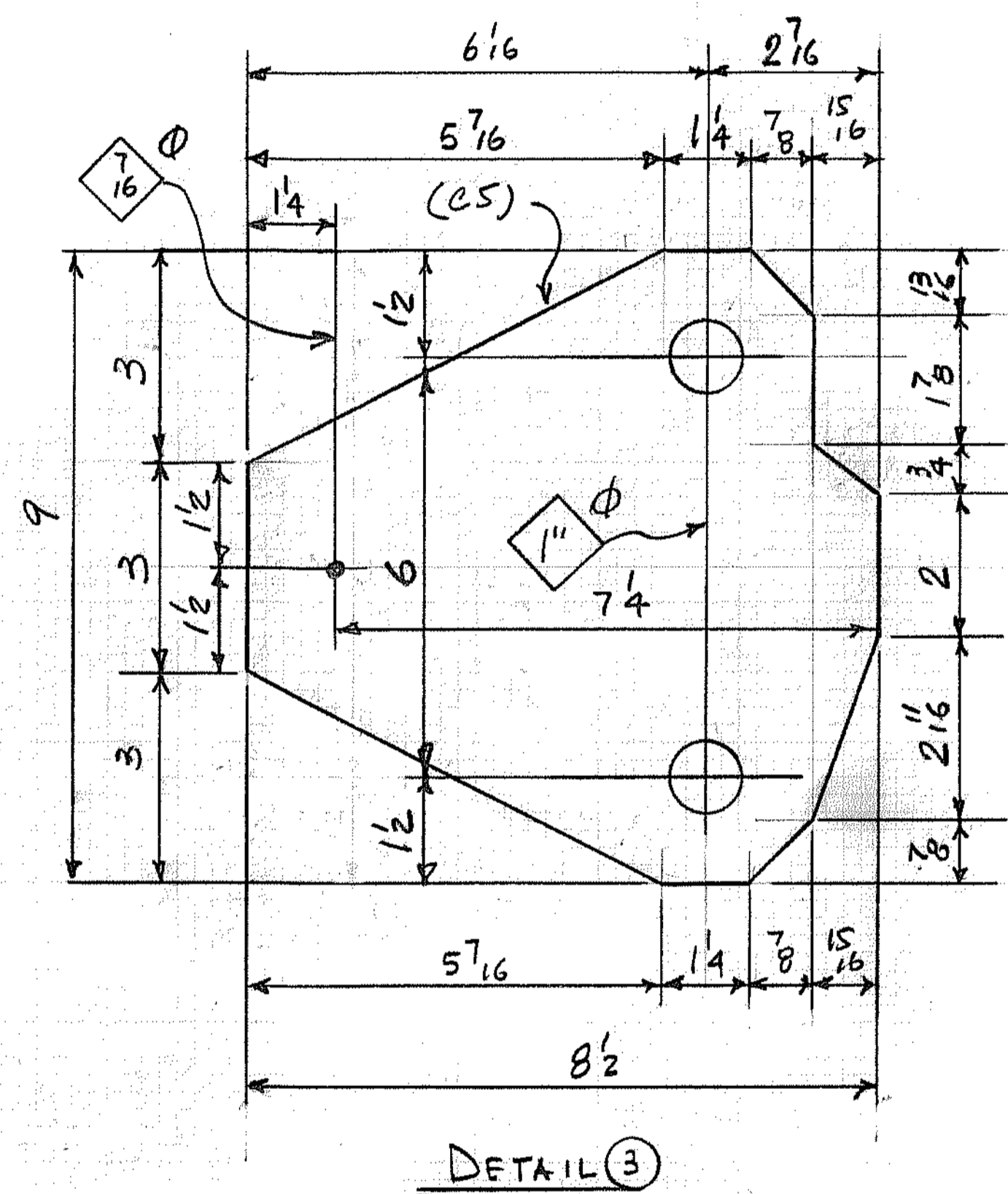
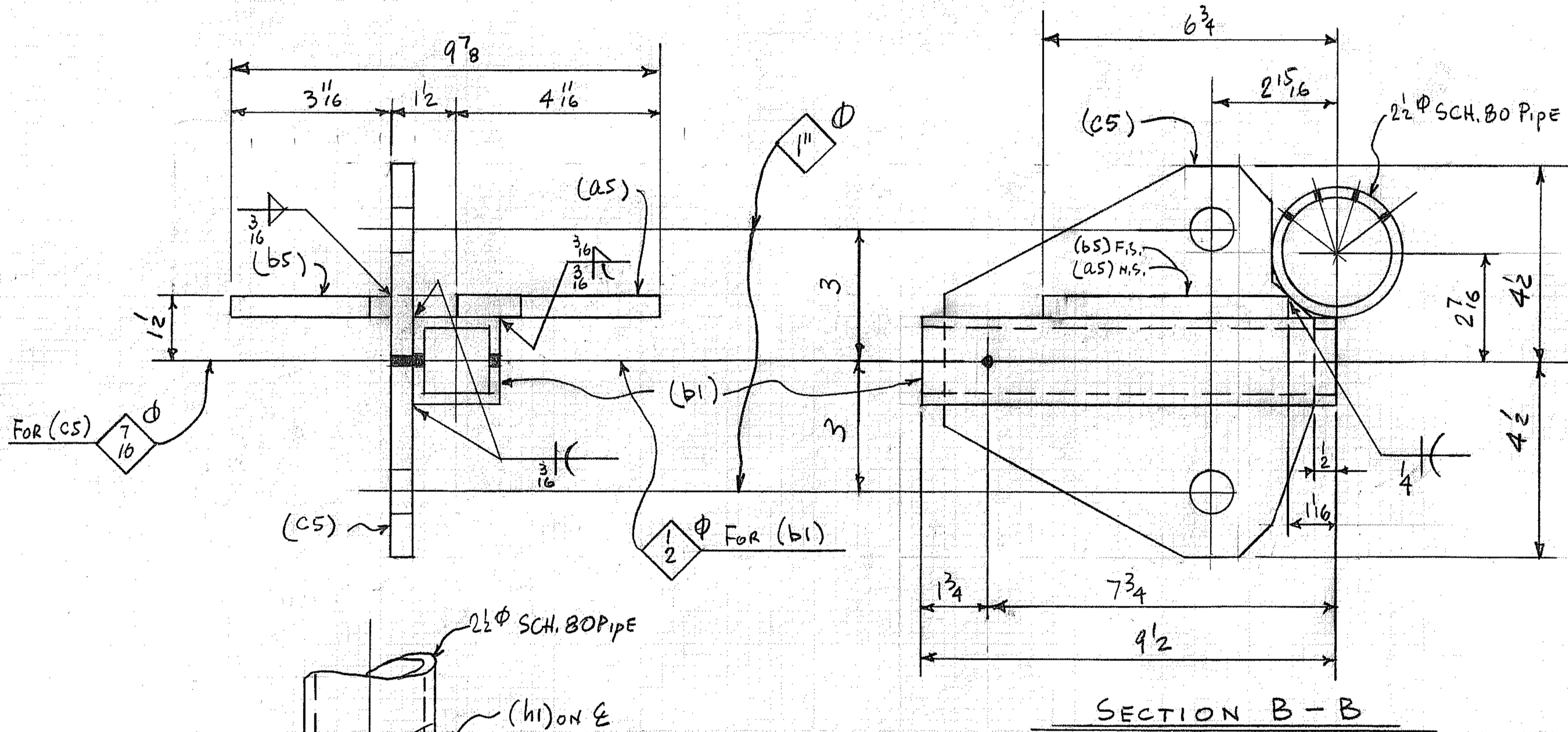
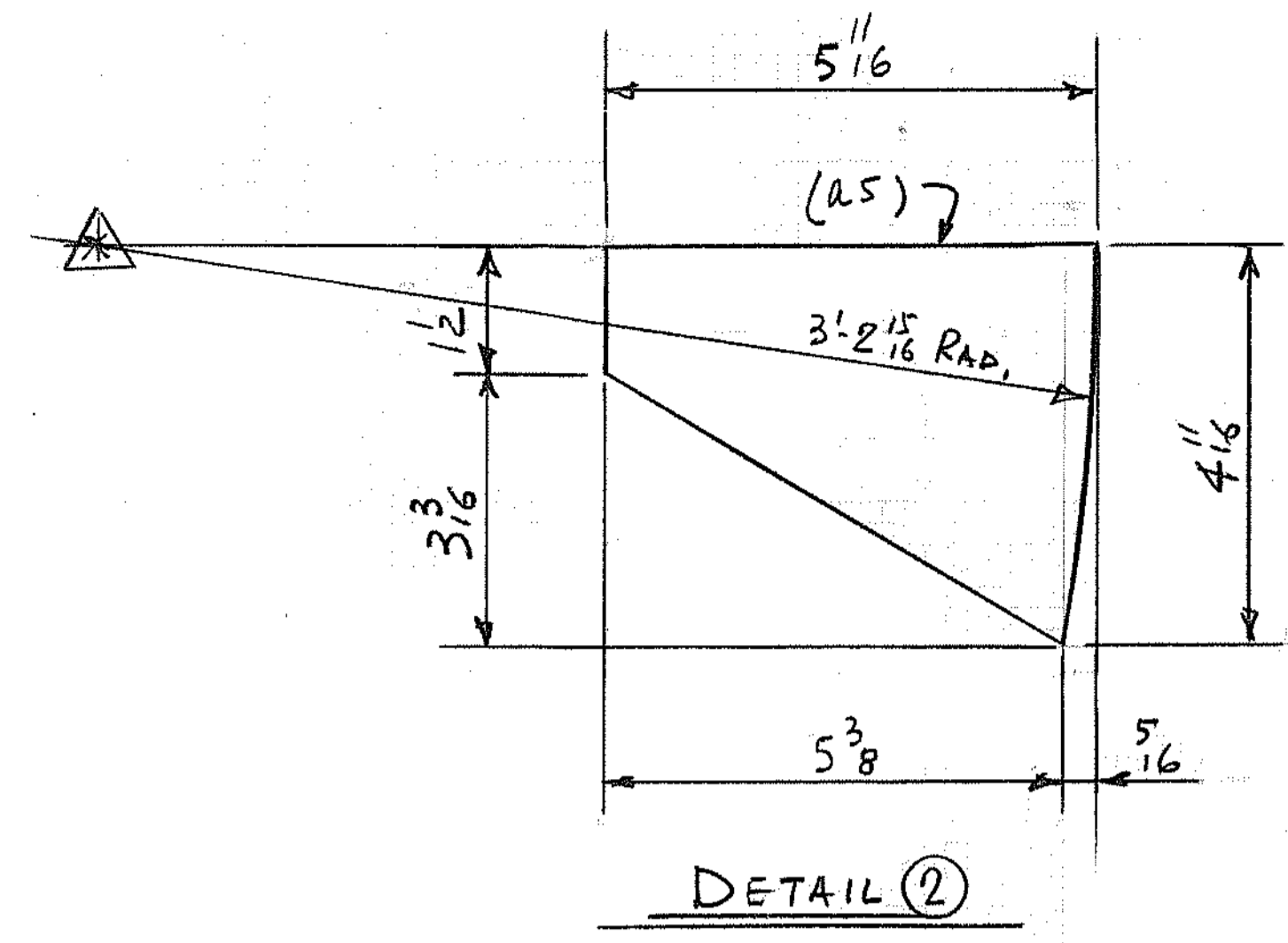
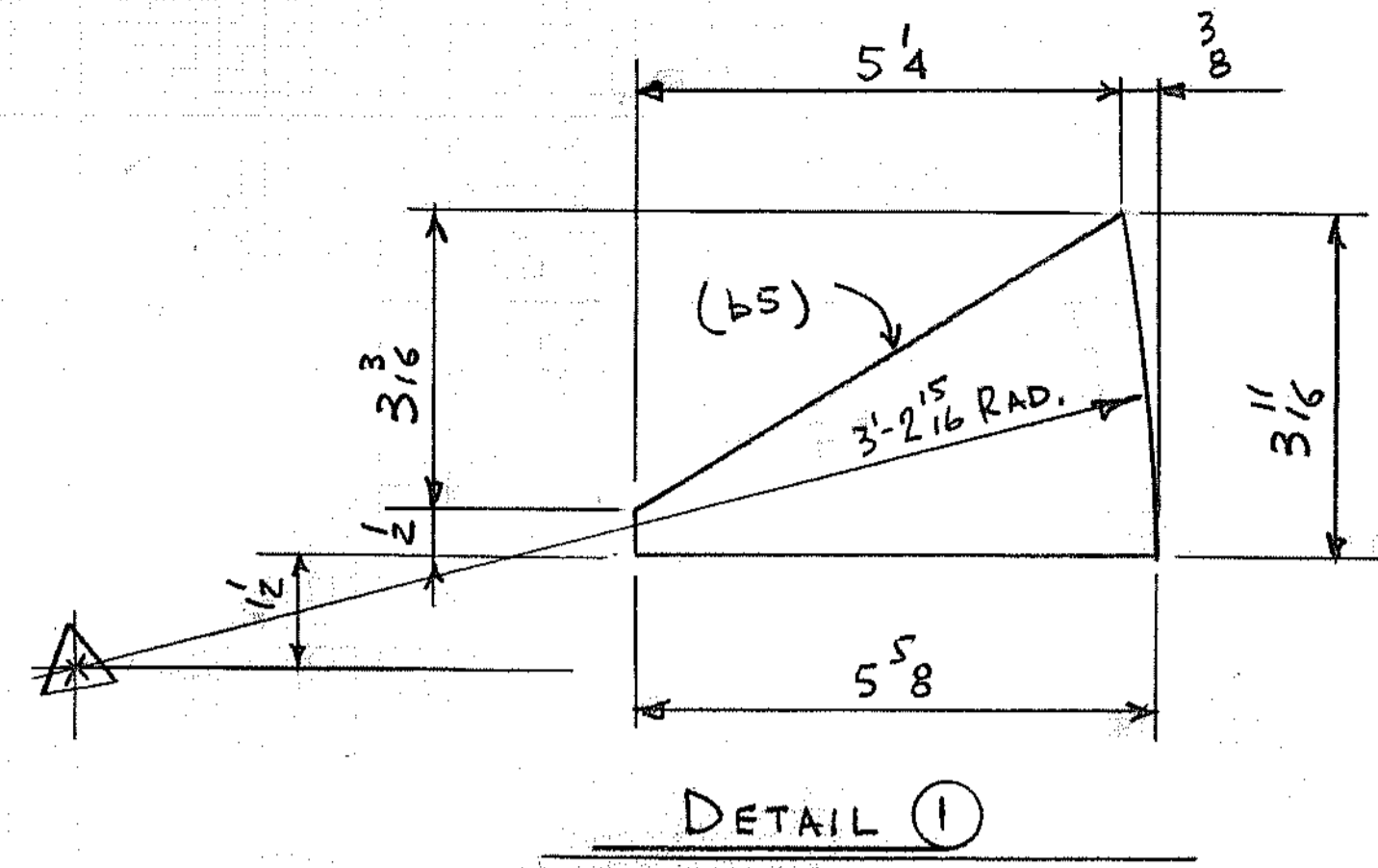
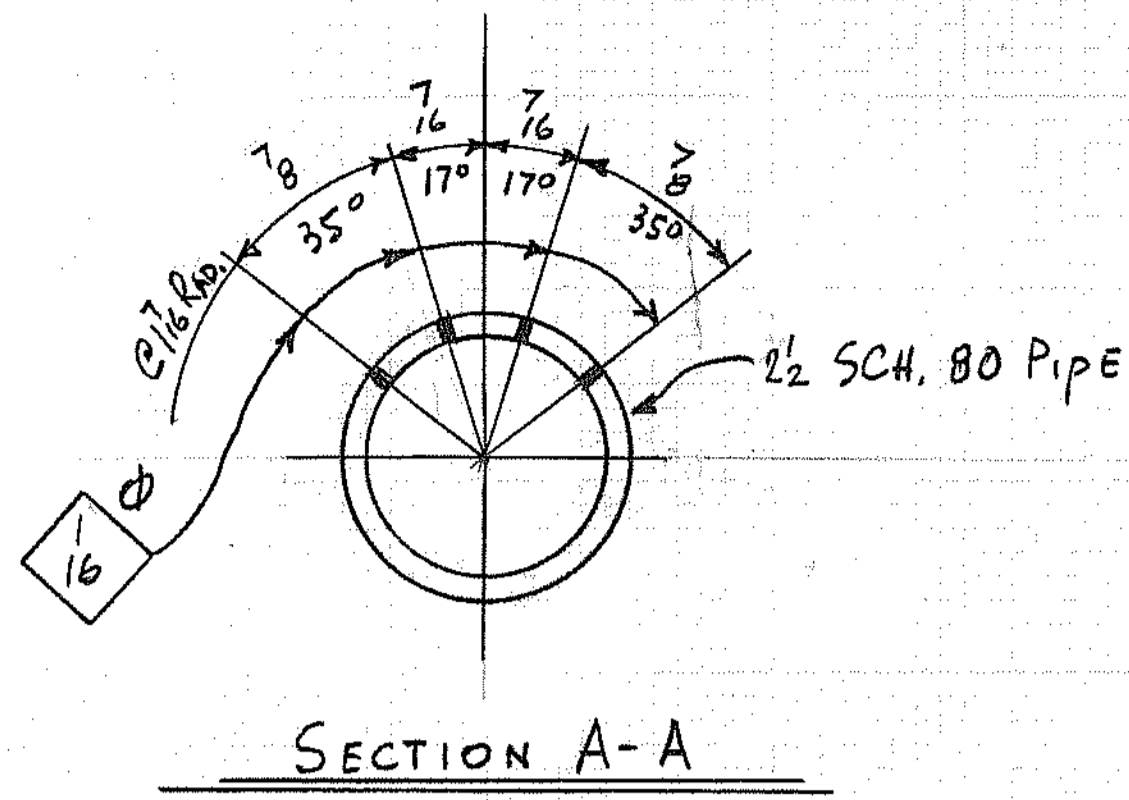
MATERIAL: AL 6061-T6  
MILL CERTS. REQ'D

WORK THIS DWG. WITH DWG. 5

NO.	DESCRIPTION	DATE	BY
REVISION			
CERT WELDERS	W. A. B. O.	PRINTS	APPL. SHOP FIELD
DATE	REV.		
OPEN HOLES	13/16 U.N.	END & EDGE DISTANCE	U.N.
PAINT	NO PAINT		
<b>RAINIER WELDING</b> 19020 NE 84TH STREET - REDMOND, WA 98053 (425) 868-1300 FAX (425) 868-8872 <b>STEEL AND ALUMINUM FABRICATING</b>			
ITEM	UPPER RINGS ~ SECTION, DETAILS		
JOB	COLUMBIA RIVER BRIDGE TEMPORARY PILE TEST		
LOCATION	1-5, WA.		
CONTR.	AMERICAN CONST.		
DRWN BY	CHKD BY	DATE	JOB NO.
PF	J.M.R.	01-24-11	2060
DRWG. NO.	REV.		
6			







BILL OF MATERIAL										
NO. TO SHIP	SHIP MARK	ASSY MARK	NO. PCS.	SECTION	LENGTH		REMARKS	UNIT WT.	WEIGHT	P.O. NO.
					FT.	IN.				
6	5A			2 1/2" SCH. 80 PIPE	10	5 1/16	ROLL			
		a1	12	1/4" x 2 1/16"	0	2 3/16				
		b1	12	T x 2 x 2 x 1/4"	0	9/2				
		a3	12	1/2" x 3 7/16"	0	7	DET. 4			
		h1	6	1/4" HALE COUPLING						
		a5	12	1/2" x 4 1/16"	0	5 1/16	DET. 2			
		b5	12	1/2" x 3 1/16"	0	5 5/8	DET. 1			
		c5	12	1/2" x 8/2"	0	9	DET. 3			

MATERIAL: AL 6061-T6  
MILL CERTS. REQ'D

WORK THIS DWG. WITH DWG. 7

NO.	DESCRIPTION	DATE	BY
	REVISION		
CERT WELDERS		PRINTS	APPVL
W.A.B.O.		DATE	REV
OPEN HOLES	13/16 U.N.	END & EDGE DISTANCE	U.N.
PAINT			
No PAINT			
<b>RAINIER WELDING</b>			
19020 NE 84TH STREET - REDMOND, WA 98053 (425) 868-1300 FAX (425) 868-8872 STEEL AND ALUMINUM FABRICATING			
ITEM	Upper Rings ~ SECTION, DETAILS		
JOB	COLUMBIA RIVER BRIDGE TEMPORARY PILE TEST		
LOCATION	I-5, WA.		
CONTR.	AMERICAN CONST.		
DRWN BY	CHKD BY	DATE	JOB NO.
PF	J.M.R.	01-24-11	2860
REV	DRWG. NO.		
	B		



